

TOWN OF NEW GLARUS

PARKS COMMISSION MEETING 20 JULY 2022, 6:00 PM AGENDA

NOTICE IS HEREBY GIVEN that Town of New Glarus Parks Commission, County of Green, will conduct a meeting for the transaction of business as is by law required permitted at such meeting as follows:

LOCATION: New Glarus Town Hall
26 5th Avenue
New Glarus, WI 53574

Note: Due to COVID-19 protocols, Town of New Glarus Parks Commission meetings will continue to have a virtual option.

Zoom Link: <https://us06web.zoom.us/j/83448889336?pwd=MXdTYzljVVMzeUJNSi9OMTd0dzBoQT09>

Meeting ID: 834 4888 9336 Passcode: 498654 Dial by your location: +1 312 626 6799 US (Chicago)

AGENDA:

1. Call to Order
2. Proof of Posting
3. Approve June 15, 2022, Parks Commission Meeting Minutes
4. Public Comments
5. Update on Donation of Proceeds from Tree Sale to Scouts – Harry
6. Discuss Results of Comprehensive Outdoor Recreation Plan Survey – Harry
7. Discuss Press Release on 2022 CORP Survey Results and CORP Public Meeting
8. Schedule Next Meeting August 17, 2022
9. Adjourn

POSTED: 7/12/2022

New Glarus Town Hall
New Glarus Garage
New Glarus Post Office

<https://townofnewglarus.com/>

Harry Pulliam, Chair
New Glarus Parks Commission

John Wright, Clerk-Treasurer

Pursuant to applicable law, notice is hereby given that a quorum or a majority of the New Glarus Town Board or Plan Commission Members may attend this meeting. Information presented at this meeting may help form the rationale behind future actions that may be taken by the Town of New Glarus Board. Persons requiring additional services to participate in a public meeting may contact the Town Clerk for assistance at 527-2390.

PARKS COMMISSION MEETING

Wednesday, June 15, 2022

Minutes

Attending: Chair Harry Pulliam (virtually), Kelly Ruschman, Mark Pernitz (virtually), and Mona Sue French, and Jason Neton, and Chris Narveson (arrived at 6:04 PM)

Absent: Dana Emmerton

Also Attending: Andy Elkins

- 1. Call to Order:** Meeting was called to order by Chair Pro Tem Jason Neton at 6:00 PM.
- 2. Proof of Posting:** The Clerk-Treasurer attested to proper proof of posting.
- 3. Approve May 18, 2022, Parks Commission Minutes:** A motion to approve the minutes was made by Commissioner French; second by Commissioner Pernitz. Motion carried.
- 4. Public Comments:** none.
- 5. Update on Talk with Andy Elkins about a River Tripping Workshop:** Andy Elkins reported on a recent trip down the Wisconsin River and has a PowerPoint™ presentation available about this experience. There was a brief discussion about possible dates to hold an informational workshop for the public. Typically, the presentation, including Q&A, takes about 45 minutes. Elkins further offered to present a brief talk about safety when encountering bears while camping along the shoreline. This workshop, including Q&A runs between an hour to an hour-and-a-half. Commissioner Neton proposed a controlled burn/invasive species workshop during the winter months and the Wisconsin River Tripping/Bear Safety workshop in April of 2023. There followed a brief discussion regarding where to hold the presentations including the Town Hall Community Room, Bailey's Run Vineyard, Toffler's (upstairs), and/or Community Co-op Kitchen (Monticello). Saturday, April 8, 2023 between 2:00 PM and 4:00 PM for River Tripping and Bear Safety was tentatively approved, without objection.
- 6. Update on 2022 Comprehensive Outdoor Recreation Plan (CORP) Survey Results:** Chair Pulliam provided a brief update regarding additional results received by the extended deadline. A number of those who responded are not residents of the Town. Preliminary results are included in tonight's packet. Issues with formatting will be addressed at a later date, prior to the public hearing. Discussions included possibly making the results searchable by keyword and, five years from now, possibly working with the Village of New Glarus on a joint CORP. Commissioner Neton recommended sharing the responses from Village residents with their Parks and Recreation Committee and Village Board; without objection. Chair Pulliam noted that the Clerk-Treasurer separated survey responses by community. Those addresses that could be correlated with Town residents were put into random order so that three selections could be made to distribute the three \$100 gift certificates in Chamber Bucks. Motion by Chair Pulliam to award the three \$100 gift certificates, based upon the random order as described above; second by Commissioner Pernitz. Motion carried. Without objection, Chair Pulliam will create a press release announcing the three winners.
- 7. Plan for Public Hearing on Comprehensive Outdoor Recreation Plan, July 20, 2022:** once the results of the CORP survey are reformatted, Chair Pulliam recommends that the

group familiarize themselves with those results in order to answer any questions that might arise at the Public Hearing. It was noted that a Public Hearing prior to the August Town Board meeting will need to be scheduled prior to the Board's consideration of adoption and submittal to the Wisconsin Department of Natural Resources.

8. **Continue to Discuss Prairie Workshop:** Commissioner Emmerton was not present to provide an update.
9. **Continue to Discuss Seeding of Prairie Plants at BBRC after a Fall Burn:** In the absence of Commissioner Emmerton, members discussed the proposed controlled burn this fall and solicitation of seeds from area prairie owners to reduce reseeding costs. The Town Patrolperson should be notified in advance of the burn to mow a fire break around the perimeter of Blue Bird Ridge Conservancy land and to separate the Oak savannah from the prairie in mid to late September, 2022.
10. **Continue to Discuss Holding Another Invasive Species Workshop:** Commissioner Neton will coordinate this effort. He will reach out to presenters, including David Cordray of Environmental Returns Services and possibly a contact from the South Central Invasives Partnership. There will be an update in July.
11. **Discuss Parks Commission Workshops Held in the Past:** The Clerk-Treasurer had made the members aware of past workshops, but no materials from those have been shared with the group to date.
12. **Plan to Discuss at June Parks Commission Meeting the Donation of Proceeds from the Tree Sale:** The profits this year are \$245.79 which is less than prior years. Those in attendance wonder whether the market has been saturated and needs to be conducted annually. There followed a brief discussion regarding whether the money should be donated or used to offset costs for workshops including honoraria. Commissioner Pernitz noted that the Scouts had offered to help maintain local trails. Motion by Commissioner Neton to authorize the Clerk to prepare a check to donate the \$245.79 tree sale profits to Boy Scout Troop 106 and solicit their help with the electronic recycling event; second by Commissioner Ruschman. Motion carried.
13. **Update on Trail along County NN:** Commissioner Narveson stated that updates to the CORP will determine the next step in the construction process for the trail. Even if the survey results support trails, then the Town Board will still need to support the release of Town funds for the construction not covered by the grant administered through the Wisconsin DNR. It might be helpful for Parks Commission members to attend a future Town Board meeting when the CORP survey results are presented in support of the proposed trail and validity of the survey results.
14. **Continue to Discuss Town Newsletter:** Commissioner Narveson provided a brief update of items discussed by the Town Board to include in the first issue of the newsletter.
15. **Schedule Next Meeting** – the next meeting will be held on July 20, 2022 at 6:00 PM as a public hearing. The next agenda should include discussion of another electronics recycling event in October of 2022.
16. **Adjourn:** A motion to adjourn made by Commissioner Narveson; second by Commissioner Ruschman at 8:00 PM.

Approved: _____ Minutes transcribed by Clerk/Treasurer Wright from Zoom recording



COMPREHENSIVE OUTDOOR RECREATION PLAN UPDATE 2017 - 2022

**Town of New Glarus
July 2017**



vierbicher
planners | engineers | advisors



ACKNOWLEDGEMENTS

We would like to thank the Parks Commission, the Plan Commission, the Town Board and Town Staff for their role in this Plan Process.

Town Board

Chris Narveson, Chairman
Dean Streiff
Susan Crum
Jim Hoesly
Robert Elkins

Parks Commission

Harry Pulliam, Chairperson
Chris Narveson
Andy Elkins
Dana Emmerton
Beth Karr

Plan Commission

Chris Nareveson, Chairperson
Robert Elkins
John Freitag
Craig Galhouse
John Ott
Reg Reis
Dean Streiff

Town Staff

Maegan Roeslein, Deputy Clerk/Plan Administrator

Comprehensive Outdoor Recreation Plan
prepared by:

Vierbicher
999 Fourier Drive Ste. 201
Madison, WI 53717
608.826.0532
www.vierbicher.com

Plan Adopted by Town Board on July 10, 2017

©2017 Vierbicher

CONTENTS

Introduction	1
Existing Conditions	7
Recommendations	17
Appendices	23
Appendix A – Community Survey Results	23
Appendix B – Fee Resolution	39
Appendix C – New Glarus Woods State Park	43

Figures

Figure 1: Raptor Workshop	3
Figure 2: Town of New Glarus Population Trends	8
Figure 3: Town of New Glarus Population Pyramid, 2015	8
Figure 4: Village of New Glarus Future Land Use Map	9
Figure 5: Available Outdoor Recreation Opportunities	10
Figure 6: Green County On-road Bicycle Map	11
Figure 7: Population Density	13
Figure 8: Online Survey Postcard	14
Figure 9: Survey Results – Paved Multi-use Recreational Trails – Use	15
Figure 10: Survey Results – Parks Satisfaction	15
Figure 11: Survey Results – Conservancies Satisfaction	15
Figure 12: Survey Results – Trails Satisfaction	15
Figure 13: Survey Results – Open Space, Native Plants, Wildlife Protection, Natural Resource Conservation – Importance	15
Figure 14: Town of New Glarus Potential Future Trails	20

Tables

Table 1: Classification of Town of New Glarus Acreage	8
Table 2: Village of New Glarus Park Participation	11
Table 3: Village of New Glarus Pool Membership, 2015	11
Table 4: Village of New Glarus Pool Membership, 2016	11
Table 5: Sample Recreation and Open Space Standards	12
Table 6: Potential Future Trails Information	19



INTRODUCTION

INTRODUCTION

Purpose

Parks, recreation, trails, and open space are essential elements in the quality of life for all communities. Increased demand for recreational opportunities, including outdoor recreation, has led to increased pressure on existing recreational facilities. To meet this demand the community is expected to provide additional facilities or improvements that offer residents a wide range of quality recreational opportunities.

Therefore every five years, The Town of New Glarus updates their Comprehensive Outdoor Recreation Plan (CORP) as a tool for the community and to stay eligible for matching government funds for parkland and recreation improvements under Wisconsin Department of Natural Resources requirements.

The Town of New Glarus CORP is an expression of the community's goals and objectives for current and future needs for trails, parks, and open space. The intent of this document is to guide the continual improvement of the Town's trails, parks, and open space for local residents and visitors. The Parks Commission and Town Board shall make policy decisions for trails, parks, and open space based on this adopted plan. Actual implementation is contingent on funding sources, new opportunities, budget priorities and changing community needs and desires.

Statewide Comprehensive Outdoor Recreation Plan

The state is currently updating their 2017 – 2022 Wisconsin Statewide Comprehensive Outdoor Recreation Plan (SCORP). The primary actions for the 2017 – 2022 SCORP include collecting data on outdoor recreation preferences of Wisconsin citizens, updating data on the supply of outdoor recreation opportunities, with a focus on properties open to the public for nature-based outdoor recreation, and developing priorities for future recreation funding.

At its core, the SCORP is used to help allocate federal funds equitable among local communities, but the document also transcends many levels of outdoor recreation discussion and policy. – Wisconsin SCORP

Role of Parks, Recreation, and Trails

Parks, recreation, and trails shape community image, public health, and bring economic opportunity. Recreational opportunities provide individuals the possibility to socialize with other people. Open space also provides places for individuals to recharge mentally.

Tourism and Economic Impact

Trails and Greenways positively impact individuals and improve communities by providing not only recreation and transportation opportunities but also influencing economic and community development. Many of these benefits include:

- Making communities better places to live by preserving and creating open spaces.
- Encouraging physical fitness and healthy lifestyles.
- Creating new opportunities for outdoor recreation and non-motorized transportation.
- Strengthening local economies.
- Protecting the environment.
- Preserving culturally and historically valuable areas.

Various Studies demonstrate that parks and trails increase nearby property values and nearby businesses. Connecting residents and visitors to parks and recreational facilities and community facilities is important to encourage safe, alternative modes of transportation. The Town wishes to connect to the Village of New Glarus, nearby communities, and regional trails. This allows for residents to travel safely to locations outside the Town of New Glarus and invites visitors into the Town. Dedicated bicycle and pedestrian trails improve the comfort of users,

open new travel options, reduce automobile traffic, increase recreation and exercise and help create more livable communities.

One such study observed the economic impacts of the Wisconsin State Park system¹. This study reviewed the mechanisms that link state parks and trails to local economic impacts. Research questions included: "To what extent do differing visitor types spend their trip dollars in the local region around these sites?" and "How do visitors to state parks and trails contribute to local job creation and income generation within gateway communities across the state?" The study found that outdoor recreation on public lands serves as a key motivator for tourism. Researchers analyzed trip-related expenditures and excluded non-trip related spending. According to the study, visits to New Glarus Woods State Park had total visitor expenditures of \$3,268,698 with \$1,372,466 from local visits and \$1,896,232 from non-local visits.

Summary of Previous Plans

The previous Town of New Glarus CORP was completed in 2011 by the Town Parks Commission. This plan focused on trail identification, conservation, provision of educational workshops, and collaboration with the Village of New Glarus on various recreation opportunities. Specifically, the 2011 plan identified the continuing restoration efforts of the Bluebird Ridge Conservancy and acquiring town land for a community park with a potential Town Hall site. As noted in the accomplishments section, the Town successfully continues restoration efforts and has built a Town Hall.

Town Parks Commission

The Town Parks Commission formed in 2004 to improve and maintain parks in the Town. The Town approved the first CORP in 2006, with an update in 2011. The Parks Commission seeks to balance spending its limited dollars between long-term and immediate needs of the

¹ Economic Impact Study
<https://urpl.wisc.edu/sites/urpl.wisc.edu/files/people/marcouiller/13EISPfinal.pdf>

community. The Town and the Village formed a joint Town/Village Committee in 2009 to pursue goals mutually beneficial to both communities. The joint committee meets quarterly with the location rotating between the Town and Village.

The Parks Commission has held numerous workshops focused on objectives from the 2011 CORP. The town is dedicated to preserving and protecting the natural environment and formalizing partnerships in the process. The following section lists the accomplishments and workshops completed since 2011.

Accomplishments

- Sponsored Bee Club.
- Identified lands available for acquisition for future recreational use.
- Marked conservancy areas with proper signage and list on a Parks Master Plan map.
- Posted signage at Blue Bird Ridge Conservancy.
- Identified naturalist and environmental groups that help with preservation and provide grant money to assist residents.
- Identified grants for recreational use.
- Consulted with the Green County Forester regarding the creation of a Town Tree Planting Program for interested property owners.
- Held annual Tree Sales and contributed yearly to the Arbor Day Project.
- Educate Town residents on measures they can take to preserve their own property and foster proper environmental practices.
- Shared funding or improvements for facilities such as the ice skating rink.
- Acquired and renovated a new Town Hall.
- Held workshops each year (below).

Workshops

- 2011 - Hawks, Owls and Falcons--Oh My! Raptor
- 2012 - Barn Renovation Part 1
- 2013 - Tree and Barn Renovation Part 2
- 2014 - Tree and Bird and Conserving
- 2015 - Tree and Bee
- 2016 - Tree and Bat
- 2017 - Tree in May and Water in August

Figure 1: Raptor Workshop



Planning Process

Recreation and trail planning are essential components of long-range community planning in the Town of New Glarus. The Town of New Glarus contracted with Vierbicher to complete the CORP. Vierbicher and the CORP committee facilitated public meetings and an online survey (see Appendix A) to gather citizen feedback on future priorities for the next five years. The process involved two public engagement meetings—one at the beginning of the process and one after the draft goals and objectives were created. A public hearing was held prior to plan adoption. This plan was developed following the guidelines for Development of Local Comprehensive Outdoor Recreation Plans created by the Wisconsin Department of Natural Resources.

Plan Process Timeline

March 2017

- Public Meeting
- Parks Committee Survey Development
- Future Trail and Park Discussion
- Reviewed Previous Plan Goals and Objectives
- Identified Accomplishments

April 2017

- Public Meeting
- Survey Review and Analysis of Needs
- Reviewed New Goals and Objectives
- Draft Plan Review
- Recommendation of Draft Plan

May 2017

- Plan Commission Review

June 2017

- Parks and Plan Commission Review

July 2017

- Public Hearing
- Town Board Approval

Amending the Plan

Plan amendments are common and should be considered part of the planning process. Amendments frequently represent good implementation or plan usage and should be acceptable for consideration by local decision makers. The Parks Committee does not have to wait five years before amending the CORP. Amendments must follow the same process as when the original plan was prepared. Amendments generally prolong the effectiveness of the original plan.

There should be opportunity for public input in the planning process with a full and open discussion of the need for the amendment by the Parks Commission, a draft amendment that is reviewed and acted on by the Parks Commission at an official public meeting, a referral to the Town Board, a public hearing held by the Parks Commission or Town Board, and finally, the adoption of the plan amendment by the board.

Plan Goals and Objectives

The Parks Commission developed five main goals to guide the future growth and development of the town. One of the most important roles of local government is its responsibility to provide open space, parks and recreation facilities and programs for public use.

Goal 1: Provide active and passive recreational lands to meet current and future recreational needs of the community and visitors.

1. Respond to community requests for provision of recreational resources.
2. Respond to future needs as they are identified.
3. Obtain additional lands for a community park based on demand by increasing populations, or the environmental and recreational significance of the land.
4. Investigate the feasibility of adding additional roads to the State of Wisconsin Rustic Road System, and create a Scenic Rural Route for bikes and cars alike, where adventurers would pass through various points of interest in the area.

Goal 2: Provide safe and efficient pedestrian and bicycle access between residential neighborhoods, schools, the Village, and other recreational activities.

1. Refer to this plan in review of development proposals.
2. Develop a trail system throughout the Town to link schools, state parks, and the Sugar River Trail.
3. Link subdivision areas to the Village by pedestrian/bike trails.
4. Create a European-style cross country trail/walking path complete with benches that invite and encourage Town and Village residents and visitors to enjoy the local beauty while walking.

Goal 3: Preserve and enhance environmental corridors.

1. Identify and conserve areas of particular interest, unique plant or animal life, scenic views, environmentally sensitive areas, or native natural areas.
2. Identify lands available to obtain if the potential exists for future recreational use.
3. Link active parklands together via environmental corridors.
4. Use park and recreational lands as a means to promote environmental education and community history.
5. Continue the Town Tree Planting Program.
6. Educate Town residents on measures they can take to preserve their own property and foster proper environmental practices.

Goal 4: Coordinate park and recreation planning and development.

1. Identify and conserve areas of particular interest, unique plant or animal life, scenic views, environmentally sensitive areas, and native natural areas.
2. Coordinate park and open space planning and development with adjacent governments, school districts, Green County, state and federal agencies, and other owners of public

and private open space in the community.

3. Continue to ensure the availability of recreational activities for the enjoyment and benefit of all Town residents in partnership with the Village of New Glarus and New Glarus School District.
4. Preserve areas planned for future parks and recreational trails from development.
5. Complete regular reviews and updates of this plan with the Town Comprehensive Plan.
6. Provide opportunities for public participation in park and recreational facility development.
7. Encourage volunteers to participate in park programming.
8. Provide electronic communications to our community.

Goal 5: Continue education and awareness programs.

1. Continue to provide workshops for the community.
2. Educate the general public on needs and improvements for the parks and trails system.
3. Integrate environmental awareness into signs and exhibits along the route system.
4. Integrate historical and cultural resources into bicycle and pedestrian facilities.
5. Provide education of and facilitate well testing.



EXISTING CONDITIONS

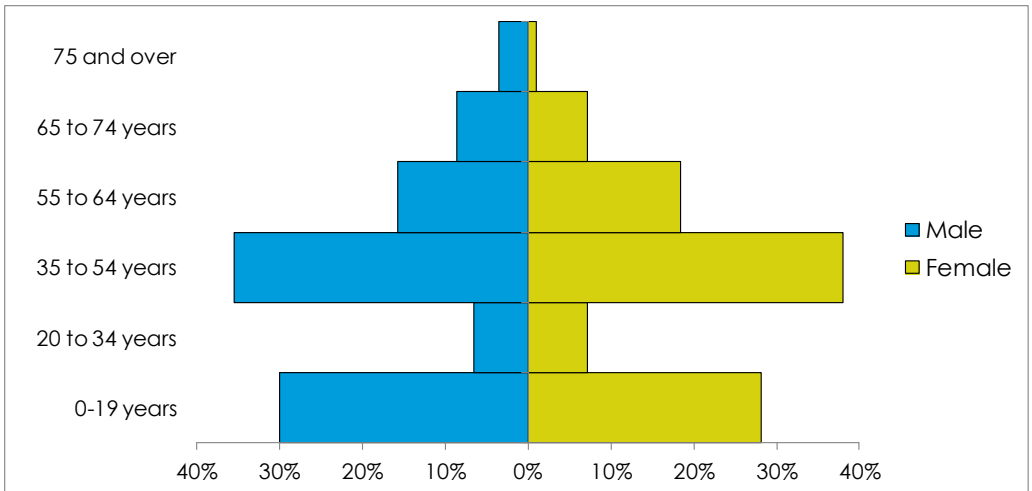
EXISTING CONDITIONS

About the Town of New Glarus

The Town of New Glarus is a picturesque community in Green County, Wisconsin that was originally founded in 1845 by Swiss settlers. According to the Wisconsin Department of Administration, the Town has a population of 1,400 with an expected population of 2,020 by the year 2040, a 44 percent increase (Figure 2). Figure 3 is a population pyramid that shows a snapshot of the Town's population taken from the 2015 American Community Survey (ACS). The age distribution is roughly the same as it was in 2000. While there are not many 20-34 year olds, there is a spike in the 35 to 54 year old age category and a large percentage of children under the age of 19.

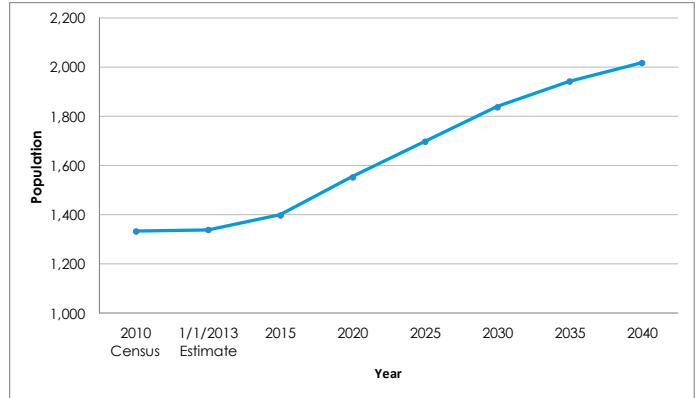
The Town has been continually growing for the past 20 years and will continue to grow. While the Town had many farms, that has changed over the years due to the construction of residential subdivisions. The Town has transitioned from a traditional rural town to a bedroom community populated by commuters residing on small tracts of land. Table 1 illustrates the land use classification. Current land ownership reflects a more complex blend of limited traditional agriculture, non-traditional agriculture, suburban developments, and rural single-family homes on lots ranging in size from two to forty acres.

Figure 3: Town of New Glarus Population Pyramid, 2015



Source: American Community Survey, 2015

Figure 2: Town of New Glarus Population Trends



Source: American Community Survey and Wisconsin Department of Administration.

Table 1: Classification of Town of New Glarus Acreage

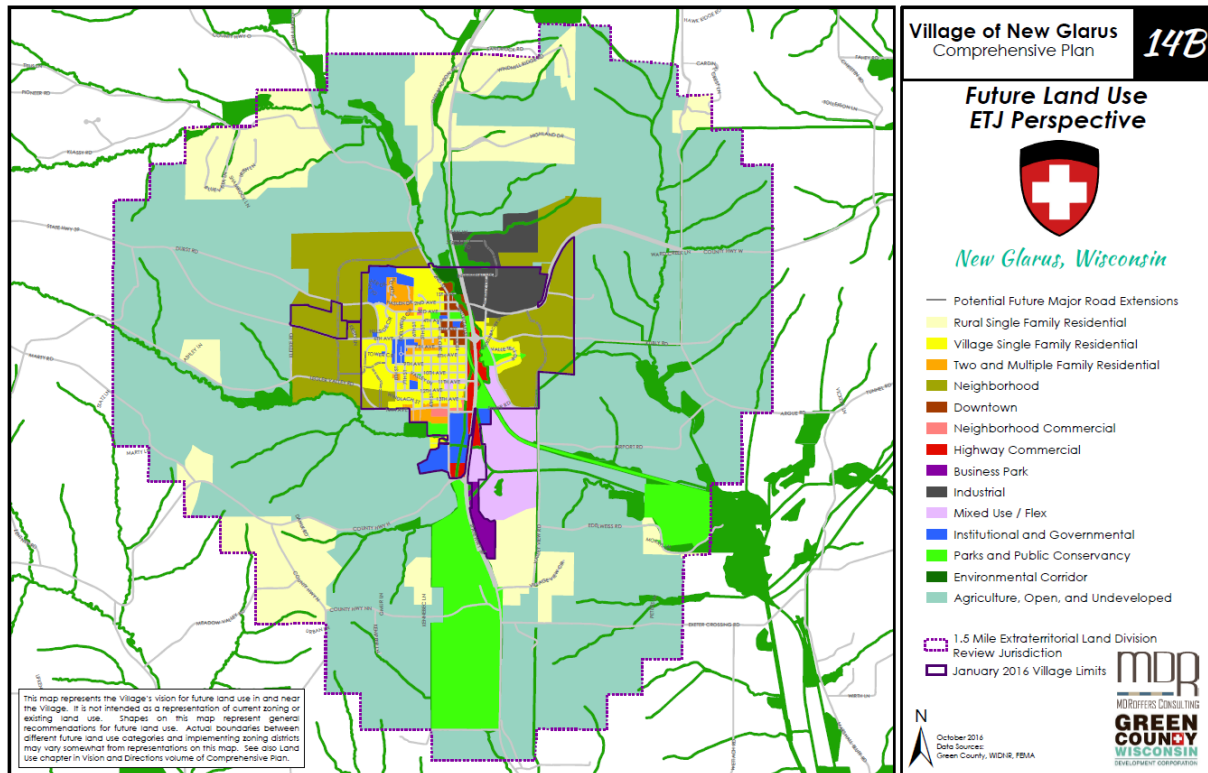
Classification	2010	2016
Residential	1,867	1,928
Commercial	138	143
Agricultural	15,091	14,735
Undeveloped	907	1,100
Agricultural Forest	1,475	1,536
Forest Lands	342	352

Source: Wisconsin Department of Revenue

Growth Patterns

Due to its close proximity to Madison the town is experiencing continuous growth, especially through construction of new residential subdivisions. The town has transitioned to a bedroom community. The town must consider the current residents and future residents when planning for park recreation. According to the Village of New Glarus future land use map (figure 4), neighborhoods and industrial areas are planned within the Village's Extraterritorial Jurisdiction of the town. The Town Parks Commission considered these growth areas when planning for recreation.

Figure 4: Village of New Glarus Future Land Use Map



Source: Village of New Glarus Comprehensive Plan

Physical Characteristics of the Region

The Town is located only 26 miles from Madison Wisconsin, the Capital, in Green County. Green County has many recreational amenities such as the Sugar River State Trail, Badger State Trail, New Glarus State Woods and the Albany Wildlife Area. The Sugar River Trail connects New Glarus to Monticello, Albany and finally to Brodhead for a total of 23 miles. The Badger State Trail connects to the Sugar River Trail in Monticello which is only six miles from New Glarus. The Badger State Trail connects to an additional 40 miles between Madison and the Wisconsin –Illinois border. These trail systems connect to larger trail systems in Wisconsin such as the Military Ridge State Trail and the Ice Age National Scenic Trail.

Topography, Soils, and Water Resources

The Town of New Glarus is located in the Southwestern Wisconsin Driftless Area, a unique geological region that was untouched by the Wisconsin Glacier. This creates a notable contrast with the remainder of the state, where the continental glacier scraped away nearly all the residual soil and left a sheet of transported soil.

The Town area's topography creates dramatic viewsheds and is ideal for biking, hiking, sightseeing, skiing and other outdoor activities. There are eight soil associations in Green County which include:

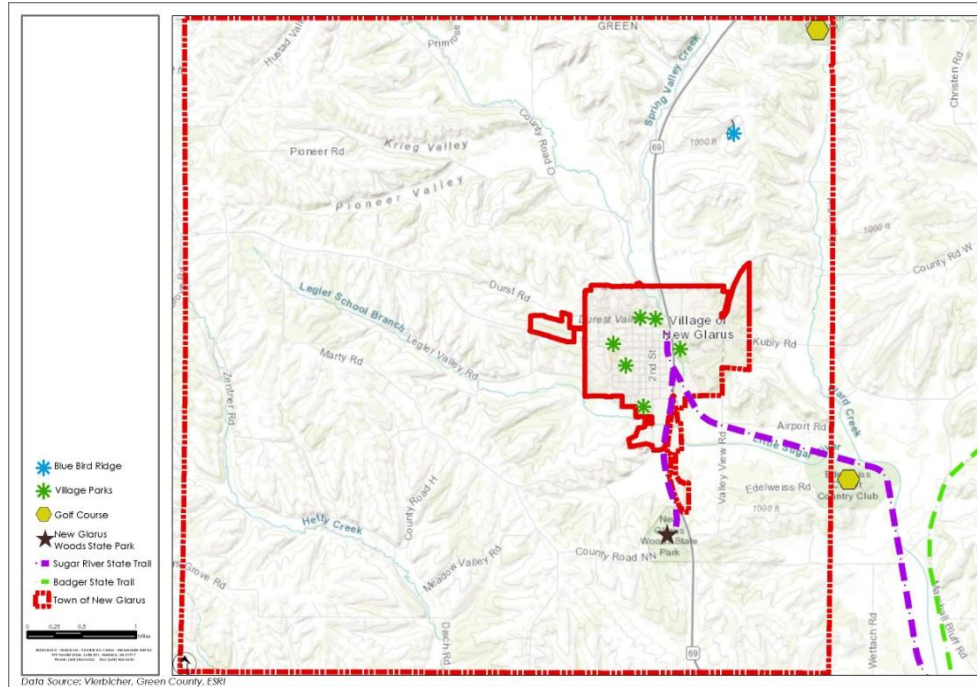
- Dodgeville-Edmund
- New Glarus-Sogn
- Fayette-Tama
- Dunbarton-Whalan
- Hebron-Saylesville
- Orion-Huntsville-Ettrick
- Durand-Myrtle-Rockton
- Dickinson-Meridian

The town is located in the Little Sugar River watershed and has two waterways running through it: The Little Sugar River and the Legler School Branch.

Outdoor Recreation Supply

While the town does not currently have a community park, it does have the Bluebird Ridge Conservancy and access to park facilities and programming through the school district and the village. Figure 5 illustrates the available outdoor recreation opportunities discussed in the following section.

Figure 5: Available Outdoor Recreation Opportunities



Bluebird Ridge Conservancy

In the Town of New Glarus, the Bluebird Ridge Conservancy is a 4.29 acre area accessed through a forty foot-wide frontage on Windmill Ridge Road. The town installed a sign marking the conservancy in spring 2011. A narrow grassy path runs 175 feet off Windmill Ridge Road. At that point, the lot widens to resemble the shape of a diamond. There is a natural oak savannah area in the center with attractive views of the country side. Major plantings in the conservancy include: White Oak, Black Cherry, Prickly Ash, Sumac, Mulberry, Dogwood, Viburnum, and Buckthorn. Timothy and Brome are the major grass species.

Long-term plans for the park include the study of

oak savannahs and prairies that were native to this area prior to the arrival of European settlers, and development of habitat to support wildlife such as the Eastern Bluebird.

School District Facilities

The New Glarus School District's parks consists of an official football/soccer field north of the elementary school, practice fields for football and soccer south of the elementary school, and

outdoor basketball courts south of the high school. The park also consists of three tennis courts, which have been resurfaced and are open for public use when they are not in use by the schools.

Village Facilities

Town residents have the ability to use the Village of New Glarus Parks and Park Shelters. The Village has five parks that include such amenities as a fishing pond, playground equipment, soccer fields, baseball fields,

tennis courts, a sand volleyball court, picnic areas, water fountains, shelters, and a swimming pool. The following is the list of parks in the Village:

- Hoesly Pond
- Candycane Park
- Valle Tell Park
- Veteran's Memorial Park
- Village Park

Additionally, town residents have the opportunity to use village recreational programming. The village started using a different online program for registering recreational participants; therefore the reports do not generate numbers for each activity as previous reports. The reports generate numbers for total park program participants and pool passes for residents and non-residents. Non-residents do not exclusively mean Town of New Glarus residents. Appendix B contains the fee resolutions for 2016. The following is the amount of village resident and non-resident participation

in parks programs and pool membership.

Table 2: Park Program Participation

Park Programs	Resident	Non-Resident	Non-Resident %
2015	108	139	56%
2016	103	146	59%

Table 3: Pool Membership Participation, 2015

Pool Passes	2015		
	Resident	Non-Resident	Non-Resident %
Family	104	61	37%
Single	26	11	30%
Child	10	9	47%

Table 4: Pool Membership Participation, 2016

Pool Passes	2016		
	Resident	Non-Resident	Non-Resident %
Family	114	81	42%
Single	25	13	34%
Child	7	5	42%

New Glarus Woods State Park

The New Glarus Woods State Park is located within the Town of New Glarus. The park has approximately 105 acres, 38 campgrounds, eight trails and the Sugar River Trail spur (1.6 miles) that connects to the Village of New Glarus. See Appendix C for the New Glarus Woods State Park.

Existing Trails

As discussed previously, the Sugar River State Trail passes through the Town of New Glarus and connects to areas outside the town that include communities in Green County. Additionally, in Monticello the Sugar River State Trail connects to the Badger State Trail, which connects to additional trails in the State of Wisconsin and the State of Illinois. Green County recently developed an on-road rural bike route online map for Green County (figure 6). The route travels along New Glarus city streets, Kubly Road, Airport Road, Valley View Road, Argue Road, Tunnel Road, Marshall Bluff Road, Exeter Crossing Road, County Highways D and C, and County Road EE. University of Wisconsin-Platteville engineering students developed the map based on state

standards for on-road bicycling.¹

Figure 6: Green County On-road Bicycle Map



Impact Fees & 2017 Budget

The town implemented a lump sum impact of \$3,562 for each new residential unit built. The goal of the impact fee is to assist in funding community parks and trails. The following items show the impact distribution:

- Public Library Facilities - \$1,181
- Parks and Playgrounds - \$1,481
- Highways and Transportation Facilities - \$900

The Parks Commission Budget is allocated to the following line items:

- Town Park/Town Trail Sinking Fund - \$4,500
- Trail Development - \$500
- Per Diems - \$2,405
- Payroll Taxes - \$181
- Parks Workshops/Projects - \$4,938
- Park Postage - \$250
- Printing - \$300
- Arbor Day Tree Planting - \$300
- TPE Membership, New Glarus Woods - \$300
- Recruitment - \$100
- Pool Scholarships - \$26
- Maintenance/Restoration of BRC - \$1,200

¹ A Bike Tour: The City of Monroe and Green County <https://swwrpc.maps.arcgis.com/apps/MapJournal/index.html?appid=89ab32a5a2984108bb8f31a067ba9822>

Needs Assessment

To accomplish the outdoor recreation needs assessment, Vierbicher and the Town Parks Commission developed an outreach strategy for the Town of New Glarus.

Three public meetings were held allowing for the community to learn about the CORP and provide feedback on needs, goals, and objectives.

During the Plan Commission meeting, Plan commission members and Park committee members discussed potential future parks, the size requirements, and where to locate the park. The Plan Commission is concerned about future development and providing closer amenities for town residents.

Sample Recreation Open Space Standards

Park and Open Space Standards and Guidelines for the Plan Commission and Parks Committee govern the process for locating future parks. There are three typical sizes of local parks the Town would provide: a mini-park, a neighborhood park, or a community park. Each size park has a recommended service area (distance to park),

Table 5: Sample Recreation and Open Space Standards

Park Type	Service Area	Desireable Size	Acres/1,000 Population	Use	Site Location
Mini Park	Less than ¼ mile radius	One acre or less	.25 to .50 acres	Specialized facilities that serve a concentrated or limited population or specific group such as young children or senior citizens.	Within neighborhoods or adjacent to schools, elderly housing. The facility should be easily accessible by walking for senior citizens or parents with small children.
Neighborhood Park	¼ to ½ mile radius to serve population up to 5,000 (a neighborhood)	15+ acres	1.0 to 2.0 acres	Area of intense recreational activities such as field games, court games, crafts, neighborhood center.	Proximity to elementary schools, or centrally located in developed areas with safe walking and biking areas.
Community Park	Several neighborhoods 1 to 2 mile radius	25+ acres	5.0 to 8.0 acres	Area of natural or ornamental quality for outdoor recreation such as walking, viewing, sitting, picnicking, could have some field and court games.	Proximity to community facilities and resources.

desirable size, (number of acres per one thousand people), and desired site characteristics.

This classification system presented in table 5 is intended to serve as a guide to planning—not as an absolute blue-print. Sometimes more than one component may occur within the same site (but not on the same parcel of land), particularly with respect to special uses within a regional park. Planners of park and recreation systems should be careful to provide adequate land for each functional component when this occurs.

The National Recreation and Park Association (NRPA) suggests that a park system, at a minimum, should be composed of a “core” system of parklands, with a total of 6.25 to 10.5 acres of developed open space per one thousand people. The size and amount of “adjunct” parklands will vary from community to community, but must be taken into account when considering a total, well-rounded system of parks and recreation areas.²

Table 5 communicates the recommended standards for service area, size, density, use, and site location. Mini parks are the smallest type of Municipal Park, ideally spanning no more than one acre of land and designed to service no

² Source: Roger A. Lancaster, Ed. 1983 Recreation, Park and Open Space Standards and Guidelines. Alexandria, Virginia; National Recreation and Park Association

more than the quarter-mile radius surrounding the park. Neighborhood parks are the next largest type, preferably spanning at least 15 acres of land and serving up to a half-mile radius in every direction. These parks generally accommodate approximately 5,000 users—roughly the size of a city neighborhood.

Community parks are the largest park type. Designed to serve users within a 1 to 2 mile radius, community parks are ideally no less than 25 acres in size, with a density of 5 to 8 acres per thousand users. Parcel sizes are typically one acre for mini parks, two acres for neighborhood parks, and five acres for community parks.

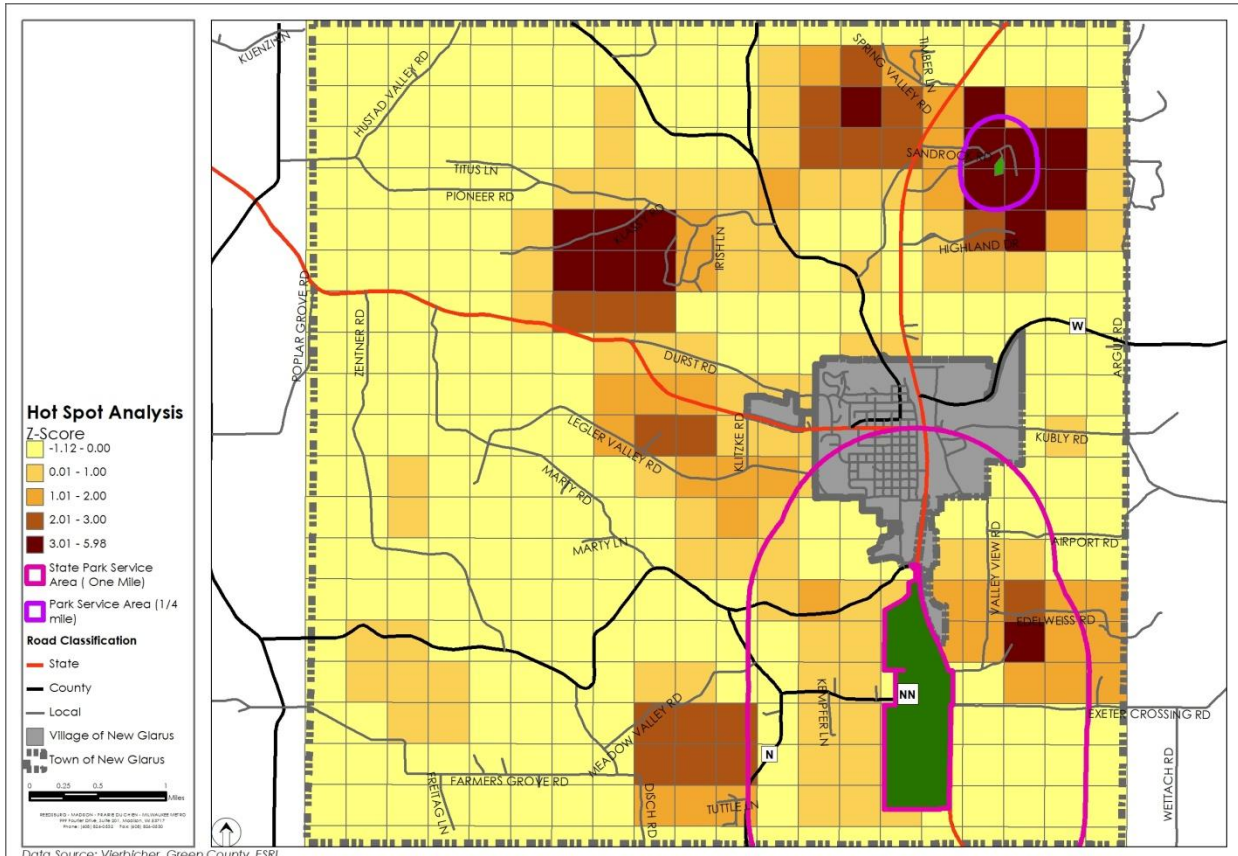
Placement of parks is dependent on multiple factors. Parks should be easily accessible from commonly used pathways such as roads,

commercial or residential areas. Likewise, parks should be located in areas with high enough population densities to ensure adequate use.

Based on these criteria, there are multiple locations in the Town that would accommodate each type of park. Figure 7 shows a heat map of the Town based on population density. Dark brown areas indicate locations with the highest population densities, with gradually lighter colors indicating areas with lower population densities. Yellow areas generally indicate agriculture, open space, and undeveloped land, and green regions indicate the location of existing parks.

The Bluebird Ridge Conservancy and New Glarus Woods State Park are both located within the planning area and serve portions of the Town. A contiguous ring of moderate to higher density neighborhoods surrounds the municipal boundary

Figure 7: Population Density



sidewalks, or trails, and should function as a complement to surrounding uses. Residents and visitors are more likely to use parks if they are easily accessible from high population areas, and their construction fluidly mixes with surrounding

of the Village of New Glarus. New Glarus Woods State Park serves the southern half of the Village along with many of the southern residential areas in the Town. Bluebird Ridge Conservancy serves

the higher density residential area in the northeast of the planning area.

Demand for future parks is greatest in the higher density residential areas lying just west of the Village, along with the higher density areas in the Town's northern and northeastern portions, as shown on Figure 7. The Town could consider placing a large community park in low density areas along Old Madison Road in order to capture residents from the three large clusters of high population density in the northern half of the planning area. Location of a neighborhood or community park would also capture large numbers of residents if located off of either Durst Road or Legler Valley Road due west of the Village boundary.

Factors affecting when to build new parks include: possible changes to land use, population growth, and expected development patterns. While retrofitting of old development into parkland is a possibility, these circumstances generally mean that a municipality has less control over the aesthetics and design of the park. Plans for future parks in low density areas should be considered well in advance of development to ensure parks harmoniously complement adjacent uses. Population growth is the second determining factor contributing to decisions about park placement. The Town's population is expected to grow by 44% between 2016 and 2040, adding substantial future demand for recreational opportunities. The Town should monitor expected population changes and identify areas of expected future growth.

Community Survey

A survey was distributed online, made available in hard copies at the Town Hall, and a postcard (figure 8) was sent to 535 homes informing residents of the online survey and the available hard copy. In total, 87 individuals and 75 households completed the survey, a 14 percent household completion rate.

The survey results were shared with the Parks Commission, on the town's website, and at a

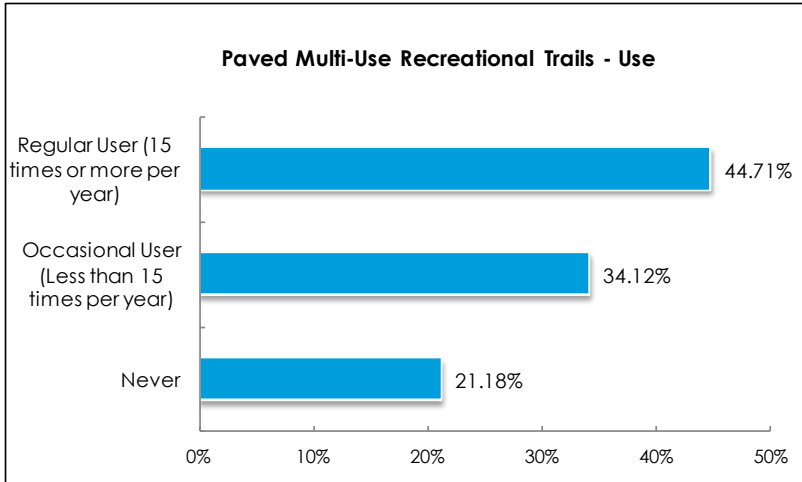
public forum held on April 27, 2017. The results of the survey, public forum, and evaluation were instrumental in framing the outdoor needs assessment.

The primary purpose of the survey was to understand the current usage of available amenities, and identify the need for future parks, facilities, and recreational spaces. Figures 9 - 13 show that 45 percent of the survey participants are regular users of the paved multi-use recreational trails and parks in the Village, 59 percent are satisfied with the trails, 57 percent are satisfied with the parks and conservancies, and 63 percent believe open space, native plants, wildlife protection, and natural resource conservation is very important.

Survey participants noted in the open-ended questions that they favor more trails that connect town neighborhoods, village amenities, and regional trails. Several comments mentioned that a community center containing an indoor pool, fitness facilities, multi-purpose gyms, and a walking track are desired. It was also mentioned that if the town supports the village park and recreation program, then the park programming fee should be lower for Town of New Glarus residents.

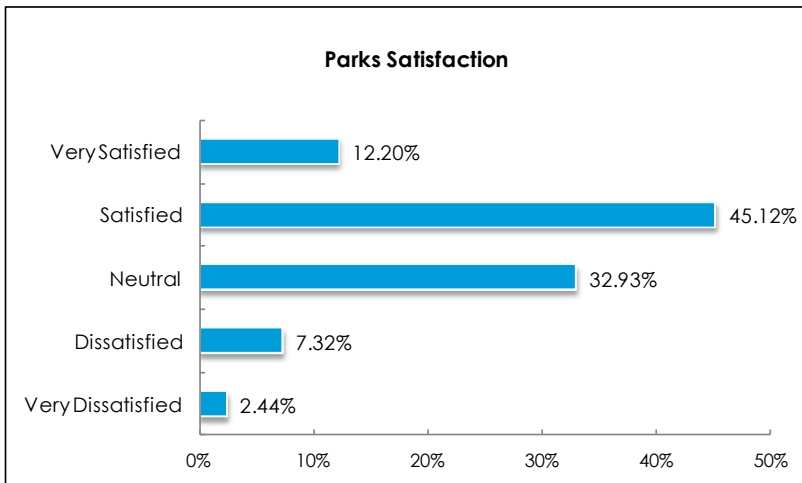


Figure 9: Paved Multi-use Recreational Trails - Use



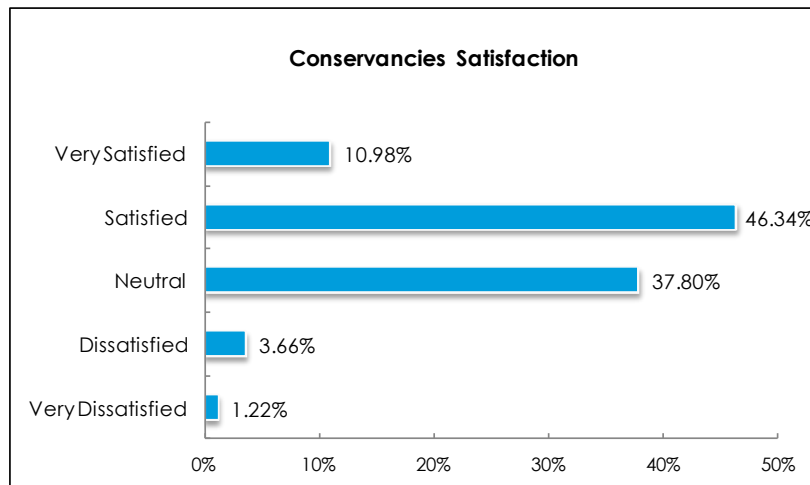
Would like to see a trail linking the Town to the Village going north. – Community Survey Participant

Figure 10: Parks Satisfaction



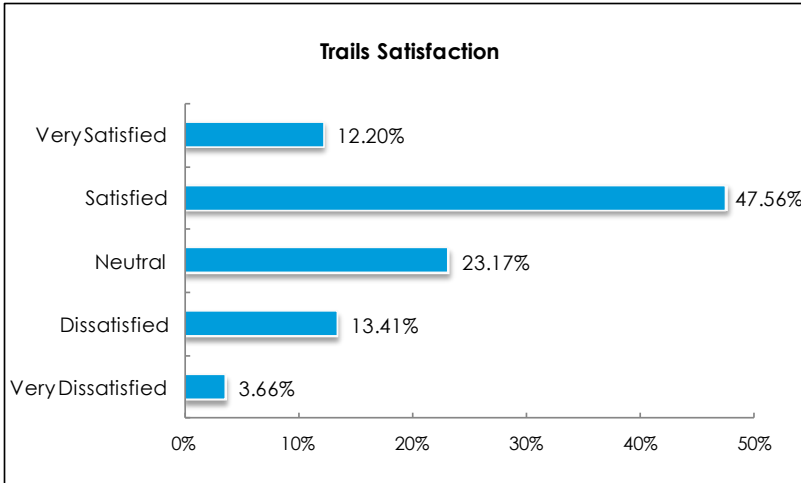
Would like to see swimming access year round. – Community Survey Participant

Figure 11: Conservancies Satisfaction



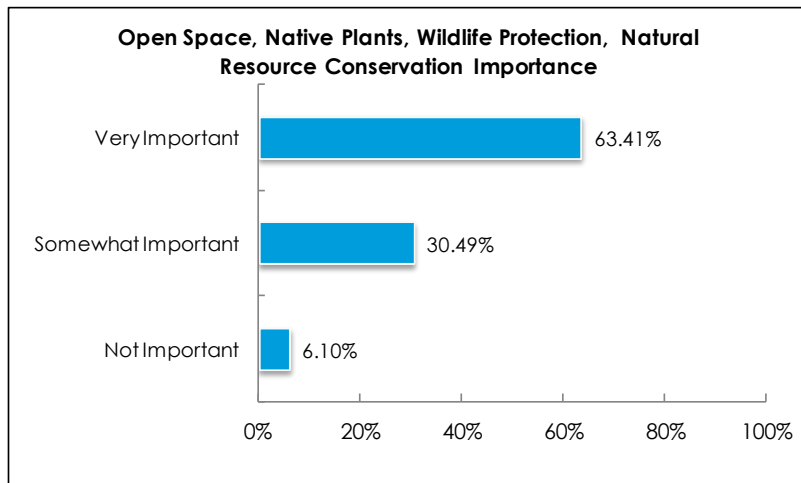
"Our biggest interest is connecting the town (perhaps along Hwy 69 initially) with the recreational/bike trail that starts in New Glarus (Sugar River Trail). We utilize the pool a lot in the summer - we meet a lot of town and village neighbors at the pool. – Community Survey Participant

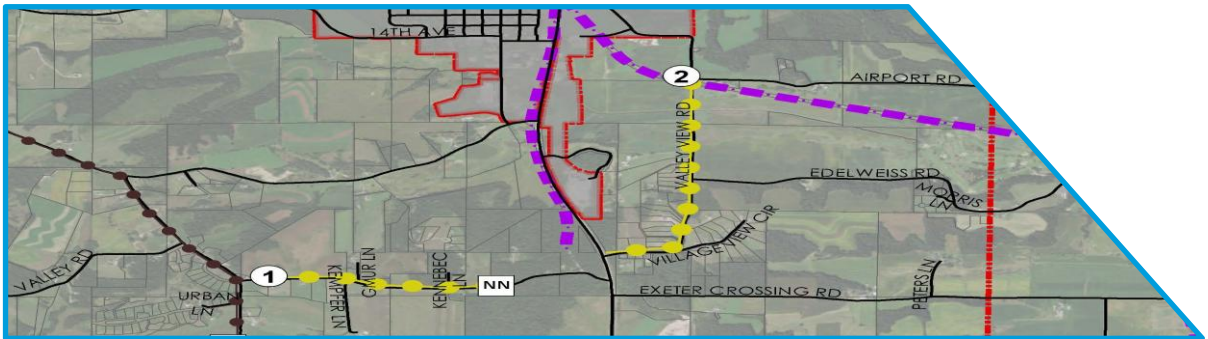
Figure 12: Trails Satisfaction



It would be great to have a bike trail that connected the Spring Valley and Windmill Ridge communities with the village. Bike riding along Hwy. 69 is dangerous. – Community Survey Participant

Figure 13: Open Space, Native Plants, Wildlife Protection, Natural Resource Conservation Importance





RECOMMENDATIONS

RECOMMENDATIONS

Despite being a small community, the Town has great opportunity to provide active and passive recreational activities and to connect recreational activities inside and outside of the Town. The recommendations in this section have been developed based on feedback from citizens of the Town, and discussions within the Parks Commission, and Plan Commission. As the Town develops, the development policies of the Town may provide opportunities to expand upon these initial recommendations.

The CORP Committee spent time during the first public forum identifying potential trails that connect to neighborhoods, state parks, the Village, and the Sugar River Trail. At the second public forum, the CORP committee discussed the community-wide survey results; specifically the demand for a trail to connect the northern subdivisions to the Village. The focus of the discussions was to enhance the existing Town facilities and provide better connections between the residents and these facilities. Creation of new facilities (other than new connections or trails) was not considered a significant priority at this time.

The CORP committee identified nine potential trails and ranked their priority for connections based on the community survey, existing connections, and potential future development. Table 6 identifies the potential future trails, the priority, length, and location. Initially, the CORP committee had identified trail number 4 as a medium priority, but the community survey responses led the Committee to recommend this segment be considered a high priority. It is assumed that the majority of trail locations will be in the public right-of-way. However, in certain locations, the Town will work with local property owners to negotiate access easements for public trails. The trail construction type has not been identified for each trail at this time, but generally, the trails considered would be a grass or crushed stone surface.

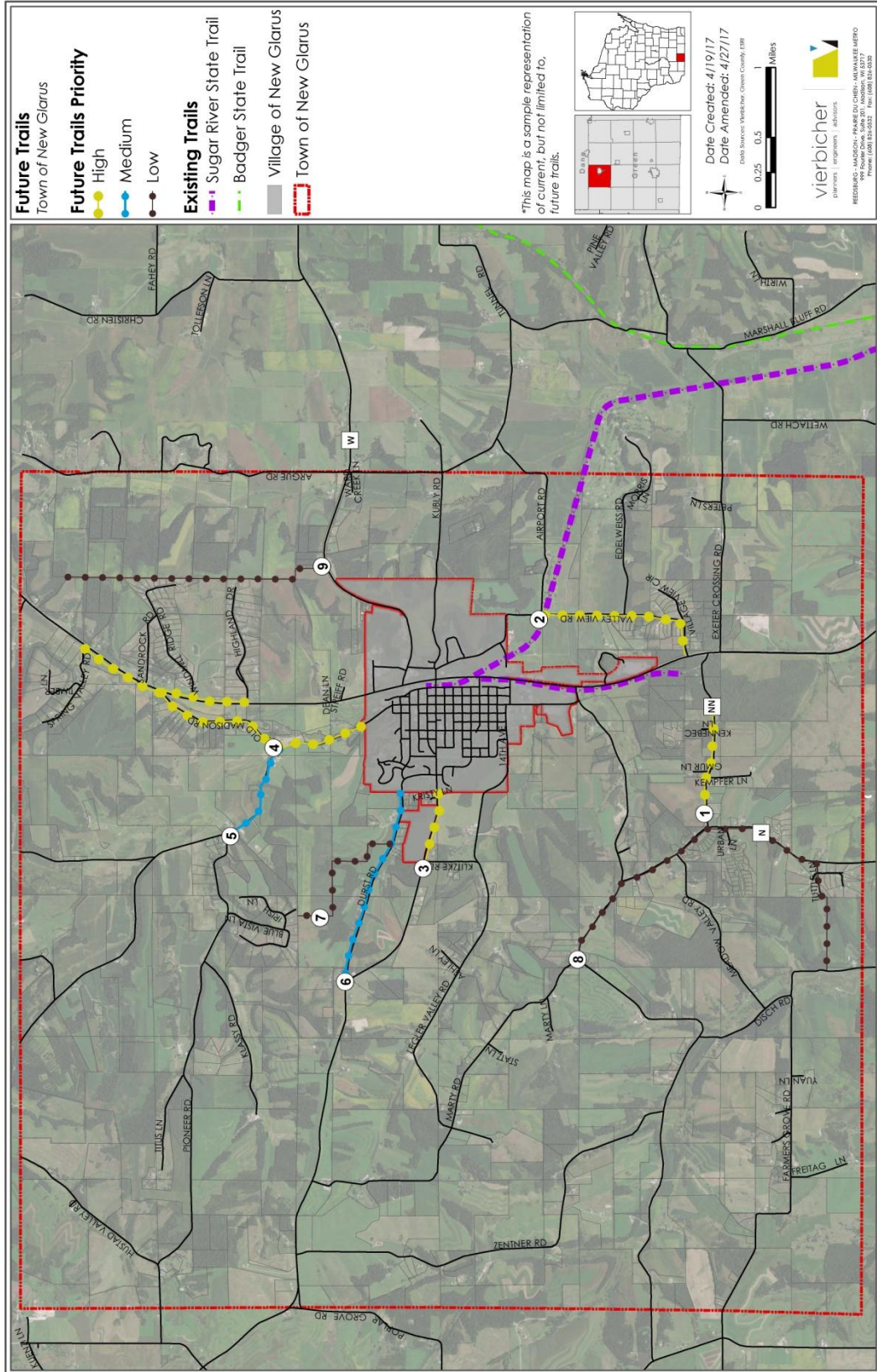
Figure 14 shows the potential trails along with the corresponding Trail ID numbers and priority levels. This map represents both existing and potential future trails. Additional research and surveying will need to be completed to determine the placement and construction type of trails. These trails are intended to connect various locations within the Town and to increase access to the community parks system. Because these trails will serve the entire Town by increasing access and connectivity, it is justifiable to consider impact fees as a method to capture the portion of costs attributable to new development.

Executing these recommendations is essential to accomplishing the goals and objectives of this plan. On the following pages, tables presenting the list of Goals in the 'Plan Goals and Objectives' section, are paired with strategies to achieve the goal, a time frame, and responsible parties or partners for implementation. A significant component of implementing the plan goals is collaboration between large and small acreage landowners, developers, and the Town Committees and Boards. Balancing the Town goals with individual property owners' rights is paramount to maintaining goodwill throughout the community and fostering an environment that supports the plan goals. Achieving plan goals using the condemnation process is not desired.

Table 6: Potential Future Trails Information

Trail ID	Priority	Length	Location
1	High	0.74	County Highway NN - from County Highway N to beginning of New Glarus State Woods Park boundary.
2	High	1.22	Valley View Rd - from Sugar River Trail to Highway 69.
3	High	0.49	County Trunk 39 - from Klitzke Rd to Village boundary.
4	High	2.87	County O to Old Madison Rd - From County Highway O at the Village Boundary, right on to Old Madison Rd to Highway 69 then split north to Spring Valley Rd and split south to Windmill Ridge Rd.
5	Medium	0.75	County Highway O - from Highway U to Old Madison Rd.
6	Medium	1.4	Durst Rd - from Village boundary 1.41 miles west
7	Low	1.18	Through property from Durst Rd to connect Blue Vista Ln (route not determined).
8	Low	3	County Highway N From Rustic 81 Rd, right on Hefy Lane to Disch Rd.
9	Low	1.9	Through property from County Highway W north 1.9 miles (route not determined).

Figure 14: Town of New Glarus Potential Future Trails



Town of New Glarus CORP Recommendations			
Goal	Strategy	Time frame	Responsible Parties
G1	Continue to search for a site appropriate for a Town park.	Ongoing	Parks Commission, Joint Parks Commission, Plan Commission, School District
G1	Research the demand and feasibility of adding soccer and baseball fields or coordinating with other communities in Green County for the increased demand for fields.	Ongoing	Parks Commission, Green County Property Committee, Insurance Committee, Green County Leaders, School Districts, Joint Parks Commission, Soccer Associations
G1	Support current and future summer recreation activities as identified by Town residents.	Ongoing	Parks Commission, Joint Parks Commission
G1	Continue the restoration efforts of the prairie remnant and oak savanna at the Blue Bird Ridge Conservancy and promote its use as a classroom tool.	Ongoing	Parks Commission
G1 & G2	Develop the trails identified in the Future Trails Map.	Ongoing	Parks Commission, Town residents, Green County Tri-county trails committee
G2	Add "Refer to CORP" to a development checklist to make sure park and trail recommendations are included in developer's plans	Short-Term	Town Administrator, Plan Commission, Parks Commission
G2	Ensure land owners, town residents and DNR have input in the trail development.	Ongoing	Parks Commission
G2	Collect park impact fees from new developments sufficient to meet the anticipated cost of providing park improvements.	Ongoing	Parks Commission, Plan Commission
G2	Purchase or secure easements for trails.	Ongoing	Parks Commission, Plan Commission, Technical Review Committee
G2	Identify existing and potential schools, parks, paths, Ice Age Trail and community connection points.	Ongoing	Parks Commission
G2	Establish a community park fund for donations.	Immediate	Parks Commission and Town Board
G2	Continue to dedicate a percentage of each year's park budget account for trail development.	Ongoing	Parks Commission
G2	Utilize best management practices to install trails including access for disabled users.	Ongoing	Parks Commission
G2	Research and obtain grants to support trail development.	Ongoing	Parks Commission, Joint Parks Commission, Town Board, Village Board

Town of New Glarus CORP Recommendations			
Goal	Strategy	Time frame	Responsible Parties
G2	Acquire land through combination of state grants, federal grants, county grants, gifts, donations, and town resources.	Ongoing	Parks Commission
G3	Mark conservancy areas with proper signage and list on Park Master Plan map.	Ongoing	Parks Commission
G3	Identify naturalist and environmental groups to assist with preservation and grant resources.	Ongoing	Parks Commission
G3	Establish guidelines to accept or acquire land for future development or preservations.	Short-Term	Parks Commission
G3	Consult with the Green County Forester regarding the Town tree planting program for interested property owners.	Ongoing	Parks Commission
G4	Work with the Village to reduce the Town of New Glarus non-resident fee for park programming and pool pass.	Ongoing	Parks Commission
G4	Continue to work with the Village on building a joint community center.	Ongoing	Parks Commission, Joint Parks Commission
G4	Fully cooperate and support Village park programming.	Ongoing	Parks Commission, Joint Parks Commission
G4	Create partnership guidebook that includes engagement with the business community, press releases, recognizing the business support in the news and online, and potential	Immediate and ongoing	Parks Commission
G5	Create a volunteer database that receives quarterly notices about volunteer opportunities. Utilize the contact information from the community survey of participants that noted to be notified of volunteer opportunities.	Immediate and ongoing	Parks Commission
G5	Continue to provide the workshops and look to develop new workshops.	Ongoing	Parks Commission



APPENDIX A - COMMUNITY SURVEY RESULTS

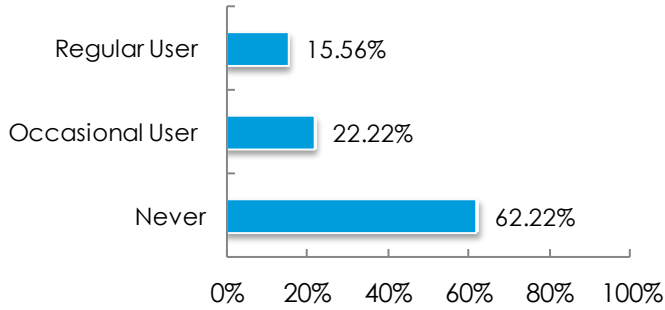
COMMUNITY SURVEY RESULTS

The following recreational opportunities and facilities are available at the Town and Village parks and conservancies. Please indicate how often your household uses each of these amenities.

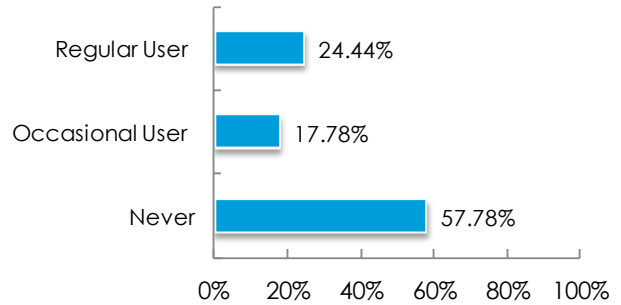
Regular User : More than 15 times or a year

Occasional User: Less than 15 times per year

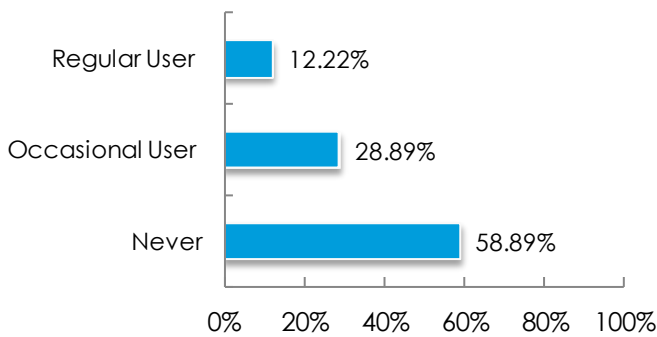
Usage: Baseball/Softball Fields



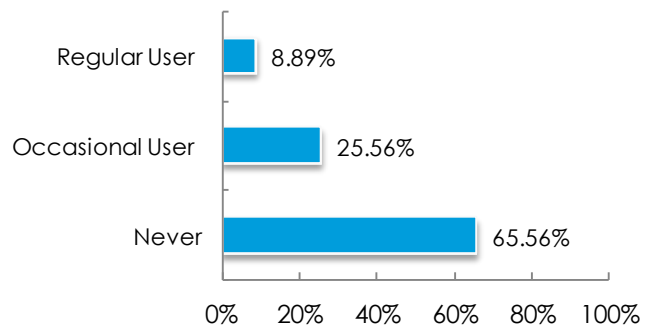
Usage: Soccer Fields



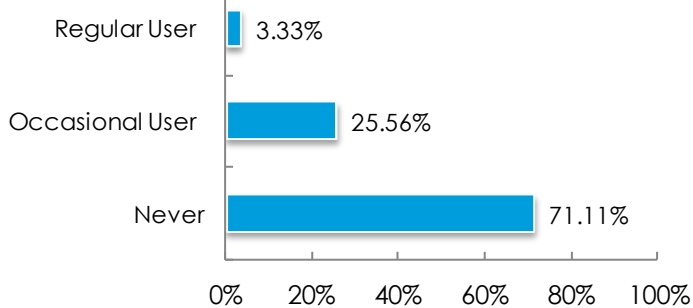
Usage: Basketball Courts



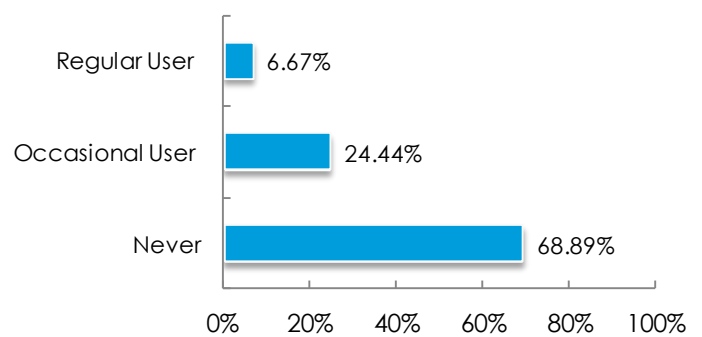
Usage: Tennis Courts



Usage: Bluebird Ridge Conservancy (Wind Mill Ridge Rd.)



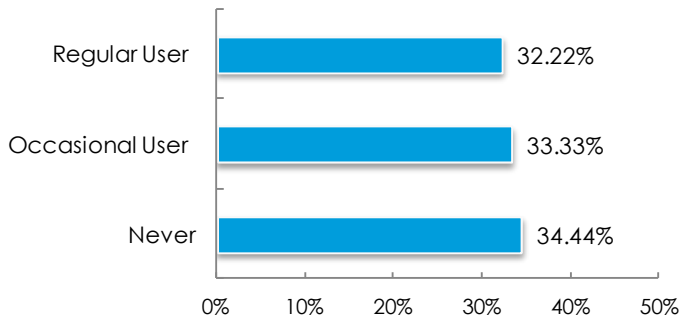
Usage: Sand Volleyball Court



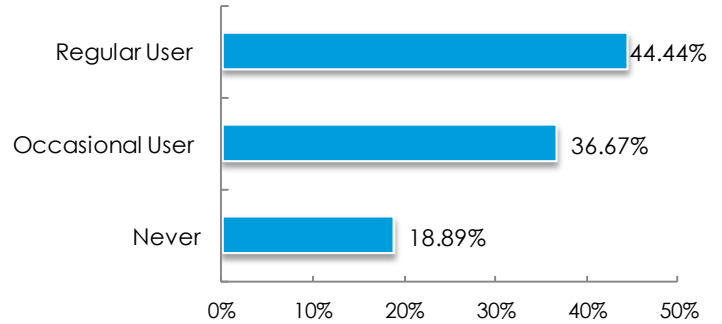
COMMUNITY SURVEY RESULTS

The following recreational opportunities and facilities are available at the Town and Village parks and conservancies. Please indicate how often your household uses each of these amenities.
 Regular User : More than 15 times or a year
 Occasional User: Less than 15 times per year

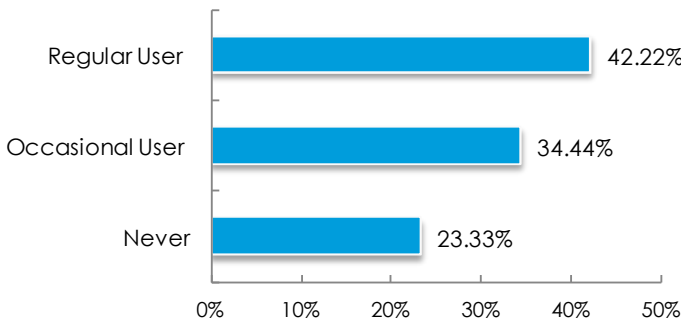
Usage: Public Swimming Pool



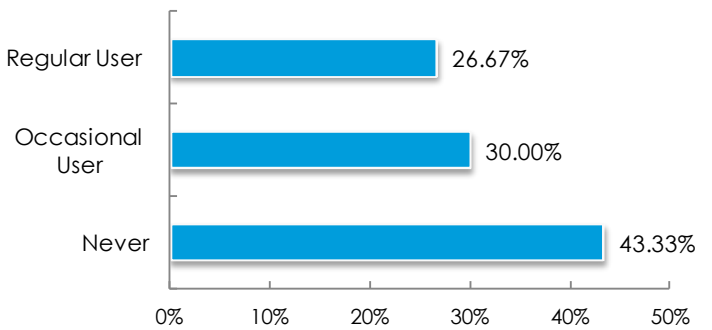
Usage: Natural Surface Recreational Trails (including grass and crushed stone)



Usage: Paved Multi-Use Recreational Trails



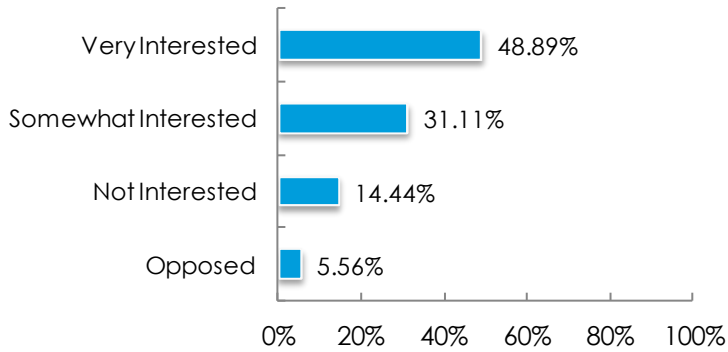
Usage: Playgrounds and Equipment



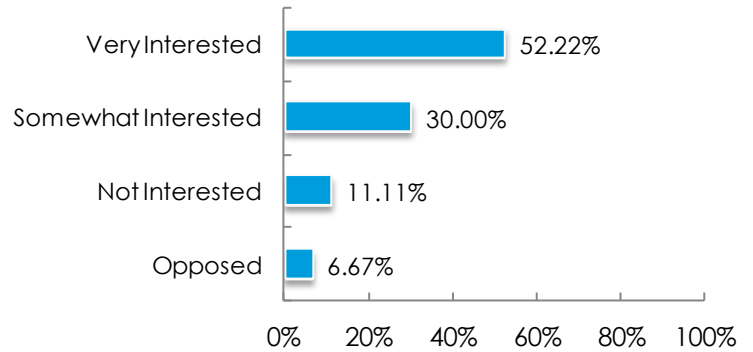
COMMUNITY SURVEY RESULTS

The following recreational facilities are NOT available in the TOWN of New Glarus. Please rate each of the following items regarding your household's interest in the TOWN exploring these services.

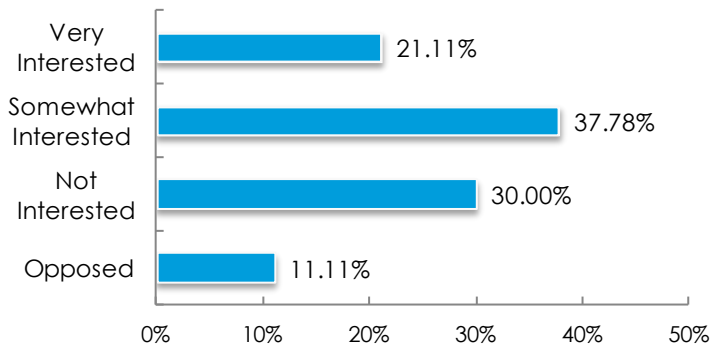
Interest: Bike Trail



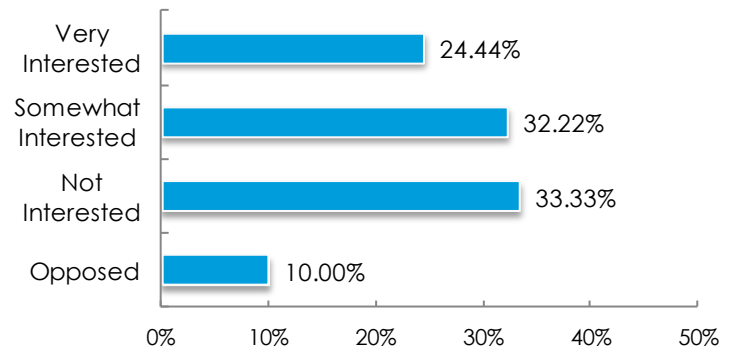
Interest: Trail linking Town and Village



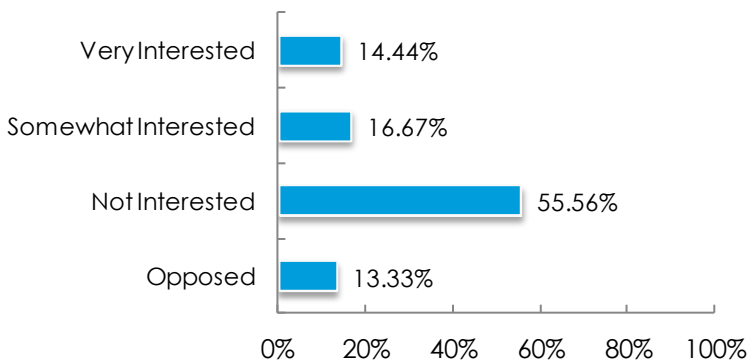
Interest: Sectional Trails within Town



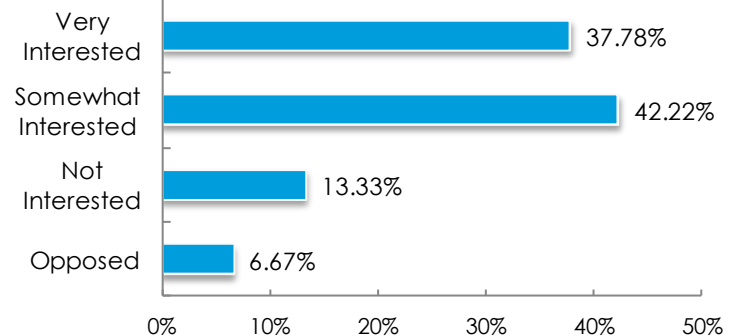
Interest: Cross-Country Ski Trails



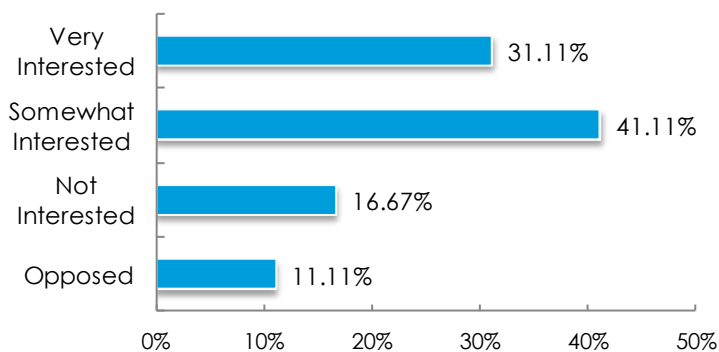
Interest: Horseback Riding Trails



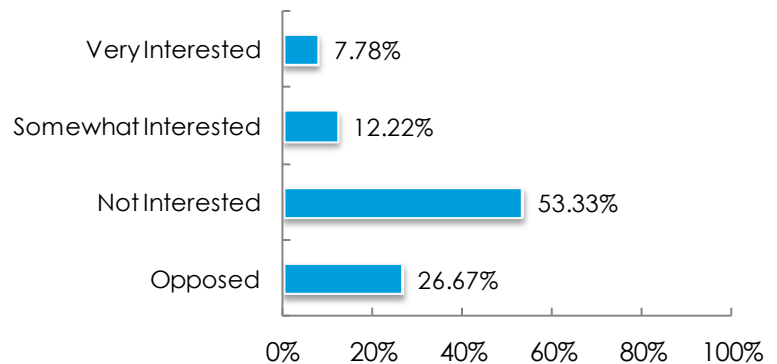
Interest: Natural Surface Recreational Trails (including grass and crushed stone)



Interest: Paved Multi-Use Recreational Trails



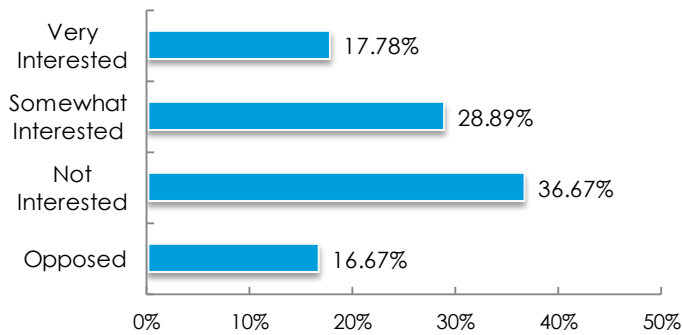
Interest: Snowmobile Trails



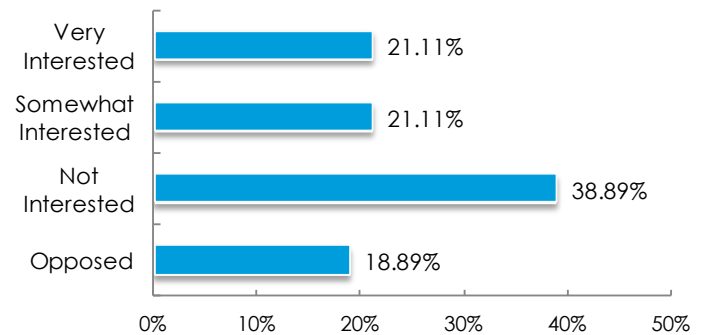
COMMUNITY SURVEY RESULTS

The following recreational facilities are NOT available in the TOWN of New Glarus. Please rate each of the following items regarding your household's interest in the TOWN exploring these services.

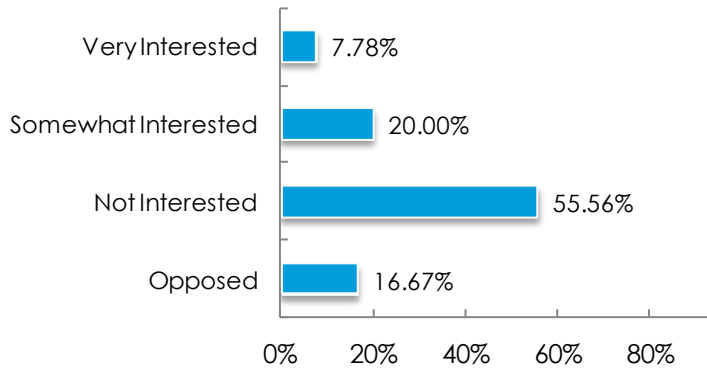
Interest: Exercise Stations on Trails



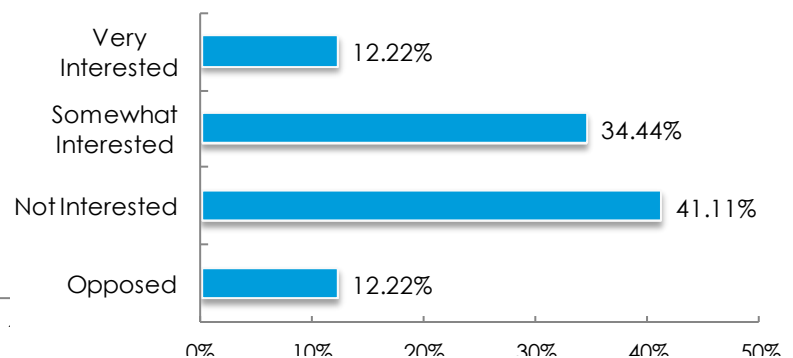
Interest: Dog Exercise Areas



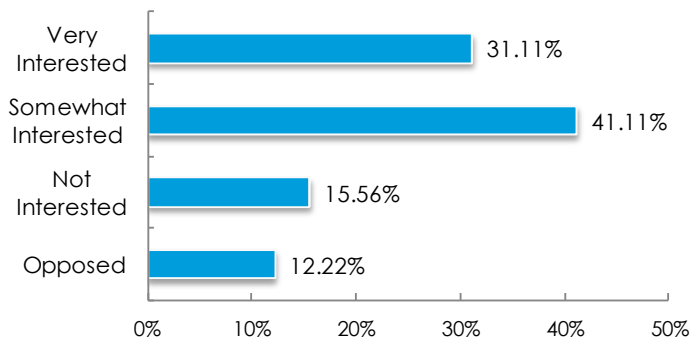
Interest: Football/Lacrosse Fields



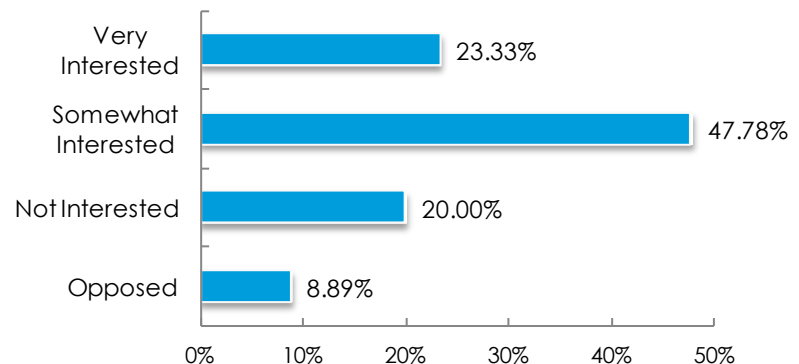
Interest: Frisbee Golf Course



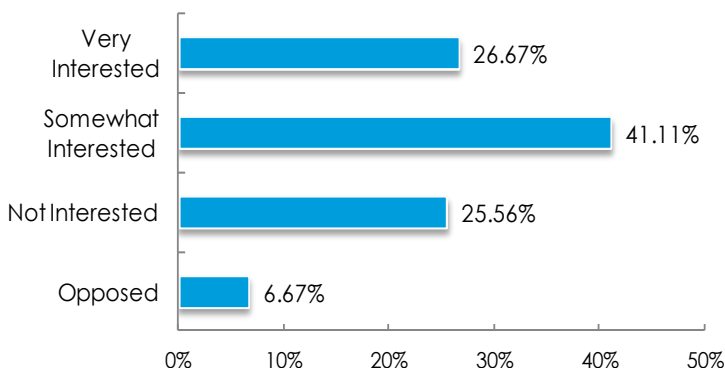
Interest: Indoor Community Recreation Center



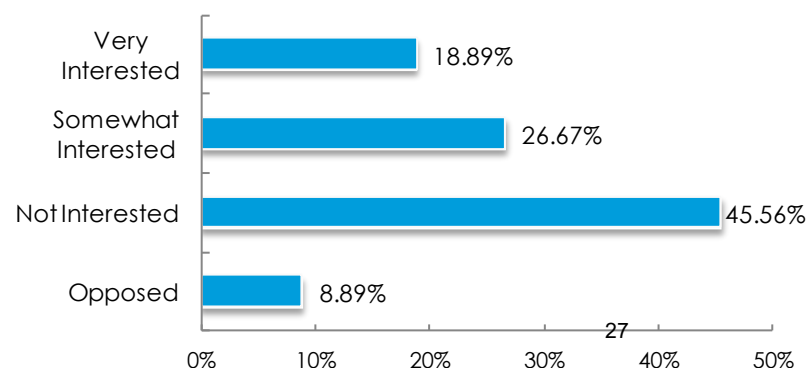
Interest: Outdoor Ice Skating Rink



Interest: Adult Recreational Programs



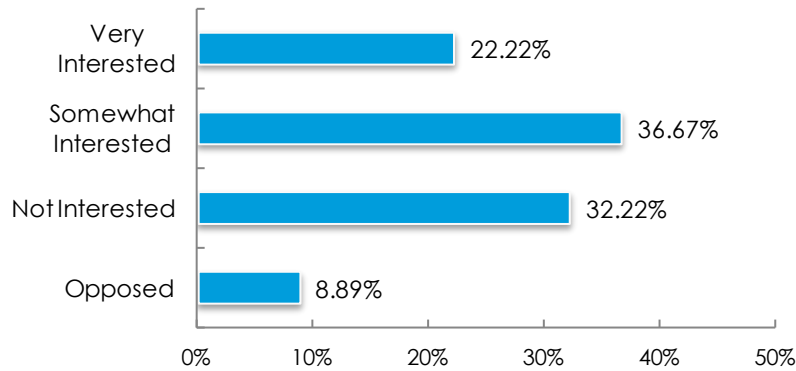
Interest: School-year Recreational Programs



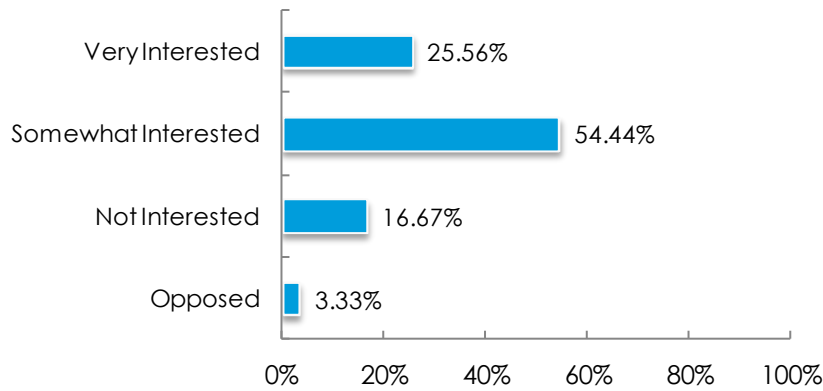
COMMUNITY SURVEY RESULTS

The following recreational facilities are NOT available in the TOWN of New Glarus. Please rate each of the following items regarding your household's interest in the TOWN exploring these services.

Interest: Summer Recreational Programs



Interest: Educational Workshops



COMMUNITY SURVEY RESULTS

If there is a recreation amenity that the Town does not currently provide and not listed above that you wish to see provided, please indicate it below (open-ended question).

1. Seriously, dog friendly park. Off leash especially.
2. Indoor pool
3. Trails that connect town and village, especially in loops.
4. "Curling - I think it would be great to have an indoor facility where we could have curling! Lessons could be given, competitions could be held - increase winter tourism. Maybe we would wind up with Olympians from New Glarus!
5. Camping, cabins, fishing, kayaking, canoeing - even though the pond is small, lessons could be held there. "
6. Trapping and hunting locations
7. Would love to see Ice Skating and Baseball Fields.
8. Swimming access year round
9. Indoor year round swimming pool
10. "We do have a snowmobile trail running through the Town of New Glarus. We do have a state park in the Town of New Glarus that offers many outdoor opportunities. We do have a bike trail that runs through the Town of New Glarus. We do have many areas of open space in the Town of New Glarus that only if people would be more neighborly the land owners would allow many of the activities listed above. How can you say that we do not have many of the recreational facilities available. Many landowners allow hunting on their land also."

COMMUNITY SURVEY RESULTS

Please provide any comments or suggestions regarding the development of new facilities and/or services below (open-ended question).

1. "Would be nice to have paved bike trails on side of county/state highways within the township and/or connecting townships. Similar to how the Boulder Junction community in northern WI has developed. Information at <http://boulderjct.org/the-heart-of-vilas-county-bike-trail-system/>
2. Better walking/biking trail options or at least offering a reasonable gravel shoulder along roadways would give us a safer option.
3. Strongly opposed to ATV trails that are close to residential area. Safety, noise pollution are of concern.
4. "We would appreciate trails that support 'quiet sports' (hiking, biking, cross country skiing, horseback riding) and believe, based on our experience living in another community that developed these shared resources, that this type of recreational trails would bring value to the Town. Finding an appropriate place for the tennis courts and refurbishing the Veterans Park facilities should be a priority."
5. "I believe with all the families and school aged children that use the village parks, pools and patronize businesses, there should be a safe bike/walking trail from the north subdivisions into to New Glarus. Not only families, but all individuals could benefit from this trail. It would be a safe alternative than crossing Old Madison Road or attempting to travel on hwy 69 to get into the village. I have spoken with many people who would like this option. Thanks."
6. "Our biggest interest is connecting the town (perhaps along Hwy 69 initially) with the recreational/bike trail that starts in New Glarus (Sugar River Trail). We utilize the pool a lot in the summer - we meet a lot of town and village neighbors at the pool.
7. We believe a active and significant library is extremely important for the community.
8. I think the town needs to connect with the village more. The State trail is a gem that the town should connect to. A trail along Hwy 69 would connect the neighborhoods along Hwy 69 that are isolated from one another for the most part. No family should be riding their bikes or walking along this highway."
9. Keep the dog park out of Windmill Ridge Ridge! (which is echoed from a lot of the residents in the neighborhood) The park is not set up for it, there is no parking and we do not need to see an increase in traffic. Also, if you live in the township odds are that you have a few acres of land that your dog can run on anyway. The township residents would not use this facility but we would see an increase of users from the city and surrounding areas. I'm not looking to pay for a park that the town residents will not use but others will.
10. Would like to see a trail linking the Town to the Village going North. We would love to be in New Glarus more often but requiring to pack up a car isn't something we always want to do.
11. "Not in favor of using ATV's or snow mobiles on public roads or trails used for walking or biking. A rec center for all ages would provide greatly needed recreation and exercise opportunities for all ages throughout the year, especially during the winter months. Recently visited the Denver area where they are used extensively and are very popular. Communities there also use walking/running/biking trails extensively throughout small communities."
12. I am opposed to random trails that do not link to/from a destination that makes sense, like connecting the Town to the Village. Sectional, non-contiguous trails do not make sense to me and I do not think people will seek them out much, if at all. (The Blue Bird trail might be an exception).
13. No more freaking subdivisions.
14. Don't listen to the nay-sayers. More recreational opportunities would enhance our community for both residents and visitors, as well as be positives for folks thinking about moving here. Many folks with kids want safe access to trails for their kids. I'd love to be able to walk from my place to Bluebird Ridge without worrying that a landowner is going to come unglued by someone on a trail along the property line.
15. We own a sign company and would be interested in helping to beautify the village/town with beautiful signs. DOVE Designs, located in Monticello, WI.

COMMUNITY SURVEY RESULTS

Please provide any comments or suggestions regarding the development of new facilities and/or services below (open-ended question).

16. "More green/open spaces Come to a decision for a new library. We have a beautiful walking trail almost the entire length of the village and it is rarely used. I walk on the trail regularly and seldom meet anyone while I am walking at almost any time of the day. People should be encouraged to use what we have. Team with the village & schools to build a community wellness center. Could include indoor pool, walking track, multi-purpose gyms, fitness center. "<http://www.myswitzerland.com/en-us/top-hikes.html> I'd like to see more cross country walking trails on the order of Switzerland, across farm land, scenic spots, creeks. "
17. Need cost to truly answer. A better survey would include approximate cost.
18. "Would like to see something like a small YMCA bldg, Definitely interested in a vita course or par course. NGHS students developed a par course plan many years ago, but no money to build it. Definitely interested in pre-school, elementary programs offerings."
19. "It is often never necessary to reinvent the wheel, collaborative efforts need to be explored that provide facilities that can be used by a wide spectrum of people. Several years ago I was asked by a Village trustee about the pool bathhouse renovation; gave some input and ideas which could have used the facility year round and incorporated several of the ideas listed above.....10 plus years later we are addressing the same issues, costs have increased AND we really have changed almost nothing. The VISION and PLAN are critical."
20. When are we going to say enough is enough? It is time to hold a line on our budget and use taxpayer monies on those projects that benefit everybody not just a few.
21. I think you should be working closely with the Village of New Glarus to provide shared facilities and services for the New Glarus Community as a whole.
22. I live in the village but have owned property in the town for decades. Hunting is an overlooked activity. Maybe I missed it. The deer/car incidents are more common than ever. With development the opportunity to hunt is diminished. I walk through the state park regularly and seldom meet another person. I come face to face with wild life more than humans. Rather than spend tax dollars on something that won't be used, why not promote what we do have, like the bike trail and state park? Actually rather than always pointing fingers at the village for non support, why the the two municipalities get together and for one municipality? Why not build a library in the township and let the township pay for it and maintain it?
23. Horse trails would be awesome!
24. There are not enough baseball/softball fields or soccer/multi-purpose fields shared by the Town and the Village. As a volunteer coach for both the softball and soccer programs, I know that the fields are constantly in high demand and there are many conflicts with trying to schedule them for practices and games. Even if the Glarner Park field is replaced by the Village prior to the proposed library construction, there still are not enough diamonds to support the youth and high school programs. I lived in a similar sized school district prior to moving to New Glarus, which was made up of 3 small villages with a total population that was less than the size of the Village of New Glarus alone (550 people + 500 people + 300 people vs 2100 in New Glarus) - these towns shared 6 baseball/softball diamonds to support the programming. We have only two, both of which are aging facilities which could use updating. The Village currently charges more for the Town kids to participate in their summer programs than the Village kids - it seems to me that if the Town were to partner with the Village on constructing a sports complex or recreation center, the fees could be equalized so that both Town and Village residents were getting the same opportunities at the same price.
25. "Since the Village and Township and State Park are so closely linked there is no point in duplicating or competing with each others services. There has not been enough snow in the 25 years to warrant investment in trails that are exclusively utilized only during years of large snowfall"
26. It would be great to have a bike trail that connected the Spring Valley and Windmill Ridge communities with the village. Bike riding along Hwy. 69 is dangerous.

COMMUNITY SURVEY RESULTS

Please offer any comments and/or suggestions you may have regarding payment for the development and maintenance of recreational facilities below (open-ended question).

1. "Use the Impact Fees (Chapter 80) that are collected during new construction: Impact Fees (Chapter 80)
2. Public library facilities - \$1,181, Parks and playgrounds - \$1,481, Highways and transportation facilities - \$900, Storm and surface water treatment and collection - N/A, Total impact fee - \$3,562"
3. I am willing to pay modest increases in property tax for maintenance and development of community facilities but like to see partnership grants when possible.
4. Happy to pay for things we love through obvious taxes.
5. I assume the township would decide on one improvement and cost would have to be distributed to the whole population.
6. "Conservation and prairie restoration grants if available Maximize shared use of school facilities for recreation when possible rather than building another community structure using tax dollars."
7. Donations from area business and residents. May be grants or a referendum.
8. "We pay a year fee to use the pool, which is fair. Using the State trail requires a pass, which is fair. The town pays too much to the retirement community/facilities - more funding should go to exactly the programs this survey is asking about. Connecting people in the community and allowing families to enjoy community and the great scenery/environment the town has to offer. "
9. Don't want to pay for a dog park where the majority of users will be non Town of New Glarus residents.
10. Use fees
11. Both horse trails and dog park should be fee-based.
12. "DNR grants, USDA grants: Community Facilities Loan and Grant Program, <https://www.rd.usda.gov/programs-services/community-facilities-direct-loan-grant-program>; Rural Business Development Grants, .../[rural-business-development-grants](https://www.ruralbusinessdevelopmentgrants.gov/); (if Rural Community Development Initiative Grants reopen), Multi-agency programs involved with Partnership for Sustainable Communities, https://www.sustainablecommunities.gov/sites/sustainablecommunities.gov/files/docs/federal_resources_rural.pdf Possibly US-DOT-Federal Highway Administration - <https://www.transportation.gov/livability/grants-programs> - at one time had Scenic Byways Program - state scenic routes were eligible to apply for funds that 'could include construction of a facility for pedestrians and bicyclists; An improvement to a scenic byway that will enhance access to an area for the purpose of recreation; development of tourist information to the public (such as biking info and maps on scenic byways).' Perhaps there are non-profits that do the same. The programs under the Reconnecting America umbrella may be closed now, and probably wouldn't survive under the current administration anyway. Recreational Trails Program - administered by state, in WI through DNR: Ed Slaminski, Financial Assistance Specialist, WI-DNR, 715-635-41305, edward.slaminski@wisconsin.gov , 810 W Maple Street, Spooner WI 54801. and Brigit Brown, State Trails Coordinator, Bureau of Parks & Recreation, WI-DNR, 608-266-2183; Fax 608-267-7474, brigit.brown@wisconsin.gov, Pedestrian and Bicycle Safety, https://safety.fhwa.dot.gov/ped_bike/; Transportation Enhancement Activities https://www.fhwa.dot.gov/environment/transportation_enhancements/index.cfm Safe Routes to Schools, https://www.fhwa.dot.gov/environment/safe_routes_to_school/ <http://www.thegranthehelpers.com/municipal-grants/parks---recreation-grants>, <http://www.lib.niu.edu/2004/ip040923.html> Stretching Small Town Budgets, <https://www.ruralhealthinfo.org/funding/types/grants-and-contracts> Check out: Robert Wood Johnson Foundation - Building a Culture of Health; Change Incubator Funding: Healthier Wisconsin Partnership Program (HWPP); Alliant Energy grant programs; WI Dept of Health - promoting healthy lifestyles/change; Medica Foundation; Advancing a Healthier Wisconsin Endowment; WI Office of Rural Health; Info here could help sway resistant board and community members: http://activelivingresearch.org/sites/default/files/ALR_Brief_RuralCommunities_Sept2015.pdf : Promoting Active Living in Rural Communities <http://activelivingresearch.org/taxonomy/parks-recreation>, <https://wisconsin.grantwatch.com/grant-search.php> Grants to USA Nonprofits to Engage Youth in Outdoor Activities and Environmental Stewardship, Grants to Wisconsin Nonprofits to Promote Local Tourism Opportunities,

COMMUNITY SURVEY RESULTS

Please offer any comments and/or suggestions you may have regarding payment for the development and maintenance of recreational facilities below (open-ended question).

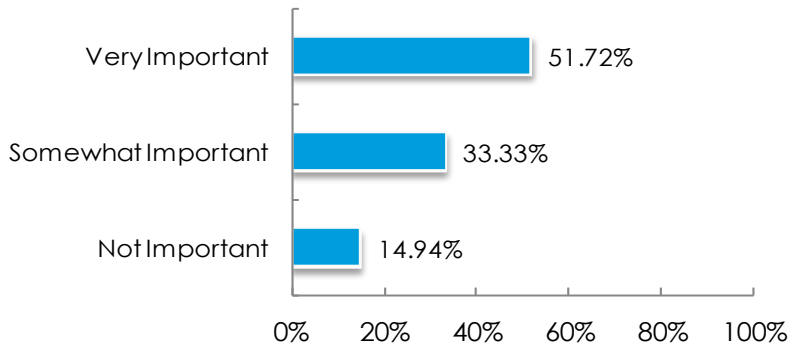
Grants to USA Nonprofits and IHEs to Promote Youth Participation in Recreational Paddling, Grants to Wisconsin Local and Tribal Governments to Develop and Maintain All-Terrain Vehicle Trails (I am personally not interested in this, and am not in favor of ATV trails, but . . .), Grants to USA Nonprofits in the Multiple States for Health, Hunger Relief, Environment, Education, and Community.

13. <http://www.frs.org/rural-community-outreach/grant-program> http://www.americansforthearts.org/sites/default/files/pdf/get_involved/advocacy/RuralDev07.pdf, The Ford Foundation, The Pew Charitable Trusts, The McKnight Foundation, W.K. Kellogg Foundation, Charles Steward Mott Foundation, The John D. and Catherine T. Macarthur Foundation, F.B. Heron Foundation, Citigroup Foundation, local bank foundations, Fannie Mae Foundation, Home Depot Foundation, Dick's Sporting Goods, REI Patagonia, Gates Foundation
14. MARGUERITE LISTEMAN FUND, P.O. Box 803878, Chicago, IL 60680-3878, Independent fdtn, EIN 366028439, BRIDGE #0974369264
15. We would like to help with signs. Bike trail signs, Veteran's park sign and other signs throughout New Glarus. We did the big keg signs at the New Glarus Brewery.
16. Government should pay for it. No new taxes
17. The tax payer.
18. It would be great to see a larger percentage of tax dollars be directed to recreational opportunities. Educating the future of America is of course worthwhile, but we don't all have kids.
19. School funded & private donors
20. Do not build with out giving cost. Items should be voted on.
21. Portion of Festival money sales designated for recreational facilities.
22. "The plan needs to look at school needs, community needs(birth through senior citizen) and guest, membership revenue potential. Revenue can come from multiple sources some sponsorship, some private(user fees) and some tax based."
23. As I stated earlier we must be very careful how tax monies are spent. Schools are the most important and than maintaining our infrastructure are the most important in our township. If there are people out there that want additional recreational facilities let them pay for it.
24. One time funding should come from grants and fundraising and the maintenance (operational) should be built into the municipalities (Town and Village) budgets.
25. The town and village might consider becoming one municipality
26. Trail pass for trails.
27. self payment/donation user fee boxes
28. I think the Town should partner with the Village for paying for development and maintenance of the facilities that support local programming. Fees for the kids/adults to use the programs could then be equal. I'm ok with using either development impact fees or a tax referendum to support construction.
29. losing the trees along the bike trail and river have made those paths far less enjoyable. I miss the shade and the wildlife. While the Township may have very little to do with their removal I hope that any plans for outdoor activities include foliage.
30. I would suggest a usage fee for the bike trails, just like the one that is already in place on all the bike trails in the area.
31. User fees, not property tax.
32. User Fees

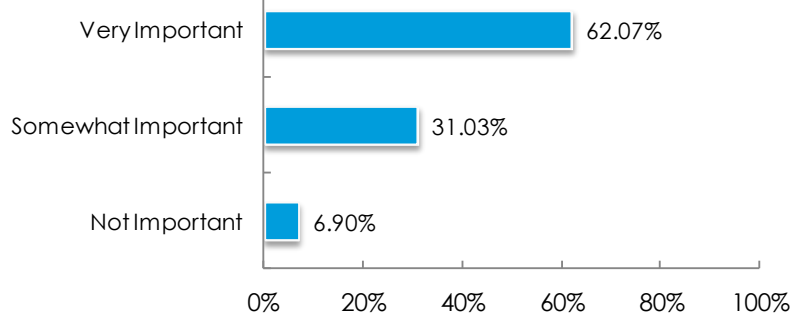
COMMUNITY SURVEY RESULTS

The Parks Commission works to obtain property easements in order to link existing recreational trails with parks, neighborhoods, and state trails. How important do you consider these efforts?

Importance: Obtaining Property Easements



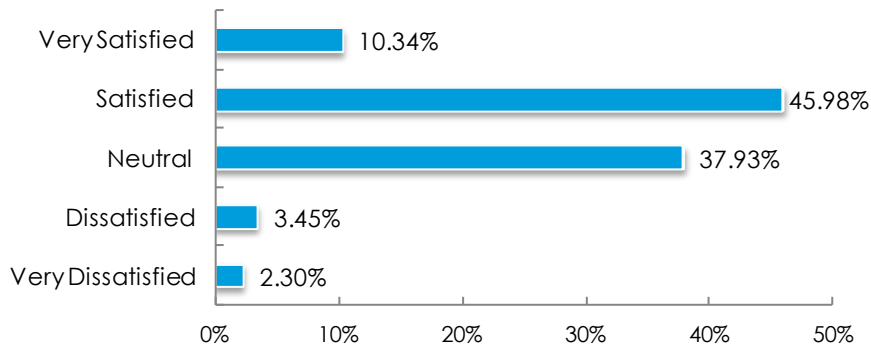
Importance: Open Space, Native Plants, Wildlife Protection, Natural Resource Conservation



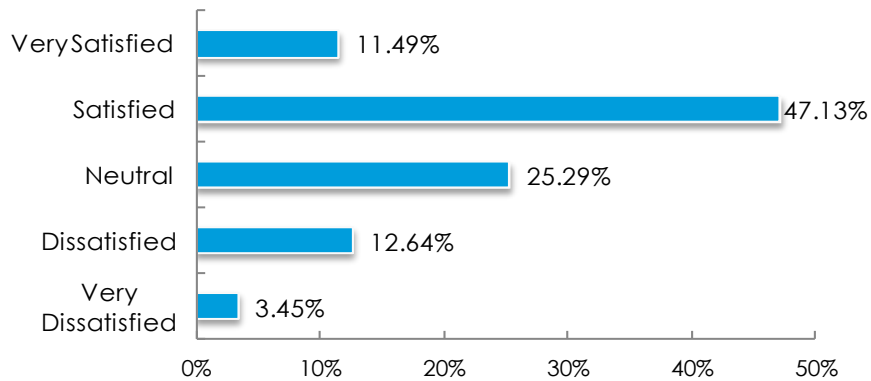
COMMUNITY SURVEY RESULTS

Please indicate your overall satisfaction with each of these components of the Town and Village parks and recreation system:

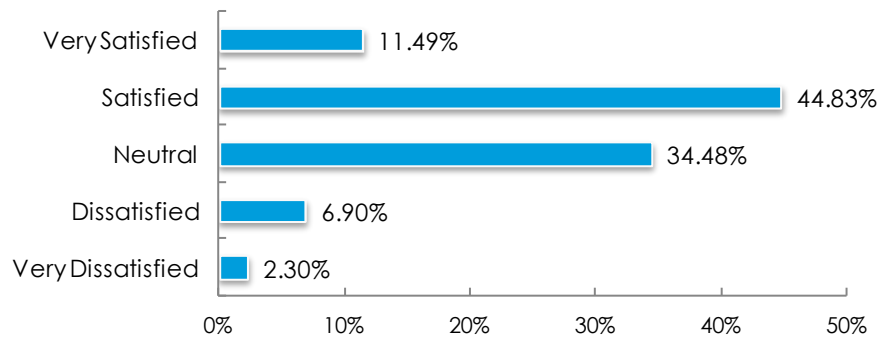
Satisfaction: Conservancies



Satisfaction: Trails



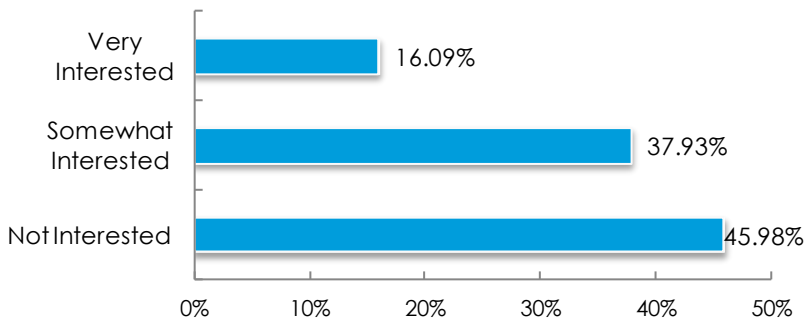
Satisfaction: Parks



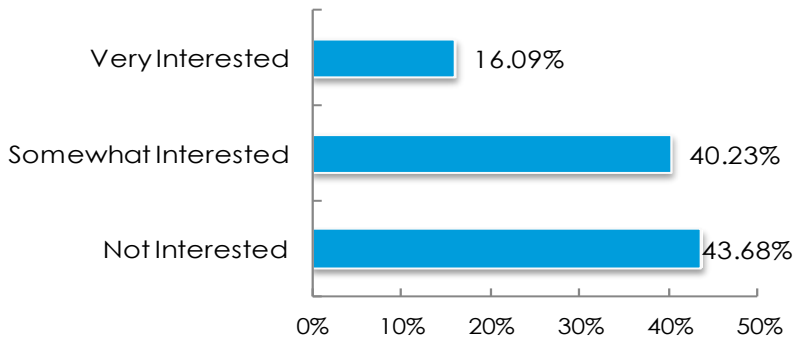
COMMUNITY SURVEY RESULTS

Are you interested in volunteering to assist with any of the following Town activities and/or joint Town/Village activities? If yes, please indicate your interest level in the question below.

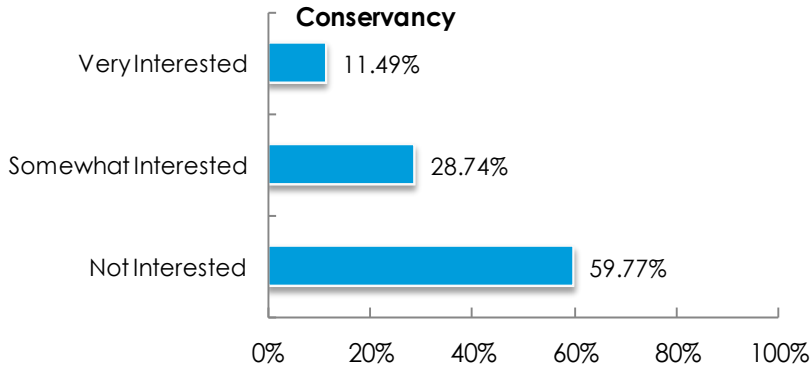
Interest: Annual Spring Cleanup of Roadsides



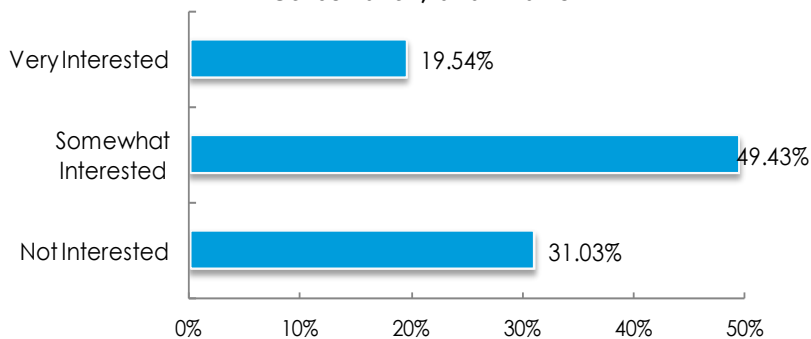
Interest: Parks



Interest: Annual Cleanup of Bluebird Ridge Conservancy



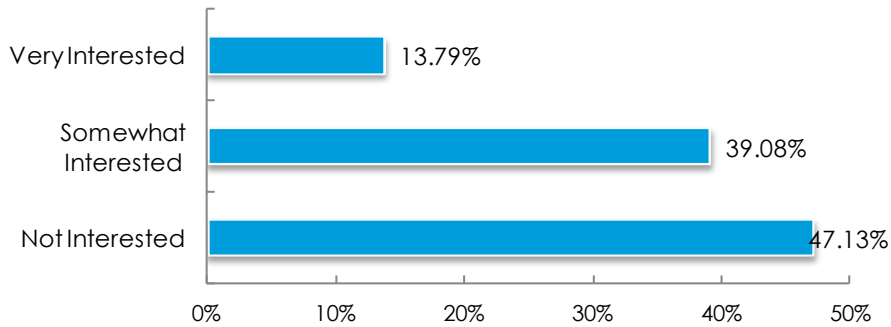
Interest: Attendance at Workshops on Local History, Conservation, and Wildlife



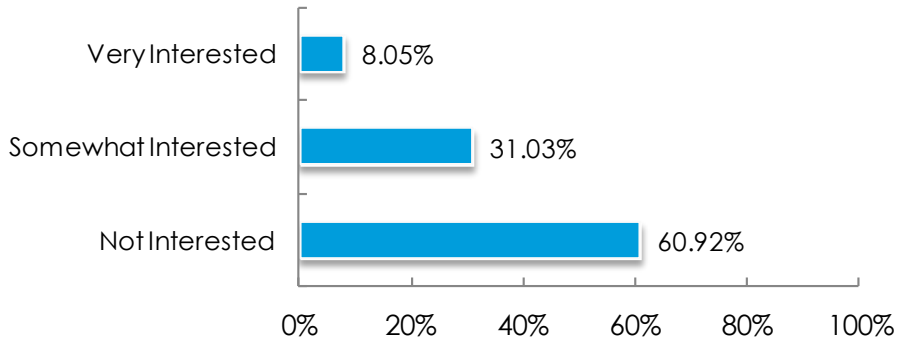
COMMUNITY SURVEY RESULTS

Are you interested in volunteering to assist with any of the following Town activities and/or joint Town/Village activities? If yes, please indicate your interest level in the question below.

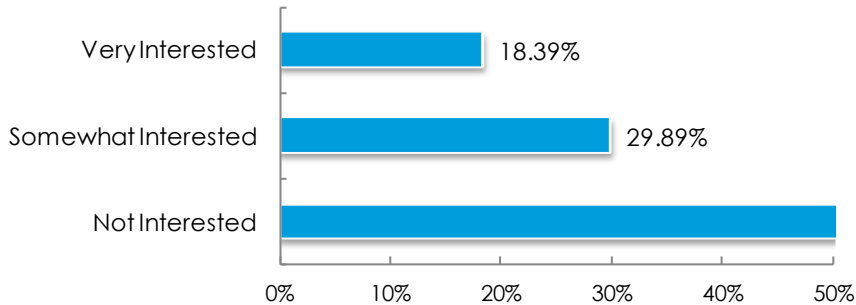
Interest: Annual Arbor Day Tree Planting



Interest: Annual Alphornman Triathlon



Interest: Annual Town Park Tree Sales





APPENDIX B - FEE RESOLUTION

**VILLAGE OF NEW GLARUS
RESOLUTION 16-05**

**RESOLUTION TO ESTABLISH 2016 SCHEDULE OF FEES FOR USE OF NEW GLARUS
VILLAGE PARKS AND SWIMMING POOL**

THE VILLAGE BOARD of the VILLAGE OF NEW GLARUS, GREEN COUNTY, WISCONSIN does hereby establish the following fee schedule:

[All pool / recreation programs purchased by April 30, 2016 will receive a 5% discount]
[1/2 price passes will be available starting August 1st]

POOL PROGRAMS

SEASON PASS	RESIDENT	NON-RESIDENT
Family (2-4)	\$95.00	\$165.00
Each Add'l Family Member	\$11.00	\$15.00
Single	\$50.00	\$85.00
Child – 4 and under	\$20.00	\$25.00
Daycare Provider	\$15.00	\$15.00

DAILY PASS	RESIDENT	NON-RESIDENT
Adult	\$3.00	\$5.00
Child	\$2.00	\$3.00
Shower Only	\$2.00	\$3.00

SWIMMING LESSONS	WITH PASS	WITHOUT PASS
Preschool – Level 6	\$20.00	\$45.00

SWIM RECREATION PROGRAMS	RESIDENT	NON-RESIDENT
Splash-Splash	\$25.00	\$30.00
Adult Water Aerobics	\$45.00 / \$3.00 Session	\$50.00 / \$4.00 Session
Early Bird Lap Swim	\$45.00 / \$3.00 Session	\$50.00 / \$4.00 Session
Swim Team	\$60.00 / Village Portion	

2 Hours / \$100.00*

Birthday Bubbles *Staff is authorized to increase fee should additional guards be required due to number of attendees.

PARK / RECREATION PROGRAMS

	RESIDENT	NON-RESIDENT
Baseball (3-8 Grade)	\$55.00	\$65.00
Softball (2-8 Grade)	\$55.00	\$65.00
Minor League Baseball/Softball	\$25.00	\$30.00
Major League Baseball/Softball	\$25.00	\$30.00
Touchdown Club	\$25.00	\$30.00
Ride and Slide	\$25.00	\$30.00
Park Reservation Fee	\$25.00	\$35.00
Men's Softball	\$150.00 per team	
Coed Kickball	\$150.00 per team	
Coed Sand Volleyball	\$100.00 per team	
Triathlon	Prior to Event	Individual-\$55.00 Team-\$75.00
	Day of Event	Individual-\$65.00 Team-\$90.00
Sport Camps	Daily Park Usage Fee plus Additional Costs	
Sport Leagues (not operated by Village)	\$230.00 per league	
Tournaments (Hosting)	\$75.00 includes concession stand. Plus all other necessary license fees.	

AND DOES FURTHER RESOLVE that all fees shall be paid to the New Glarus Village Treasurer prior to the start of the program.

AND DOES FURTHER RESOLVE that adult shall be defined as an individual having graduated from High School, having completed the equivalent of K-12 education, or 18 years of age;

That family shall be defined as no more than two adults living together and their natural, adopted or foster children whether living with parent or not. If families have a summer daycare provider, they may add that person to their family pass for an additional \$15;

That all season pass fees shall be paid to the New Glarus Village Treasurer before beginning swimming lessons and/or prior to the use of the pool;

Any cancellation made after the registration deadline is subject to a \$5.00 surcharge. No refunds will be given after the first session or practice has taken place, other than in the case of a severe illness or injury that prevents participation. Full refunds will be given for all programs cancelled by the Village. Refunds will be made by check and mailed to the address provided on the registration. Group discounts information can be obtained at the Village Offices.

DATE PRESENTED: 2/16/16
ADOPTED: 2/16/16

Roger Truttmann, President

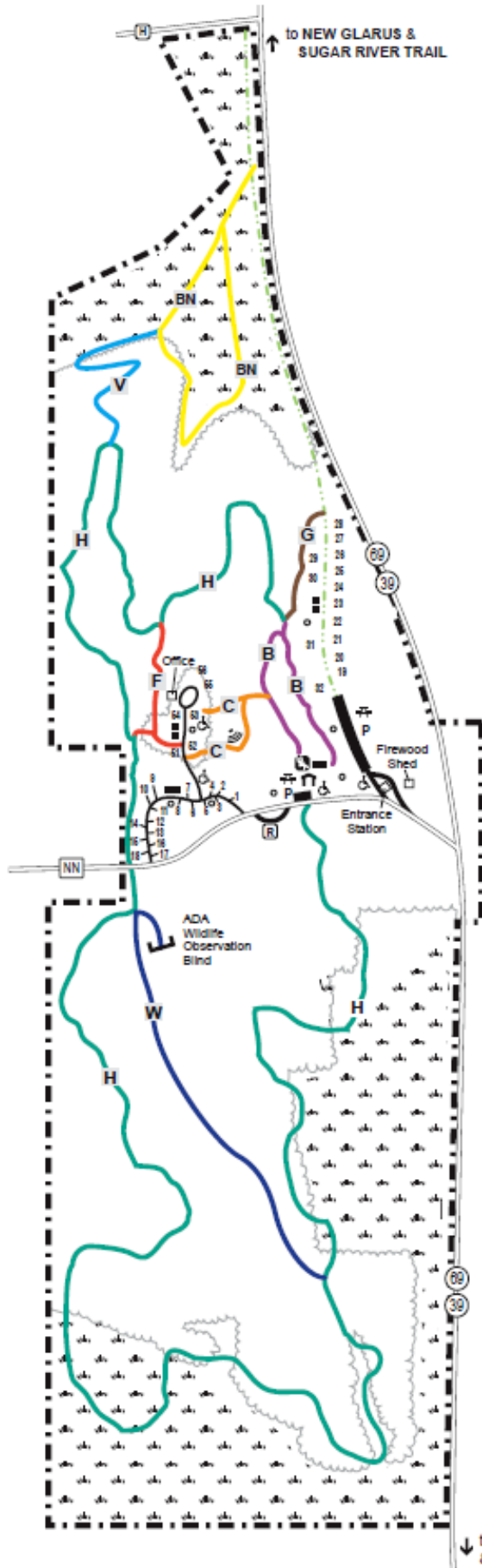
Lynne R. Erb, Clerk



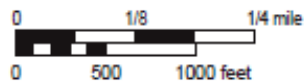
APPENDIX C - NEW GLARUS WOODS STATE PARK

New Glarus Woods State Park

W5508 Cty Hwy NN
 New Glarus, Wisconsin 53574
 (608) 527-2335
 LAT: N42.7870, LONG: W089.6295



- ▬▬▬▬ Park Boundary
 - P Parking
 - 🏠 Shelter
 - 🍴 Picnic Area
 - 🚻 Toilet Buildings
 - ⦿ Water Fountain
 - ♻️ Recycling Station
 - 🎤 Chattermark Amphitheater
 - ♿ Accessible
 - 🎡 Playground
-
- Campgrounds
 - Accessible Campsites: 4, 53
 - Drive-in Campsites: 1-18
 - Walk-to Campsites: 19-32
 - Group Campsites: 51-56
-
- You Are Here
- Trails
- B Basswood Nature Trail - 0.4 miles
 - BN Bison Nature Trail - 0.8 miles
 - C Chattermark Trail - 0.1 miles
 - F Fox Trail - 0.2 miles
 - G Great Oak Trail - 0.2 miles
 - H Havenridge Nature Trail - 4.2 miles (Guidebook Available)
 - V Vista Trail - 0.4 miles
 - W Walnut Trail - 0.5 miles
 - Sugar River Trail Spur - 1.6 miles
-
- 🌳 Prairie Habitat
 - 🌲 Woods



↓ to MONTICELLO & MONROE

The Results Are In!

The Town of New Glarus Comprehensive Outdoor Recreation Plan Community Survey is now complete. Over 100 respondents weighed in on how they would like their hard-earned tax dollars to be spent to improve or expand recreational facilities and services in the Town.

100 is a decent number (there are 540 households in the Town), and the feedback was superb. As promised, all those who completed the survey were entered into a drawing to receive one of three New Glarus Chamber Bucks \$100 gift certificates. The winners--Robin Rupnow, Christina Bleifuss, and B.J. Wolfe, should soon receive their checks. Thanks to these folks and to everyone who took the time to fill out the survey, for your input!

Most of the people who completed the survey said that they would like to have **Adult Recreational Programs, an Indoor Community Recreation Center, Trails That Connect the Town to the Village, or Pickleball Courts**. These recommendations will be at the top of the agenda for our **Community Meeting** from 7:00-8:00 p.m. on Wednesday, July 20, 2022, in the New Glarus Town Hall, 26 5th Ave, New Glarus, WI 53574.

We hope to see you there!