

# TOWN OF NEW GLARUS

## PARKS COMMISSION MEETING 17 AUGUST 2022, 6:00 PM AGENDA

NOTICE IS HEREBY GIVEN that Town of New Glarus Parks Commission, County of Green, will conduct a meeting for the transaction of business as is by law required permitted at such meeting as follows:

LOCATION: New Glarus Town Hall  
26 5<sup>th</sup> Avenue  
New Glarus, WI 53574

Note: Due to COVID-19 protocols, Town of New Glarus Parks Commission meetings will continue to have a virtual option.

Zoom Link: <https://us06web.zoom.us/j/88385686230?pwd=T3ErZVpueFcyRnAyanFKcUZiMEhCQT09>

Meeting ID: 883 8568 6230    Passcode: 436898    Dial by your location: +1 312 626 6799 US (Chicago)

### AGENDA:

1. Call to Order
2. Proof of Posting
3. Approve Minutes
  - a) July 20, 2022 meeting minutes
  - b) July 20, 2022 workshop minutes
4. Public Comments
5. Discuss Prairie Workshop – Dana
6. Discuss Seeding of Prairie Plants at Blue Bird Ridge Conservancy after Fall Burn – Dana
7. Continue Discussion of Seeding 7.9 Acres of Town-Owned Land Along Durst Road with Pollinator Mix – Chris
8. Continue Discussion of Controlled Burn/Invasive Species Workshop and Possible Locations – Jason
9. Continue Discussion of 2-4 PM, April 8, 2023, River Tripping Workshop – Mona Sue
10. Discuss Updated Comprehensive Outdoor Recreation Plan (CORP)
  - a) Page 10, goal 2, #4
  - b) Revisions to map of potential trails
  - c) Traffic delineator posts
  - d) Potential for Town's purchase of tennis courts
  - e) Recommendation that the Town adopt an ordinance requiring trail easements when land divisions are considered
11. Correspondence with Green County Clerk Arianna Voegeli Regarding a Possible County Park
12. Schedule Next Meeting September 21, 2022
13. Adjourn

POSTED: 8/11/2022

New Glarus Town Hall  
New Glarus Garage  
New Glarus Post Office

<https://townofnewglarus.com/>

Harry Pulliam, Chair  
New Glarus Parks Commission

John Wright, Clerk-Treasurer

Pursuant to applicable law, notice is hereby given that a quorum or a majority of the New Glarus Town Board or Plan Commission Members may attend this meeting. Information presented at this meeting may help form the rationale behind future actions that may be taken by the Town of New Glarus Board. Persons requiring additional services to participate in a public meeting may contact the Town Clerk for assistance at 527-2390.

## PARKS COMMISSION MEETING

Wednesday, July 20, 2022

Minutes

**Attending:** Chair Harry Pulliam, Kelly Ruschman, Mark Pernitz, Mona Sue French, Dana Emmerton (virtually), and Chris Narveson (arrived at 6:05 PM)

**Absent:** Jason Neton (excused)

**Also Attending:** Matt Streiff, Brian Aebly, and Jim Hoesly: residents

1. **Call to Order:** Meeting was called to order by Chair Pulliam at 6:00 PM. The Zoom recording was stopped and restarted around 6:15 PM when those attending virtually could not access the video and audio.
2. **Proof of Posting:** Clerk-Treasurer Wright attested to proper proof of posting.
3. **Approve June 15, 2022, Parks Commission Minutes:** A motion to approve the minutes was made by Commissioner Ruschman; second by Commissioner French. Motion carried.
4. **Public Comments:** none.
5. **Update on Donation Proceeds from Tree Sale to Scouts:** Chair Pulliam instructed the Clerk-Treasurer to distribute tree sale profits of \$245.79 to Jon Byrd, the current scoutmaster for Boy Scout Troop 106. This will be presented to the Town Board for their approval at the August 10, 2022 meeting, without objection.
6. **Discuss Results of Comprehensive Outdoor Recreation Plan (CORP) Survey:** Chair Pulliam reviewed those programs supported by the respondents of the survey: adult recreation programs, an indoor recreation complex, connecting trails, and pickle ball courts. There followed a brief discussion regarding the history of the tennis courts, which were once maintained by the Village of New Glarus within Veteran's Park and subsequently sold to the New Glarus School District. Rehabilitation of the courts was discussed as well as entertaining the possibility for the Town to take ownership. The group reviewed the results of the survey including pie charts. It was noted that a majority of the respondents are older. If demographic information for the Town is available, the Parks Commission members expressed interest to review that data. It was noted that the greatest opposition expressed in the survey was to trails connecting with the Village, mountain bike trails, and school-year recreational programs.

There followed a brief discussion of past attempts for a seasonal ice-skating rink and possibly supporting a cooperative venture in the future that includes the Town, Village, Chamber, and area businesses. Resident Brian Aebly thought the survey would have been improved if it included a follow-up question for those in support of connecting trails as to whether they would also be in favor of granting an easement across or beside their own property. Resident Matt Streiff wondered aloud whether the Town should consider the purchase of farmland in the Town if any acreage becomes available.

7. **Discuss Press Release on 2022 CORP Survey Result and CORP Public Meeting:** Chair Pulliam reported that he submitted a press release for publication, but it has yet to appear in print. It was noted that Vierbicher Associates representative Katherine Westaby will join this evening's workshop virtually around 6:50 PM.

8. **Discuss and Possibly Recommend Review of the CORP by the Town Board and Town Plan Commission that Includes Changes Recommended at the July 20, 2022 Workshop as Incorporated by Vierbicher Associates:** A motion to recommend review of the updated CORP by the Town Board and Town Plan Commission at their August meetings was made by Commissioner French; second by Commissioner Ruschman. Motion carried. Chair Pulliam recommended for Commission members to attend the Town Board (August 10) and Plan Commission (August 18) meetings to answer any questions that might arise; without objection. It is probable that the Town Board will act to schedule a public hearing date in October at their September regular meeting.
9. **Schedule Next Meeting** – the next meeting will be held on August 17, 2022 at 6:00 PM. The next agenda should include discussion of updates to the CORP based upon the July 20, 2022 workshop discussion, Town Board feedback on the updated CORP, discuss interest in a county park, and review of demographic data, if it is available.
10. **Adjourn:** A motion to adjourn made by Commissioner Ruschman; second by Commissioner Narveson at 6:59 PM.

Approved:

---

Minutes by Clerk/Treasurer Wright

## PARKS COMMISSION WORKSHOP

Wednesday, July 20, 2022

Minutes

**Attending:** Chair Harry Pulliam, Kelly Ruschman, Mark Pernitz, Mona Sue French, Dana Emmerton (virtually), and Chris Narveson

**Absent:** Jason Neton (excused)

**Also Attending:** Matt Streiff, Brian Aebly, Jim Hoesly, Michele Brewer and Todd Brewer (arrived at 7:04 PM): residents; and Katherine Westaby (departed 7:55 PM): Vierbicher planning staff

1. **Call to Order:** The workshop was called to order by Chair Pulliam at 7:00 PM.
2. **Presentation of the Final Comprehensive Outdoor Recreation Plan Update for 2022**
  - a. Goals – Urban planning staff member Katherine Westaby, Vierbicher Associates, introduced herself. She provided those in attendance with the purpose of recreational resources within the community including its economic benefits.
  - b. Objectives – Westaby used the existing Plan and accomplishments as a point of reference to introduce proposed updates based upon the community survey results and recommendations from those in attendance this evening.
  - c. Summary of results – Westaby reviewed highlights from the community survey conducted in early 2017 before reviewing the results of this year’s community survey. It was noted that responses from residents outside the Town of New Glarus were not part of the summary reviewed this evening and will not be included in the updated Plan.
  - d. **Workshop Activities to Solicit Public Input** – Resident Michele Brewer stated that she was opposed to exercising eminent domain to extend connecting trails and the potential negative impact to area farmers if trails divide property they farm or use for field access. It was noted that the survey does, in part, create a “wish list” expressed by area residents, but the Plan determines priorities based upon these responses and a method to implement those most likely to garner support and funding beyond property taxes (e.g., grants, donations, impact fees, bequests, etc.).

There followed a discussion regarding the map used to identify and prioritize connecting trails between the Town and Village of New Glarus and the unintended consequences of including specific locations and ranking their importance. Some support was expressed for widening County Road O to include a bike lane rather than a separate trail along that corridor. It was noted that whichever option is chosen, maintenance needs to be considered as an ongoing expense and an added responsibility for public works staff. It was noted that support of connecting trails to safely move school-aged children from subdivisions to the east of STH 69 in the Town to area schools in the Village made more sense in the past; however, this may not be as viable an option now.

There was concern expressed that a current prohibition on motorized vehicle use on trails supported by DNR grant money may be lifted at a future date, which could negatively impact properties adjacent to proposed and existing trails. Westaby introduced a Goals and Objectives worksheet for each attendee to complete and return within the next few days to be incorporated into the updated Plan.

3. **Discuss the Timeline to Incorporate Changes and Present to the Town Board for Adoption** – action was taken at the regular meeting that preceded this workshop to recommend review and discussion of the updated Plan by the Town Board at their August 10, 2022 meeting and the Town Plan Commission at their August 18, 2022 meeting. Any changes recommended by those bodies will be incorporated into the updated Plan. This update will be presented to the Board at their September 14, 2022 meeting with a request for the Board to schedule a public hearing preceding action to approve the Plan on October 12, 2022.
4. **Adjourn:** A motion to adjourn made by M. Pernitz; second by M. Brewer at 7:58 PM.

Approved:

---

Minutes by Clerk/Treasurer Wright

DRAFT

# COMPREHENSIVE OUTDOOR RECREATION PLAN

Town of New Glarus 2022-2027 update



vierbicher  
planners | engineers | advisors





# ACKNOWLEDGEMENTS

We would like to thank the Parks Commission, the Plan Commission, the Town Board and Town Staff for their role in this Plan Process.

## Town Board

Chris Narveson, Chairman  
Matt Streiff  
Troy Pauli  
Jim Hoesly  
Robert Elkins

## Parks Commission

Harry Pulliam, Chairperson  
Chris Narveson  
Mona Sue French  
Dana Emmerton  
Jason Neton  
Mark Pernitz  
Kelly Ruschman

## Plan Commission

Chris Nareveson, Chairperson  
Robert Elkins  
John Freitag  
Craig Galhouse  
John Ott  
Reg Reis  
Mark Pernitz

## Town Staff

John Wright, Deputy Clerk-Treasurer  
Ron Roesslein, Town Patrolperson

Comprehensive Outdoor Recreation Plan  
prepared by:

Vierbicher  
999 Fourier Drive Ste. 201  
Madison, WI 53717  
608.826.0532  
[www.vierbicher.com](http://www.vierbicher.com)

Plan Adopted by Town Board on **Month XX, 2022**

©2022 Vierbicher



# CONTENTS

<b>Introduction</b>	<b>1</b>
<b>Existing Conditions</b>	<b>7</b>
<b>Recommendations</b>	<b>15</b>
<b>Appendices</b>	<b>20</b>
Appendix A – Community Survey Results	
Appendix B – Fee Resolution	
Appendix C – New Glarus Woods State Park	
Appendix D – Workshop Information	
Appendix E – Stream (Fishing) Map	

## Figures

Figure 1: Raptor Workshop	3
Figure 2: Town of New Glarus Population Trends	7
Figure 3: Town of New Glarus Population Pyramid, 2020	7
Figure 4: Village of New Glarus Future Land Use Map	8
Figure 5: Available Outdoor Recreation Opportunities	9
Figure 6: Green County On-road Bicycle Map	10
Figure 7: Population Density	12
Figure 8: Survey Results – Natural Surface Recreation Trails	14
Figure 9: Survey Results – Paved hiking/biking along roadway	14
Figure 10: Survey Results – Trails that connect the Town to the Village	14
Figure 11: Town of New Glarus Potential Future Trails	17

## Tables

Table 1: Classification of Town of New Glarus Acreage	7
Table 2: Sample Recreation and Open Space Standards	11
Table 3: Potential Future Trails Information	19



## INTRODUCTION

# INTRODUCTION

## Purpose

Parks, recreation, trails, and open space are essential elements in the quality of life for all communities. Increased demand for recreational opportunities, including outdoor recreation, has led to increased pressure on existing recreational facilities. To meet this demand the community is expected to provide additional facilities or improvements that offer residents a wide range of quality recreational opportunities.

Therefore every five years, The Town of New Glarus updates their Comprehensive Outdoor Recreation Plan (CORP) as a tool for the community and to stay eligible for matching government funds for parkland and recreation improvements under Wisconsin Department of Natural Resources requirements.

The Town of New Glarus CORP is an expression of the community's goals and objectives for current and future needs for trails, parks, and open space. The intent of this document is to guide the continual improvement of the Town's trails, parks, and open space for local residents and visitors. The Parks Commission and Town Board shall make policy decisions for trails, parks, and open space based on this adopted plan. Actual implementation is contingent on funding sources, new opportunities, budget priorities and changing community needs and desires.

## Statewide Comprehensive Outdoor Recreation Plan

The state is currently updating their 2017 – 2022 Wisconsin Statewide Comprehensive Outdoor Recreation Plan (SCORP). The primary actions for the 2017 – 2022 SCORP include collecting data on outdoor recreation preferences of Wisconsin citizens, updating data on the supply of outdoor recreation opportunities, with a focus on properties open to the public for nature-based outdoor recreation, and developing priorities for future recreation funding.

*At its core, the SCORP is used to help allocate federal funds equitable among local communities, but the document also transcends many levels of outdoor recreation discussion and policy. – Wisconsin SCORP*

## Role of Parks, Recreation, and Trails

Parks, recreation, and trails shape community image, public health, and bring economic opportunity. Recreational opportunities provide individuals the possibility to socialize with other people. Open space also provides places for individuals to recharge mentally.

## Tourism and Economic Impact

Trails and Greenways positively impact individuals and improve communities by providing not only recreation and transportation opportunities but also influencing economic and community development. Many of these benefits include:

- Making communities better places to live by preserving and creating open spaces.
- Encouraging physical fitness and healthy lifestyles.
- Creating new opportunities for outdoor recreation and non-motorized transportation.
- Strengthening local economies.
- Protecting the environment.
- Preserving culturally and historically valuable areas.

Various Studies demonstrate that parks and trails increase nearby property values and nearby businesses. Connecting residents and visitors to parks and recreational facilities and community facilities is important to encourage safe, alternative modes of transportation. The Town wishes to connect to the Village of New Glarus, nearby communities, and regional trails. This allows for residents to travel safely to locations outside the Town of New Glarus and invites visitors into the Town. Dedicated bicycle and pedestrian trails improve the comfort of users, open new travel options, reduce automobile traffic, increase

recreation and exercise and help create more livable communities.

One such study observed the economic impacts of the Wisconsin State Park system<sup>1</sup>. This study reviewed the mechanisms that link state parks and trails to local economic impacts. Research questions included: "To what extent do differing visitor types spend their trip dollars in the local region around these sites?" and "How do visitors to state parks and trails contribute to local job creation and income generation within gateway communities across the state?" The study found that outdoor recreation on public lands serves as a key motivator for tourism. Researchers analyzed trip-related expenditures and excluded non-trip related spending. According to the study, visits to New Glarus Woods State Park had total visitor expenditures of \$3,268,698 with \$1,372,466 from local visits and \$1,896,232 from non-local visits.

## Summary of Previous Plans

The previous Town of New Glarus CORP was completed in 2011 by the Town Parks Commission. This plan focused on trail identification, conservation, provision of educational workshops, and collaboration with the Village of New Glarus on various recreation opportunities. Specifically, the 2011 plan identified the continuing restoration efforts of the Bluebird Ridge Conservancy and acquiring Town land for a community park with a potential Town Hall site. As noted in the accomplishments section, the Town successfully continues restoration efforts and has built a Town Hall. The Town completed a whole new plan in 2017. This 2022 update provides an update to the goals and objectives, accomplishments, data, survey, and recommendations.

## Town Parks Commission

The Town Parks Commission formed in 2004 to improve and maintain parks in the Town. The Town approved the first CORP in 2006, with an update in 2011. The Parks Commission seeks to balance

spending its limited dollars between long-term and immediate needs of the community. The Town and the Village formed a joint Town/Village Committee in 2009 to pursue goals mutually beneficial to both communities. The joint committee meets quarterly with the location rotating between the Town and Village.

The Parks Commission has held numerous workshops focused on objectives from the 2011 CORP. The Town is dedicated to preserving and protecting the natural environment and formalizing partnerships in the process. The following section lists the accomplishments and workshops completed since 2011. See appendix for additional workshops held.

## Accomplishments

### 2017 Plan

- Sponsored Bee Club.
- Identified lands available for acquisition for future recreational use.
- Marked conservancy areas with proper signage and list on a Parks Master Plan map.
- Posted signage at Blue Bird Ridge Conservancy.
- Identified naturalist and environmental groups that help with preservation and provide grant money to assist residents.
- Identified grants for recreational use.
- Consulted with the Green County Forester regarding the creation of a Town Tree Planting Program for interested property owners.
- Held annual Tree Sales and contributed yearly to the Arbor Day Project.
- Educate Town residents on measures they can take to preserve their own property and foster proper environmental practices.
- Shared funding or improvements for facilities such as the ice skating rink.
- Acquired and renovated a new Town Hall.

### 2022 Plan

- Established paved bike / walking lanes alongside Durst and Valley View Roads.
- Continued native plant and prairie restoration

---

<sup>1</sup> Economic Impact Study

<https://urpl.wisc.edu/sites/urpl.wisc.edu/files/people/marcouiller/13EISPfinal.pdf>

at Bluebird Ridge Conservancy.

- Held annual tree sales, donating proceeds to the Boy Scouts, 2017-2022.
- Promoted well water testing programs in 2017 and 2021.
- Hosted Sugar River Beekeepers monthly meetings in 2018 and 2019.
- Organized and supported photo contests in 2018, 2019, and 2020 to highlight rural scenes in the Town of New Glarus.
- Helped fund renovations to the ball field at Glarner Park in 2021.
- Held a highly successful electronics recycling event in 2022.

### Workshops\*

- 2007-2010 - Parks Commission Workshops
- 2011 - Raptor Workshop
- 2012 - Barn Renovation Part 1
- 2013 - Tree and Barn Renovation Part 2
- 2014 - Tree and Bird and Conserving
- 2015 - Tree and Bee
- 2016 - Tree and Bat
- 2017 - Tree in May and Water in August
- 2017 - Well water test results workshop
- 2017 & 2019 - Birdhouse building workshops
- 2018 - Community-Supported Agriculture workshop
- 2018 & 2019 - Beekeeping Basics workshops
- 2019 Invasive Plants workshop
- 2020 Beekeeping Basics Workshop
- 2020 River Tripping Workshop (twice)

\*Detailed List of the Workshops are included as Appendix D.

Figure 1: Raptor Workshop



### Planning Process

Recreation and trail planning are essential components of long-range community planning in the Town of New Glarus. The Town of New Glarus contracted with Vierbicher to complete the 2022 update. Vierbicher and the CORP committee facilitated public meetings and an online survey (see Appendix A) to gather citizen feedback on future priorities for the next five years. The process involved two public engagement meetings—one at the beginning of the process and one after the draft goals and objectives were created. A public hearing was held prior to plan adoption. This plan was developed following the guidelines for Development of Local Comprehensive Outdoor Recreation Plans created by the Wisconsin Department of Natural Resources.

### Plan Process Timeline

#### March 2022

- Kick-off Meeting
- Parks Commission Survey Development
- Future Trail and Park Discussion

#### April 2022

- Community Survey distributed

#### June 2022

- Parks Commission Review of draft survey results

#### July 2022

- Public Open House at Parks Commission

#### August 2022

- Review draft Plan
- Review draft Plan at Parks Commission and Plan Commission

#### October 2022

- Public Hearing
- Town Board Approval

## **Amending the Plan**

Plan amendments are common and should be considered part of the planning process. Amendments frequently represent good implementation or plan usage and should be acceptable for consideration by local decision makers. The Parks Commission does not have to wait five years before amending the CORP. Amendments must follow the same process as when the original plan was prepared. Amendments generally prolong the effectiveness of the original plan.

There should be opportunity for public input in the planning process with a full and open discussion of the need for the amendment by the Parks Commission, a draft amendment that is reviewed and acted on by the Parks Commission at an official public meeting, a referral to the Town Board, a public hearing held by the Parks Commission or Town Board, and finally, the adoption of the plan amendment by the board.

## Plan Goals and Objectives

The Parks Commission developed five main goals to guide the future growth and development of the Town. One of the most important roles of local government is its responsibility to provide open space, parks and recreation facilities and programs for public use.

### **Goal 1: Provide active and passive recreational lands to meet current and future recreational needs of the community and visitors.**

1. Respond to community requests for provision of recreational resources.
2. Respond to future needs as they are identified.
3. Obtain additional lands for a community park based on demand by increasing populations, or the environmental and recreational significance of the land.

### **Goal 2: Provide safe and efficient pedestrian and bicycle access between residential neighborhoods, schools, the Village, and other recreational activities.**

1. Refer to this plan in review of development proposals.
2. Develop a trail system throughout the Town to link schools, state parks, and the Sugar River Trail.
3. Link subdivision areas to the Village by pedestrian/bike trails.
4. Create a European-style cross country trail/walking path complete with benches that invite and encourage Town and Village residents and visitors to enjoy the local beauty while walking.

### **Goal 3: Preserve and enhance environmental corridors.**

1. Identify and conserve areas of particular interest, unique plant or animal life, scenic views, environmentally sensitive areas, or native natural areas.
2. Identify lands available to obtain if the potential exists for future recreational use.
3. Use park and recreational lands as a means to promote environmental education and community history.
4. Continue the Town Tree Planting Program.

5. Educate Town residents on measures they can take to preserve their own property and foster proper environmental practices.

### **Goal 4: Coordinate Park and recreation planning and development.**

1. Identify and conserve areas of particular interest, unique plant or animal life, scenic views, environmentally sensitive areas, and native natural areas.
2. Coordinate park and open space planning and development with adjacent governments, school districts, Green County, state and federal agencies, and other owners of public and private open space in the community.
3. Continue to ensure the availability of recreational activities for the enjoyment and benefit of all Town residents in partnership with the Village of New Glarus and New Glarus School District.
4. Preserve areas planned for future parks and recreational trails from development.
5. Complete regular reviews and updates of this plan with the Town Comprehensive Plan.
6. Provide opportunities for public participation in park and recreational facility development.
7. Encourage volunteers to participate in park programming.
8. Provide electronic communications to our community.

### **Goal 5: Continue education and awareness programs.**

1. Continue to provide workshops for the community.
2. Educate the general public on needs and improvements for the parks and trails system.
3. Integrate historical and cultural resources into bicycle and pedestrian facilities.
4. Provide education of and facilitate well testing.





**EXISTING CONDITIONS**

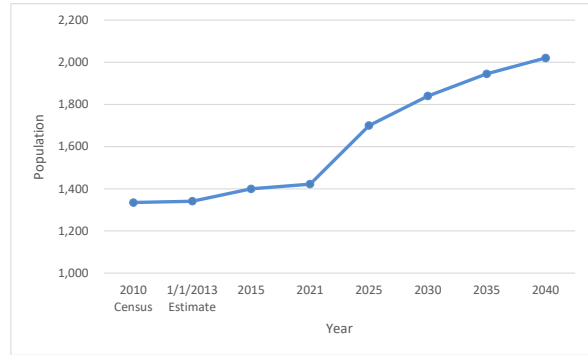
# EXISTING CONDITIONS

## About the Town of New Glarus

The Town of New Glarus is a picturesque community in Green County, Wisconsin that was originally founded in 1845 by Swiss settlers. According to the Wisconsin Department of Administration, the Town has a population of 1,421 (2021) with an expected population of 2,020 by the year 2040, a 42 percent increase (Figure 2). Figure 3 is a population pyramid that shows a snapshot of the Town's population taken from the 2020 American Community Survey (ACS). The age distribution is roughly the same as it was in 2015. While there are not many 20–34-year-olds, there is a spike in the 35 to 54 year old age category and a large percentage of children under the age of 19.

The Town has been continually growing for the past 20 years and will continue to grow. While the Town had many farms, that has changed over the years due to the construction of residential subdivisions. The Town has transitioned from a traditional rural town to a bedroom community populated by commuters residing on small tracts of land. Table 1 illustrates the land use classification. Current land ownership reflects a more complex blend of limited traditional agriculture, non-traditional agriculture, suburban developments, and rural single-family homes on lots ranging in size from two to forty acres.

Figure 2: Town of New Glarus Population Trends



Source: American Community Survey and Wisconsin Department of Administration

## Growth Patterns

Table 1: Classification of Town of New Glarus Acreage

Classification of Town of New Glarus Acreage			
Classification	2010	2016	2021
Residential	1,867	1,928	1,998
Commercial	138	143	105
Agricultural	15,091	14,735	14,555
Undeveloped	907	1,100	1,235
Agricultural Forest	1,475	1,536	1,837
Forest Lands	342	352	519
Managed Forest		874	597
State/County & Other Land		1,613	740

Source: Wisconsin Department of Revenue

Due to its close proximity to Madison the Town is experiencing continuous growth, especially through construction of new residential subdivisions. The Town has transitioned to a bedroom community. The Town must consider the current residents and future residents when planning for park recreation. According to the Village of New Glarus future land use map (figure

4), neighborhoods and industrial areas are planned within the Village's Extraterritorial Jurisdiction of the Town. The Town Parks Commission considered these growth areas when planning for recreation.

Figure 3: Town of New Glarus Population Pyramid, 2015

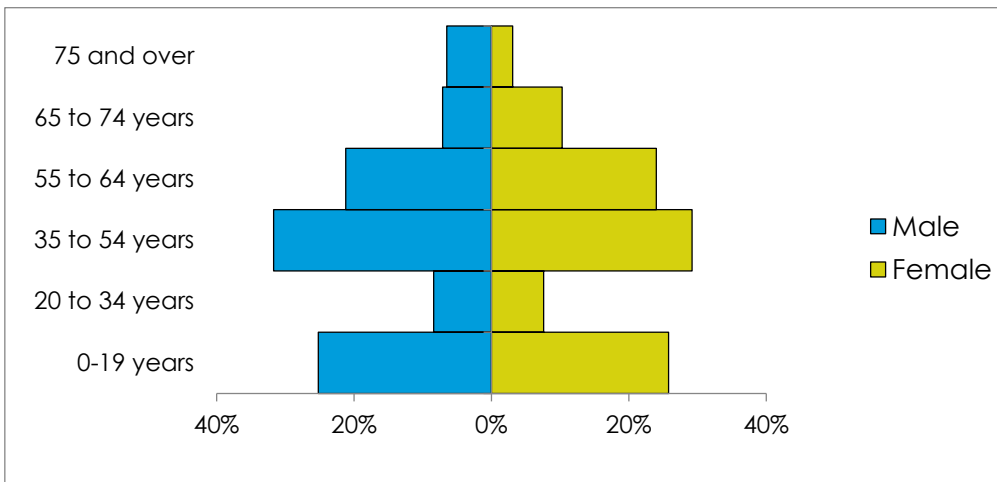
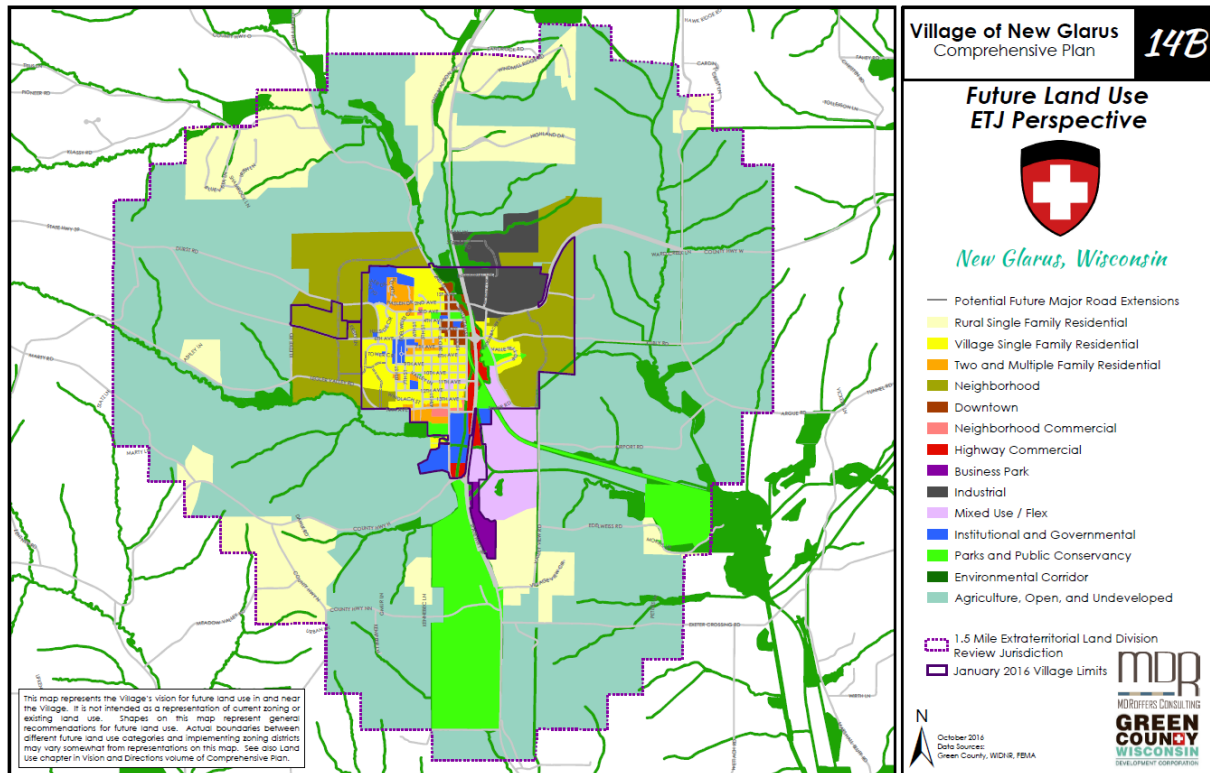


Figure 4: Village of New Glarus Future Land Use Map



Source: Village of New Glarus Comprehensive Plan

## Physical Characteristics of the Region

The Town is located only 26 miles from Madison Wisconsin, the Capital, in Green County. Green County has many recreational amenities such as the Sugar River State Trail, Badger State Trail, New Glarus State Woods and the Albany Wildlife Area. The Sugar River Trail connects New Glarus to Monticello, Albany and finally to Brodhead for a total of 23 miles. The Badger State Trail connects to the Sugar River Trail in Monticello which is only six miles from New Glarus. The Badger State Trail connects to an additional 40 miles between Madison and the Wisconsin – Illinois border. These trail systems connect to larger trail systems in Wisconsin such as the Military Ridge State Trail and the Ice Age National Scenic Trail.

## Topography, Soils, and Water Resources

The Town of New Glarus is located in the Southwestern Wisconsin Driftless Area, a unique geological region that was untouched by the Wisconsin Glacier. This creates a notable contrast with the remainder of the state, where the continental glacier scraped away nearly all the residual soil and left a sheet of transported soil. The Town area's topography creates dramatic

views and is ideal for biking, hiking, sightseeing, skiing and other outdoor activities. There are eight soil associations in Green County which include:

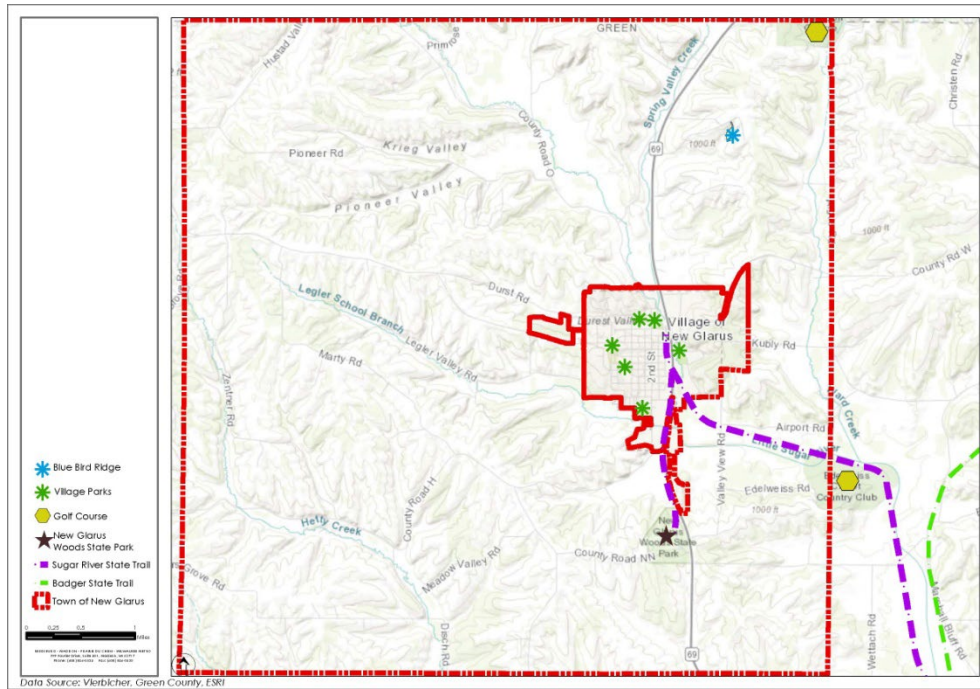
- Dodgeville-Edmund
- New Glarus-Sogn
- Fayette-Tama
- Dunbarton-Whalan
- Hebron-Saylesville
- Orion-Huntsville-Ettrick
- Durand-Myrtle-Rockton
- Dickinson-Meridian

The Town is located in the Little Sugar River watershed and has two waterways running through it: The Little Sugar River and the Legler School Branch.

## Outdoor Recreation Supply

While the Town does not currently have a community park, it does have the Bluebird Ridge Conservancy and access to park facilities and programming through the school district and the Village. Figure 5 illustrates the available outdoor recreation opportunities discussed in the following section.

Figure 5: Available Outdoor Recreation Opportunities



### Bluebird Ridge Conservancy

In the Town of New Glarus, the Bluebird Ridge Conservancy is a 4.29-acre area accessed through a forty foot-wide frontage on Windmill Ridge Road. The Town installed a sign marking the conservancy in spring 2011. A narrow grassy path runs 175 feet off Windmill Ridge Road. At that point, the lot widens to resemble the shape of a diamond. There is a natural oak savannah area in the center with attractive views of the countryside. Major plantings in the conservancy include: White Oak, Black Cherry, Prickly Ash, Sumac, Mulberry, Dogwood, Viburnum, and Buckthorn. Timothy and Brome are the major grass species.

Long-term plans for the conservancy include the

study of oak savannahs and prairies that were native to this area prior to the arrival of European settlers, and development of habitat to support wildlife such as the Eastern Bluebird.

### School District Facilities

The New Glarus School District's parks consist of regulation football/soccer field north of the elementary school, practice fields for football and soccer south of the elementary school, and outdoor basketball courts south of the high school. The park also consists of three tennis courts, which have been resurfaced and are open for public use when they are not in use by the schools.

### Village Facilities

Town residents have the ability to use the Village of New Glarus Parks and Park Shelters. The

Village has five parks that include such amenities as a fishing pond, playground equipment, soccer fields, baseball fields, tennis courts, a sand volleyball court, picnic areas, water fountains, shelters, and a swimming pool. The following is the list of parks in the Village:

- Hoesly Pond
- Candy Cane Park
- Valle Tell Park
- Veteran's Memorial Park
- Village Park
- Glarner Park

Additionally, Town residents have the opportunity to use Village recreational programming.

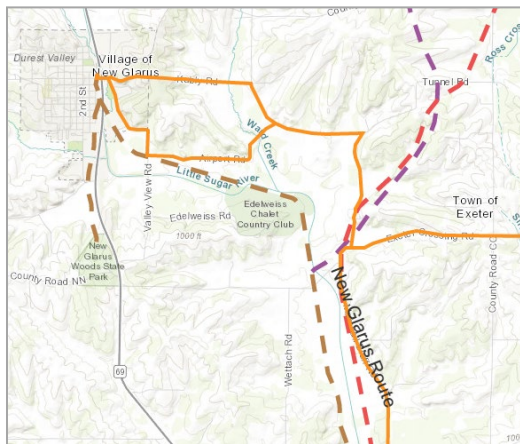
## New Glarus Woods State Park

The New Glarus Woods State Park is located within the Town of New Glarus. The park has approximately 105 acres, 38 campgrounds, eight trails and the Sugar River Trail spur (1.6 miles) that connects to the Village of New Glarus. See Appendix C for the New Glarus Woods State Park.

## Existing Trails

As discussed previously, the Sugar River State Trail passes through the Town of New Glarus and connects to areas outside the Town that include communities in Green County. Additionally, in Monticello the Sugar River State Trail connects to the Badger State Trail, which connects to additional trails in the State of Wisconsin and the State of Illinois. Green County recently developed an on-road rural bike route online map for Green County (figure 6). The route travels along New Glarus city streets, Kubly Road, Airport Road, Valley View Road, Argue Road, Tunnel Road, Marshall Bluff Road, Exeter Crossing Road, County Highways D and C, and County Road EE. University of Wisconsin-Platteville engineering students developed the map based on state standards for on-road bicycling.<sup>1</sup> In addition to walking and biking there are also trails for snowmobiling.

Figure 6: Green County On-road Bicycle Map



<sup>1</sup> A Bike Tour: The City of Monroe and Green County  
<https://swwrpc.maps.arcgis.com/apps/MapJournal/index.html?appid=89ab32a5a2984108bb8f31a067ba9822>

## 2022 Budget

The Parks Commission Budget is allocated to the following line items:

- Town Park/Town Trail Sinking Fund - \$4,500
- Trail Development - \$500
- Per Diems - \$2,405
- Payroll Taxes - \$181
- Parks Workshops/Projects - \$4,938
- Park Postage - \$250
- Printing - \$300
- Arbor Day Tree Planting - \$300
- TPE Membership, New Glarus Woods - \$300
- Recruitment - \$100
- Pool Scholarships - \$26
- Maintenance/Restoration of BRC - \$1,200

## Needs Assessment

To accomplish the outdoor recreation needs assessment, Vierbicher and the Town Parks Commission developed an outreach strategy for the Town of New Glarus.

Public meetings were held allowing for the community to learn about the CORP and provide feedback on needs, goals, and objectives.

## Sample Recreation Open Space Standards

Park and Open Space Standards and Guidelines for the Plan Commission and Parks Commission govern the process for locating future parks. There are three typical sizes of local parks the Town would provide: a mini-park, a neighborhood park, or a community park. Each size park has a recommended service area (distance to park), desirable size, (number of acres per one thousand people), and desired site characteristics.

This classification system presented in Table 2 is intended to serve as a guide to planning—not as an absolute blueprint. Sometimes more than one component may occur within the same site (but not on the same parcel of land), particularly with respect to special uses within a regional park. Planners of park and recreation systems should be careful to provide adequate land for each functional component when this occurs.

The National Recreation and Park Association (NRPA) suggests that a park system, at a minimum, should be composed of a “core” system of parklands, with a total of 6.25 to 10.5 acres of developed open space per one thousand people. The size and amount of “adjunct” parklands will vary from community to community but must be taken into account when considering a total, well-rounded system of parks and recreation areas.

Table 2 communicates the recommended standards for service area, size, density, use, and site location. Mini parks are the smallest type of Municipal Park, ideally spanning no more than one acre of land and designed to service no more than the quarter-mile radius surrounding the park. Neighborhood parks are the next largest type, preferably spanning at least 15 acres of land and serving up to a half-mile radius in every direction. These parks generally accommodate approximately 5,000 users—roughly the size of a city neighborhood.

Community parks are the largest park type. Designed to serve users within a 1 to 2 mile radius, community parks are ideally no less than 25 acres in size, with a density of 5 to 8 acres per thousand users. Parcel sizes are typically one acre for mini parks, two acres for neighborhood parks, and five acres for community parks.

Table 2: Sample Recreation and Open Space Standards

Park Type	Service Area	Desireable Size	Acres/1,000 Population	Use	Site Location
Mini Park	Less than ¼ mile radius	One acre or less	.25 to .50 acres	Specialized facilities that serve a concentrated or limited population or specific group such as young children or senior citizens.	Within neighborhoods or adjacent to schools, elderly housing. The facility should be easily accessible by walking for senior citizens or parents with small children.
Neighborhood Park	¼ to ½ mile radius to serve population up to 5,000 (a neighborhood)	15+ acres	1.0 to 2.0 acres	Area of intense recreational activities such as field games, court games, crafts, neighborhood center.	Proximity to elementary schools, or centrally located in developed areas with safe walking and biking areas.
Community Park	Several neighborhoods 1 to 2 mile radius	25+ acres	5.0 to 8.0 acres	Area of natural or ornamental quality for outdoor recreation such as walking, viewing, sitting, picnicking, could have some field and court games.	Proximity to community facilities and resources.

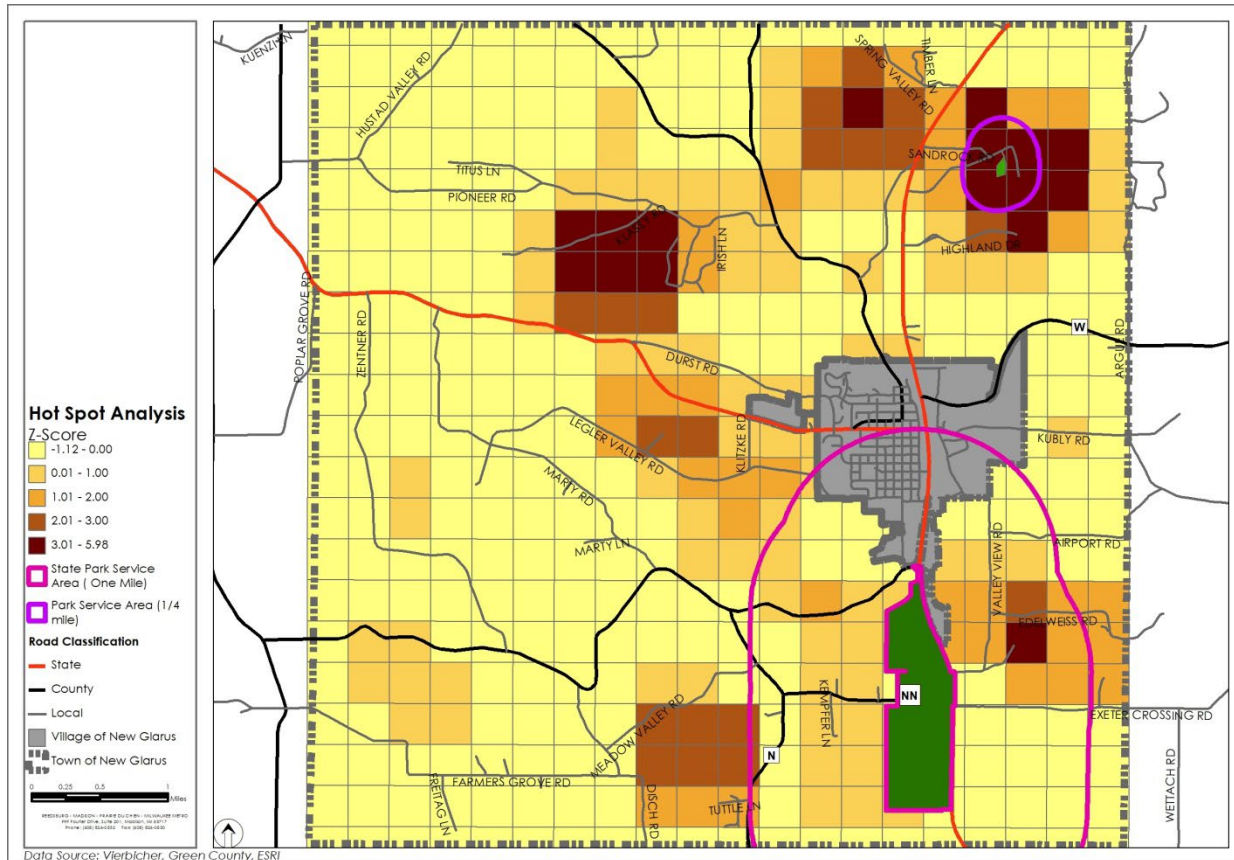
Placement of parks is dependent on multiple factors. Parks should be easily accessible from commonly used pathways such as roads, sidewalks, or trails, and should function as a complement to surrounding uses. Residents and visitors are more likely to use parks if they are easily accessible from high population areas, and their construction fluidly mixes with surrounding commercial or residential areas. Likewise, parks should be located in areas with high enough population densities to ensure adequate use.

Based on these criteria, there are multiple locations in the Town that would accommodate each type of park. Figure 7 shows a heat map of the Town based on population density. Dark brown areas indicate locations with the highest population densities, with gradually lighter colors indicating areas with lower population densities. Yellow areas generally indicate agriculture, open space, and undeveloped land, and green regions indicate the location of existing parks.

The Bluebird Ridge Conservancy and New Glarus Woods State Park are both located within the planning area and serve portions of the Town. A contiguous ring of moderate to higher density neighborhoods surrounds the municipal boundary of the Village of New Glarus. New Glarus Woods State Park serves the southern half of the Village along with many of the southern residential areas in the Town. Bluebird Ridge Conservancy serves the higher density residential area in the northeast of the planning area.

Demand for future parks is greatest in the higher density residential areas lying just west of the Village, along with the higher density areas in the Town's northern and northeastern portions, as shown on Figure 7. The Town could consider placing a large community park in low density areas along Old Madison Road in order to capture residents from the three large clusters of high population density in the northern half of the planning area. Location of a neighborhood or community park would also capture large numbers of residents if located off either Durst

Figure 7: Population Density



Road or Legler Valley Road due west of the Village boundary.

Factors affecting when to build new parks include: possible changes to land use, population growth, and expected development patterns. While retrofitting of old development into parkland is a possibility, these circumstances generally mean that a municipality has less control over the aesthetics and design of the park. Plans for future parks in low density areas should be considered well in advance of development to ensure parks harmoniously complement adjacent uses. Population growth is the second determining factor contributing to decisions about park placement. The Town's population is expected to grow by 44% between 2016 and 2040, adding substantial future demand for recreational opportunities. The Town should monitor expected population changes and identify areas of expected future growth.

### Community Survey

A survey was distributed online and made available in hard copies at the Town Hall. In total, 173 individuals responded from the Town and surrounding area. A total of 97 individuals specifically from the Town of New Glarus participated in the survey. The results from the Town residents are included in the appendix.

The survey results were shared with the Parks Commission, on the Town's website, and at a public forum held on July 20, 2022. The results of the survey, public forum, and evaluation were instrumental in framing the outdoor needs assessment.

The primary purpose of the survey was to understand the current usage of available amenities, and identify the need for future parks, facilities, and recreational spaces. Figures 9 - 11 show the use of amenities and interest in amenities.

Survey participants noted in the open-ended questions that they favor more trails that connect Town neighborhoods, Village amenities, and regional trails. Several comments mentioned that a community center containing an indoor pool, fitness facilities, multi-purpose gyms, and a

walking track are desired. It was also mentioned that if the Town supports the Village park and recreation program, then the park programming fee should be lower for Town of New Glarus residents.

Most users indicated they never use the following

- Baseball/Softball Fields
- Soccer Fields
- Basketball Courts
- Tennis Courts
- Conservancies
- Volleyball Court
- Public Swimming Pool
- Playgrounds and Equipment

Most of the users indicated they use the following:

- Natural Surface Recreation Trails
- Paved hiking/biking Along Roadway

More users indicated they were not interested in the following:

- Football/Lacrosse Fields
- Frisbee Golf Course
- Designated Bike Trails
- School-year Recreational Programming
- Pickleball Courts

More users indicated they are interested in the following:

- Community Recreation Center
- Outdoor Ice-Skating Rink
- Adult Recreational Programs
- Trails that Connect Town to Village



Figure 8 & 9: Indicate how often your household uses the following:

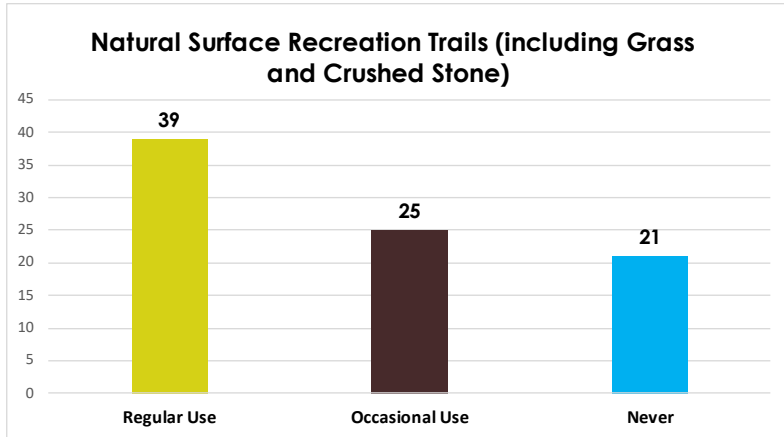
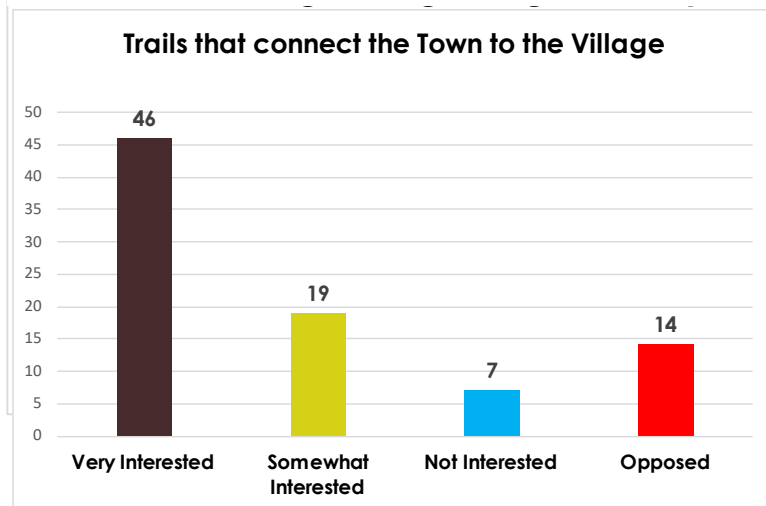
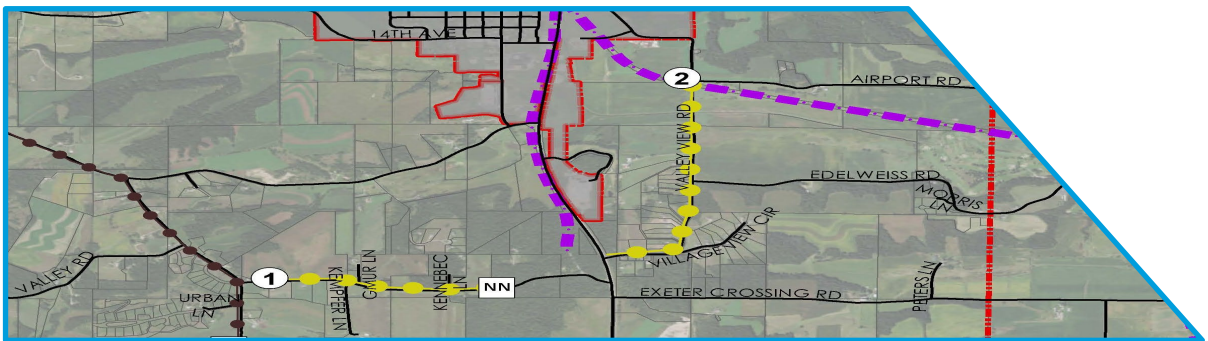


Figure 10: Indicate your households interest in expanding these services?





# RECOMMENDATIONS

## RECOMMENDATIONS

The Town has great opportunity to provide active and passive recreational activities and to connect recreational activities inside and outside of the Town. The recommendations in this section have been developed based on feedback from citizens of the Town, and discussions within the Parks Commission, and Plan Commission. As the Town develops, the development policies of the Town may provide opportunities to expand upon these initial recommendations.

In 2017, The CORP Committee spent time during the first public forum identifying potential trails that connect to neighborhoods, state parks, the Village, and the Sugar River Trail. At the second public forum, the CORP committee discussed the community-wide survey results; specifically the demand for a trail to connect the northern subdivisions to the Village. The focus of the discussions was to enhance the existing Town facilities and provide better connections between the residents and these facilities. Creation of new facilities (other than new connections or trails) was not considered a significant priority at this time.

In 2017, The CORP committee identified nine potential trails and ranked their priority for connections based on the community survey, existing connections, and potential future development. However, in 2022 through engagement with residents since 2017 and the 2022 plan update process, the Parks Commission has updated the proposed trail map. No proposed trails were removed from the map. However, two trails that were identified as high-priority in 2017, and one medium-priority were reduced to low-priority. Thus, leaving two trails as the priority. No work should be completed on the low priority without full discussion on the improvements. Table 3 identifies the potential future trails, the priority, length, and location. It is assumed that the majority of trail locations will be in the public right-of-way. However, in certain locations, the Town will work with local property owners to negotiate access easements for public trails. The trail construction type has not been

identified for each trail at this time, but generally, the trails considered would be a grass or crushed stone surface.

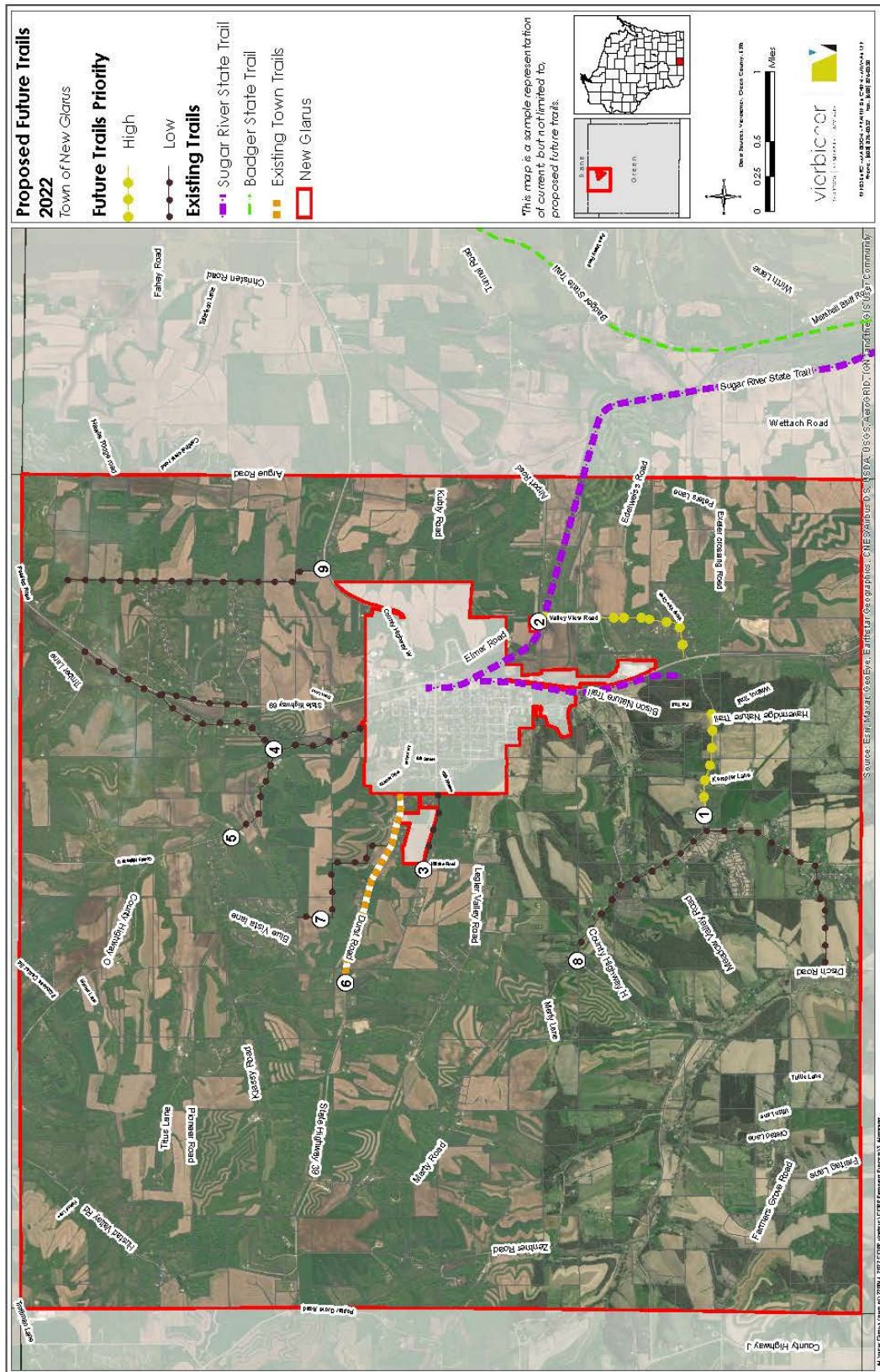
Figure 11 shows the potential trails along with the corresponding Trail ID numbers and priority levels. This map represents both existing and potential future trails. Additional research and surveying will need to be completed to determine the placement and construction type of trails. These trails are intended to connect various locations within the Town and to increase access to the community parks system. Because these trails will serve the entire Town by increasing access and connectivity, it is justifiable to consider impact fees as a method to capture the portion of costs attributable to new development.

Executing these recommendations is essential to accomplishing the goals and objectives of this plan. On the following pages, tables presenting the list of Goals in the 'Plan Goals and Objectives' section, are paired with strategies to achieve the goal, a time frame, and responsible parties or partners for implementation. A significant component of implementing the plan goals is collaboration between large and small acreage landowners, developers, and the Town Committees and Boards. Balancing the Town goals with individual property owners' rights is paramount to maintaining goodwill throughout the community and fostering an environment that supports the plan goals. Achieving plan goals using the condemnation process is not desired.

Table 3: Potential Future Trails Information

Trail ID	Priority	Length	Location
1	High	0.74	County Highway NN - from County Highway N to beginning of New Glarus State Woods Park boundary.
2	High	1.22	Valley View Rd - from Sugar River Trail to Highway 69.
3	Low	0.49	County Trunk 39 - from Klitzke Rd to Village boundary.
4	Low	2.87	County O to Old Madison Rd - From County Highway O at the Village Boundary, right on to Old Madison Rd to Highway 69 then split north to Spring Valley Rd and split south to Windmill Ridge Rd.
5	Low	0.75	County Highway O - from Highway U to Old Madison Rd.
6	Complete	1.4	Durst Rd - from Village boundary 1.41 miles west - Completed!
7	Low	1.18	Through property from Durst Rd to connect Blue Vista Ln (route not determined).
8	Low	3	County Highway N From Rustic 81 Rd, right on Hefy Lane to Disch Rd.
9	Low	1.9	Through property from County Highway W north 1.9 miles (route not determined).

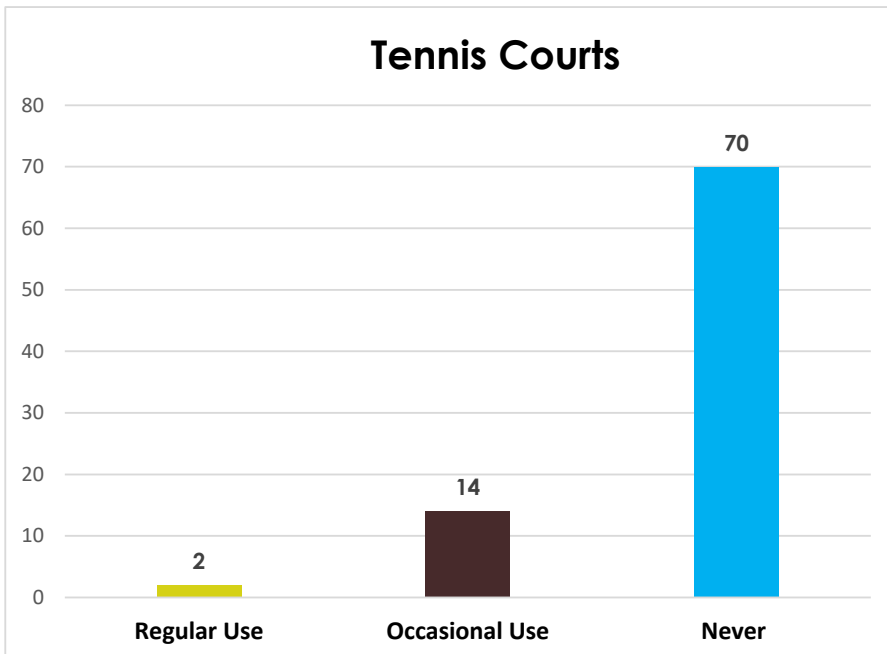
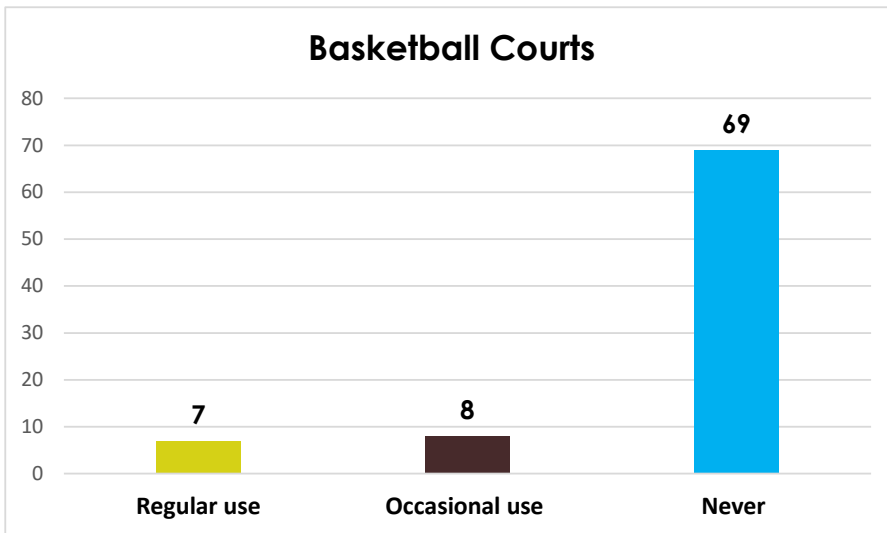
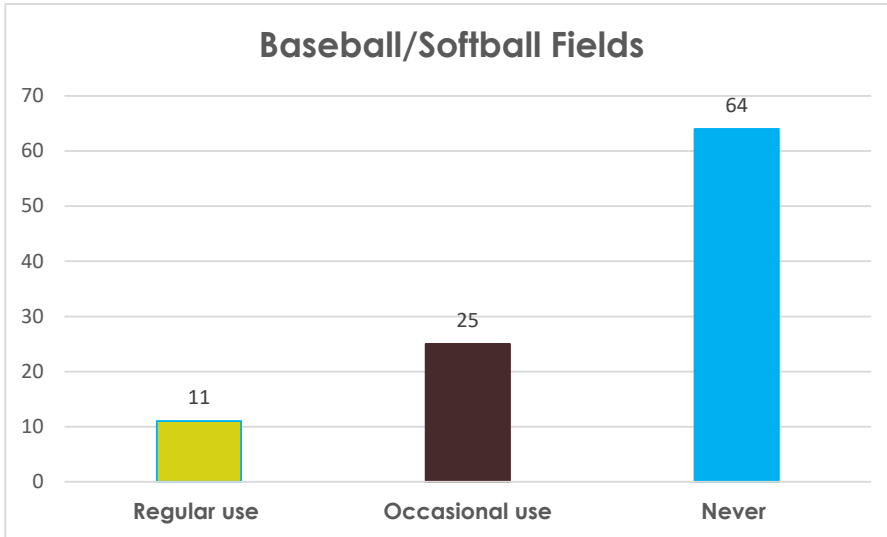
Figure 11: Town of New Glarus Potential Future Trails



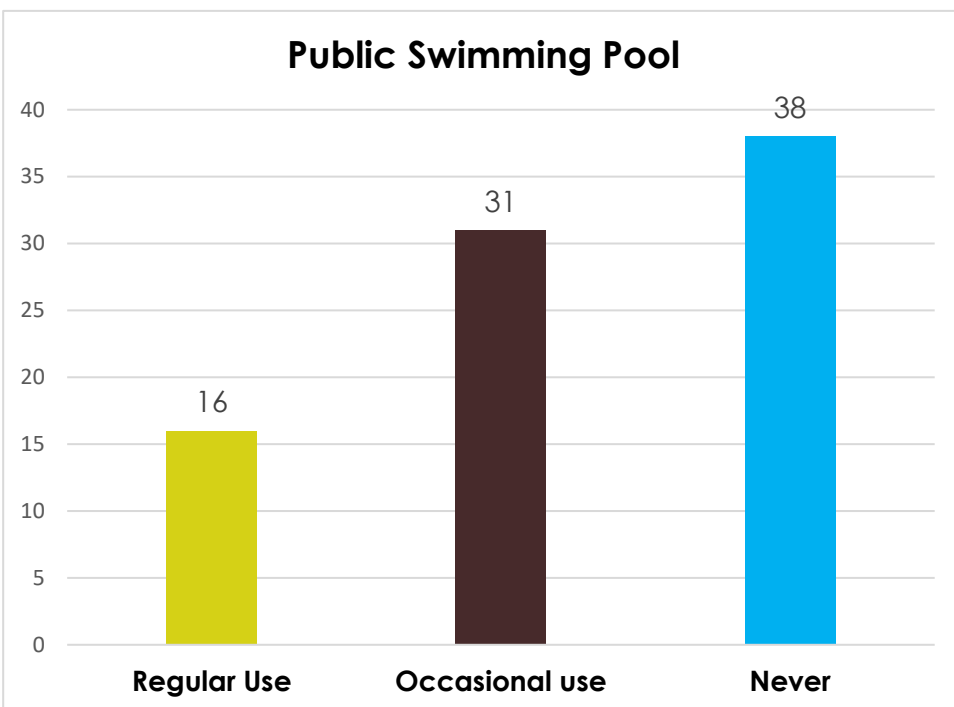
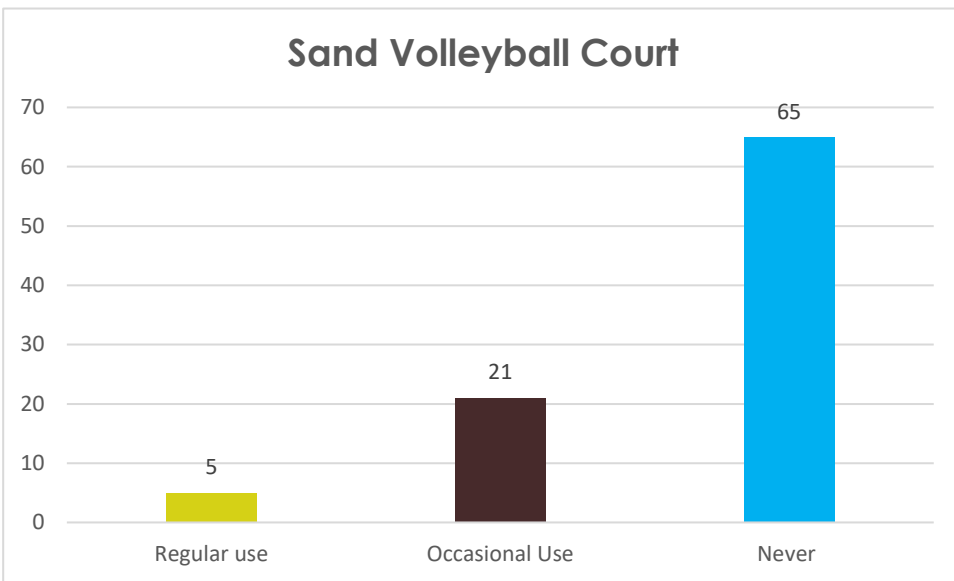
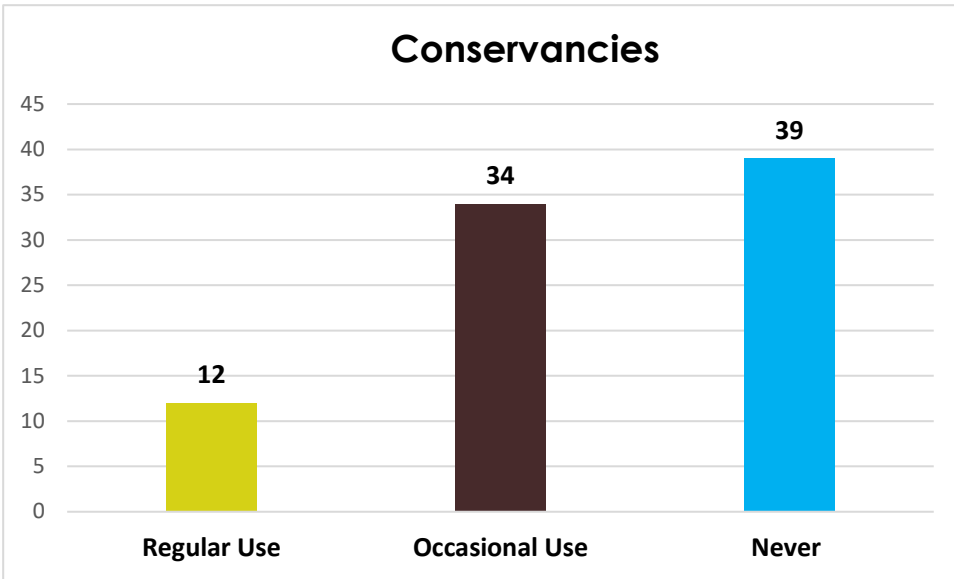
Town of New Glarus CORP Recommendations			
Goal	Strategy	Time frame	Responsible Parties
G1	Continue to search for a site appropriate for a Town park.	Ongoing	Parks Commission, Joint Parks Commission, Plan Commission, School District
G1	Research the demand and feasibility of adding soccer and baseball fields or coordinating with other communities in Green County for the increased demand for fields.	Ongoing	Parks Commission, Green County Property Committee, Insurance Committee, Green County Leaders, School Districts, Joint Parks Commission, Soccer Associations
G1	Support current and future summer recreation activities as identified by Town residents.	Ongoing	Parks Commission, Joint Parks Commission
G1	Continue the restoration efforts of the prairie remnant and oak savanna at the Blue Bird Ridge Conservancy and promote its use as a classroom tool.	Ongoing	Parks Commission
G1 & G2	Develop the trails identified in the Future Trails Map.	Ongoing	Parks Commission, Town residents, Green County Tri-county trails committee
G2	Add "Refer to CORP" to a development checklist to make sure park and trail recommendations are included in developer's plans	Short-Term	Town Staff/Administration, Plan Commission, Parks Commission
G2	Ensure land owners, Town residents and DNR have input in the trail development.	Ongoing	Parks Commission
G2	Collect park impact fees from new developments sufficient to meet the anticipated cost of providing park improvements.	Ongoing	Parks Commission, Plan Commission
G2	Purchase or secure easements for trails.	Ongoing	Parks Commission, Plan Commission, Technical Review Committee
G2	Identify existing and potential schools, parks, paths, Ice Age Trail and community connection points.	Ongoing	Parks Commission
G2	Establish a community park fund for donations.	Immediate	Parks Commission and Town Board
G2	Continue to dedicate a percentage of each year's park budget account for trail development.	Ongoing	Parks Commission
G2	Utilize best management practices to install trails including access for disabled users.	Ongoing	Parks Commission
G2	Research and obtain grants to support trail development.	Ongoing	Parks Commission, Joint Parks Commission, Town Board, Village Board

Town of New Glarus CORP Recommendations			
Goal	Strategy	Time frame	Responsible Parties
G2	Acquire land through combination of state grants, federal grants, county grants, gifts, donations, and Town resources.	Ongoing	Parks Commission
G3	Mark conservancy areas with proper signage and list on Park Master Plan map.	Ongoing	Parks Commission
G3	Identify naturalist and environmental groups to assist with preservation and grant resources.	Ongoing	Parks Commission
G3	Establish guidelines to accept or acquire land for future development or preservations.	Short-Term	Parks Commission
G3	Consult with the Green County Forester regarding the Town tree planting program for interested property owners.	Ongoing	Parks Commission
G4	Work with the Village to reduce the Town of New Glarus non-resident fee for park programming and pool pass.	Ongoing	Parks Commission
G4	Continue to work with the Village on building a joint community center.	Ongoing	Parks Commission, Joint Parks Commission
G5	Create a volunteer database that receives quarterly notices about volunteer opportunities. Utilize the contact information from the community survey of participants that noted to be notified of volunteer opportunities.	Immediate and ongoing	Parks Commission
G4	Create partnership guidebook that includes engagement with the business community, press releases, recognizing the business support in the news and online, and potential naming rights.	Immediate and ongoing	Parks Commission
G5	Continue to provide the workshops and look to develop new workshops.	Ongoing	Parks Commission

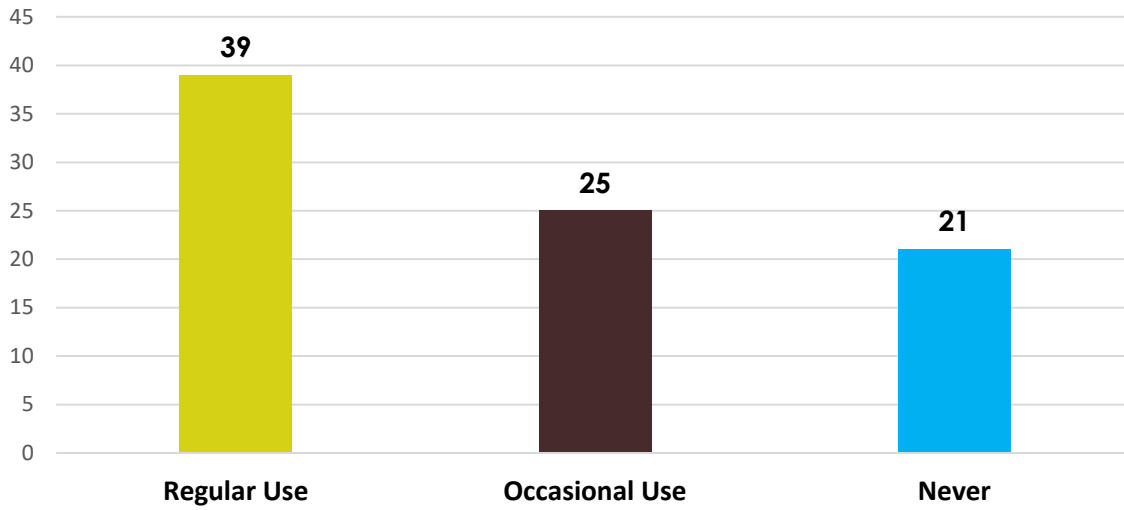
1. The following recreational opportunities and facilities are available at the Town and Village parks and conservancies. Please indicate how often your household uses each of these amenities.



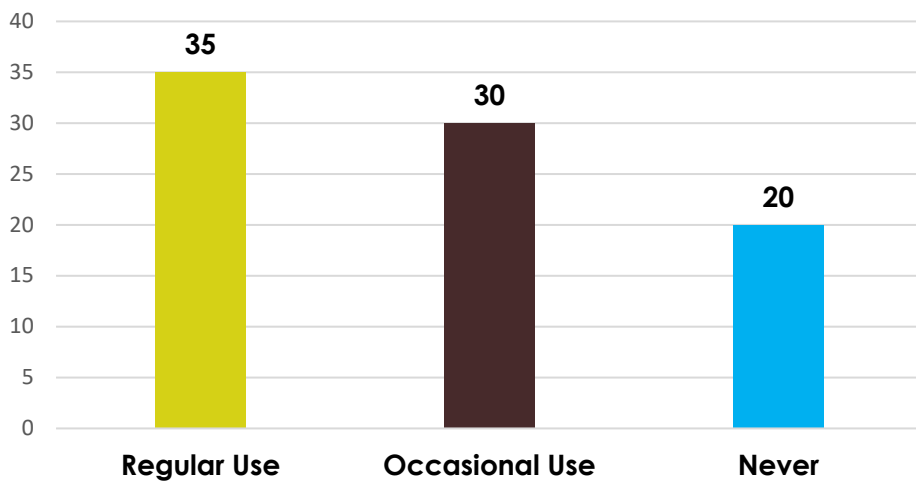




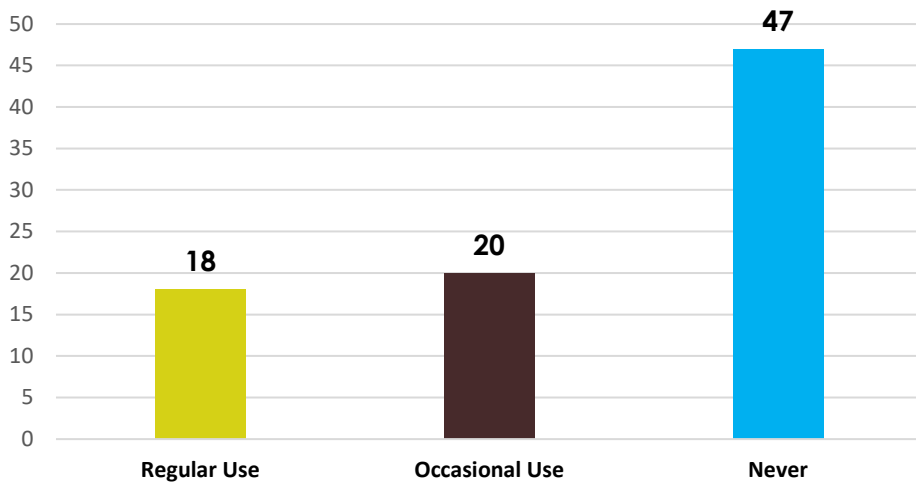
## Natural Surface Recreation Trails (including Grass and Crushed Stone)



## Paved hiking/biking along roadway



## Playgrounds and Equipment



2. If there is a facility or recreational opportunity that your household uses that is not listed above, please indicate it below and how often your household uses it.

1. Sugar River
2. Fishing in local streams,
3. Snowmobile trails; UTV trails (where allowed); Golf Course (occasionally)
4. Let's talk about converting abandoned Tennis courts into Pickleball Courts. Would use 3 or more times weekly. Fastest growing sport in America.
5. We use the State bike trails to run, walk or bike almost every day of the year.
6. Bike trails please add
7. The baseball field usage is limited due to the programs offered and field availability. Our family has chosen to play baseball in Verona to get consistent programming.
8. canoeing kayaking and paddleboarding.
9. New Glarus Woods
10. Pickle ball (on tennis courts)
11. We use our town road for walking 1-2 times a week.
12. Cross country skiing. 5x annually
13. YMCA 5 times a month
14. NG Woods Park - regular user
15. pickle ball
16. Encourage collaboration with the Village for joint use projects to minimize costs and maximize services.
17. Track - 10X per year, indoor pool 15X per year

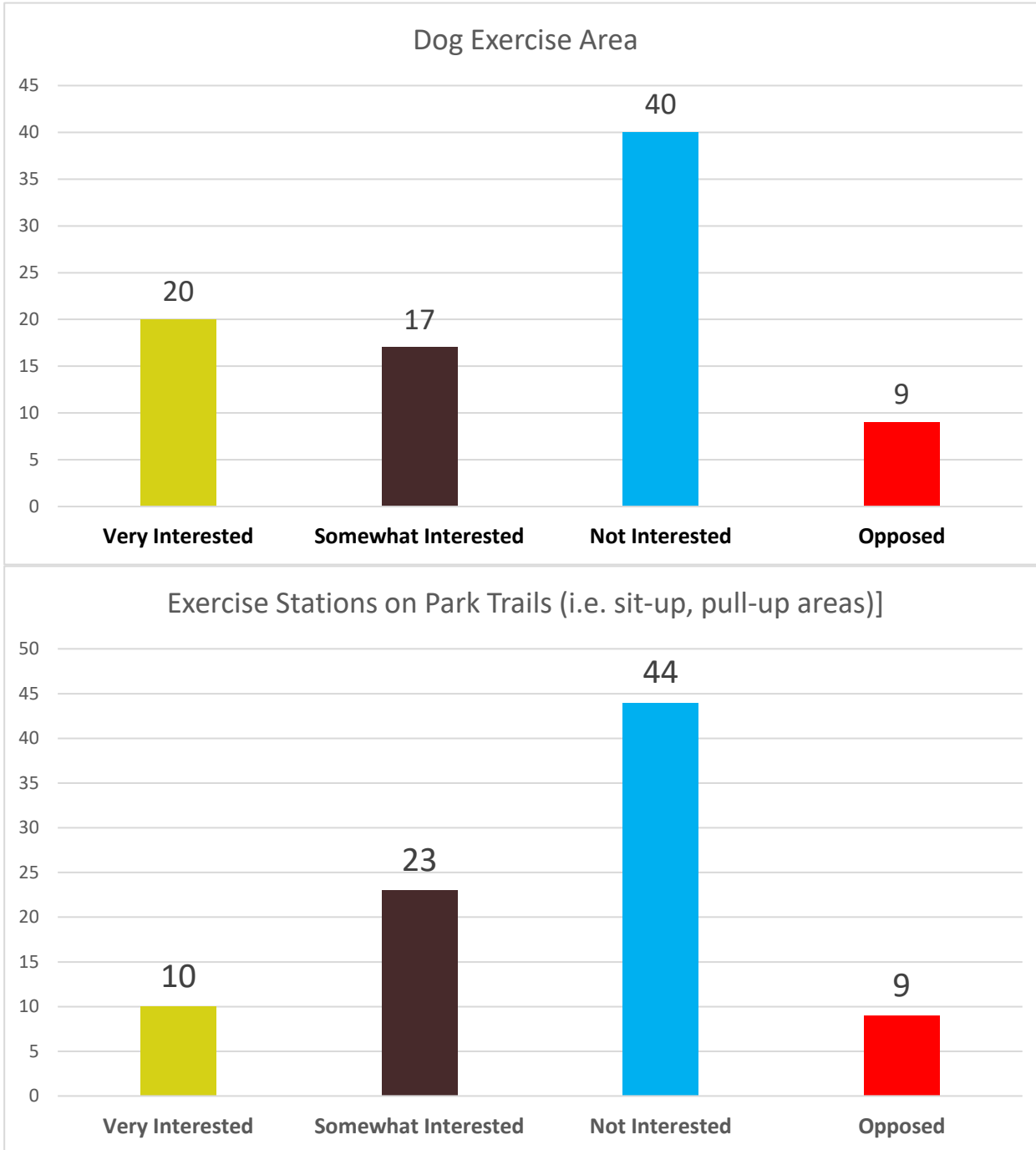
### 3. Please provide any comments you may have regarding the Town's and Village's existing outdoor recreation facilities and amenities below.

1. Town residents have to pay additional charges over Village residents to participate in Village activities for programs at their facilities. The Town does not have any of their own athletic facilities separate from those of the Village, and the Village's fields are significantly lacking to provide space for the number of kids in their programs, such as summer baseball and softball. For example, most other communities around us have more Fields where the Village has only one softball and one baseball diamond. I would like to see the Town partner more with the Village to construct additional athletic fields (located either in the Town or the village), and in doing so in exchange for the Town's financial participation, eliminate the surcharge that the township kids are charged to participate in sponsored activities.
2. The tennis courts need repair and upkeep. This is a sport that all age groups can play
3. The paved bike path in town to the state is in horrible condition . Tennis courts need resurfacing as well.
4. Baseball/softball fields should include more amenities for the sports such as batting cages and pitching areas (especially at Glarner Park). I think the town should provide more money to the village to share these costs. I would prefer to pay residential rates to the village for programs rather than non-residential.
5. Instead of building new they should concentrate on maintaining or expanding existing. For example an indoor pool facility to use year round would be awesome.
6. Assume this question is about question number 1, if so that is above not below. I would like to say however that I do think the Tennis Courts need attention and are a great asset we should renovate. Also, we favor many more trails connecting outlying areas of the Town to the Village. In particular we strongly favor connecting the State Park Woods to the trail going into the Village.
7. "As an avid bicyclist I would like to see future road improvement include a paved bicycle lane (at the edge of each lane, not a separate bike path) or at least consider it during design. Having spent 34 years in the civil engineering field I am well aware of the increased costs, problems and design restraints - limited right of way, etc.  
Biking is becoming more and more popular each year so I think it is important for the Township to be proactive in this regard. I would also comment that I think the Township has done very well keeping the taxes reasonable - most of us are aware that we can't have improvements without raising taxes. I would just hope that consideration be given as we move forward. Thank you."
8. Now that I'm over 65 and my kids are grown, I don't use many facilities. When my kids were around, we did you these facilities often.
9. The bike trail is an extremely rough ride. Consider adding fresh stone to bike trails or consider corporate sponsorship to pave bike trail. This seems to work with bike trails in northern Wisconsin. This might be outside of this pole, but I do feel you will attract more visitors with a nicer bike trail.
10. We would like to see a Town public park and joint Town-Village pickleball courts.
11. I didn't know that the Town and Village had any conservancies. Our children definitely used the other rec facilities/amenities when they were growing up, and we look forward to using playground equipment when grandchildren visit.
12. Add bike trails
13. Tennis courts aren't used because of poor condition.
14. It would be great to have Town and village support to keep the little sugar river open for paddling recreation! A few Village citizens opened (cut fallen tree obstructions)the river from the Kubly Elmer road area down to the Exeter area. Possibly ask the NG Brewery for an access/landing point? Another access could be North at a bridge or South along DNR land along the Sugar river bike trail.
15. The town and village have a great variety of existing recreational facilities. Compared to other towns and villages around Wisconsin of comparable size, New Glarus has significantly more opportunities than other communities. The Sugar River Trail and New Glarus Woods State park are also available for anyone to use.
16. I understand that the softball and soccer fields in the Village are over-capacity.
17. Would like to have trails extended north of the village to utilize for walking biking running.
18. Add pickleball lines to tennis courts
19. The neighborhoods north are disconnected from the village and highway 69 is not safe for foot or bike traffic. Please consider building a recreation trail alongside highway 69.
20. Village does not seem to take much care in recreation facilities, tennis courts by high school are a mess and grass at new baseball field far too long before first cutting.
21. Love the parks for our family and pool!
22. I feel our facilities need to be updated. We travel to other communities regularly for youth sports and our facilities are lacking to say the least. I think it is time to put some effort into, at minimum, maintaining these facilities and ideally making improvements! A working concession stand, bleachers at every facility, nets on the tennis courts and a court that is in decent shape to play on and better parking for some of the parks.
23. There are some facilities however no cohesive plan to expand/market

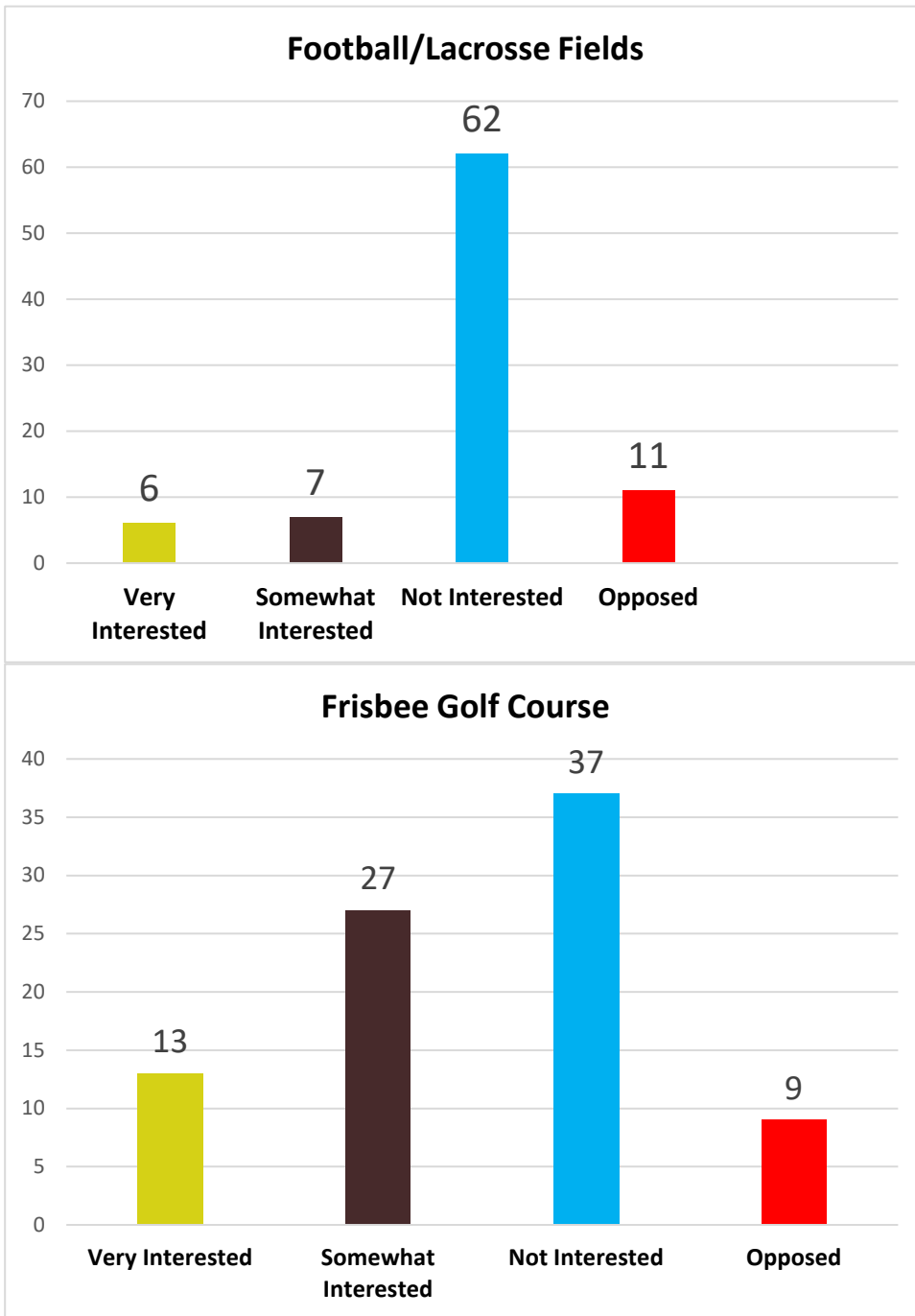
3. Please provide any comments you may have regarding the Town's and Village's existing outdoor recreation facilities and amenities below.(continued)

24. "Are efforts being made to ask residents to consider bequeathing land/preservation funds to Town in their wills?"
25. I am very aware of what the Village offers for outdoor recreation facilities and amenities. I am not sure of what the Township is currently offering or where they are even located. I struggle with the fact that the Township wants to pursue outdoor recreation facilities and amenities when we are so close to those offerings in the Village along with the proximity of the State Park and the bike trail in our own backyard. My taxes already support the State Park and bike trail. We have these wonderful facilities yet people still choose to run or bike on the very dangerous Hwy 39.
26. I feel like some are kept up well and others not. For example, there are broken swings at the village park playground that haven't been replaced or fixed for a while now. New playground equipment would also be nice.
27. CURRENT FACILITIES ARE SUFFICIENT
28. We need new tennis/pickle ball courts!
29. Might there ever be an outdoor ice rink in winter?
30. pickle ball
31. Any plans for pickleball courts?
32. It would be really nice to have a trail that connects the south side of the NG township into town and out to the north side of the township. Basically, a trail on valley view road that connects to the state park trail (currently dangerous for short stint on highway 69), then also runs a loop to the north side township as well. Clearly tied into going through the town of New Glarus in between.

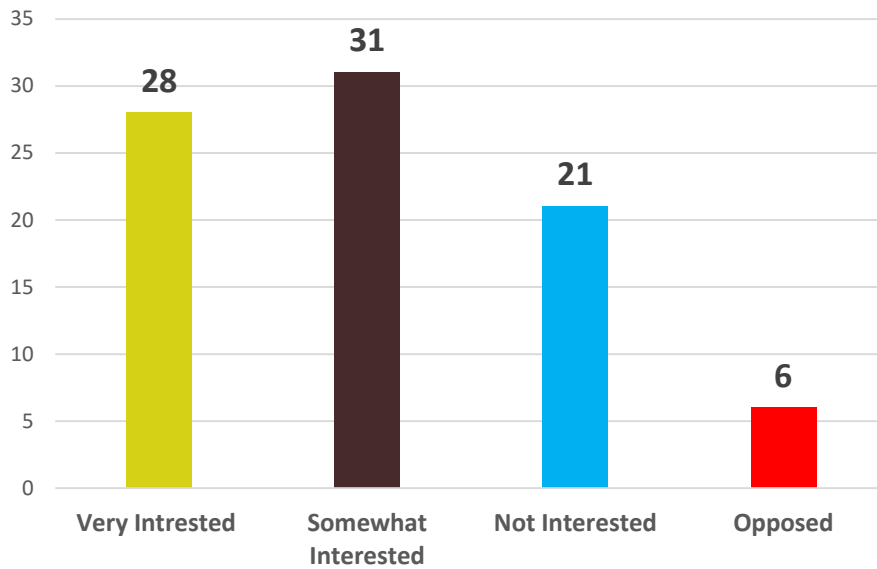
4. The following recreational facilities/services are not available in the Town of New Glarus. Please rate each of the following items regarding your household's interest in the Town exploring these services.



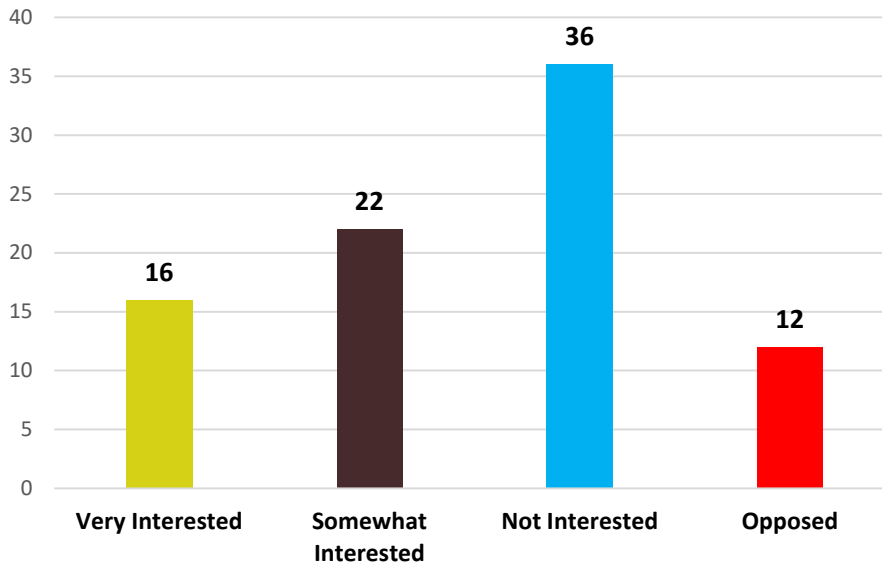
4. The following recreational facilities/services are not available in the Town of New Glarus. Please rate each of the following items regarding your household's interest in the Town exploring these services.



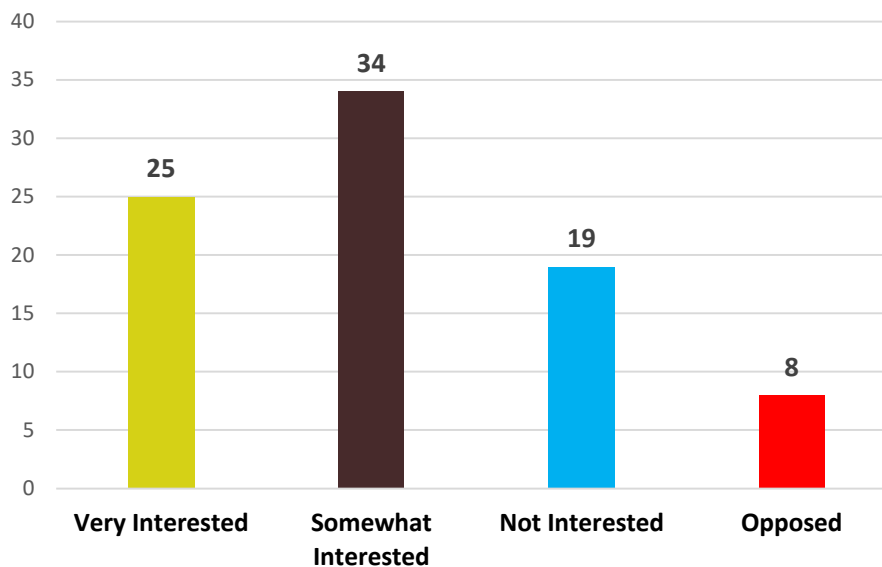
## Indoor Community Recreation Center



## Designated Mountain Bike Trails

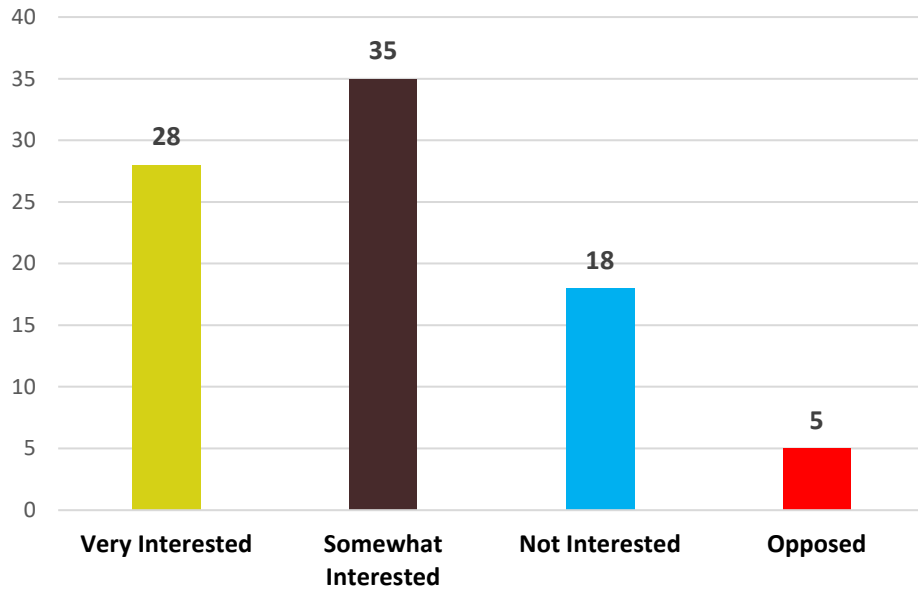


## Outdoor Ice-Skating Rink

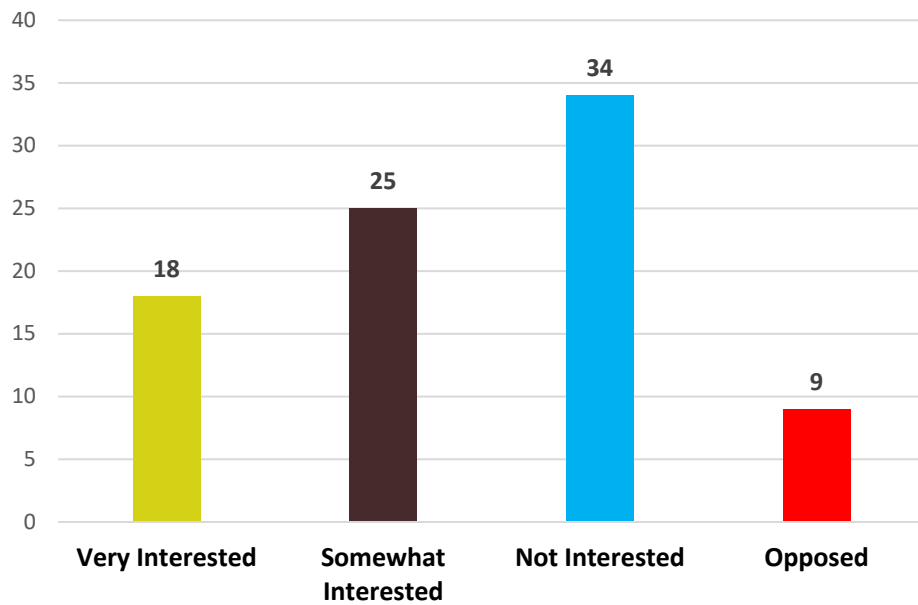




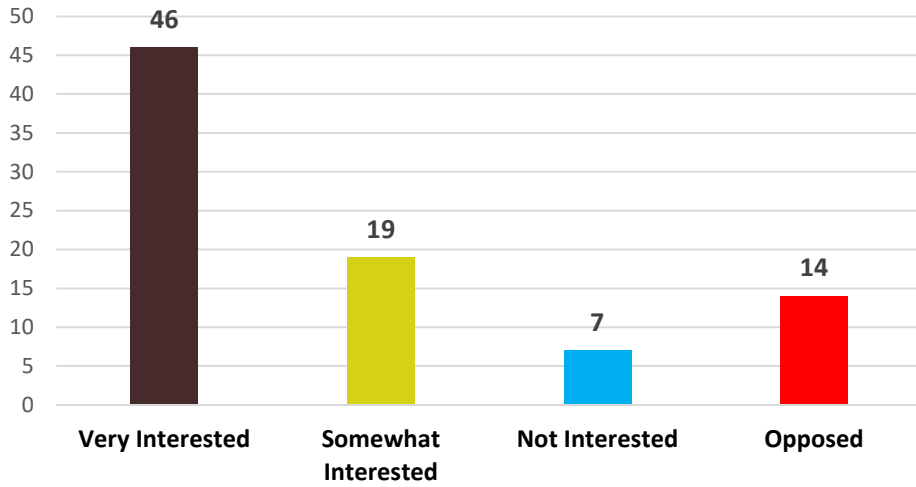
### Adult Recreational Programs



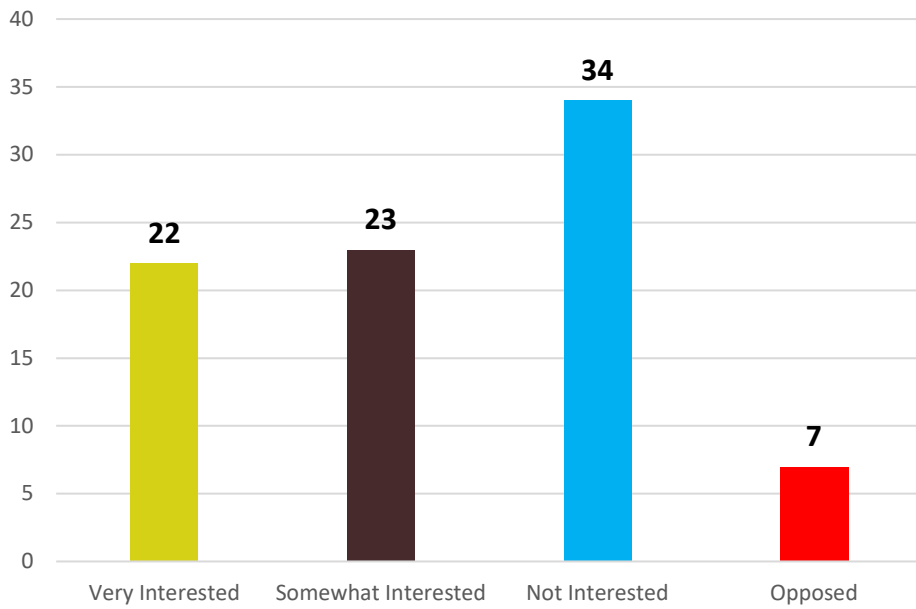
### School-Year Recreational Programming



## Trails that connect the Town to the Village



## Pickleball Courts



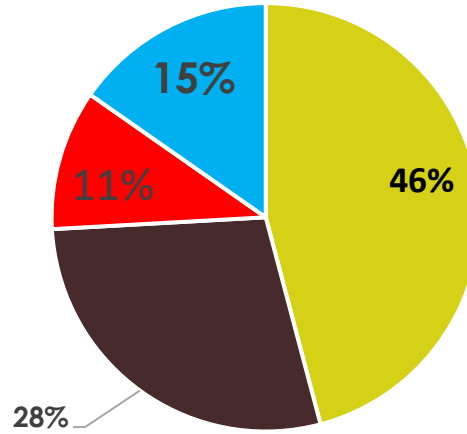
**Q5. The Town works to obtain property easements to link existing and proposed trails. How important is it to you that the Town continue to obtain these easements, extending existing trails?**

■ Very Important

■ Somewhat Important

■ Not Important

■ Opposed



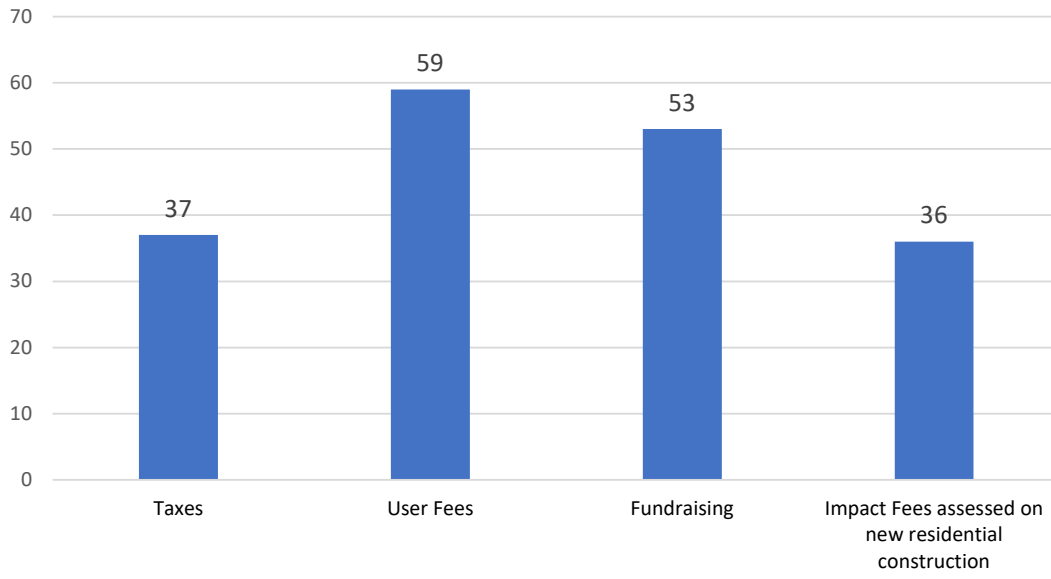
Q6. Are there missing trail connections you would like to see? Where would you like connections added?

1. Old Madison/69 to the Village which would connect the Windmill Ridge Sub and possibly Highlands too
2. Perhaps a safe walking trail from the Village to Baileys Run Winery
3. A trail along Hwy O and Pioneer to connect into town. Expansion of bike trail along Hwy 69N to connect to Belleilles trail system.
4. Yes, connect the State Park Woods to the trail into the Village.
5. A trail along CTH NN, N and H; a trail along the west side of Hwy 69 where the snowmobile trail is located to provide safe access to the Village for the residents of the Highlands and Windmill Ridge; a trail along Hwy. 39 west of the Village to Bailey's Run; a trail connecting Valley View Road to the Sugar River Trail and also to the New Glarus Brewery.
6. Old Madison Road to the Village.
7. Wind mill ridge, blue vista
8. "North along the river."
9. North of village limits along Hwy O
10. Along the hwy 69 corridor north of the village
11. County N
12. Old Madison Road area to town.
13. South end- the trail that ends at the clinic entrance should go up around the high school and follow the village edge on the west heading north all the way around tower circle and cross 39 to go all the way around to nursing home
14. Hwy 69 From Spring Valley to Village.
15. Trails should lead DIRECTLY from township areas into village, not making big loops. Trail heads should have designated parking areas NOT on roadsides abutting personal property. Would prefer ATVs and UTVs not be allowed on trails.
16. Township to village
17. Continuation of the bike lane on Valley View Road. From Edelweiss Rd to the sugar river trail (at a minimum) or all the way to town.
18. Trail connections North of the village
19. As mentioned above. Link the state park trail with an easier direct crossing of highway 69 to valley view, which then already connects to the main trail into town/by golf course

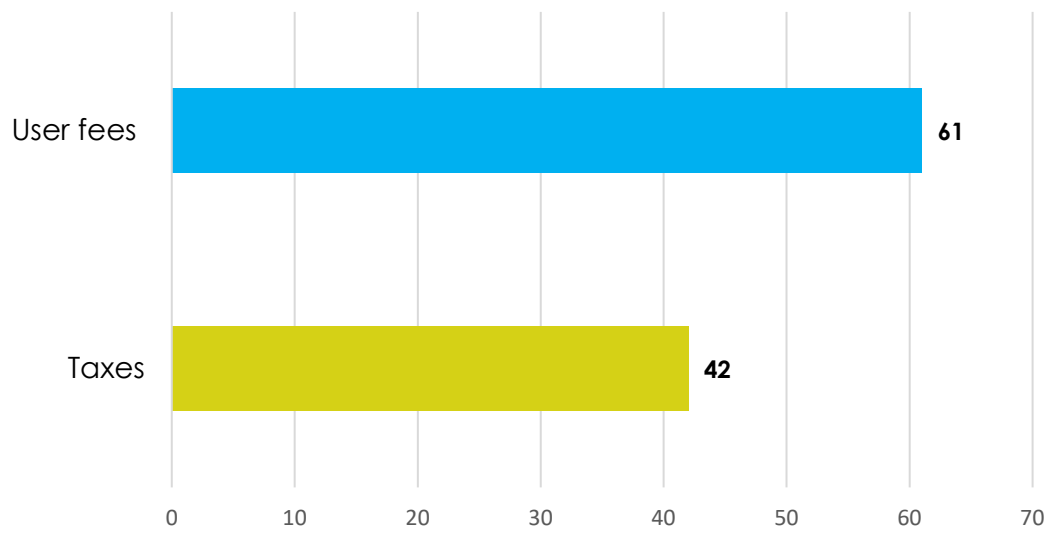
7. Please list any recreational amenities that the Town lacks or are not listed above that you wish were available.

1. Indoor pool
2. Off leash dog park
3. Winter sledding hill!!! Additional softball/baseball field. Soccer fields.
4. Dog recreation area with agility equipment similar to the one in Monroe
5. A community center to use for both children and adults.
6. "Horseback riding trails"
7. Cross country ski/snowshoe trails if we ever get snow in the appropriate months. Fat tire bike trails.
8. Atv trails
9. Soccer fields that could be used for tournaments. This would be good for bringing families into the community for food/shopping/lodging/etc.
10. Parks
11. Designated cross country ski trails.
12. Mt bike trails, dog park,
13. baseball/softball field access is extremely limited.
14. Paddling access along the river!
15. Parking along Windmill Ridge Road, adjacent to the Bluebird Ridge Conservancy
16. UTV and Neighborhood electric vehicle (NEV) street and trail access.
17. Recreational programs for all would be a wonderful addition.
18. More gym space, recreational space/facilities for youth
19. UTV and ATV allowed. Almost all other towns interested in tourism allow these without issues
20. Wish there was more young family recreation, like a splash pad area
21. Senior Center, community meeting rooms that aren't linked to the library/Village Hall
22. Splash pad
23. Adult kickball
24. Outdoor ice skating would be very cool. But overall you all do an amazing job!
25. pickle ball courts
26. Splash pad
27. Improve the baseball/softball facilities, add a track

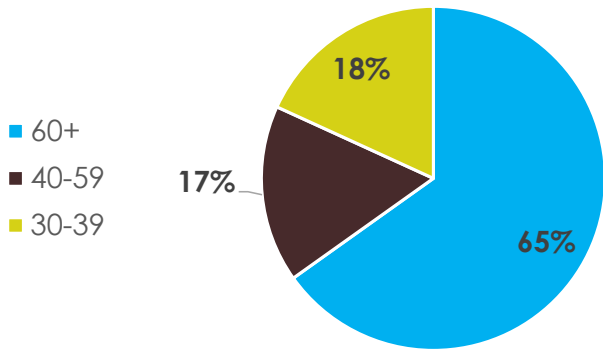
Q8. Please indicate how you think development of recreational facilities should be primarily funded.



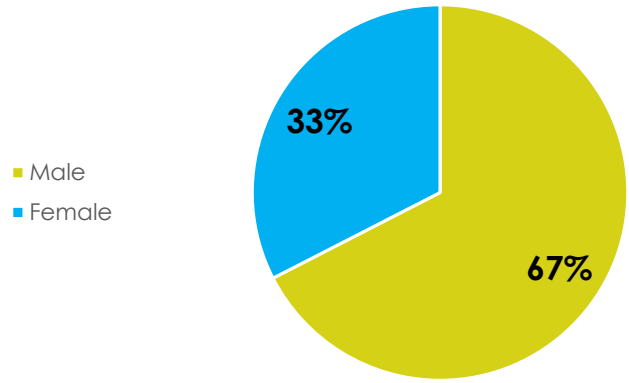
Q9. Maintenance of recreational facilities should be primarily funded by



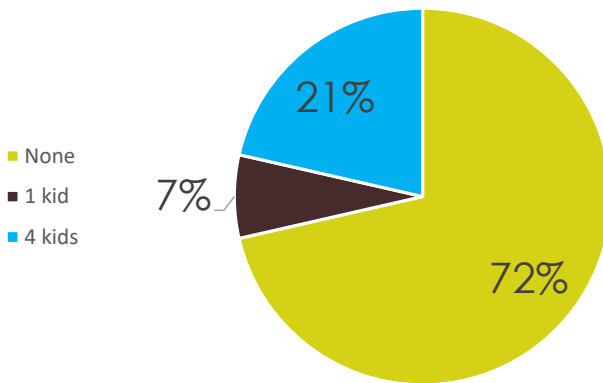
### 12. Which category below includes your age?



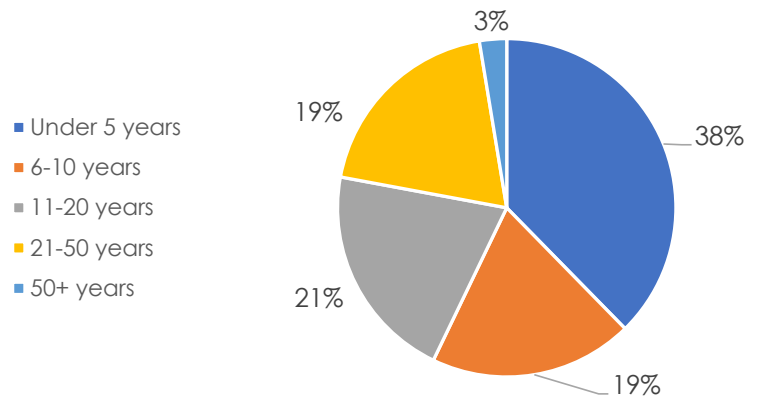
### What is your Gender?



### How many kids do you have under 18?



### How many years have you lived in the Town?



**VILLAGE OF NEW GLARUS  
RESOLUTION 16-05**

**RESOLUTION TO ESTABLISH 2016 SCHEDULE OF FEES FOR USE OF NEW GLARUS  
VILLAGE PARKS AND SWIMMING POOL**

THE VILLAGE BOARD of the VILLAGE OF NEW GLARUS, GREEN COUNTY, WISCONSIN does hereby establish the following fee schedule:

[All pool / recreation programs purchased by April 30, 2016 will receive a 5% discount]  
[1/2 price passes will be available starting August 1<sup>st</sup>]

**POOL PROGRAMS**

<b>SEASON PASS</b>	<b>RESIDENT</b>	<b>NON-RESIDENT</b>
Family (2-4)	\$95.00	\$165.00
Each Add'l Family Member	\$11.00	\$15.00
Single	\$50.00	\$85.00
Child – 4 and under	\$20.00	\$25.00
Daycare Provider	\$15.00	\$15.00

<b>DAILY PASS</b>	<b>RESIDENT</b>	<b>NON-RESIDENT</b>
Adult	\$3.00	\$5.00
Child	\$2.00	\$3.00
Shower Only	\$2.00	\$3.00

<b>SWIMMING LESSONS</b>	<b>WITH PASS</b>	<b>WITHOUT PASS</b>
Preschool – Level 6	\$20.00	\$45.00

<b>SWIM RECREATION PROGRAMS</b>	<b>RESIDENT</b>	<b>NON-RESIDENT</b>
Splash-Splash	\$25.00	\$30.00
Adult Water Aerobics	\$45.00 / \$3.00 Session	\$50.00 / \$4.00 Session
Early Bird Lap Swim	\$45.00 / \$3.00 Session	\$50.00 / \$4.00 Session
Swim Team	\$60.00 / Village Portion	

2 Hours / \$100.00\*

Birthday Bubbles      \*Staff is authorized to increase fee should additional guards be required due to number of attendees.



**PARK / RECREATION PROGRAMS**

	<b>RESIDENT</b>	<b>NON-RESIDENT</b>
Baseball (3-8 Grade)	\$55.00	\$65.00
Softball (2-8 Grade)	\$55.00	\$65.00
Minor League Baseball/Softball	\$25.00	\$30.00
Major League Baseball/Softball	\$25.00	\$30.00
Touchdown Club	\$25.00	\$30.00
Ride and Slide	\$25.00	\$30.00
Park Reservation Fee	\$25.00	\$35.00
Men's Softball	\$150.00 per team	
Coed Kickball	\$150.00 per team	
Coed Sand Volleyball	\$100.00 per team	
Triathlon	Prior to Event	Individual-\$55.00      Team-\$75.00
	Day of Event	Individual-\$65.00      Team-\$90.00
Sport Camps	Daily Park Usage Fee plus Additional Costs	
Sport Leagues (not operated by Village)	\$230.00 per league	
Tournaments (Hosting)	\$75.00 includes concession stand. Plus all other necessary license fees.	

AND DOES FURTHER RESOLVE that all fees shall be paid to the New Glarus Village Treasurer prior to the start of the program.

AND DOES FURTHER RESOLVE that adult shall be defined as an individual having graduated from High School, having completed the equivalent of K-12 education, or 18 years of age;

That family shall be defined as no more than two adults living together and their natural, adopted or foster children whether living with parent or not. If families have a summer daycare provider, they may add that person to their family pass for an additional \$15;

That all season pass fees shall be paid to the New Glarus Village Treasurer before beginning swimming lessons and/or prior to the use of the pool;

Any cancellation made after the registration deadline is subject to a \$5.00 surcharge. No refunds will be given after the first session or practice has taken place, other than in the case of a severe illness or injury that prevents participation. Full refunds will be given for all programs cancelled by the Village. Refunds will be made by check and mailed to the address provided on the registration. Group discounts information can be obtained at the Village Offices.

DATE PRESENTED: 2/16/16

ADOPTED: 2/16/16

\_\_\_\_\_  
Roger Truttman, President

\_\_\_\_\_  
Lynne R. Erb, Clerk

**VILLAGE OF NEW GLARUS  
RESOLUTION 21-26  
RESOLUTION TO ESTABLISH 2022 SCHEDULE OF FEES FOR USE OF NEW GLARUS  
VILLAGE PARKS AND SWIMMING POOL**

THE VILLAGE BOARD of the VILLAGE OF NEW GLARUS, GREEN COUNTY, WISCONSIN does hereby establish the following fee schedule:

[All pool/recreation programs purchased by April 30, 2022 will receive a 5% discount/ **EXCEPT for 3<sup>rd</sup> to 8<sup>th</sup> Grade Baseball and Softball the deadline for the discount is March 1, 2022**]

[1/2 price pool passes will be available starting August 1, 2022]

**POOL PROGRAMS**

<b>SEASON PASS</b>	<b>RESIDENT</b>	<b>NON-RESIDENT</b>
Family (2-4)	\$115.00	\$185.00
Each Add'l Family Member	\$31.00	\$35.00
Single	\$70.00	\$105.00
Child – 4 and under	\$40.00	\$45.00
Daycare Provider	\$35.00	\$35.00

½ price passes to begin 8/1/22

<b>DAILY PASS</b>	<b>RESIDENT</b>	<b>NON-RESIDENT</b>
Adult	\$5.00	\$7.00
Child	\$4.00	\$5.00
Shower Only	\$2.00	\$3.00
<b>Special Group Rate*</b>		
Adult	\$5.00	\$6.50
Child	\$4.00	\$4.50
Lessons (Child- per lesson)		\$3.00

\*As determined by Village Staff

<b>SWIMMING LESSONS</b>	<b>WITH PASS</b>	<b>WITHOUT PASS</b>
Preschool – Level 6	\$20.00	\$45.00

<b>SWIM RECREATION PROGRAMS</b>	<b>RESIDENT</b>	<b>NON-RESIDENT</b>
Splash-Splash	\$25.00	\$30.00
Adult Water Aerobics	\$45.00 / \$3.00 Session	\$50.00 / \$4.00 Session
Early Bird Lap Swim	\$45.00 / \$3.00 Session	\$50.00 / \$4.00 Session
Swim Team	\$60.00 (Village Portion)	

Birthday Bubbles

2 Hours / \$100.00\*

\*Staff is authorized to increase fee should additional guards be required due to number of attendees.

**PARK / RECREATION PROGRAMS**

	<b>RESIDENT</b>	<b>NON-RESIDENT</b>		
3 <sup>rd</sup> – 8 <sup>th</sup> Grade Baseball and Softball	\$65.00	\$75.00		
2 <sup>nd</sup> Grade Baseball and Softball	\$35.00	\$40.00		
Minor League Baseball/Softball (K-1 Grade)	\$30.00	\$35.00		
Blast Ball (3-4 Year Old's)	\$30.00	\$35.00		
Ride and Slide	\$25.00	\$30.00		
Park Reservation Fee	\$35.00	\$50.00		
Men's Softball		\$150.00 per team		
Coed Kickball		\$150.00 per team		
Coed Sand Volleyball		\$100.00 per team		
Triathlon	Prior to Event	Splash/Dash-\$25.00	Individual-\$60.00	Team-\$80.00
	Day of Event	Splash/Dash-\$30.00	Individual-\$75.00	Team-\$85.00
Sport Camps		Daily Park Usage Fee plus Additional Costs		
Sport Leagues (not operated by Village)		\$230.00 per league		
Tournaments (Hosting)		\$75.00 includes concession stand. Plus all other necessary license fees.		
Late Fee:	a late fee of \$20.00 will be added to 3-8 <sup>th</sup> Grade Softball and Baseball after deadline listed in the brochure.			

AND DOES FURTHER RESOLVE that all fees shall be paid to the New Glarus Village Treasurer prior to the start of the program.

AND DOES FURTHER RESOLVE that adult shall be defined as an individual having graduated from High School, having completed the equivalent of K-12 education, or 18 years of age;

That family shall be defined as no more than two adults living together and their natural, adopted or foster children whether living with parent or not. If families have a summer daycare provider, they may add that person to their family pass for an additional \$15;

That all season pass fees shall be paid to the New Glarus Village Treasurer before beginning swimming lessons and/or prior to the use of the pool;

Any cancellation made after the registration deadline is subject to a \$5.00 surcharge. No refunds will be given after the first session or practice has taken place, other than in the case of a severe illness or injury that prevents participation. Full refunds will be given for all programs cancelled by the Village. Refunds will be made by check and mailed to the address provided on the registration.

Group discounts information can be obtained at the Village Offices.

DATE PRESENTED: \_\_\_\_\_

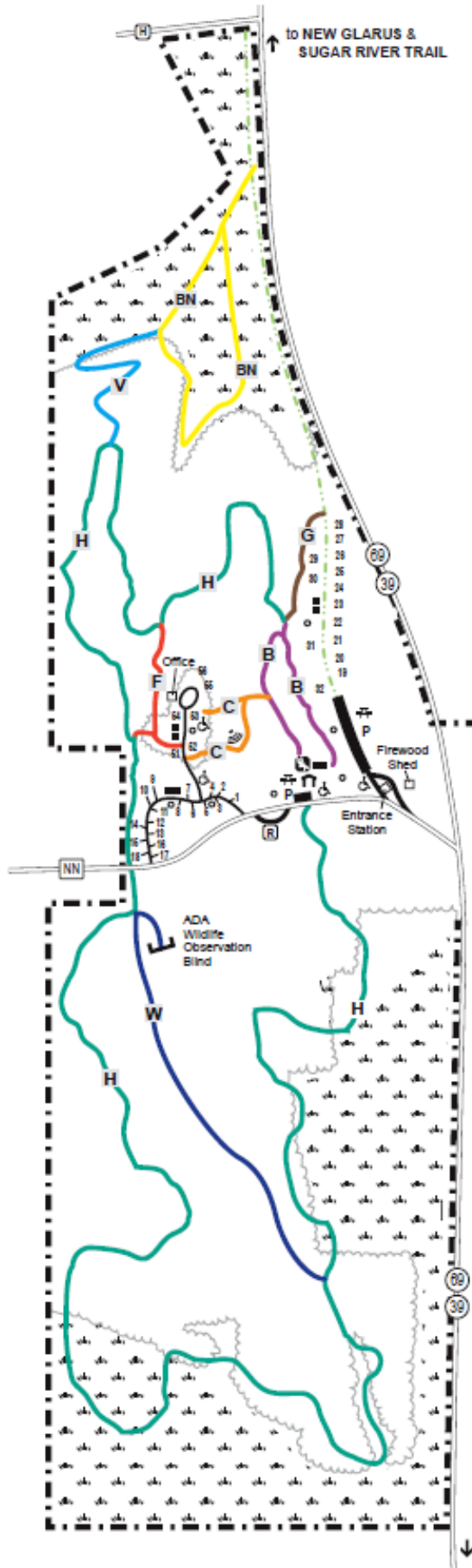
ADOPTED: \_\_\_\_\_

\_\_\_\_\_  
Roger Truttmann, President

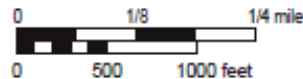
\_\_\_\_\_  
Lynne R. Erb, Clerk

# New Glarus Woods State Park

W5508 Cty Hwy NN  
 New Glarus, Wisconsin 53574  
 (608) 527-2335  
 LAT: N42.7870, LONG: W089.6295



- ▬▬▬▬ Park Boundary
  - P Parking
  - 🏠 Shelter
  - 🍴 Picnic Area
  - 🚻 Toilet Buildings
  - ⦿ Water Fountain
  - ♻️ Recycling Station
  - 🎪 Chattermark Amphitheater
  - ♿ Accessible
  - 🎡 Playground
- 
- Campgrounds
  - Accessible Campsites: 4, 53
  - Drive-in Campsites: 1-18
  - Walk-to Campsites: 19-32
  - Group Campsites: 51-56
- 
- You Are Here
- Trails
  - B Basswood Nature Trail - 0.4 miles
  - BN Bison Nature Trail - 0.8 miles
  - C Chattermark Trail - 0.1 miles
  - F Fox Trail - 0.2 miles
  - G Great Oak Trail - 0.2 miles
  - H Havenridge Nature Trail - 4.2 miles (Guidebook Available)
  - V Vista Trail - 0.4 miles
  - W Walnut Trail - 0.5 miles
  - Sugar River Trail Spur - 1.6 miles
- 
- 🌾 Prairie Habitat
  - 🌲 Woods

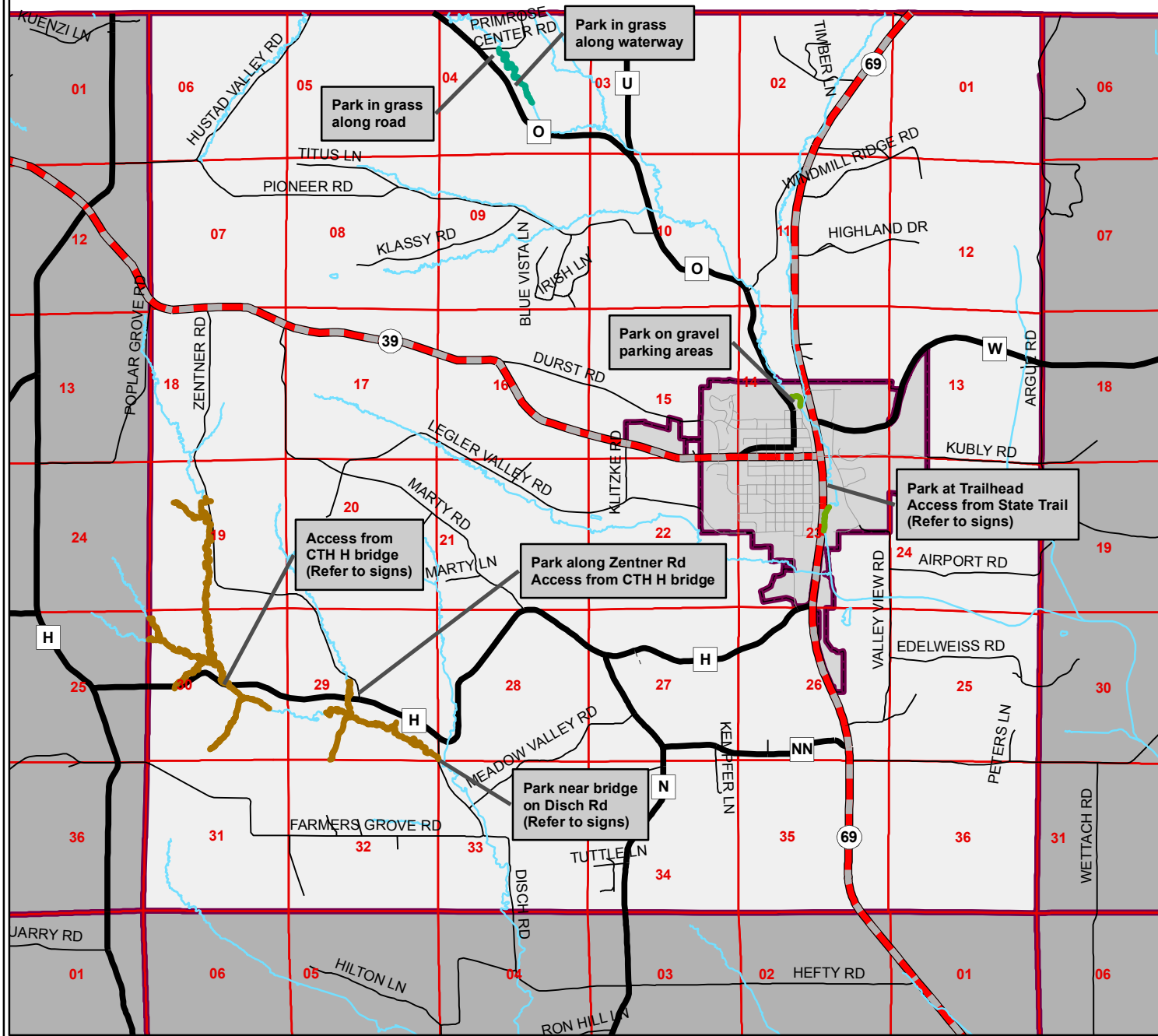
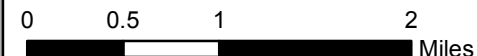


↓ to MONTICELLO & MONROE

<b>Date</b>	<b>Topic</b>	<b>Presenters</b>
10/4/2007	Natural History of New Glarus	Mike Anderson, BioLogic Environmental Consulting, LLC, Duane Freitag, New Glarus Historical Society, and Carroll Schaal, Blue Mounds Area Project
11/8/2007	Preserving and Restoring Your Property	Darcy Kind, Wisconsin Department of Natural Resources, Mike Anderson, BioLogic Environmental Consulting, LLC, and Chuck Bauer, local prairie owner
2/7/2008	Creating Wildlife Habitat with Native Landscaping	Susan Carpenter, UW Madison Arboretum and Chris Kaplan, Tallgrass Restoration, LLC
3/6/2008	Suburban Gardening/Rain Gardens and Rain Barrels	John Gishnock III, owner of Formecology, Steve Arnold, Sustain Dane
10/9/2008	Preserving Your Family Lands, Part 1	Pam Foster Felt, Gathering Waters Conservancy and Doug Cieslak, Driftless Area Land Conservancy
10/16/2008	Preserving Your Family Lands, Part 2	Attorney Johanna Alex, Christenson and Alex Law Office, Tenny Albert, independent appraiser, and Ken Powell Jr., owner of Powell Farm and Prairie
12/7/2009	Conservation Planning Workshop	Mark O'Leary, Applied Ecological
2/26/2010	Bluebirding in Wisconsin	Dr. Kent Hall, Bluebird Restoration Association of Wisconsin
10/20/2011	Raptor Workshop	Dianne Moller, Hoo's Woods Raptor Center
5/3/2012	Barn Preservation Workshop	Jerry Apps, author and Professor Emeritus
4/8/2013	Tree Workshop	Cory Secher, Forester, Department of Natural Resources Lauren Meinert, Zweifel Construction and Kim Tschudy, historian
9/15/2013	Barn Renovation Workshop	Cory Secher, Forester, Department of Natural Resources and Dr. Bob Beck and Pat Holstrom
4/22/2015	Bees and Trees Workshop	Tom Mitchell, Prairie Enthusiasts, Steve Fabos, Indigenous Restorations
5/14/2016	Prairie Restoration Workshop	Kim Tschudy, historian
11/11/2017	Bluebird House Construction Workshop	Dan Ziehlie, Wisconsin State Bee Inspector and Sugar River Beekeepers
2/3/2018	Beekeeping Basics Workshop	Katy Dickson, Christensen Farm
3/17/2018	From Farm to My Table	Kim Tschudy, historian
1/12/2019	Sesquicentennial Barns of Green County	Kelly Kearns, Department of Natural Resources and Mike Davis, Prairie Enthusiasts
4/7/2019	Invasive Species Workshop	Kim Tschudy, historian
12/1/2019	Bluebird House Construction Workshop	Andrew and Ethan Elkins
1/11/2020	River Tripping Workshop	Dan Ziehlie, Wisconsin State Bee Inspector and Sugar River Beekeepers
3/21/2020	Beekeeping Basics Workshop	Andrew and Ethan Elkins
4/18/2020	River Tripping Workshop	

While fishing/streams is not directly related to the CORP as it is not an amenity the Town has control of or manages this map is included as additional data.

# Town of New Glarus Stream Improvements Open to the Public



**Legend**

- DNR Improvement Class II Trout Stream
- DNR Improvement Class III Trout Stream
- Trout Unlimited Improvement Class II Trout Stream
- Streams
- Section lines



Source: Information for this map was obtained from the Wisconsin Dept. of Natural Resources Surface Water Viewer, Green County Land Information Dept., and the Town of New Glarus.







**From:** [David Long](#)  
**To:** [Clerk Treasurer](#)  
**Subject:** RE: Requesting a link for demographic data derived from 2020 decennial census  
**Date:** Tuesday, July 26, 2022 12:14:15 PM

---

Sure thing!

---

**From:** Clerk Treasurer <clerk@townofnewglaruswi.gov>  
**Sent:** Tuesday, July 26, 2022 12:10 PM  
**To:** David Long <david.long@wisc.edu>  
**Subject:** RE: Requesting a link for demographic data derived from 2020 decennial census

Dave,

Thanks. I am writing multiple meeting minutes in advance of the Partisan Primary on August 9<sup>th</sup>, so I hope to explore these links when time allows. If I still have questions, I will get back with you for more assistance.

Many thanks for your detailed and timely response.

John

John Wright  
Town of New Glarus Clerk-Treasurer  
(608) 527-2390

---

**From:** David Long <[david.long@wisc.edu](mailto:david.long@wisc.edu)>  
**Sent:** Tuesday, July 26, 2022 12:07 PM  
**To:** Clerk Treasurer <[clerk@townofnewglaruswi.gov](mailto:clerk@townofnewglaruswi.gov)>  
**Subject:** RE: Requesting a link for demographic data derived from 2020 decennial census

Hi John,

This link shows the Town of New Glarus tables that derived from the 2020 Census:

<https://data.census.gov/cedsci/table?q=New%20Glarus%20town,%20Green%20County,%20Wisconsin&y=2020&d=DEC%20Redistricting%20Data%20%28PL%2094-171%29&tid=DECENNIALPL2020.P4>

And this one shows the 2020 5-year ACS "profile" tables:

<https://data.census.gov/cedsci/table?q=New%20Glarus%20town,%20Green%20County,%20Wisconsin&y=2020&d=ACS%205-Year%20Estimates%20Data%20Profiles&tid=ACSDP5Y2020.DP04>

There are way more individual detailed ACS tables than this, but the profile tables are nice because they pull together a mix of commonly used data related to a theme.

Let me know if you have any questions.

Cheers,  
Dave

---

**From:** Clerk Treasurer <[clerk@townofnewglaruswi.gov](mailto:clerk@townofnewglaruswi.gov)>  
**Sent:** Tuesday, July 26, 2022 12:00 PM  
**To:** David Long <[david.long@wisc.edu](mailto:david.long@wisc.edu)>  
**Subject:** Requesting a link for demographic data derived from 2020 decennial census

Dave,

Thanks for your call back today and agreeing to share some strategies at efficiently deriving local, meaningful data.

Thanks,  
John

John Wright  
Town of New Glarus Clerk-Treasurer  
(608) 527-2390

### MAP LEGEND

**TRAILS**

- Rail Grade Trails
- Club Trails
- Dead End to Business
- Trail Dependent on Crops
- Trail Names
- Argyle Trail Buxters' Proposed Trail

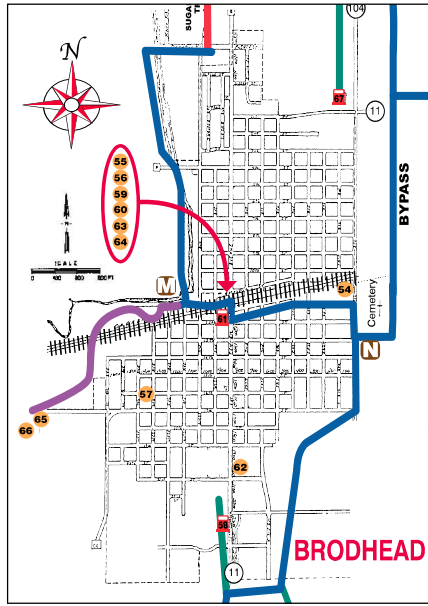
**BUSINESSES**

- Business Marker
- Business with Fuel

**INTERSECTIONS**

- Intersection Marker

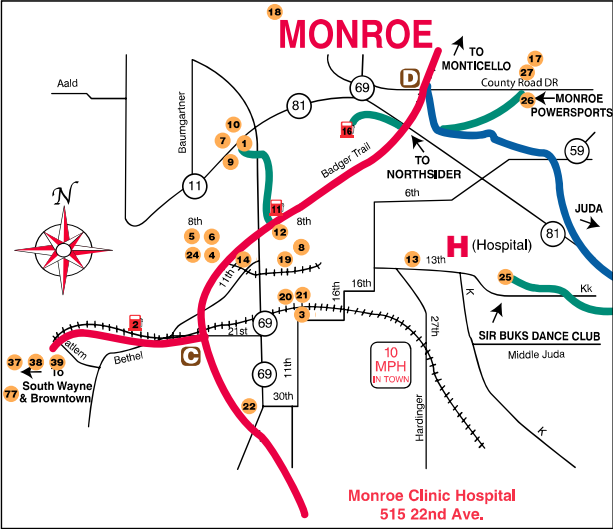
Please Support Our Sponsors



Wisconsin DNR  
Nonresident Snowmobile Trail Pass  
2017  
NONRESIDENT

VISIT THE DNR WEBSITE TO PRE-PURCHASE TRAIL PASSES:  
WWW.DNR.WI.GOV/PERMITS/SNOWTRAILPASS.HTM

Wisconsin DNR  
Resident Snowmobile Trail Pass  
2017  
WI RESIDENT



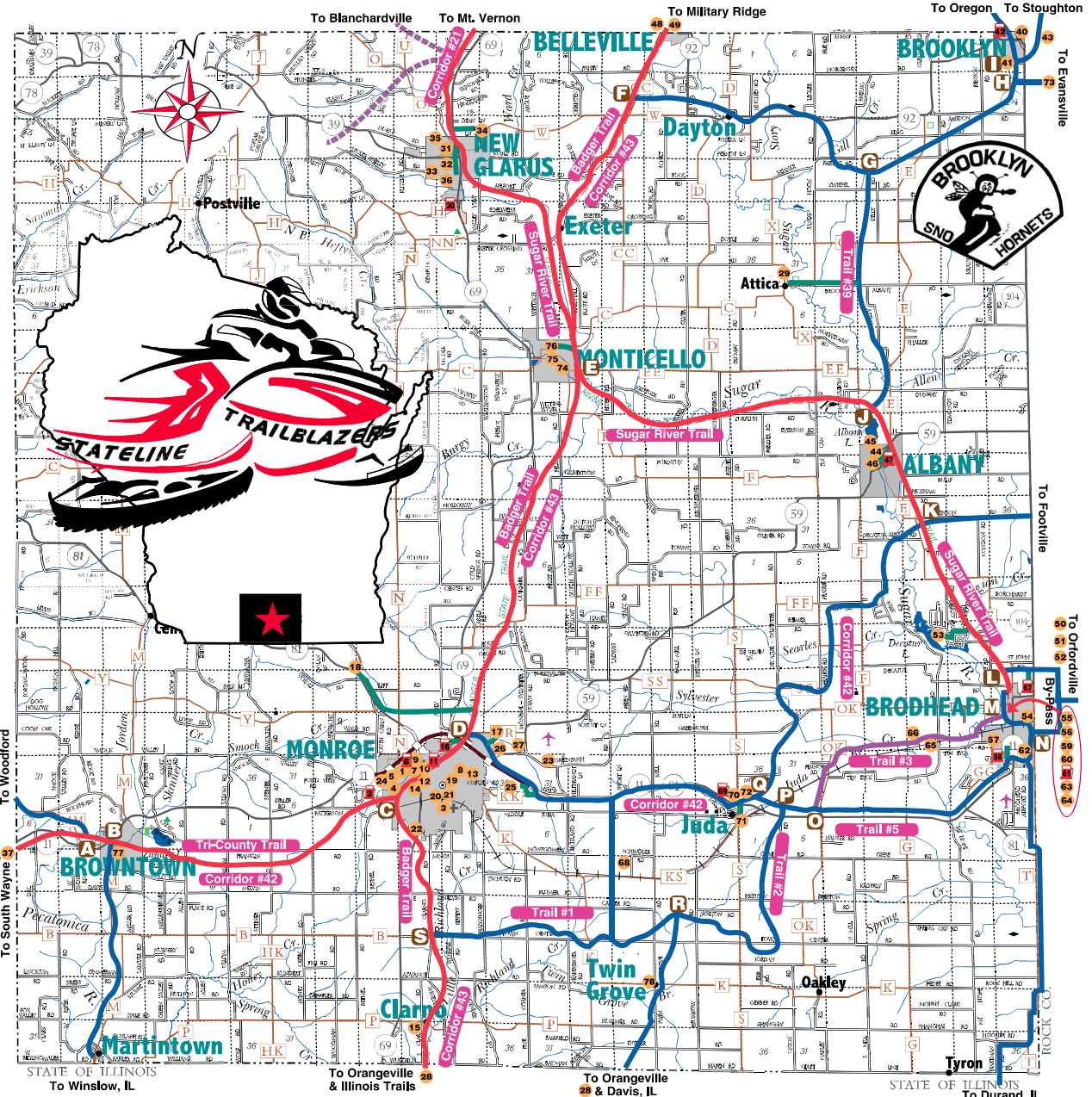
See larger, more detailed city maps for more exact location of business numbers.

NIGHT TIME SPEED LIMIT  
**55 MPH**  
STAY ON THE TRAIL OR STAY HOME

Businesses, listed below, in Orange Indicate the Business is Not Directly on Trail.

- |                          |                               |                                   |                              |                              |                            |                                     |                           |                               |                                 |
|--------------------------|-------------------------------|-----------------------------------|------------------------------|------------------------------|----------------------------|-------------------------------------|---------------------------|-------------------------------|---------------------------------|
| 1 AmericInn-Monroe       | 9 Super 8-Monroe              | 17 CT's Firearms & Archery        | 25 Sir Buks Bar & Dance Club | 33 Kennedy's Ice Cream/Grill | 41 Mortensen's Auto Repair | 49 The Dam Bar & Grill              | 57 Boettcher's Towing LLC | 65 Kubly's Automotive         | 73 Union Tavern                 |
| 2 Smart Ethanol          | 10 Vince's Restaurant & Pizza | 18 Junction House                 | 26 Monroe Powersports        | 34 Sugar River Powercenter   | 42 Brooklyn Mini Mart      | 50 Knutes                           | 58 Stop-N-Go              | 66 Menahan Refrig. AC/Heating | 74 Luckys Farm Tavern           |
| 3 Brandt Construction    | 11 Brennan's                  | 19 Flanagan's Shenanigans         | 27 Rufenacht Concrete        | 35 Sportsman's Bar & Grill   | 43 Dave's White Rock Bar   | 51 Stables Bar & Grill              | 59 Bank of Brodhead       | 68 Speich Oil, Inc.           | 75 Rath Skeller                 |
| 4 Monroe Mack Service    | 12 Colony Brands              | 20 Old Smokey Bar                 | 28 Glarner Bier Haus         | 36 Glarner Bier Haus         | 44 Clayton's Corner Bar    | 52 Villa Pizza-Orfordville          | 60 Bridges Bar & Grill    | 67 Rackow Family Sausage      | 76 Eagle Pass Saloon            |
| 5 Culver's - Monroe      | 13 Paw Prints                 | 21 Friendly Inn Bar & Grill       | 29 Attica Incorporated Bar   | 37 Marty's Village Inn       | 45 Albany Tire & Auto Body | 53 Billy's Sandtrap                 | 61 Trackside Mini Mart    | 70 Olin's Juda Oasis          | 77 The Bullpen Bar/Grill/Sports |
| 6 Phillip's 66 - Kundert | 14 Precision Drive & Control  | 22 Gasthaus Motel                 | 31 New Glarus Cenex          | 38 South Wayne Mart          | 46 Brewer's Center Tavern  | 54 Schlitter Construction Co., Inc. | 62 Sugar River Bank       | 71 La Igwana Restaurant       | 78 Twin Grove Stage Stop        |
| 7 Laughing Trout         | 15 Clarno Lumber & Supply Co. | 23 Douglas S. hMayer Transport    | 32 Puempel's Olde Tavern     | 39 The Vault                 | 48 The J&M Bar             | 55 Payne's Pub                      | 63 fibs north             | 72 T&T Last Chance Saloon     |                                 |
| 8 Bartels Tap & Co.      | 16 Monroe Northsider          | 24 Discount Am, Hobby/Motorsports | 42 Kleeman's-New Glarus      | 40 Anchor Club               |                            | 56 M & J's Bar/Grill/Pizza          | 64 Villa Pizza-Brodhead   | 73 Maple Leaf Cheese Store    |                                 |

Patronize and Thank These Businesses for Making This Map Possible!



## Green County Wisconsin • Oh, What Fun It Is To Ride ...

**From:** [Clerk Treasurer](#)  
**To:** [Arianna Voegeli](#)  
**Cc:** [Harry Pulliam](#)  
**Bcc:** [Chris Narveson](#)  
**Subject:** RE: Renewed discussion of a County park  
**Date:** Thursday, August 4, 2022 6:11:00 AM

---

Arianna,

Many thanks for your response and presenting the concept to the appropriate body for consideration.

John

John Wright  
Town of New Glarus Clerk-Treasurer  
(608) 527-2390

---

**From:** Arianna Voegeli <[avoegeli@greencountywi.org](mailto:avoegeli@greencountywi.org)>  
**Sent:** Wednesday, August 3, 2022 2:08 PM  
**To:** Clerk Treasurer <[clerk@townofnewglaruswi.gov](mailto:clerk@townofnewglaruswi.gov)>  
**Cc:** Harry Pulliam <[hfpulliam@gmail.com](mailto:hfpulliam@gmail.com)>  
**Subject:** RE: Renewed discussion of a County park

I will take this to the next property meeting (likely next week sometime) to see if they have any interest in pursuing discussions on this.



**Arianna L. Voegeli**  
**Green County Clerk**  
**Administrative Coordinator**  
Green County Clerk's Office  
1016 16th Ave  
Monroe, WI 53566  
**P:** (608) 328-9430 | **F:** (608) 328-2835  
[www.greencountywi.org](http://www.greencountywi.org)  
[www.elections.wi.gov](http://www.elections.wi.gov)

**Upcoming Elections:**  
August 9, 2022 – Partisan Primary  
November 8, 2022 – General Election

---

**From:** Clerk Treasurer <[clerk@townofnewglaruswi.gov](mailto:clerk@townofnewglaruswi.gov)>  
**Sent:** Wednesday, July 27, 2022 9:02 AM  
**To:** Arianna Voegeli <[avoegeli@greencountywi.org](mailto:avoegeli@greencountywi.org)>  
**Cc:** Harry Pulliam <[hfpulliam@gmail.com](mailto:hfpulliam@gmail.com)>  
**Subject:** Renewed discussion of a County park

**CAUTION:** This email originated from outside of the organization. Do not click links or open attachments unless you recognize the sender and know the content is safe.

Arianna,

When I served the Town of New Glarus from 2006 until 2011, our Parks Commission proposed a county park

in the north part of the County for the growing communities of Exeter and New Glarus. It was noted at the time that Green County managed the park at the intersection of CTH N and STH 81, two boat launches, and the Muralt Bluff Prairie.

Green County Clerk Mike Doyle was not interested in supporting an additional county park at that time he was approached in 2009, but 13 years have passed since the concept was originally proposed. Our Parks Commission is interested in renewing the discussion if and when you have time available to discuss the concept.

Many thanks,  
John

John Wright  
Town of New Glarus Clerk-Treasurer  
(608) 527-2390

**Town of New Glarus  
Parks Commission Meeting  
Thursday, March 12, 2009  
7:00 PM**

Attendance: Rita Mahoney, Russ Whitacre, Chuck Sasso, Karen Talarczyk, Chris Narveson, and Pete Shaffer

Not in Attendance: Nancy Galhouse

Also in Attendance: Cara Carper and Pete Raskovic

Meeting called to order by R. Whitacre at 7:03 PM.

1. Proof of posting was duly noted by the Chair and Deputy Clerk.
2. Approve Regular Minutes (2/05/09). R. Mahoney made a motion to approve the minutes as presented; second K. Talarczyk. The minutes of 2/05/09 were approved unanimously as presented.
3. Spring Clean-Up Discussion. Kubly Road was proposed as a road to focus on, although it was noted that it is short in length and is partially within the Village of New Glarus. Marty Road was discussed and it was noted that more people outside the community travel along it because of its Rustic Road status. It was agreed that this road will be the focus for this year's clean-up. Chair Whitacre asked where crews should assemble to which P. Shaffer replied first at the Town Office parking lot located at 1101 Highway 69 to then drive to the intersection of Legler Valley Road and Marty, with one crew working to the south and east and the other to the north and west. The clean-up is scheduled for Saturday, April 25, 2009 between ten and noon. R. Whitacre noted that the Commission still had trash bags from the previous year. The remaining tokens donated by Culvers in 2008 had been returned by member N. Galhouse so Chair Whitacre agreed to request some for this year's event.

R. Mahoney asked who else will be contacted to participate in the event. C. Narveson agreed to contact the FFA through his daughter and Deputy Clerk Wright was requested to contact his daughter's Girl Scout Troop leader. Other groups mentioned were students in need of Community Service hours, Boy Scouts, and other service organizations. R. Mahoney agreed to request the safety vests and pick-up sticks from the Parks Ranger at the New Glarus Woods State Park.

There was a brief review of last year's press release with various recommended updates and changes to reflect the current focus. Mahoney will submit the press release for publication on April 17, 2009. Wright agreed to contact the Route Manager at Waste Management for a special pickup of the collected trash at the Town Garage on Railroad Street.

4. Arbor Day Participation Discussion. Chair Whitacre noted that he did not assist with this event in 2008. Arbor Day is Friday, April 25, 2009. Mahoney explained that the Village Arborist Paul Jennrich is the recipient of the check for trees to be purchased. She went on to note that Carol Holmes (former Commission member) had attended the early morning preparation as a way to meet other members of the community with similar concerns. R. Mahoney made a motion to spend up to \$300 payable to the Village Arborist to participate in Arbor Day event with the Village of New Glarus; second K. Talarczyk. There was no further discussion. Motion carried. Russ Whitacre agreed to contact Mr. Jennrich about the arborist's recommendations and is authorized to order those items up to the \$300 limit. Whitacre will report on what trees were ordered at the April meeting.
5. Continue Discussion on Regional Meeting with Cara Carper. Russ Whitacre introduced Ms. Carper. Ms. Carper briefly described her role as a UW Extension agent for Green County for Community Development, Economic Development and Natural Resources. Carper shared a flyer representative of Extension programming from the New Rural

Landowners seminar that was held in 2006. Carper asked what it is she can do for the Town of New Glarus Parks Commission. R. Mahoney briefly reviewed surrounding communities who have websites and noted that only Perry in Dane County appears to have a Parks group. Mahoney continued that adjacent communities are of the most interest for discussing shared concerns, linking trails, and possibly a regional park.

K. Talarczyk shared information about a speaker from a dozen years ago who appeared at the local high school. This individual spoke about developing a regional plan which would require inventorying existing assets. R. Mahoney wanted to find out what would be required to petition for a county park here or nearby. Carper thought that Smart Growth Plans could be reviewed to find out available resources and future plans.

R. Mahoney reviewed the workshops that had been hosted by the Town of New Glarus Parks Commission. Ms. Carper asked for this group to consider organizing similar workshops for other communities. Mahoney noted that information for land trusts is more community-oriented and as such is not easily adapted on a regional level. R. Whitacre summarized the goals of the Parks Commission including: recreational opportunities, walking trails, biking trails, and acquisition of land to support those goals. Carper asked if the Town Parks Commission desired to be the center of this effort or if they preferred UW Extension to fulfill that role instead. Deputy Clerk Wright asked if there were other Extension representatives in Dane County that can be contacted about regional interest or other communities who have successfully conducted regional meetings. Ms. Carper agreed that she had counterparts in Dane County. She mentioned Jefferson County as a successful example of a community who used the assistance of UW students to link existing parks with bike trails between communities.

Pete Raskovic, a local landowner in the audience, volunteered to contact a resource in Pennsylvania who is assisting with a local university to see what he might recommend. R. Mahoney recounted a prior discussion she had with Angie Wright. Carper agreed to find out more about funding possibilities and others who have succeeded in acquiring easements from adjacent property owners. Carper will be gone starting tomorrow but will report back approximately a week from tonight.

6. Discussion Regarding Barn Preservation. Town Board member Chris Narveson had requested that the Parks Commission discuss this idea put forth by local resident Pete Raskovic by adding it to this month's agenda. Mr. Raskovic agreed to attend this evening and to present some information via PowerPoint. Pete works for the school district in Beloit and owns a local farm on County Highway H. He is originally from eastern Pennsylvania where his grandfather operated a dairy farm.

Raskovic spoke about the need for regional planning to avoid overdevelopment of family farms and their associated historic structures. Raskovic shared his opinion through slides regarding the importance of preserving the local history through the land and agricultural architecture. Raskovic sees agritourism as a viable future option for local citizens to generate income while preserving local history. Raskovic would like to see ordinances enacted that require maintaining the local aesthetic. In addition to this proposed legislation he would also like an architectural/historical control committee to be established to assist with restoration. This committee could also act as a clearinghouse for resources, links, and grants to assist in this effort.

Raskovic stated that he is not opposed to the converted use of agricultural buildings as homes, apartments or other business, yet would like the establishment of a uniform set of building and appearance codes to preserve their historical appearance. Mr. Raskovic further advocated for town-held, not privately-held, deed restrictions for such renovations. The presentation concluded with a list of current resources including: Barn Again, Barn Quilts of Green County, and [www.thebarnjournal.org](http://www.thebarnjournal.org). The members present thanked Mr. Raskovic for his informative presentation.

7. Updates

- a. Website. P. Shaffer stated that he had been in contact with Eileen Horn and had added a few items in addition to some information from C. Sasso. R. Whitacre noted that he has not yet completed the statement under the **Welcome** heading that he had previously agreed to write.
  - b. Trails and bike trails. Chair Whitacre had his slideshow available to share from his visit to Switzerland and their trail system; however, because of time restraints it was agreed to carry this presentation forward to next month's agenda, without objection.
8. Approve Final 2008 Budget to Actual with Discussion of 2009 Budget Amendments. The members reviewed the figures for 2008 expenses paid in 2008, those paid in 2009, and those yet to be paid. The unused portion of the 2008 budget was calculated to be \$1,555.96. R. Mahoney reminded the group that last year's request to add unused monies to the Town Hall/Town Park Sinking Fund, although approved by two of the three Town Board members, was opposed by Chair Seward because he did not want to set a precedent. Wright reminded the group that the Town Board released Parks Funds earmarked for other items in order to purchase the digital projector after the grant proposal for the same was not funded by the Community Foundation.

After discussion, C. Narveson made a motion to request that the Town Board add the unused portion of the 2008 budget for the Town Hall/Park Sinking Fund. Wright noted that prior to considering this motion, a separate motion was required to accept the budget to actual figures prepared by Wright and Salter. Narveson withdrew his motion. K. Talarczyk made a motion to approve the budget to actual figures as presented; second by C. Narveson. There was no further discussion. Motion passed. R. Mahoney noted that the figures that Wright presented to arrive at the amount of money remaining in the 2008 budget did not accurately reflect the budget lines from which the actual expenses were to be drawn. After extensive discussion Mahoney agreed to create a budget-to-actual document to be presented at the April meeting.

There was discussion regarding the proposed amendment by Clerk/Treasurer Salter to the 2009 budget. Salter had proposed moving the \$300 for Arbor Day participation currently in the **Community Projects Sinking Fund** into the **Trail Development Expenses** budget line instead. Deputy Clerk Wright could not provide the members present with a definitive reason why the request had been made based on his discussions with Salter. Wright's impression was that accessing money from the Sinking Fund would require a separate item on the Town Board agenda for approval and that it would be a more complex process than a simple request to approve the check itself out of a regular budget line. After additional discussion it was decided to not approve the recommended amendment to the 2009 budget.

Chair Whitacre proposed that he be allowed to request that the Town Board adopt a resolution for the two Sinking Funds as originally presented in the 2009 budget; without objection.

9. Continue Discussion on Land Availability Research. Chair Whitacre reported that he met with Town of New Glarus Chair Keith Seward this morning to discuss the Babler property on County Highway NN and the Shooting Barn property of 4.76 acres in size located north of the Village on County Highway O. According to Whitacre Seward did not make any specific comment to suggest that the Town would consider purchasing either property.
10. Membership. Chair Whitacre read aloud the resignation letter he received by email from Nancy Galhouse. The members expressed appreciation for the contributions made by Ms. Galhouse. The members noted that they will need to find interested individuals to express their interest to the Town Board to fill the vacancy by appointment created by her resignation.
11. Public Comments. Notification of a conference to be held in Phillips, Wisconsin on April 4, 2009 was included in the members' packet, but was not discussed due to time



constraints. The conference is entitled **Northcentral Wisconsin Land Stewardship** and is sponsored by the University of Wisconsin Extension Offices, Land Conservation Departments, and Department of Natural Resources.

12. Schedule Next Meeting and Agenda Items. It was agreed that the next meeting will be Thursday, April 9, 2009 at 7 PM. The agenda will include: Spring Clean-Up; Arbor Day Participation; Membership; Regional Meeting; Trails and Bike Trails, Approval of 2008 Budget to Actual; Land Availability; and Updates: Website.

C. Sasso made a motion to adjourn; 2<sup>nd</sup> R. Mahoney. Motion carried. The meeting was adjourned at 9:40 PM.

Revised 090408