

TOWN OF NEW GLARUS

PARKS COMMISSION MEETING 21 SEPTEMBER 2022, 6:00 PM AGENDA

NOTICE IS HEREBY GIVEN that Town of New Glarus Parks Commission, County of Green, will conduct a meeting for the transaction of business as is by law required permitted at such meeting as follows:

LOCATION: New Glarus Town Hall
26 5th Avenue
New Glarus, WI 53574

Note: Due to COVID-19 protocols, Town of New Glarus Parks Commission meetings will continue to have a virtual option.

Zoom Link: <https://us06web.zoom.us/j/87072418842?pwd=RElJeHlMUXdaSCtGRFN6U21rVnJHQT09>

Meeting ID: 870 7241 8842 Passcode: 004650 Dial by your location: +1 312 626 6799 US (Chicago)

AGENDA:

1. Call to Order
2. Proof of Posting
3. Approve August 17, 2022, Meeting Minutes – Confirm Mark’s motion to amend July minutes and the position of that amendment in the document.
4. Public Comments
5. Discuss September 14, 2022 Presentations of CORP Update to Town Board– Harry
6. Review Changes to CORP Update Offered by Plan Commission, Including Addition of Adult Recreation Center to Goals – Harry
7. Discuss Prairie Workshop – Dana
8. Discuss Seeding of Prairie Plants at Blue Bird Ridge Conservancy after Fall Burn – Dana
9. Continue Discussion of Seeding 7.9 Acres of Town-Owned Land Along Durst Road with Pollinator Mix – Chris
10. Continue Discussion of Controlled Burn/Invasive Species Workshop and Possible Locations – Jason
11. Continue Discussion of 2-4 PM, April 8, 2023, River Tripping Workshop – Mona Sue
12. Discuss Decision of Green County Property, Parks, and Insurance Committee Regarding County Park in New Glarus/Exeter Area
13. Discuss Possible Fall 2022 eCycle Event
14. Discuss Fall 2022 Tree Sale
15. Schedule Next Meeting October 19, 2022
16. Adjourn

Posted: 9/15/2022

New Glarus Town Hall
New Glarus Garage
New Glarus Post Office

<https://townofnewglarus.com/>

Harry Pulliam, Chair
New Glarus Parks Commission

John Wright, Clerk-Treasurer

Pursuant to applicable law, notice is hereby given that a quorum or a majority of the New Glarus Town Board or Plan Commission Members may attend this meeting. Information presented at this meeting may help form the rationale behind future actions that may be taken by the Town of New Glarus Board. Persons requiring additional services to participate in a public meeting may contact the Town Clerk for assistance at 527-2390.

PARKS COMMISSION MEETING

Wednesday, August 17, 2022

Minutes

Attending: Chair Harry Pulliam, Kelly Ruschman, Mark Pernitz, Mona Sue French, Dana Emmerton, Chris Narveson, and Jason Neton (arrived at 6:05 PM and departed at 7:55 PM)

Absent: none

Also Attending: Jay Brooks: resident at N7941 CTH N (departed at 7:18 PM)

1. **Call to Order:** Meeting was called to order by Chair Pulliam at 6:00 PM.
2. **Proof of Posting:** Clerk-Treasurer Wright attested to proper proof of posting.
3. **Approve Minutes**
 - a. July 20, 2022, Parks Commission meeting minutes: A motion to approve the minutes was made by Commissioner Ruschman; second by Commissioner Narveson. Commissioner Pernitz offered an amendment to the motion to approve for the minutes to indicate the attendance of Jim Hoesly and Brian Aebly as virtual; second by Commissioner French. Amendment carried, 7-0. Commissioner Pernitz offered a second amendment to the main motion: the minutes should reflect that of the respondents to the survey, trails that connect the Village to the Town had the most number of residents voting very interested and somewhat interested. And while trails had the most number of people registering opposition, that was only fourteen people; second by Commissioner French. Amendment carried, 7-0. Main motion carried for approval, 7-0.
 - b. July 20, 2022 workshop minutes: A motion to approve the minutes was made by Commissioner Pernitz; second by Commissioner Neton. Chair Pulliam offered an amendment to the motion for the workshop minutes to indicate that the taking of any land by the Town by means of eminent domain for the creation of trails has never been on the table as an option (with correction of the spelling eminent); second by Commissioner Pernitz. Motion to amend the main motion carried, 7-0. Main motion to approve the minutes, as amended, carried 7-0.
4. **Public Comments:** Resident Jay Brooks is interested in finding out more information regarding controlled burns and prairie restoration efforts. Commissioner Narveson stated that Green County Highway Department is looking to relocate their local facility from 2nd Street. County is currently seeking property appropriate for a new public works campus. It is possible that such a facility be developed jointly with the Town and possibly the Village of New Glarus. It was noted that the current Town Public Works facility does not include a location to drop off or process woody waste. Narveson noted that when the Town relocates its public works facilities, it will need a minimum of five acres of land and a salt shed.
5. **Discuss Prairie Workshop:** Commissioner Emmerton made the group aware of mitigating circumstances that have affected progress on this proposed workshop. Commissioner Neton recounted a prior discussion regarding land recently added to the Driftless Land Conservancy known as the Spring Valley Tract just north of New Glarus. Neton thought that Fil Sanna may be willing to be a guest speaker at the prairie workshop in addition to

one on invasive species (see below). Commissioner Emmerton also envisions the prairie workshop as a means to educate the public about how to identify native species as well as how to encourage their propagation. February or March of 2023 was discussed as a possible timeframe for the workshop.

6. **Discuss Seeding of Prairie Plants at Blue Bird Ridge Conservancy (BBRC) after Fall Burn:** Commissioner Emmerton reported that she has spoken to Tom Mitchell, Secretary for the Prairie Enthusiasts in the past but not recently. Chair Pulliam briefly enumerated the steps required prior to the burn. Pulliam described efforts by the owner of an adjoining property to the BBRC to control invasive species. Emmerton will reach out to Tom Mitchell to coordinate a date for the burn.
7. **Discuss Seeding 7.9 Acres of Town-Owned Land Along Durst Road with Pollinator Mix:** Commissioner Narveson reported that Town Supervisor Troy Pauli has prepared the site. The Town purchased a DOT seed mix but is waiting for rain to apply it. The land abuts Durst Road and will have four residential driveways with culverts that cross this conservancy land to access lots to the north. The Town agreed to take care of this parcel as part of a negotiated agreement with the Village of New Glarus based upon the Village's extraterritorial zoning authority in this area. Resident Jay Brooks noted that grants are available to help defray costs for prairie restorations.
8. **Continue Discussion of Controlled Burn/Invasive Species Workshop and Possible Locations:** Commissioner Neton reported that Matt Wallrath of the Upper Sugar River Watershed Association has agreed to deliver a presentation at this event along with Fil Sanna, mentioned in item 5 above. Tofflers Pub & Grill was discussed as a possible location to hold this event in late February in their upstairs event space. David Cordray from Environmental Returns, LLC was mentioned as a possible presenter as well. Neton reported that Fil Sanna and the Friends of the New Glarus State Woods will have a table with prairie restoration information set up at this year's Oktoberfest in New Glarus (September 22-25, 2022). Chair Pulliam thought the Parks Commission may want to consider a flyer to share at such events.
9. **Continue Discussion of 2-4 PM, April 8, 2023, River Tripping Workshop:** Commissioner French has no updates to share at this time. French encouraged the group to hold the workshop at the Town Hall Community Room so that the public in attendance become aware of the location for monthly Parks Commission meetings. Commissioner Ruschman is willing to help write content for the newsletter which Beth Karr has agreed to assist with formatting.
10. **Discuss Updated Comprehensive Outdoor Recreation Plan (CORP)**
 - a. Page 10, goal 2, #4 – Chair Pulliam recommends the removal of the fourth item about European-style walking paths. There was a discussion regarding the lack of a local or county requirement to dedicate land to the public for recreational purposes as a condition of residential development. Commissioner Narveson noted that Chapter 110 of the Town Land Division Code requires preservation of open space as a condition for development. Narveson stated that an amendment to Chapter 110 could be recommended by the Parks Commission to require some portion of open space for future developments be dedicated to the public. After further discussion it was agreed, without objection, to strike the fourth item of goal #2 as its removal does not eliminate the goal to develop trails.

- b. Revisions to map of potential trails – Chair Pulliam referred the members to Figure 11. The proposed trail along County Highway O (marked as 4) and along Pioneer Road (marked as 5) were reviewed. It was noted that if a trail were constructed within the road right-of-way, then reluctance to grant easements on private property would be moot. There followed a brief discussion of possibly rerouting CTH NN to avoid passing through the New Glarus Woods State Park or terminating the road in a cul-de-sac with a focus instead upon improving County Highway H to the north. Commissioner Pernitz recommended adding to Table 3 the following potential future trails of medium priority: along CTH H between State Highway 69 and CTH N and along CTH N between CTH H and Tuttle Lane. Commissioner Narveson recommended adding to Table 3 the following potential future trails of medium priority: along Klitzke Road between STH 39 and Legler Valley Road; and along Legler Valley Road between Klitzke Road and the Village of New Glarus corporate limits to the east. Distances will need to be calculated for these segments.
- c. Traffic delineator posts – Commissioner Narveson noted that the posts would need to be removed during plowing season. Rumble strips would be an alternative to make vehicular traffic aware of where the trail delineation is located.
- d. Potential for Town’s purchase of tennis courts – Chair Pulliam noted that this was discussed previously. If both courts are available for purchase and rebuilt, then alternate stripes could be added for four pickleball courts and the striping reapplied for the two existing tennis courts. Commissioner Pernitz recommended that the matrix entitled *Town of New Glarus CORP Recommendations* include a new G1 goal strategy: *Explore property for potential tennis/pickleball courts* with an ongoing time frame and the Parks Commission as the Responsible Party; without objection.

Commissioner Emmerton thought a new Goal G1 should be added: *Continue to explore the possibility of an ice-skating rink* with an ongoing time frame and the responsible parties comprised of Parks Commission, Joint Parks Commission, Town Board, Village Board; without objection.

- e. Recommendation that the Town adopt an ordinance requiring trail easements when land divisions are considered – see discussion above under 10 a.
11. **Correspondence with Green County Clerk Arianna Voegeli Regarding a Possible County Park:** Green County Clerk Arianna Voegeli agreed to add this discussion topic to the next agenda for the Property, Parks, and Insurance Committee with possible action.
 12. **Schedule Next Meeting** – the next meeting will be held on September 21, 2022 at 6:00 PM. The next agenda should include discussion of any additional changes recommended by the Town Board and/or Plan Commission to the CORP, workshop updates, and approval of the August minutes.
 13. **Adjourn:** A motion to adjourn was made by Commissioner Pernitz; second by Commissioner Narveson. Motion carried 6-0 at 8:17 PM.

Approved:

Minutes by Clerk/Treasurer Wright

COMPREHENSIVE OUTDOOR RECREATION PLAN

Town of New Glarus 2022-2027 update



vierbicher
planners | engineers | advisors



ACKNOWLEDGEMENTS

We would like to thank the Parks Commission, the Plan Commission, the Town Board and Town Staff for their role in this Plan Process.

Town Board

Chris Narveson, Chairman
Matt Streiff
Troy Pauli
Jim Hoesly
Robert Elkins

Parks Commission

Harry Pulliam, Chairperson
Chris Narveson
Mona Sue French
Dana Emmerton
Jason Neton
Mark Pernitz
Kelly Ruschman

Plan Commission

Chris Nareveson, Chairperson
Robert Elkins
John Freitag
Craig Galhouse
John Ott
Reg Reis
Mark Pernitz

Town Staff

John Wright, Deputy Clerk-Treasurer
Ron Roesslein, Town Patrolperson

Comprehensive Outdoor Recreation Plan
prepared by:

Vierbicher
999 Fourier Drive Ste. 201
Madison, WI 53717
608.826.0532
www.vierbicher.com

Plan Adopted by Town Board on **Month XX, 2022**

©2022 Vierbicher

CONTENTS

| | |
|--|-----------|
| Introduction | 1 |
| Existing Conditions | 7 |
| Recommendations | 15 |
| Appendices | 20 |
| Appendix A – Community Survey Results | |
| Appendix B – Fee Resolution | |
| Appendix C – New Glarus Woods State Park | |
| Appendix D – Workshop Information | |
| Appendix E – Stream (Fishing) Map | |

Figures

| | |
|---|----|
| Figure 1: Raptor Workshop | 3 |
| Figure 2: Town of New Glarus Population Trends | 7 |
| Figure 3: Town of New Glarus Population Pyramid, 2020 | 7 |
| Figure 4: Village of New Glarus Future Land Use Map | 8 |
| Figure 5: Available Outdoor Recreation Opportunities | 9 |
| Figure 6: Green County On-road Bicycle Map | 10 |
| Figure 7: Population Density | 12 |
| Figure 8: Survey Results – Natural Surface Recreation Trails | 14 |
| Figure 9: Survey Results – Paved hiking/biking along roadway | 14 |
| Figure 10: Survey Results – Trails that connect the Town to the Village | 14 |
| Figure 11: Town of New Glarus Potential Future Trails | 17 |

Tables

| | |
|---|----|
| Table 1: Classification of Town of New Glarus Acreage | 7 |
| Table 2: Sample Recreation and Open Space Standards | 11 |
| Table 3: Potential Future Trails Information | 19 |



INTRODUCTION

INTRODUCTION

Purpose

Parks, recreation, trails, and open space are essential elements in the quality of life for all communities. Increased demand for recreational opportunities, including outdoor recreation, has led to increased pressure on existing recreational facilities. To meet this demand the community is expected to provide additional facilities or improvements that offer residents a wide range of quality recreational opportunities.

Therefore every five years, The Town of New Glarus updates their Comprehensive Outdoor Recreation Plan (CORP) as a tool for the community and to stay eligible for matching government funds for parkland and recreation improvements under Wisconsin Department of Natural Resources requirements.

The Town of New Glarus CORP is an expression of the community's goals and objectives for current and future needs for trails, parks, and open space. The intent of this document is to guide the continual improvement of the Town's trails, parks, and open space for local residents and visitors. The Parks Commission and Town Board shall make policy decisions for trails, parks, and open space based on this adopted plan. Actual implementation is contingent on funding sources, new opportunities, budget priorities and changing community needs and desires.

Statewide Comprehensive Outdoor Recreation Plan

The state is currently updating their 2017 – 2022 Wisconsin Statewide Comprehensive Outdoor Recreation Plan (SCORP). The primary actions for the 2017 – 2022 SCORP include collecting data on outdoor recreation preferences of Wisconsin citizens, updating data on the supply of outdoor recreation opportunities, with a focus on properties open to the public for nature-based outdoor recreation, and developing priorities for future recreation funding.

At its core, the SCORP is used to help allocate federal funds equitable among local communities, but the document also transcends many levels of outdoor recreation discussion and policy. – Wisconsin SCORP

Role of Parks, Recreation, and Trails

Parks, recreation, and trails shape community image, public health, and bring economic opportunity. Recreational opportunities provide individuals the possibility to socialize with other people. Open space also provides places for individuals to recharge mentally.

Tourism and Economic Impact

Trails and Greenways positively impact individuals and improve communities by providing not only recreation and transportation opportunities but also influencing economic and community development. Many of these benefits include:

- Making communities better places to live by preserving and creating open spaces.
- Encouraging physical fitness and healthy lifestyles.
- Creating new opportunities for outdoor recreation and non-motorized transportation.
- Strengthening local economies.
- Protecting the environment.
- Preserving culturally and historically valuable areas.

Various Studies demonstrate that parks and trails increase nearby property values and nearby businesses. Connecting residents and visitors to parks and recreational facilities and community facilities is important to encourage safe, alternative modes of transportation. The Town wishes to connect to the Village of New Glarus, nearby communities, and regional trails. This allows for residents to travel safely to locations outside the Town of New Glarus and invites visitors into the Town. Dedicated bicycle and pedestrian trails improve the comfort of users, open new travel options, reduce automobile traffic, increase

recreation and exercise and help create more livable communities.

One such study observed the economic impacts of the Wisconsin State Park system¹. This study reviewed the mechanisms that link state parks and trails to local economic impacts. Research questions included: "To what extent do differing visitor types spend their trip dollars in the local region around these sites?" and "How do visitors to state parks and trails contribute to local job creation and income generation within gateway communities across the state?" The study found that outdoor recreation on public lands serves as a key motivator for tourism. Researchers analyzed trip-related expenditures and excluded non-trip related spending. According to the study, visits to New Glarus Woods State Park had total visitor expenditures of \$3,268,698 with \$1,372,466 from local visits and \$1,896,232 from non-local visits.

Summary of Previous Plans

The previous Town of New Glarus CORP was completed in 2011 by the Town Parks Commission. This plan focused on trail identification, conservation, provision of educational workshops, and collaboration with the Village of New Glarus on various recreation opportunities. Specifically, the 2011 plan identified the continuing restoration efforts of the Bluebird Ridge Conservancy and acquiring Town land for a community park with a potential Town Hall site. As noted in the accomplishments section, the Town successfully continues restoration efforts and has built a Town Hall. The Town completed a whole new plan in 2017. This 2022 update provides an update to the goals and objectives, accomplishments, data, survey, and recommendations.

Town Parks Commission

The Town Parks Commission formed in 2004 to improve and maintain parks in the Town. The Town approved the first CORP in 2006, with an update in 2011. The Parks Commission seeks to balance

spending its limited dollars between long-term and immediate needs of the community. The Town and the Village formed a joint Town/Village Committee in 2009 to pursue goals mutually beneficial to both communities. The joint committee meets quarterly with the location rotating between the Town and Village.

The Parks Commission has held numerous workshops focused on objectives from the 2011 CORP. The Town is dedicated to preserving and protecting the natural environment and formalizing partnerships in the process. The following section lists the accomplishments and workshops completed since 2011. See appendix for additional workshops held.

Accomplishments

2017 Plan

- Sponsored Bee Club.
- Identified lands available for acquisition for future recreational use.
- Marked conservancy areas with proper signage and list on a Parks Master Plan map.
- Posted signage at Blue Bird Ridge Conservancy.
- Identified naturalist and environmental groups that help with preservation and provide grant money to assist residents.
- Identified grants for recreational use.
- Consulted with the Green County Forester regarding the creation of a Town Tree Planting Program for interested property owners.
- Held annual Tree Sales and contributed yearly to the Arbor Day Project.
- Educate Town residents on measures they can take to preserve their own property and foster proper environmental practices.
- Shared funding or improvements for facilities such as the ice skating rink.
- Acquired and renovated a new Town Hall.

2022 Plan

- Established paved bike / walking lanes alongside Durst and Valley View Roads.
- Continued native plant and prairie restoration

¹ Economic Impact Study

<https://urpl.wisc.edu/sites/urpl.wisc.edu/files/people/marcouiller/13EISPfinal.pdf>

at Bluebird Ridge Conservancy.

- Held annual tree sales, donating proceeds to the Boy Scouts, 2017-2022.
- Promoted well water testing programs in 2017 and 2021.
- Hosted Sugar River Beekeepers monthly meetings in 2018 and 2019.
- Organized and supported photo contests in 2018, 2019, and 2020 to highlight rural scenes in the Town of New Glarus.
- Helped fund renovations to the ball field at Glarner Park in 2021.
- Held a highly successful electronics recycling event in 2022.

Workshops*

- 2007-2010 - Parks Commission Workshops
- 2011 - Raptor Workshop
- 2012 - Barn Renovation Part 1
- 2013 - Tree and Barn Renovation Part 2
- 2014 - Tree and Bird and Conserving
- 2015 - Tree and Bee
- 2016 - Tree and Bat
- 2017 - Tree in May and Water in August
- 2017 - Well water test results workshop
- 2017 & 2019 - Birdhouse building workshops
- 2018 - Community-Supported Agriculture workshop
- 2018 & 2019 - Beekeeping Basics workshops
- 2019 Invasive Plants workshop
- 2020 Beekeeping Basics Workshop
- 2020 River Tripping Workshop (twice)

*Detailed List of the Workshops are included as Appendix D.

Figure 1: Raptor Workshop



Planning Process

Recreation and trail planning are essential components of long-range community planning in the Town of New Glarus. The Town of New Glarus contracted with Vierbicher to complete the 2022 update. Vierbicher and the CORP committee facilitated public meetings and an online survey (see Appendix A) to gather citizen feedback on future priorities for the next five years. The process involved two public engagement meetings—one at the beginning of the process and one after the draft goals and objectives were created. A public hearing was held prior to plan adoption. This plan was developed following the guidelines for Development of Local Comprehensive Outdoor Recreation Plans created by the Wisconsin Department of Natural Resources.

Plan Process Timeline

March 2022

- Kick-off Meeting
- Parks Commission Survey Development
- Future Trail and Park Discussion

April 2022

- Community Survey distributed

June 2022

- Parks Commission Review of draft survey results

July 2022

- Public Open House at Parks Commission

August 2022

- Review draft Plan
- Review draft Plan at Parks Commission and Plan Commission

October 2022

- Public Hearing
- Town Board Approval

Amending the Plan

Plan amendments are common and should be considered part of the planning process. Amendments frequently represent good implementation or plan usage and should be acceptable for consideration by local decision makers. The Parks Commission does not have to wait five years before amending the CORP. Amendments must follow the same process as when the original plan was prepared. Amendments generally prolong the effectiveness of the original plan.

There should be opportunity for public input in the planning process with a full and open discussion of the need for the amendment by the Parks Commission, a draft amendment that is reviewed and acted on by the Parks Commission at an official public meeting, a referral to the Town Board, a public hearing held by the Parks Commission or Town Board, and finally, the adoption of the plan amendment by the board.

Plan Goals and Objectives

The Parks Commission developed five main goals to guide the future growth and development of the Town. One of the most important roles of local government is its responsibility to provide open space, parks and recreation facilities and programs for public use.

Goal 1: Provide active and passive recreational lands to meet current and future recreational needs of the community and visitors.

1. Respond to community requests for provision of recreational resources.
2. Respond to future needs as they are identified.
3. Obtain additional lands for a community park based on demand by increasing populations, or the environmental and recreational significance of the land.

Goal 2: Provide safe and efficient pedestrian and bicycle access between residential neighborhoods, schools, the Village, and other recreational activities.

1. Refer to this plan in review of development proposals.
2. Develop a trail system throughout the Town to link schools, state parks, and the Sugar River Trail.
3. Link subdivision areas to the Village by pedestrian/bike trails.

Goal 3: Preserve and enhance environmental corridors.

1. Identify and conserve areas of particular interest, unique plant or animal life, scenic views, environmentally sensitive areas, or native natural areas.
2. Identify lands available to obtain if the potential exists for future recreational use.
3. Use park and recreational lands as a means to promote environmental education and community history.
4. Continue the Town Tree Planting Program.
5. Educate Town residents on measures they can take to preserve their own property and foster proper environmental practices.

Goal 4: Coordinate Park and recreation planning and development.

1. Identify and conserve areas of particular interest, unique plant or animal life, scenic views, environmentally sensitive areas, and native natural areas.
2. Coordinate park and open space planning and development with adjacent governments, school districts, Green County, state and federal agencies, and other owners of public and private open space in the community.
3. Continue to ensure the availability of recreational activities for the enjoyment and benefit of all Town residents in partnership with the Village of New Glarus and New Glarus School District.
4. Preserve areas planned for future parks and recreational trails from development.
5. Complete regular reviews and updates of this plan with the Town Comprehensive Plan.
6. Provide opportunities for public participation in park and recreational facility development.
7. Encourage volunteers to participate in park programming.
8. Provide electronic communications to our community.

Goal 5: Continue education and awareness programs.

1. Continue to provide workshops for the community.
2. Educate the general public on needs and improvements for the parks and trails system.
3. Integrate historical and cultural resources into bicycle and pedestrian facilities.
4. Provide education of and facilitate well testing.



EXISTING CONDITIONS

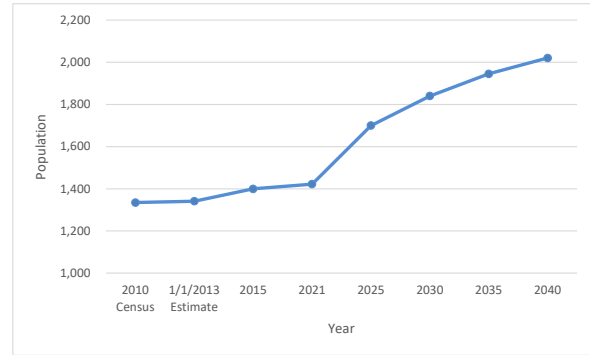
EXISTING CONDITIONS

About the Town of New Glarus

The Town of New Glarus is a picturesque community in Green County, Wisconsin that was originally founded in 1845 by Swiss settlers. According to the Wisconsin Department of Administration, the Town has a population of 1,421 (2021) with an expected population of 2,020 by the year 2040, a 42 percent increase (Figure 2). Figure 3 is a population pyramid that shows a snapshot of the Town's population taken from the 2020 American Community Survey (ACS). The age distribution is roughly the same as it was in 2015. While there are not many 20–34-year-olds, there is a spike in the 35 to 54 year old age category and a large percentage of children under the age of 19.

The Town has been continually growing for the past 20 years and will continue to grow. While the Town had many farms, that has changed over the years due to the construction of residential subdivisions. The Town has transitioned from a traditional rural town to a bedroom community populated by commuters residing on small tracts of land. Table 1 illustrates the land use classification. Current land ownership reflects a more complex blend of limited traditional agriculture, non-traditional agriculture, suburban developments, and rural single-family homes on lots ranging in size from two to forty acres.

Figure 2: Town of New Glarus Population Trends



Source: American Community Survey and Wisconsin Department of Administration

Growth Patterns

Table 1: Classification of Town of New Glarus Acreage

| Classification of Town of New Glarus Acreage | | | |
|--|--------|--------|--------|
| Classification | 2010 | 2016 | 2021 |
| Residential | 1,867 | 1,928 | 1,998 |
| Commercial | 138 | 143 | 105 |
| Agricultural | 15,091 | 14,735 | 14,555 |
| Undeveloped | 907 | 1,100 | 1,235 |
| Agricultural Forest | 1,475 | 1,536 | 1,837 |
| Forest Lands | 342 | 352 | 519 |
| Managed Forest | | 874 | 597 |
| State/County & Other Land | | 1,613 | 740 |

Source: Wisconsin Department of Revenue

Due to its close proximity to Madison the Town is experiencing continuous growth, especially through construction of new residential subdivisions. The Town has transitioned to a bedroom community. The Town must consider the current residents and future residents when planning for park recreation. According to the Village of New Glarus future land use map (figure

4), neighborhoods and industrial areas are planned within the Village's Extraterritorial Jurisdiction of the Town. The Town Parks Commission considered these growth areas when planning for recreation.

Figure 3: Town of New Glarus Population Pyramid, 2015

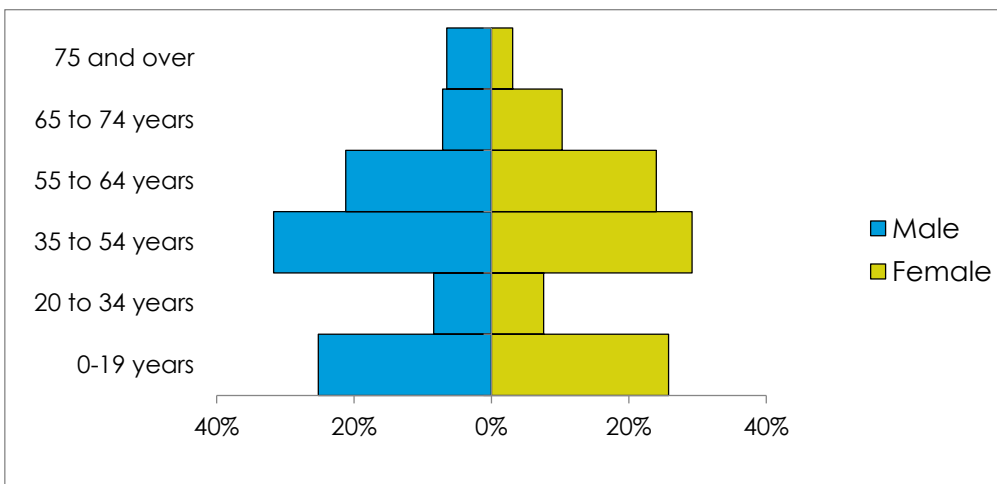
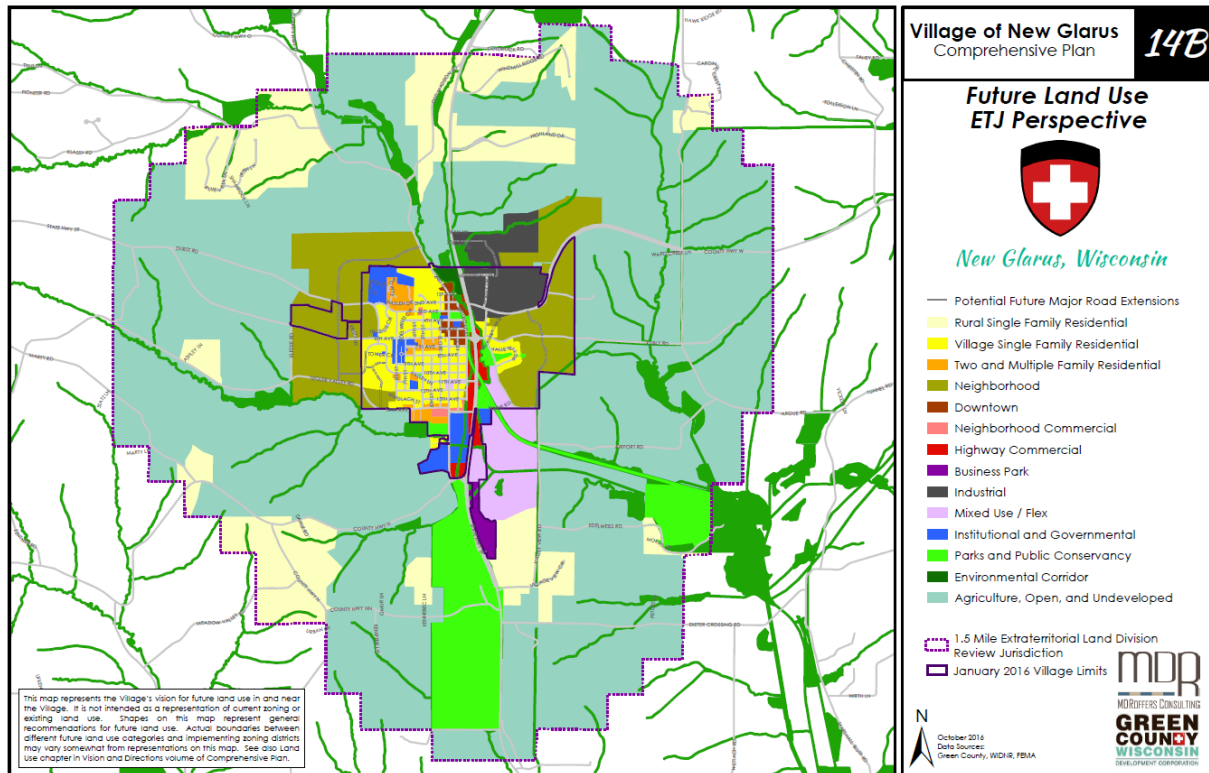


Figure 4: Village of New Glarus Future Land Use Map



Source: Village of New Glarus Comprehensive Plan

Physical Characteristics of the Region

The Town is located only 26 miles from Madison Wisconsin, the Capital, in Green County. Green County has many recreational amenities such as the Sugar River State Trail, Badger State Trail, New Glarus State Woods and the Albany Wildlife Area. The Sugar River Trail connects New Glarus to Monticello, Albany and finally to Brodhead for a total of 23 miles. The Badger State Trail connects to the Sugar River Trail in Monticello which is only six miles from New Glarus. The Badger State Trail connects to an additional 40 miles between Madison and the Wisconsin – Illinois border. These trail systems connect to larger trail systems in Wisconsin such as the Military Ridge State Trail and the Ice Age National Scenic Trail.

Topography, Soils, and Water Resources

The Town of New Glarus is located in the Southwestern Wisconsin Driftless Area, a unique geological region that was untouched by the Wisconsin Glacier. This creates a notable contrast with the remainder of the state, where the continental glacier scraped away nearly all the residual soil and left a sheet of transported soil. The Town area's topography creates dramatic

views and is ideal for biking, hiking, sightseeing, skiing and other outdoor activities. There are eight soil associations in Green County which include:

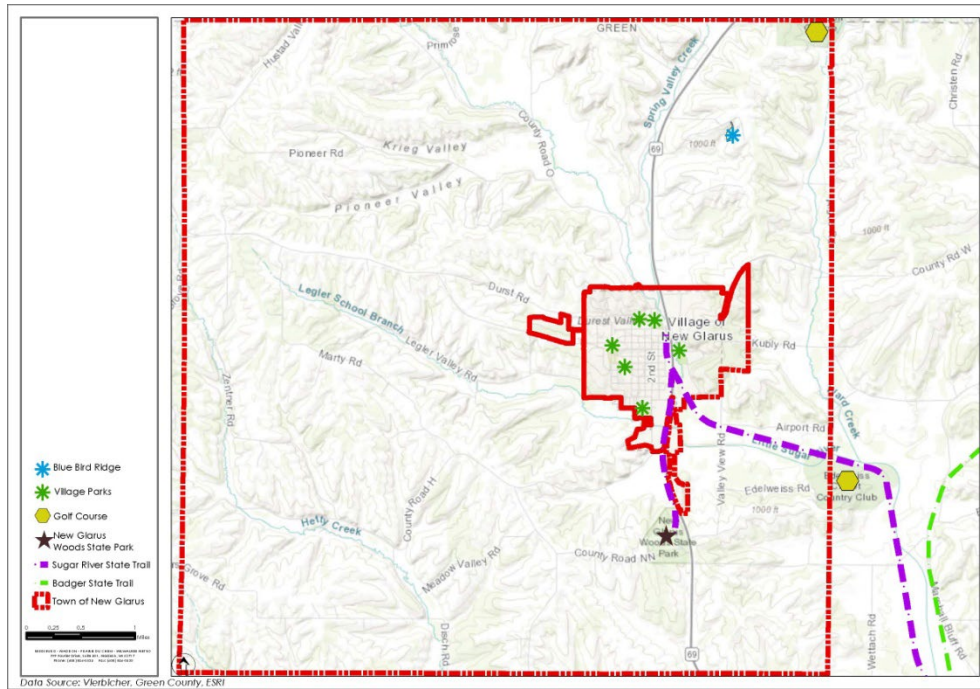
- Dodgeville-Edmund
- New Glarus-Sogn
- Fayette-Tama
- Dunbarton-Whalan
- Hebron-Saylesville
- Orion-Huntsville-Ettrick
- Durand-Myrtle-Rockton
- Dickinson-Meridian

The Town is located in the Little Sugar River watershed and has two waterways running through it: The Little Sugar River and the Legler School Branch.

Outdoor Recreation Supply

While the Town does not currently have a community park, it does have the Bluebird Ridge Conservancy and access to park facilities and programming through the school district and the Village. Figure 5 illustrates the available outdoor recreation opportunities discussed in the following section.

Figure 5: Available Outdoor Recreation Opportunities



Bluebird Ridge Conservancy

In the Town of New Glarus, the Bluebird Ridge Conservancy is a 4.29-acre area accessed through a forty foot-wide frontage on Windmill Ridge Road. The Town installed a sign marking the conservancy in spring 2011. A narrow grassy path runs 175 feet off Windmill Ridge Road. At that point, the lot widens to resemble the shape of a diamond. There is a natural oak savannah area in the center with attractive views of the countryside. Major plantings in the conservancy include: White Oak, Black Cherry, Prickly Ash, Sumac, Mulberry, Dogwood, Viburnum, and Buckthorn. Timothy and Brome are the major grass species.

Long-term plans for the conservancy include the

study of oak savannahs and prairies that were native to this area prior to the arrival of European settlers, and development of habitat to support wildlife such as the Eastern Bluebird.

School District Facilities

The New Glarus School District's parks consist of regulation football/soccer field north of the elementary school, practice fields for football and soccer south of the elementary school, and outdoor basketball courts south of the high school. The park also consists of three tennis courts, which have been resurfaced and are open for public use when they are not in use by the schools.

Village Facilities

Town residents have the ability to use the Village of New Glarus Parks and Park Shelters. The

Village has five parks that include such amenities as a fishing pond, playground equipment, soccer fields, baseball fields, tennis courts, a sand volleyball court, picnic areas, water fountains, shelters, and a swimming pool. The following is the list of parks in the Village:

- Hoesly Pond
- Candy Cane Park
- Valle Tell Park
- Veteran's Memorial Park
- Village Park
- Glarner Park

Additionally, Town residents have the opportunity to use Village recreational programming.

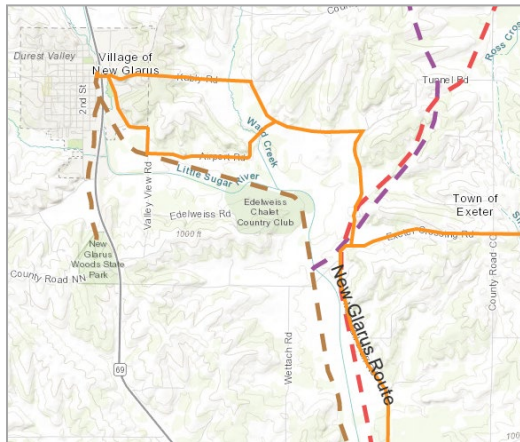
New Glarus Woods State Park

The New Glarus Woods State Park is located within the Town of New Glarus. The park has approximately 105 acres, 38 campgrounds, eight trails and the Sugar River Trail spur (1.6 miles) that connects to the Village of New Glarus. See Appendix C for the New Glarus Woods State Park.

Existing Trails

As discussed previously, the Sugar River State Trail passes through the Town of New Glarus and connects to areas outside the Town that include communities in Green County. Additionally, in Monticello the Sugar River State Trail connects to the Badger State Trail, which connects to additional trails in the State of Wisconsin and the State of Illinois. Green County recently developed an on-road rural bike route online map for Green County (figure 6). The route travels along New Glarus city streets, Kubly Road, Airport Road, Valley View Road, Argue Road, Tunnel Road, Marshall Bluff Road, Exeter Crossing Road, County Highways D and C, and County Road EE. University of Wisconsin-Platteville engineering students developed the map based on state standards for on-road bicycling.¹ In addition to walking and biking there are also trails for snowmobiling.

Figure 6: Green County On-road Bicycle Map



¹ A Bike Tour: The City of Monroe and Green County
<https://swwrpc.maps.arcgis.com/apps/MapJournal/index.html?appid=89ab32a5a2984108bb8f31a067ba9822>

2022 Budget

The Parks Commission Budget is allocated to the following line items:

- Town Park/Town Trail Sinking Fund - \$4,500
- Trail Development - \$500
- Per Diems - \$2,405
- Payroll Taxes - \$181
- Parks Workshops/Projects - \$4,938
- Park Postage - \$250
- Printing - \$300
- Arbor Day Tree Planting - \$300
- TPE Membership, New Glarus Woods - \$300
- Recruitment - \$100
- Pool Scholarships - \$26
- Maintenance/Restoration of BRC - \$1,200

Needs Assessment

To accomplish the outdoor recreation needs assessment, Vierbicher and the Town Parks Commission developed an outreach strategy for the Town of New Glarus.

Public meetings were held allowing for the community to learn about the CORP and provide feedback on needs, goals, and objectives.

Sample Recreation Open Space Standards

Park and Open Space Standards and Guidelines for the Plan Commission and Parks Commission govern the process for locating future parks. There are three typical sizes of local parks the Town would provide: a mini-park, a neighborhood park, or a community park. Each size park has a recommended service area (distance to park), desirable size, (number of acres per one thousand people), and desired site characteristics.

This classification system presented in Table 2 is intended to serve as a guide to planning—not as an absolute blueprint. Sometimes more than one component may occur within the same site (but not on the same parcel of land), particularly with respect to special uses within a regional park. Planners of park and recreation systems should be careful to provide adequate land for each functional component when this occurs.

The National Recreation and Park Association (NRPA) suggests that a park system, at a minimum, should be composed of a “core” system of parklands, with a total of 6.25 to 10.5 acres of developed open space per one thousand people. The size and amount of “adjunct” parklands will vary from community to community but must be taken into account when considering a total, well-rounded system of parks and recreation areas.

Table 2 communicates the recommended standards for service area, size, density, use, and site location. Mini parks are the smallest type of Municipal Park, ideally spanning no more than one acre of land and designed to service no more than the quarter-mile radius surrounding the park. Neighborhood parks are the next largest type, preferably spanning at least 15 acres of land and serving up to a half-mile radius in every direction. These parks generally accommodate approximately 5,000 users—roughly the size of a city neighborhood.

Community parks are the largest park type. Designed to serve users within a 1 to 2 mile radius, community parks are ideally no less than 25 acres in size, with a density of 5 to 8 acres per thousand users. Parcel sizes are typically one acre for mini parks, two acres for neighborhood parks, and five acres for community parks.

Table 2: Sample Recreation and Open Space Standards

| Park Type | Service Area | Desireable Size | Acres/1,000 Population | Use | Site Location |
|-------------------|---|------------------|------------------------|--|---|
| Mini Park | Less than ¼ mile radius | One acre or less | .25 to .50 acres | Specialized facilities that serve a concentrated or limited population or specific group such as young children or senior citizens. | Within neighborhoods or adjacent to schools, elderly housing. The facility should be easily accessible by walking for senior citizens or parents with small children. |
| Neighborhood Park | ¼ to ½ mile radius to serve population up to 5,000 (a neighborhood) | 15+ acres | 1.0 to 2.0 acres | Area of intense recreational activities such as field games, court games, crafts, neighborhood center. | Proximity to elementary schools, or centrally located in developed areas with safe walking and biking areas. |
| Community Park | Several neighborhoods 1 to 2 mile radius | 25+ acres | 5.0 to 8.0 acres | Area of natural or ornamental quality for outdoor recreation such as walking, viewing, sitting, picnicking, could have some field and court games. | Proximity to community facilities and resources. |

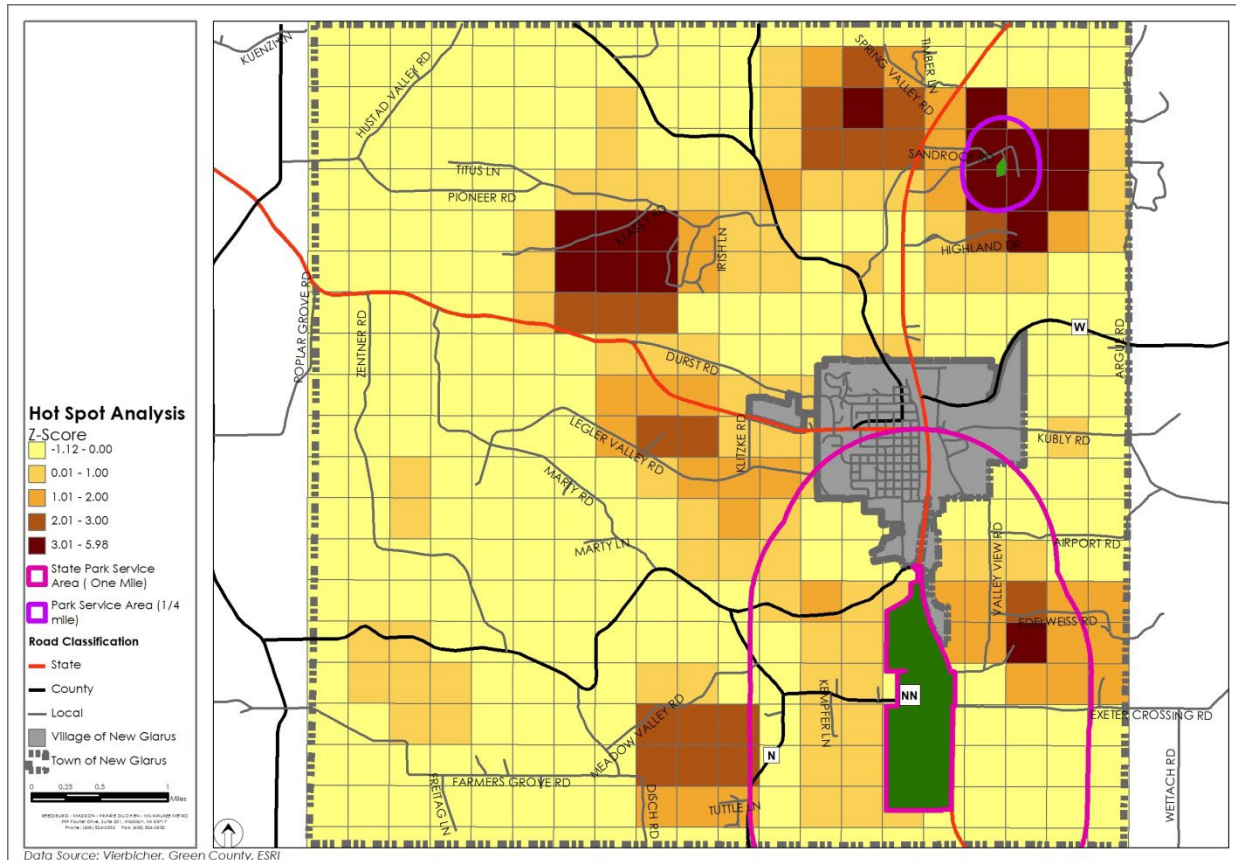
Placement of parks is dependent on multiple factors. Parks should be easily accessible from commonly used pathways such as roads, sidewalks, or trails, and should function as a complement to surrounding uses. Residents and visitors are more likely to use parks if they are easily accessible from high population areas, and their construction fluidly mixes with surrounding commercial or residential areas. Likewise, parks should be located in areas with high enough population densities to ensure adequate use.

Based on these criteria, there are multiple locations in the Town that would accommodate each type of park. Figure 7 shows a heat map of the Town based on population density. Dark brown areas indicate locations with the highest population densities, with gradually lighter colors indicating areas with lower population densities. Yellow areas generally indicate agriculture, open space, and undeveloped land, and green regions indicate the location of existing parks.

The Bluebird Ridge Conservancy and New Glarus Woods State Park are both located within the planning area and serve portions of the Town. A contiguous ring of moderate to higher density neighborhoods surrounds the municipal boundary of the Village of New Glarus. New Glarus Woods State Park serves the southern half of the Village along with many of the southern residential areas in the Town. Bluebird Ridge Conservancy serves the higher density residential area in the northeast of the planning area.

Demand for future parks is greatest in the higher density residential areas lying just west of the Village, along with the higher density areas in the Town's northern and northeastern portions, as shown on Figure 7. The Town could consider placing a large community park in low density areas along Old Madison Road in order to capture residents from the three large clusters of high population density in the northern half of the planning area. Location of a neighborhood or community park would also capture large numbers of residents if located off either Durst

Figure 7: Population Density



Road or Legler Valley Road due west of the Village boundary.

Factors affecting when to build new parks include: possible changes to land use, population growth, and expected development patterns. While retrofitting of old development into parkland is a possibility, these circumstances generally mean that a municipality has less control over the aesthetics and design of the park. Plans for future parks in low density areas should be considered well in advance of development to ensure parks harmoniously complement adjacent uses. Population growth is the second determining factor contributing to decisions about park placement. The Town's population is expected to grow by 44% between 2016 and 2040, adding substantial future demand for recreational opportunities. The Town should monitor expected population changes and identify areas of expected future growth.

Community Survey

A survey was distributed online and made available in hard copies at the Town Hall. In total, 173 individuals responded from the Town and surrounding area. A total of 105 individuals specifically from the Town of New Glarus participated in the survey. The results from the Town residents are included in the appendix. Please note not all respondents answered every question. Therefore, the number of responses to any one question may not total 105.

The survey results were shared with the Parks Commission, on the Town's website, and at a public forum held on July 20, 2022. The results of the survey, public forum, and evaluation were instrumental in framing the outdoor needs assessment.

The primary purpose of the survey was to understand the current usage of available amenities, and identify the need for future parks, facilities, and recreational spaces. Figures 9 - 11 show the use of amenities and interest in amenities.

Survey participants noted in the open-ended questions that they favor more trails that connect Town neighborhoods, Village amenities, and

regional trails. Several comments mentioned that a community center containing an indoor pool, fitness facilities, multi-purpose gyms, and a walking track are desired. It was also mentioned that if the Town supports the Village park and recreation program, then the park programming fee should be lower for Town of New Glarus residents.

Most users indicated they **never use** the following

- Baseball/Softball Fields
- Soccer Fields
- Basketball Courts
- Tennis Courts
- Conservancies
- Volleyball Court
- Public Swimming Pool
- Playgrounds and Equipment

Most of the users indicated they **use** the following:

- Natural Surface Recreation Trails
- Paved hiking/biking Along Roadway

More users indicated they were **not interested** in the following:

- Football/Lacrosse Fields
- Frisbee Golf Course
- Designated Bike Trails
- School-year Recreational Programming
- Pickleball Courts

More users indicated they are **interested** in the following:

- Community Recreation Center
- Outdoor Ice-Skating Rink
- Adult Recreational Programs
- Trails that Connect Town to Village

Figure 8 & 9: Indicate how often your household uses the following:

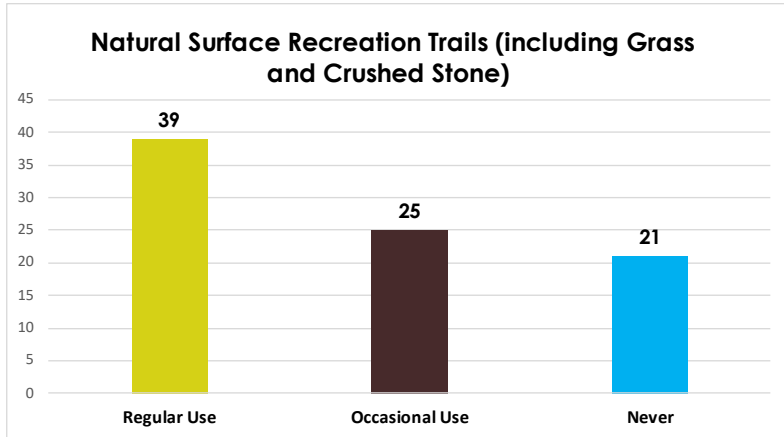
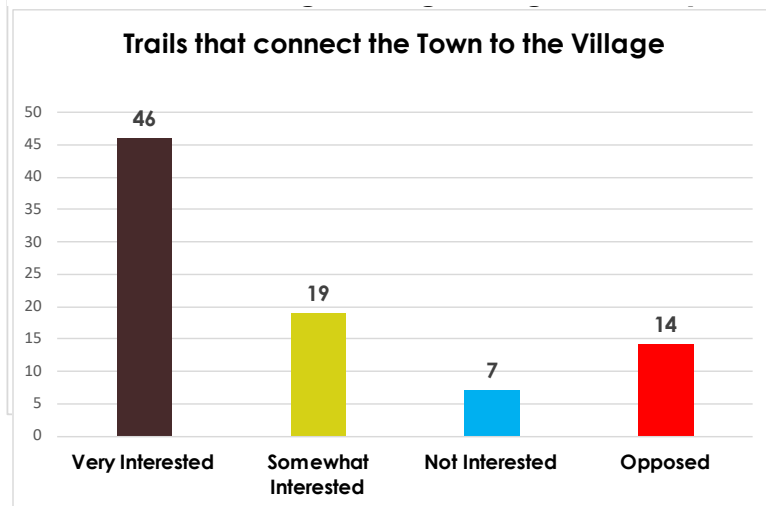
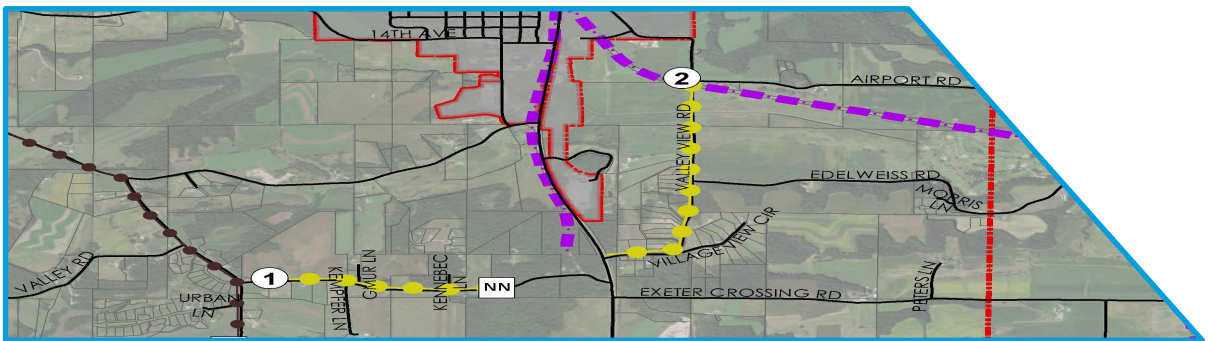


Figure 10: Indicate your households interest in expanding these services?





RECOMMENDATIONS

RECOMMENDATIONS

The Town has great opportunity to provide active and passive recreational activities and to connect recreational activities inside and outside of the Town. The recommendations in this section have been developed based on feedback from citizens of the Town, and discussions within the Parks Commission, and Plan Commission. As the Town develops, the development policies of the Town may provide opportunities to expand upon these initial recommendations.

In 2017, The CORP Committee spent time during the first public forum identifying potential trails that connect to neighborhoods, state parks, the Village, and the Sugar River Trail. At the second public forum, the CORP committee discussed the community-wide survey results; specifically the demand for a trail to connect the northern subdivisions to the Village. The focus of the discussions was to enhance the existing Town facilities and provide better connections between the residents and these facilities. Creation of new facilities (other than new connections or trails) was not considered a significant priority at this time.

In 2017, The CORP committee identified nine potential trails and ranked their priority for connections based on the community survey, existing connections, and potential future development. However, in 2022 through engagement with residents since 2017 and the 2022 plan update process, the Parks Commission has updated the proposed trail map. No proposed trails were removed from the map. However, two trails that were identified as high-priority in 2017, and one medium-priority were reduced to low-priority. Thus, leaving two trails as the priority. No work should be completed on the low priority without full discussion on the improvements. Table 3 identifies the potential future trails, the priority, length, and location. It is assumed that the majority of trail locations will be in the public right-of-way. However, in certain locations, the Town will work with local property owners to negotiate access easements for public trails. The trail construction type has not been

identified for each trail at this time, but generally, the trails considered would be a grass or crushed stone surface.

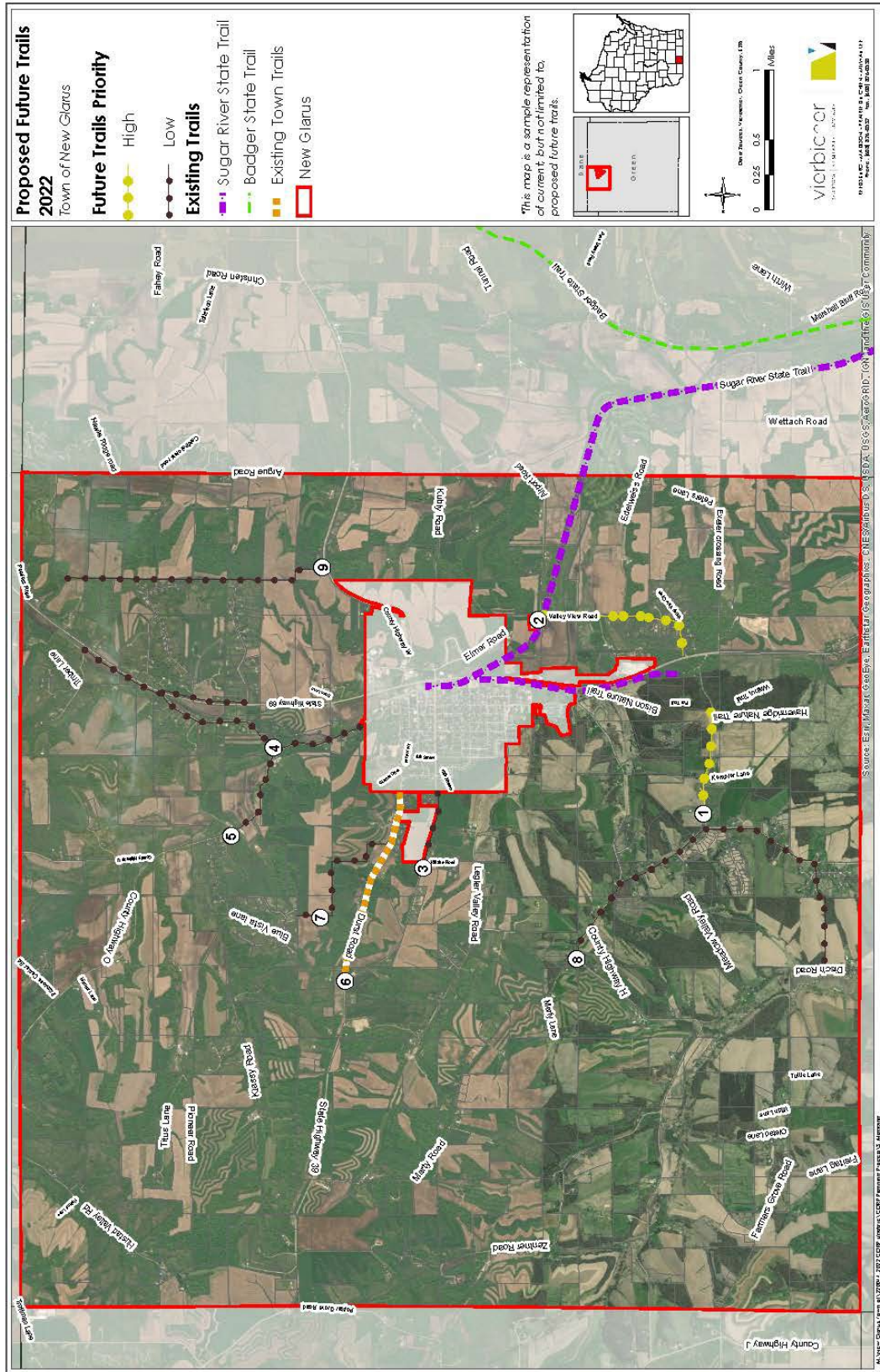
Figure 11 shows the potential trails along with the corresponding Trail ID numbers and priority levels. This map represents both existing and potential future trails. Additional research and surveying will need to be completed to determine the placement and construction type of trails. These trails are intended to connect various locations within the Town and to increase access to the community parks system. Because these trails will serve the entire Town by increasing access and connectivity, it is justifiable to consider impact fees as a method to capture the portion of costs attributable to new development.

Executing these recommendations is essential to accomplishing the goals and objectives of this plan. On the following pages, tables presenting the list of Goals in the 'Plan Goals and Objectives' section, are paired with strategies to achieve the goal, a time frame, and responsible parties or partners for implementation. A significant component of implementing the plan goals is collaboration between large and small acreage landowners, developers, and the Town Committees and Boards. Balancing the Town goals with individual property owners' rights is paramount to maintaining goodwill throughout the community and fostering an environment that supports the plan goals. Achieving plan goals using the condemnation process is not desired.

Table 3: Potential Future Trails Information

| Trail ID | Priority | Length | Location |
|----------|----------|--------|---|
| 1 | High | 0.74 | County Highway NN - from County Highway N to beginning of New Glarus State Woods Park boundary. |
| 2 | High | 0.56 | Valley View Rd - from Sugar River Trail to Edelweiss Road. |
| 3 | Low | 0.49 | County Trunk 39 - from Klitzke Rd to Village boundary. |
| 4 | Low | 2.87 | County O to Old Madison Rd - From County Highway O at the Village Boundary, right on to Old Madison Rd to Highway 69 then split north to Spring Valley Rd and split south to Windmill Ridge Rd. |
| 5 | Low | 0.75 | County Highway O - from Highway U to Old Madison Rd. |
| 6 | Complete | 1.4 | Durst Rd - from Village boundary 1.41 miles west - Completed! |
| 7 | Low | 1.18 | Through property from Durst Rd to connect Blue Vista Ln (route not determined). |
| 8 | Medium | 1.52 | County Highway H - from State Highway 69 to County Highway N. |
| 9 | Medium | 1.59 | County Highway N - from County Highway H to Tuttle Lane. |
| 10 | Medium | 0.38 | Klitzke Road - from State Highway 39 to Legler Valley Road. |
| 11 | Medium | 0.51 | Legler Valley Road - from Klitzke Road to Village of New Glarus corporate limits to the east. |

Figure 11: Town of New Glarus Potential Future Trails



| Goal | |
|------|-----------------|
| G1 | Continue t |
| G1 | Research adding |

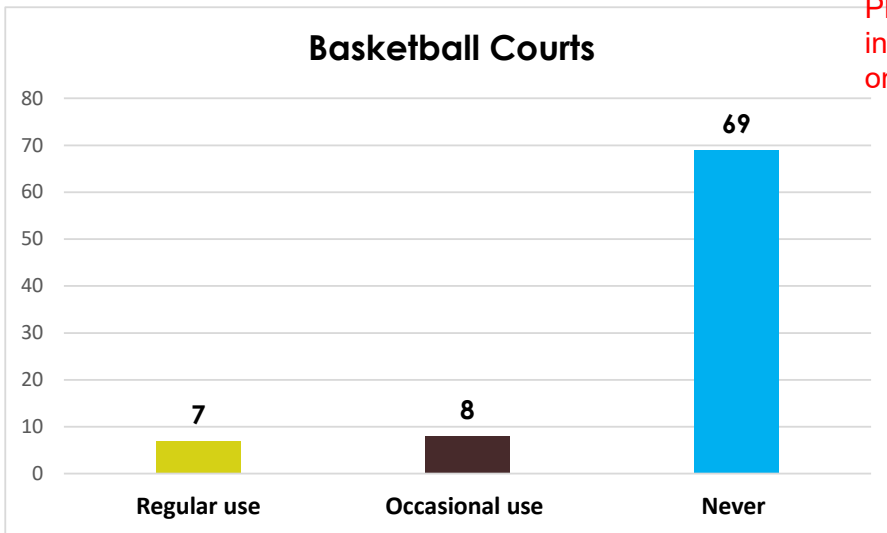
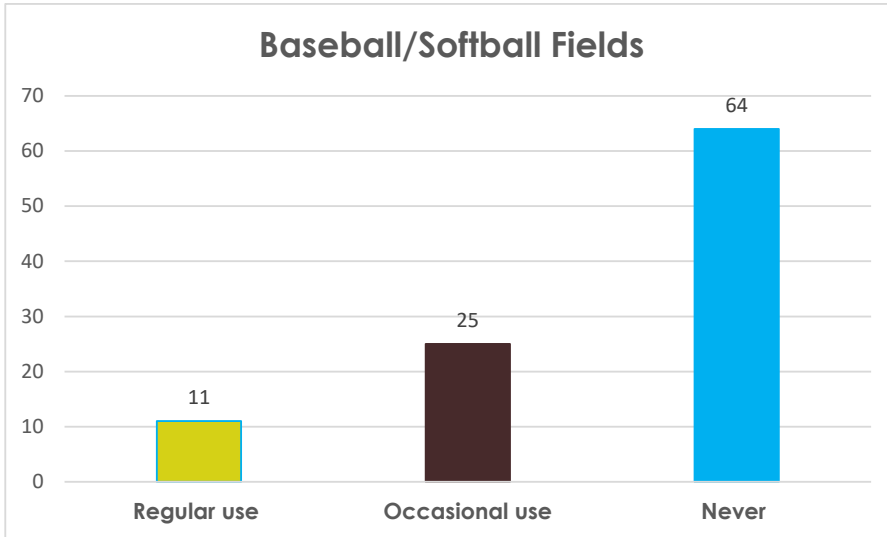
Town of New Glarus CORP Recommendations

| Goal | Strategy | Time frame | Responsible Parties |
|------|--|-----------------------|---|
| G2 | Utilize best management practices to install trails including access for disabled users. | Ongoing | Parks Commission |
| G2 | Research and obtain grants to support trail development. | Ongoing | Parks Commission, Joint Parks Commission, Town Board, Village Board |
| G2 | Acquire land through combination of state grants, federal grants, county grants, gifts, donations, and Town resources. | Ongoing | Parks Commission |
| G3 | Mark conservancy areas with proper signage and list on Park Master Plan map. | Ongoing | Parks Commission |
| G3 | Identify naturalist and environmental groups to assist with preservation and grant resources. | Ongoing | Parks Commission |
| G3 | Establish guidelines to accept or acquire land for future development or preservations. | Short-Term | Parks Commission |
| G3 | Consult with the Green County Forester regarding the Town tree planting program for interested property owners. | Ongoing | Parks Commission |
| G4 | Work with the Village to reduce the Town of New Glarus non-resident fee for park programming and pool pass. | Ongoing | Parks Commission |
| G4 | Continue to work with the Village on building a joint community center. | Ongoing | Parks Commission, Joint Parks Commission |
| G5 | Create a volunteer database that receives quarterly notices about volunteer opportunities. Utilize the contact information from the community survey of participants that noted to be notified of volunteer opportunities. | Immediate and ongoing | Parks Commission |
| G4 | Create partnership guidebook that includes engagement with the business community, press releases, recognizing the business support in the news and online, and potential naming rights. | Immediate and ongoing | Parks Commission |
| G5 | Continue to provide the workshops and look to develop new workshops. | Ongoing | Parks Commission |

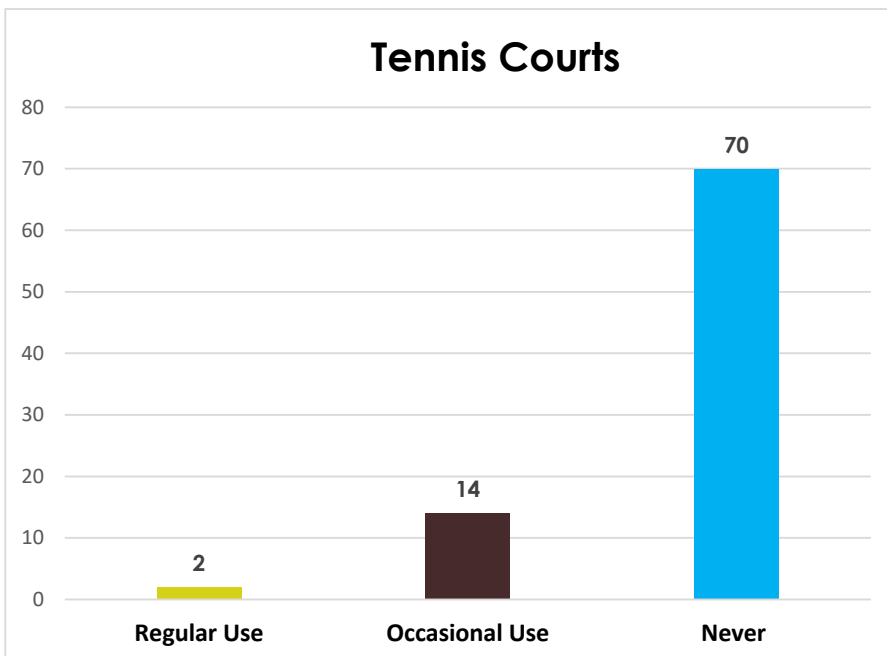
| Town of New Glarus CORP Recommendations | | | |
|---|--|------------|---|
| Goal | Strategy | Time frame | Responsible Parties |
| G1 | Continue to search for a site appropriate for a Town park. | Ongoing | Parks Commission, Joint Parks Commission, Plan Commission, School District |
| G1 | Research the demand and feasibility of adding soccer and baseball fields or coordinating with other communities in Green County for the increased demand for fields. | Ongoing | Parks Commission, Green County Property Committee, Insurance Committee, Green County Leaders, School Districts, Joint Parks Commission, Soccer Associations |
| G1 | Support current and future summer recreation activities as identified by Town residents. | Ongoing | Parks Commission, Joint Parks Commission |
| G1 | Continue the restoration efforts of the prairie remnant and oak savanna at the Blue Bird Ridge Conservancy and promote its use as a classroom tool. | Ongoing | Parks Commission |
| G1 & G2 | Develop the trails identified in the Future Trails Map. | Ongoing | Parks Commission, Town residents, Green County Tri-county trails committee |
| G2 | Add "Refer to CORP" to a development checklist to make sure park and trail recommendations are included in developer's plans | Short-Term | Town Staff/Administration, Plan Commission, Parks Commission |
| G2 | Ensure land owners, Town residents and DNR have input in the trail development. | Ongoing | Parks Commission |
| G2 | Collect park impact fees from new developments sufficient to meet the anticipated cost of providing park improvements. | Ongoing | Parks Commission, Plan Commission |
| G2 | Purchase or secure easements for trails. | Ongoing | Parks Commission, Plan Commission, Technical Review Committee |
| G2 | Identify existing and potential schools, parks, paths, Ice Age Trail and community connection points. | Ongoing | Parks Commission |
| G2 | Establish a community park fund for donations. | Immediate | Parks Commission and Town Board |
| G2 | Continue to dedicate a percentage of each year's park budget account for trail development. | Ongoing | Parks Commission |
| G2 | Utilize best management practices to install trails including access for disabled users. | Ongoing | Parks Commission |
| G2 | Research and obtain grants to support trail development. | Ongoing | Parks Commission, Joint Parks Commission, Town Board, Village Board |

| Town of New Glarus CORP Recommendations | | | |
|---|--|-----------------------|--|
| Goal | Strategy | Time frame | Responsible Parties |
| G2 | Acquire land through combination of state grants, federal grants, county grants, gifts, donations, and Town resources. | Ongoing | Parks Commission |
| G3 | Mark conservancy areas with proper signage and list on Park Master Plan map. | Ongoing | Parks Commission |
| G3 | Identify naturalist and environmental groups to assist with preservation and grant resources. | Ongoing | Parks Commission |
| G3 | Establish guidelines to accept or acquire land for future development or preservations. | Short-Term | Parks Commission |
| G3 | Consult with the Green County Forester regarding the Town tree planting program for interested property owners. | Ongoing | Parks Commission |
| G4 | Work with the Village to reduce the Town of New Glarus non-resident fee for park programming and pool pass. | Ongoing | Parks Commission |
| G4 | Continue to work with the Village on building a joint community center. | Ongoing | Parks Commission, Joint Parks Commission |
| G5 | Create a volunteer database that receives quarterly notices about volunteer opportunities. Utilize the contact information from the community survey of participants that noted to be notified of volunteer opportunities. | Immediate and ongoing | Parks Commission |
| G4 | Create partnership guidebook that includes engagement with the business community, press releases, recognizing the business support in the news and online, and potential naming rights. | Immediate and ongoing | Parks Commission |
| G5 | Continue to provide the workshops and look to develop new workshops. | Ongoing | Parks Commission |
| | | | |

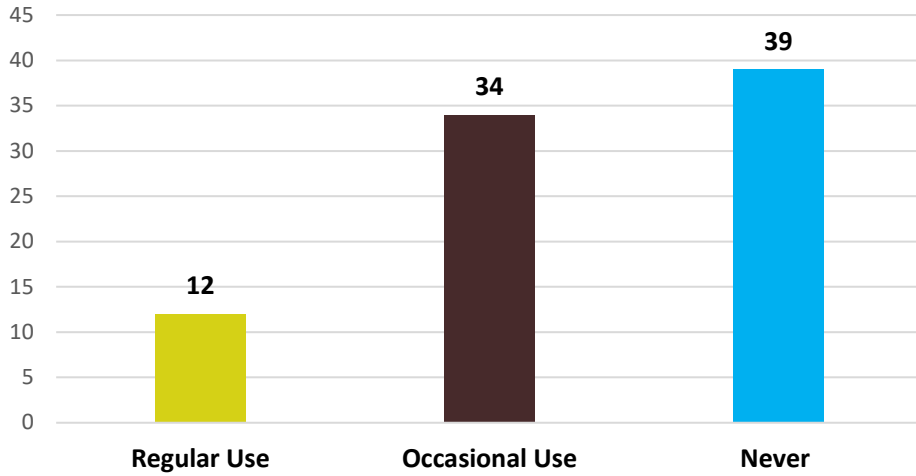
1. The following recreational opportunities and facilities are available at the Town and Village parks and conservancies. Please indicate how often your household uses each of these amenities.



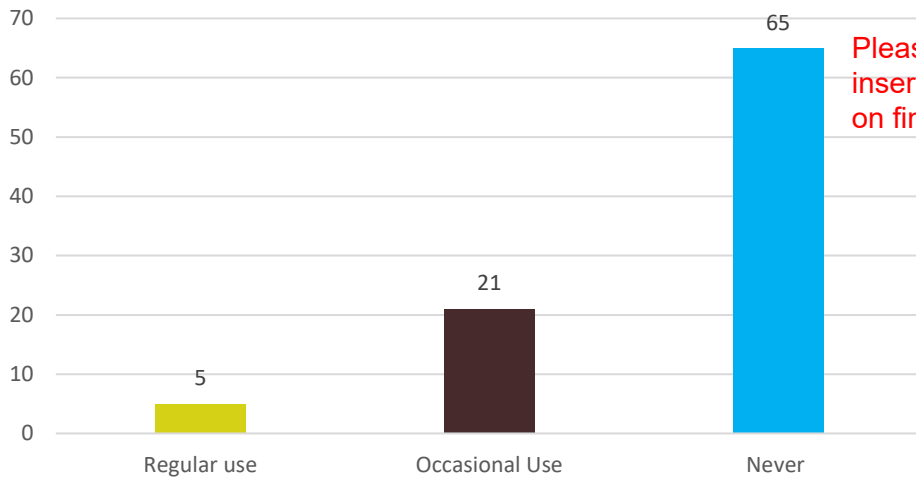
Please note we still need to insert soccer slide - will do this on final draft.



Conservancies

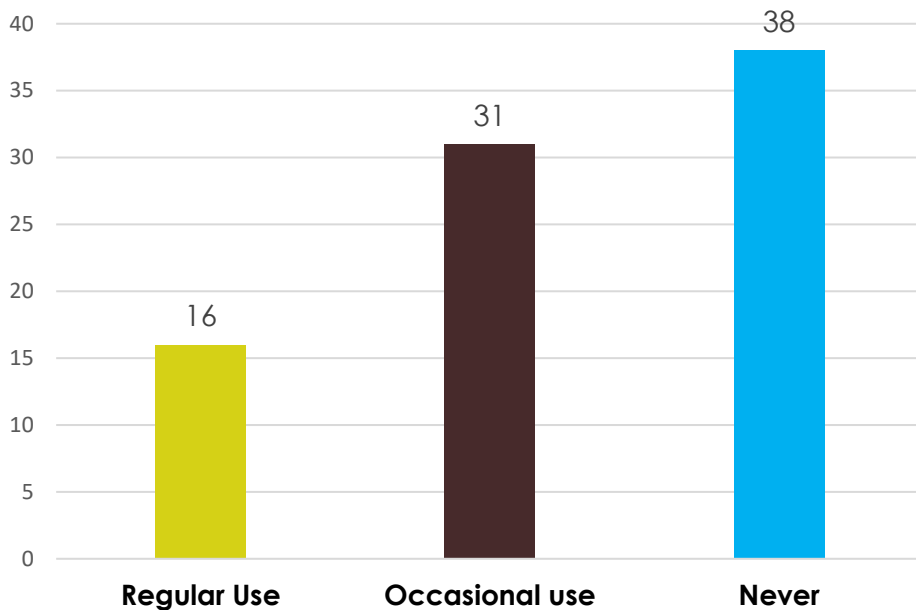


Sand Volleyball Court

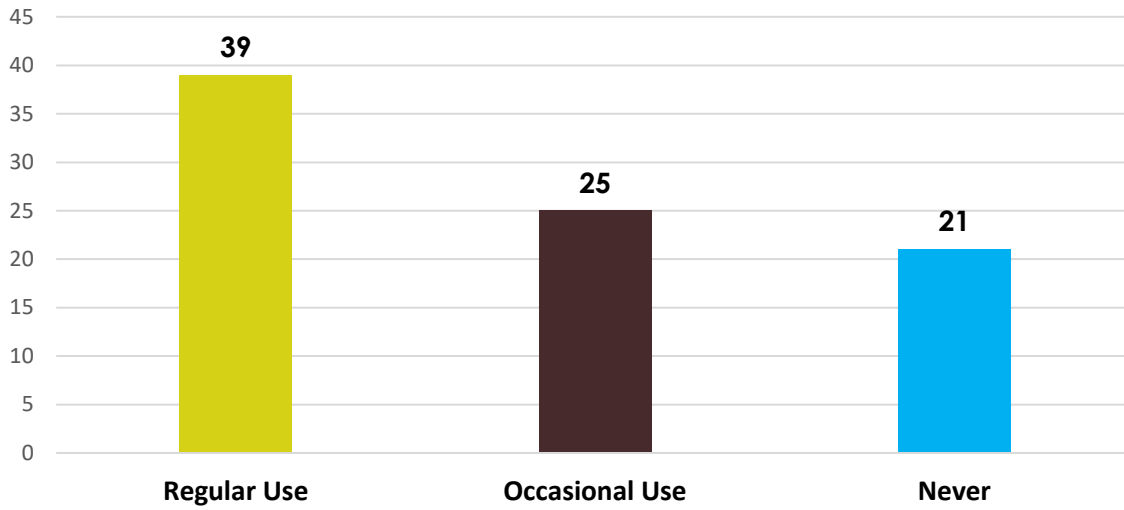


Please note we still need to insert soccer slide - will do this on final draft.

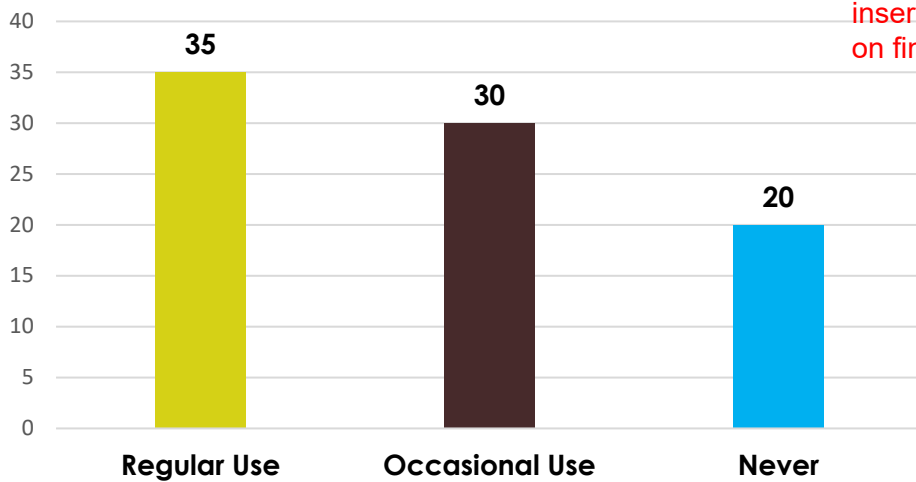
Public Swimming Pool



Natural Surface Recreation Trails (including Grass and Crushed Stone)

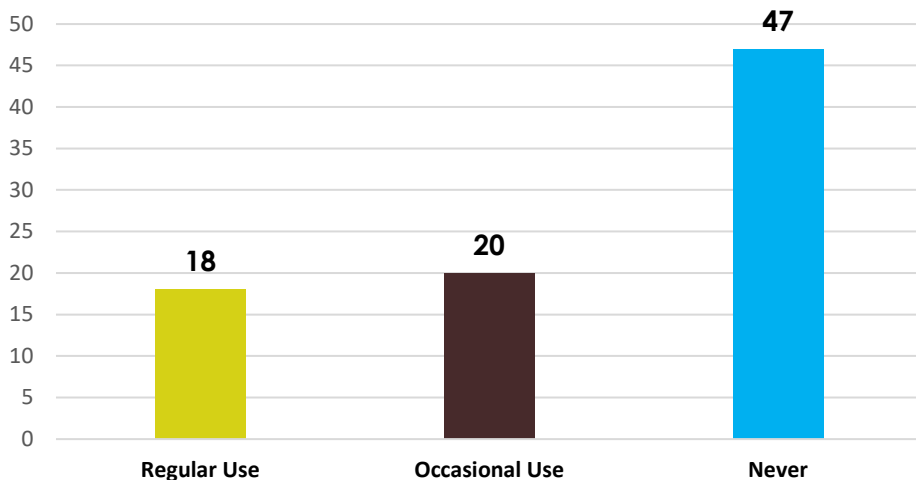


Paved hiking/biking along roadway



Please note we still need to insert soccer slide - will do this on final draft.

Playgrounds and Equipment



2. If there is a facility or recreational opportunity that your household uses that is not listed above, please indicate it below and how often your household uses it.

1. Sugar River
2. Fishing in local streams,
3. Snowmobile trails; UTV trails (where allowed); Golf Course (occasionally)
4. Let's talk about converting abandoned Tennis courts into Pickleball Courts. Would use 3 or more times weekly. Fastest growing sport in America.
5. We use the State bike trails to run, walk or bike almost every day of the year.
6. Bike trails please add
7. The baseball field usage is limited due to the programs offered and field availability. Our family has chosen to play baseball in Verona to get consistent programming.
8. canoeing kayaking and paddleboarding.
9. New Glarus Woods
10. Pickle ball (on tennis courts)
11. We use our town road for walking 1-2 times a week.
12. Cross country skiing. 5x annually
13. YMCA 5 times a month
14. NG Woods Park - regular user
15. pickle ball
16. Encourage collaboration with the Village for joint use projects to minimize costs and maximize services.
17. Track - 10X per year, indoor pool 15X per year

Please note we still need to insert soccer slide - will do this on final draft.

3. Please provide any comments you may have regarding the Town's and Village's existing outdoor recreation facilities and amenities below.

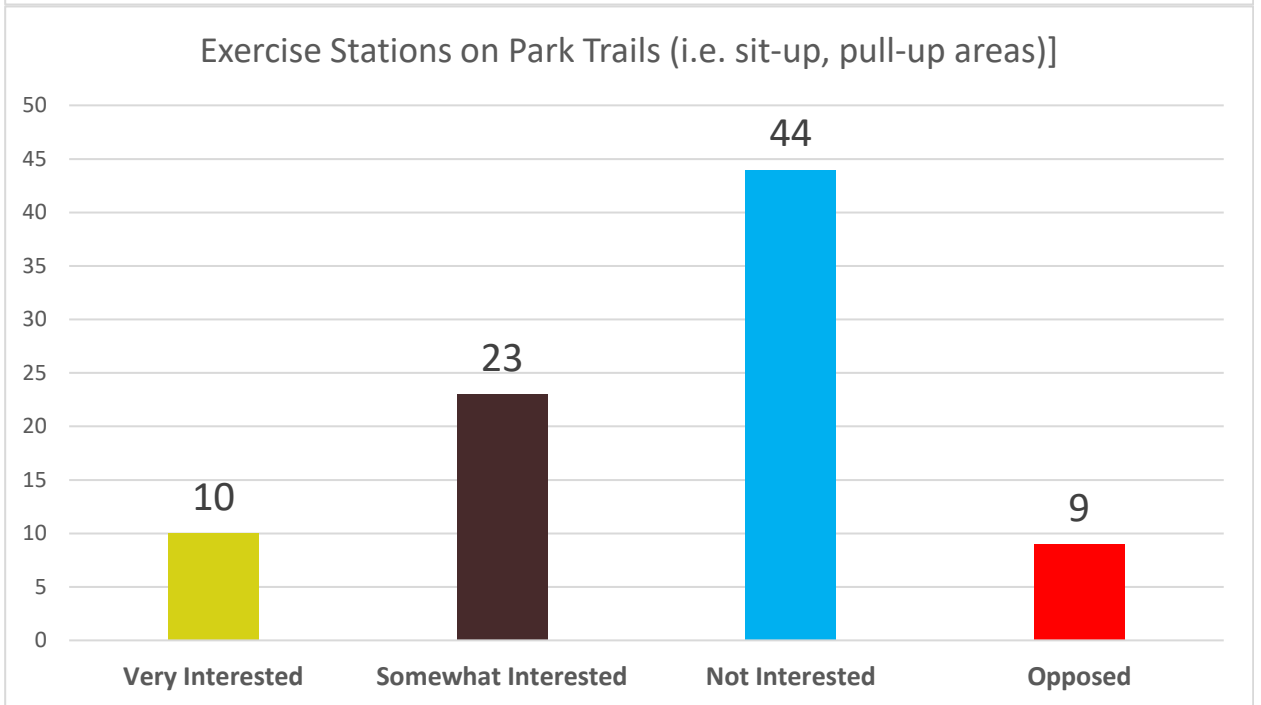
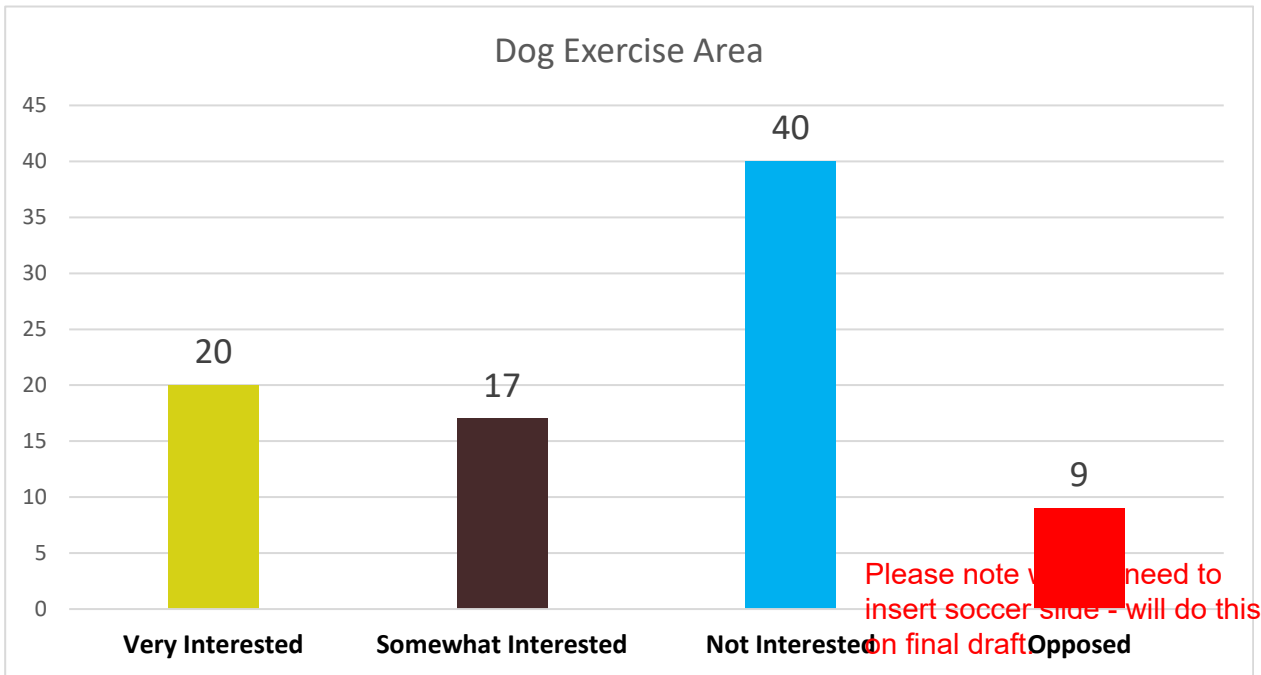
1. Town residents have to pay additional charges over Village residents to participate in Village activities for programs at their facilities. The Town does not have any of their own athletic facilities separate from those of the Village, and the Village's fields are significantly lacking to provide space for the number of kids in their programs, such as summer baseball and softball. For example, most other communities around us have more Fields where the Village has only one softball and one baseball diamond. I would like to see the Town partner more with the Village to construct additional athletic fields (located either in the Town or the village), and in doing so in exchange for the Town's financial participation, eliminate the surcharge that the township kids are charged to participate in sponsored activities.
2. The tennis courts need repair and upkeep. This is a sport that all age groups can play
3. The paved bike path in town to the state is in horrible condition . Tennis courts need resurfacing as well.
4. Baseball/softball fields should include more amenities for the sports such as batting cages and pitching areas (especially at Glarner Park). I think the town should provide more money to the village to share these costs. I would prefer to pay residential rates to the village for programs rather than non-residential.
5. Instead of building new they should concentrate on maintaining or expanding existing. For example an indoor pool facility to use year round would be awesome.
6. Assume this question is about question number 1, if so that is above not below. I would like to say however that I do think the Tennis Courts need attention and are a great asset we should renovate. Also, we favor many more trails connecting outlying areas of the Town to the Village. In particular we strongly favor connecting the State Park Woods to the trail going into the Village.
7. "As an avid bicyclist I would like to see future road improvements include a paved bicycle lane (at the edge of each lane, not a separate bike path) or at least consider it during design. Having spent 34 years in the civil engineering field I am well aware of the increased costs, problems and design restraints - limited right of way, etc.
Biking is becoming more and more popular each year so I think it is important for the Township to be proactive in this regard. I would also comment that I think the Township has done very well keeping the taxes reasonable - most of us are aware that we can't have improvements without raising taxes. I would just hope that consideration be given as we move forward. Thank you."
Please note we still need to insert soccer slide - will do this on final draft.
8. Now that I'm over 65 and my kids are grown, I don't use many facilities. When my kids were around, we did you these facilities often.
9. The bike trail is an extremely rough ride. Consider adding fresh stone to bike trails or consider corporate sponsorship to pave bike trail. This seems to work with bike trails in northern Wisconsin. This might be outside of this pole, but I do feel you will attract more visitors with a nicer bike trail.
10. We would like to see a Town public park and joint Town-Village pickleball courts.
11. I didn't know that the Town and Village had any conservancies. Our children definitely used the other rec facilities/amenities when they were growing up, and we look forward to using playground equipment when grandchildren visit.
12. Add bike trails
13. Tennis courts aren't used because of poor condition.
14. It would be great to have Town and village support to keep the little sugar river open for paddling recreation! A few Village citizens opened (cut fallen tree obstructions)the river from the Kubly Elmer road area down to the Exeter area. Possibly ask the NG Brewery for an access/landing point? Another access could be North at a bridge or South along DNR land along the Sugar river bike trail.
15. The town and village have a great variety of existing recreational facilities. Compared to other towns and villages around Wisconsin of comparable size, New Glarus has significantly more opportunities than other communities. The Sugar River Trail and New Glarus Woods State park are also available for anyone to use.
16. I understand that the softball and soccer fields in the Village are over-capacity.
17. Would like to have trails extended north of the village to utilize for walking biking running.
18. Add pickleball lines to tennis courts
19. The neighborhoods north are disconnected from the village and highway 69 is not safe for foot or bike traffic. Please consider building a recreation trail alongside highway 69.
20. Village does not seem to take much care in recreation facilities, tennis courts by high school are a mess and grass at new baseball field far too long before first cutting.
21. Love the parks for our family and pool!
22. I feel our facilities need to be updated. We travel to other communities regularly for youth sports and our facilities are lacking to say the least. I think it is time to put some effort into, at minimum, maintaining these facilities and ideally making improvements! A working concession stand, bleachers at every facility, nets on the tennis courts and a court that is in decent shape to play on and better parking for some of the parks.
23. There are some facilities however no cohesive plan to expand/market

3. Please provide any comments you may have regarding the Town's and Village's existing outdoor recreation facilities and amenities below.(continued)

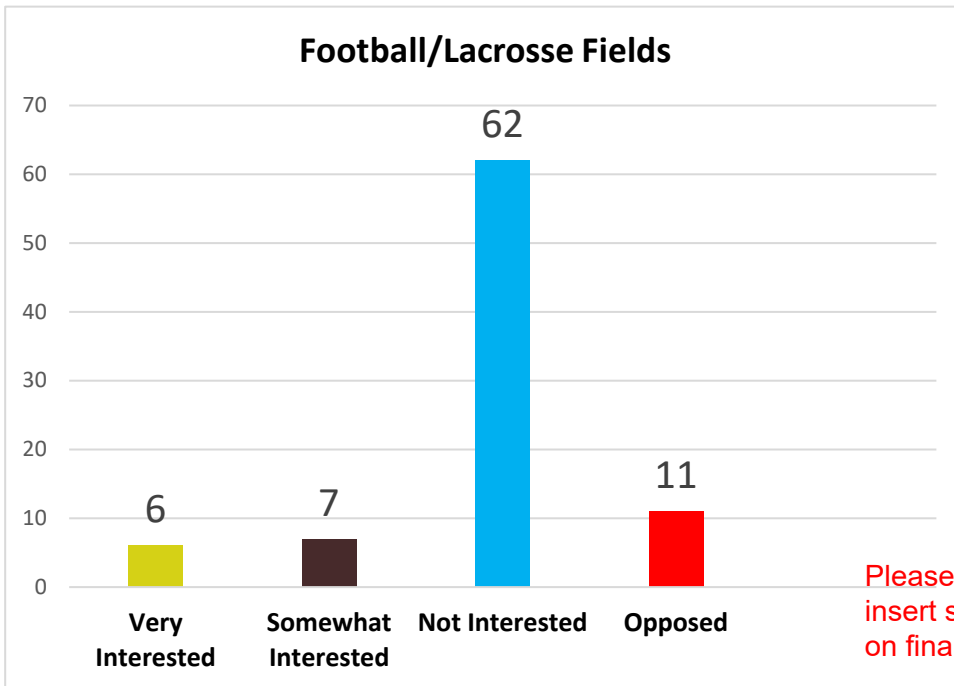
24. "Are efforts being made to ask residents to consider bequeathing land/preservation funds to Town in their wills?"
25. I am very aware of what the Village offers for outdoor recreation facilities and amenities. I am not sure of what the Township is currently offering or where they are even located. I struggle with the fact that the Township wants to pursue outdoor recreation facilities and amenities when we are so close to those offerings in the Village along with the proximity of the State Park and the bike trail in our own backyard. My taxes already support the State Park and bike trail. We have these wonderful facilities yet people still choose to run or bike on the very dangerous Hwy 39.
26. I feel like some are kept up well and others not. For example, there are broken swings at the village park playground that haven't been replaced or fixed for a while now. New playground equipment would also be nice.
27. CURRENT FACILITIES ARE SUFFICIENT
28. We need new tennis/pickle ball courts!
29. Might there ever be an outdoor ice rink in winter?
30. pickle ball
31. Any plans for pickleball courts?
32. It would be really nice to have a trail that connects the south side of the NG township into town and out to the north side of the township. Basically, a trail on valley view road that connects to the state park trail (currently dangerous for short stint on highway 69), then also runs a loop to the north side township as well. Clearly tied into going through the town of New Glarus in between.

Please note we still need to insert soccer slide - will do this on final draft.

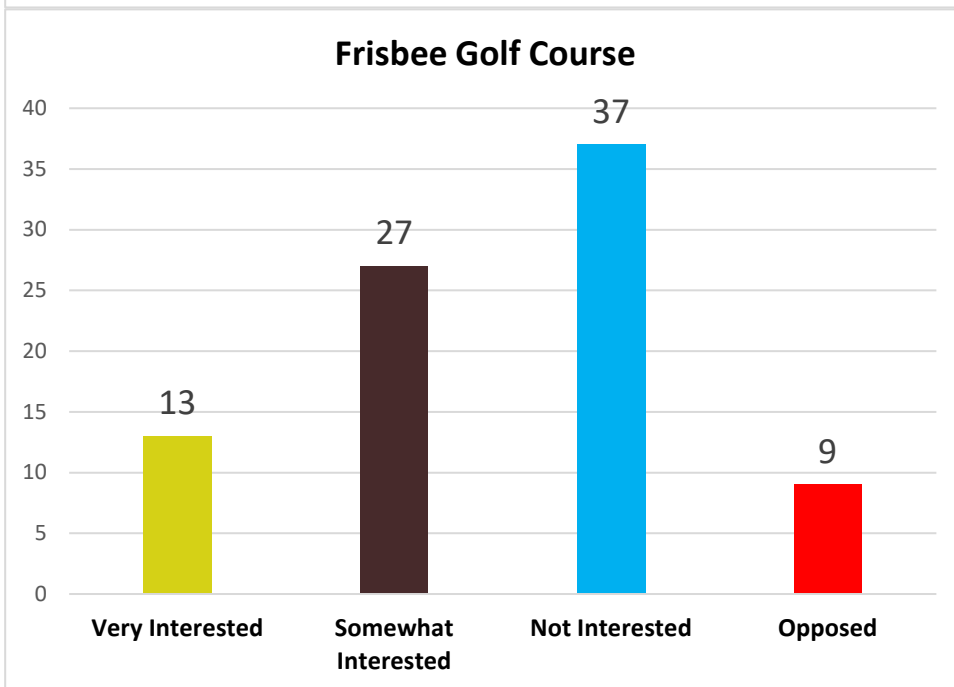
4. The following recreational facilities/services are not available in the Town of New Glarus. Please rate each of the following items regarding your household's interest in the Town exploring these services.



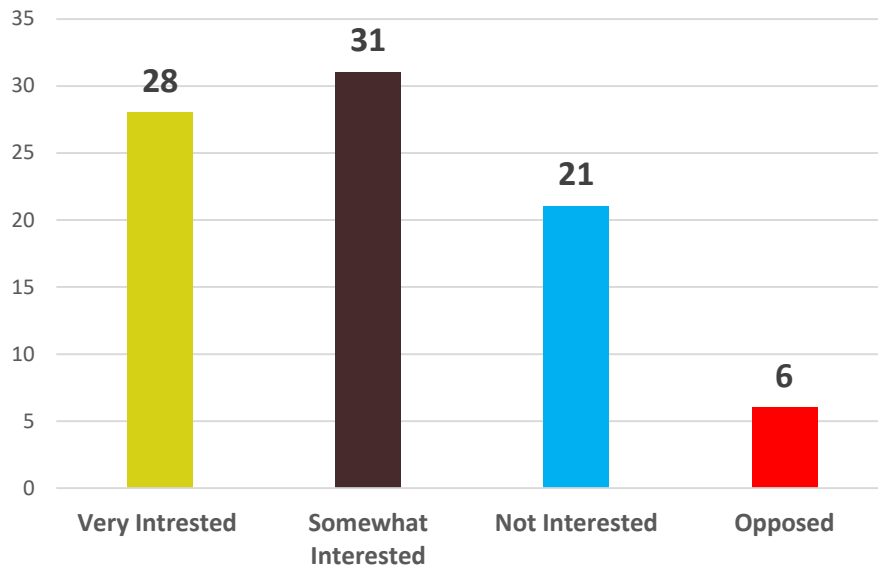
4. The following recreational facilities/services are not available in the Town of New Glarus. Please rate each of the following items regarding your household's interest in the Town exploring these services.



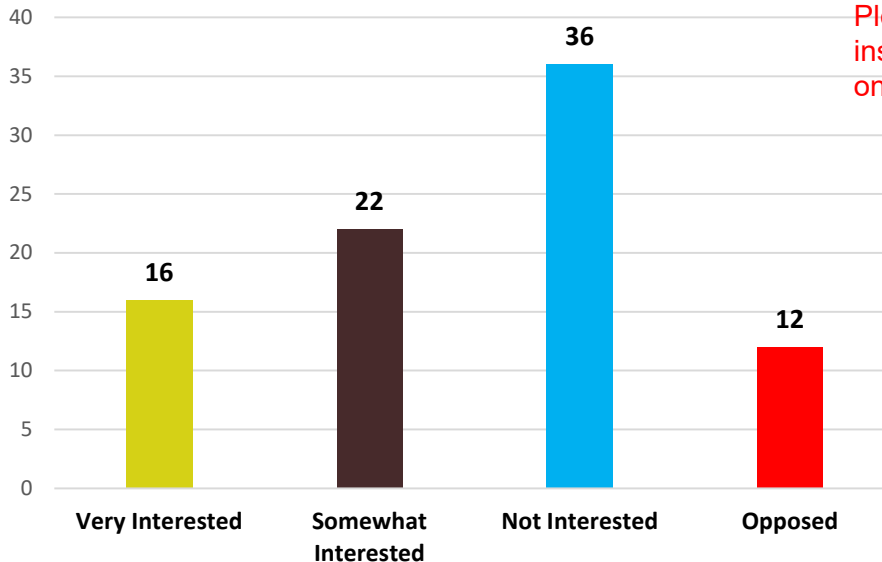
Please note we still need to insert soccer slide - will do this on final draft.



Indoor Community Recreation Center

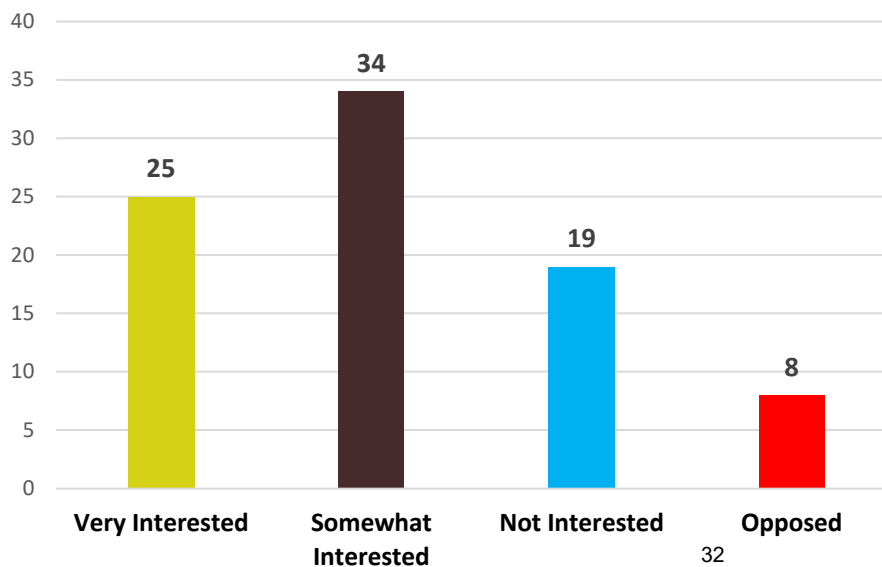


Designated Mountain Bike Trails

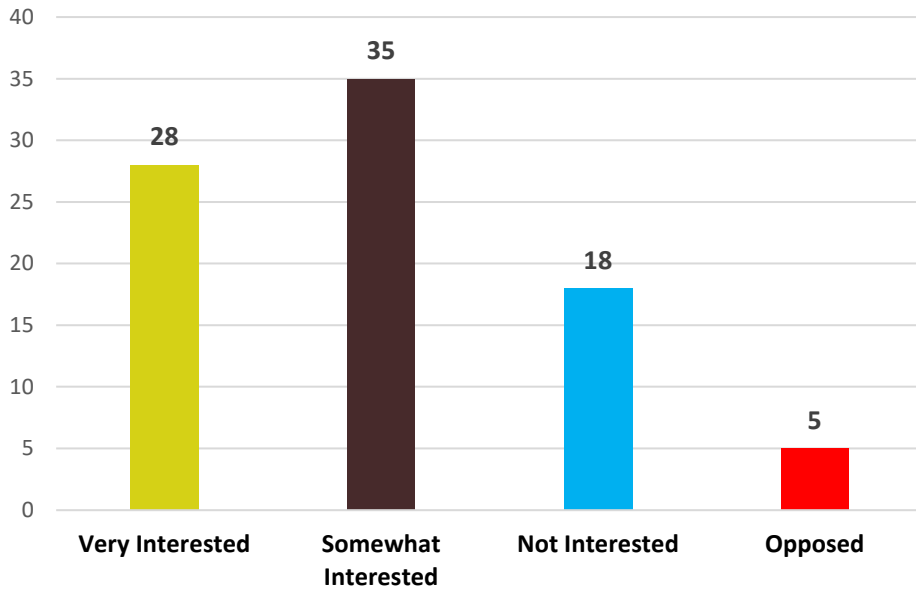


Please note we still need to insert soccer slide - will do this on final draft.

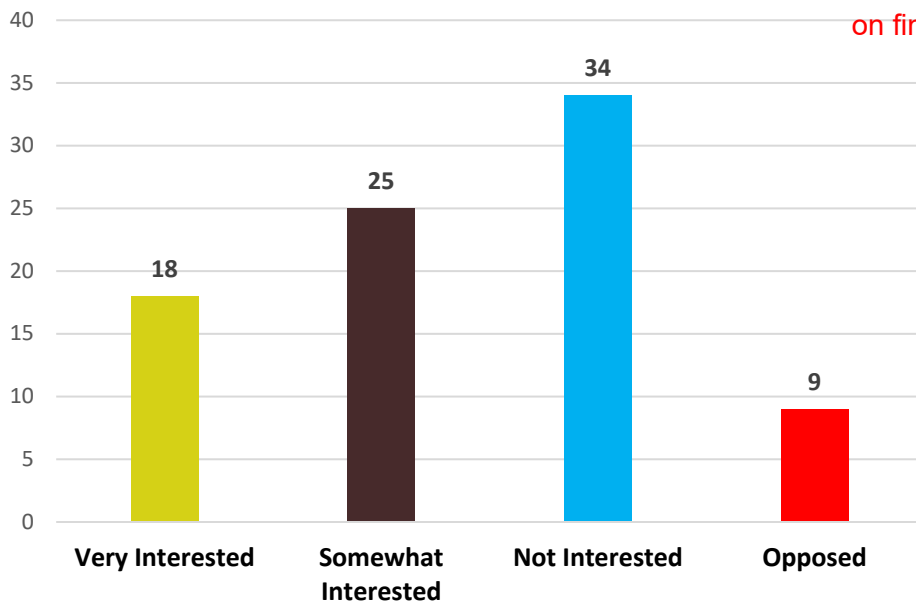
Outdoor Ice-Skating Rink



Adult Recreational Programs

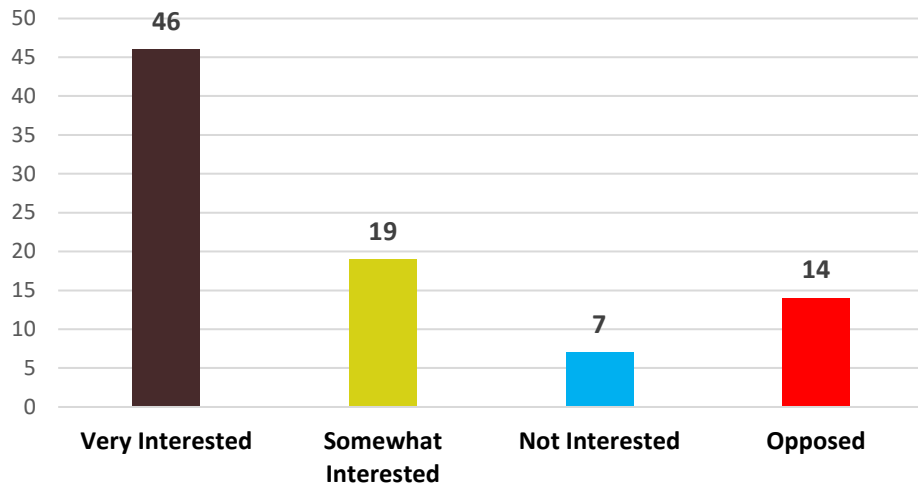


School-Year Recreational Programming

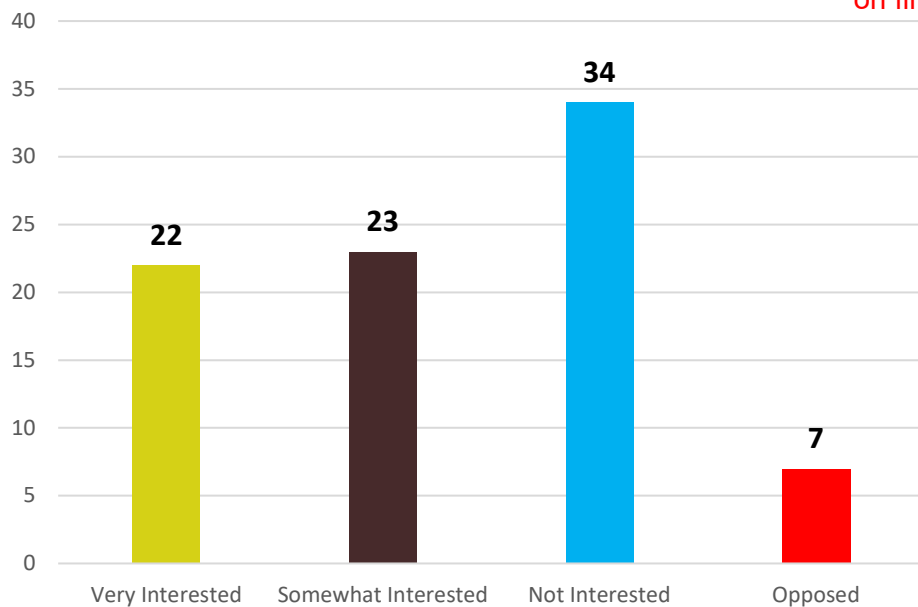


Please note we still need to insert soccer slide - will do this on final draft.

Trails that connect the Town to the Village



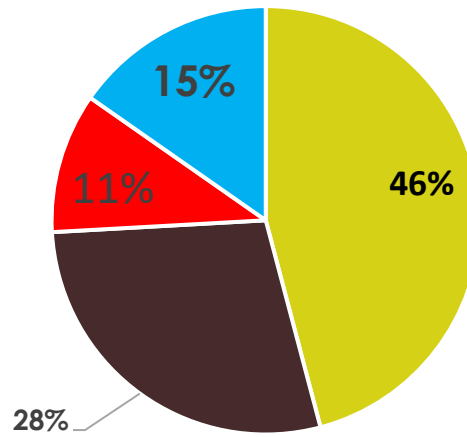
Pickleball Courts



Please note we still need to insert soccer slide - will do this on final draft.

Q5. The Town works to obtain property easements to link existing and proposed trails. How important is it to you that the Town continue to obtain these easements, extending existing trails?

- Very Important
- Somewhat Important
- Not Important
- Opposed



Please note we still need to insert soccer slide - will do this on final draft.

Q6. Are there missing trail connections you would like to see? Where would you like connections added?

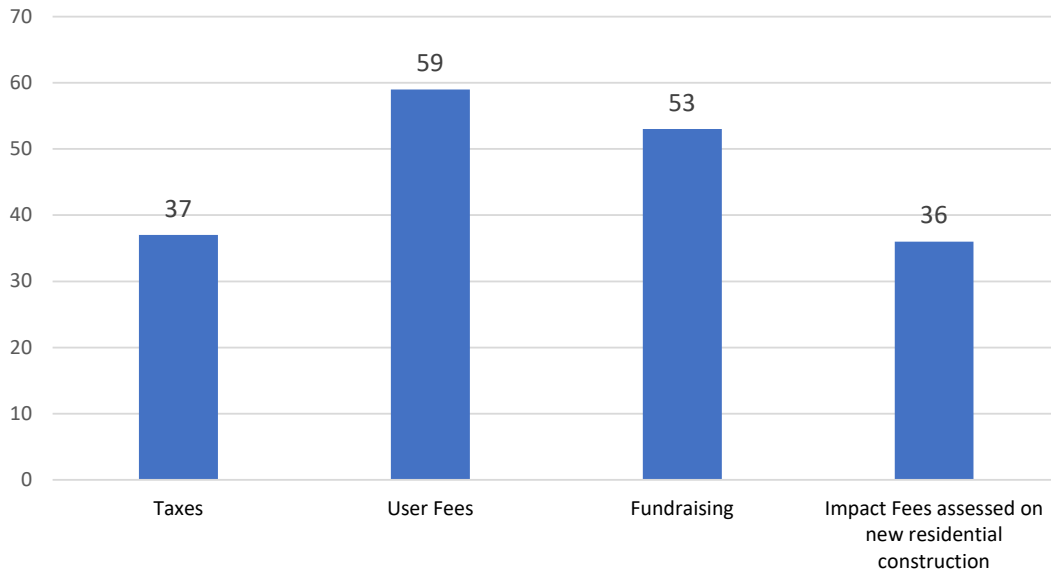
1. Old Madison/69 to the Village which would connect the Windmill Ridge Sub and possibly Highlands too
2. Perhaps a safe walking trail from the Village to Baileys Run Winery
3. A trail along Hwy O and Pioneer to connect into town. Expansion of bike trail along they 69N to connect to Bellevilles trail system.
4. Yes, connect the State Park Woods to the trail into the Village.
5. A trail along CTH NN, N and H; a trail along the west side of Hwy 69 where the snowmobile trail is located to provide safe access to the Village for the residents of the Highlands and Windmill Ridge; a trail along Hwy. 39 west of the Village to Bailey's Run; a trail connecting Valley View Road to the Sugar River Trail and also to the New Glarus Brewery.
6. Old Madison Road to the Village.
7. Wind mill ridge, blue vista
8. "North along the river."
9. North of village limits along Hwy O
10. Along the hwy 69 corridor north of the village
11. County N
12. Old Madison Road area to town.
13. South end- the trail that ends at the clinic entrance should go up around the high school and follow the village edge on the west heading north all the way around tower circle and cross 39 to go all the way around to nursing home
14. Hwy 69 From Spring Valley to Village.
15. Trails should lead DIRECTLY from township areas into village, not making big loops. Trail heads should have designated parking areas NOT on roadsides abutting personal property. Would prefer ATVs and UTVs not be allowed on trails.
16. Township to village
17. Continuation of the bike lane on Valley View Road. From Edelweiss Rd to the sugar river trail (at a minimum) or all the way to town.
18. Trail connections North of the village
19. As mentioned above. Link the state park trail with an easier direct crossing of highway 69 to valley view, which then already connects to the main trail into town/by golf course

Please note we still need to insert soccer slide - will do this on final draft.

7. Please list any recreational amenities that the Town lacks or are not listed above that you wish were available.

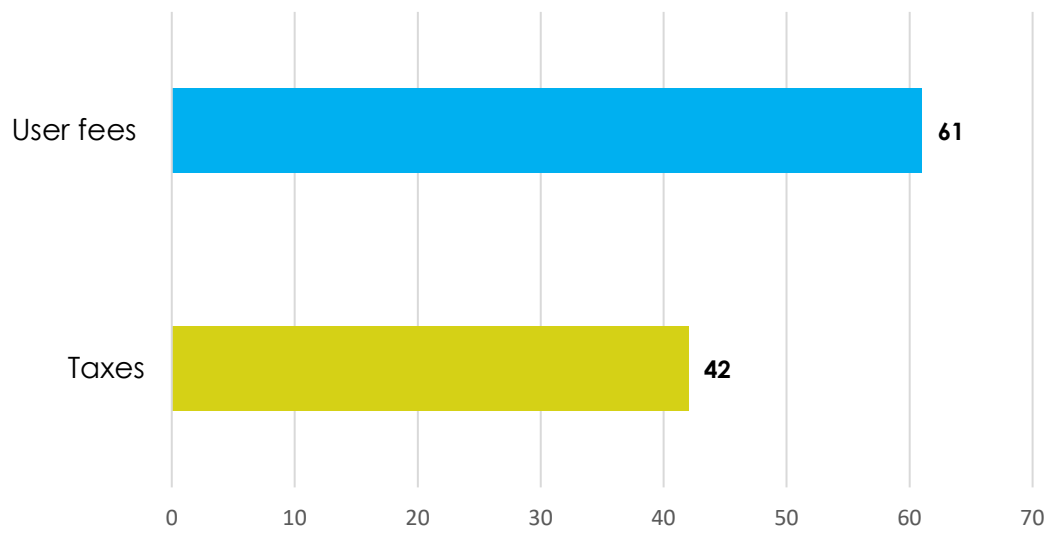
1. Indoor pool
2. Off leash dog park
3. Winter sledding hill!!! Additional softball/baseball field. Soccer fields.
4. Dog recreation area with agility equipment similar to the one in Monroe
5. A community center to use for both children and adults.
6. "Horseback riding trails"
7. Cross country ski/snowshoe trails if we ever get snow in the appropriate months. Fat tire bike trails.
8. Atv trails
9. Soccer fields that could be used for tournaments. This would be good for bringing families into the community for food/shopping/lodging/etc.
10. Parks
11. Designated cross country ski trails.
12. Mt bike trails, dog park,
13. baseball/softball field access is extremely limited.
14. Paddling access along the river!
15. Parking along Windmill Ridge Road, adjacent to the Bluebird Ridge Conservancy
16. UTV and Neighborhood electric vehicle (NEV) street and trail access. Please note we still need to insert soccer field - will do this on final draft.
17. Recreational programs for all would be a wonderful addition.
18. More gym space, recreational space/facilities for youth
19. UTV and ATV allowed. Almost all other towns interested in tourism allow these without issues
20. Wish there was more young family recreation, like a splash pad area
21. Senior Center, community meeting rooms that aren't linked to the library/Village Hall
22. Splash pad
23. Adult kickball
24. Outdoor ice skating would be very cool. But overall you all do an amazing job!
25. pickle ball courts
26. Splash pad
27. Improve the baseball/softball facilities, add a track

Q8. Please indicate how you think development of recreational facilities should be primarily funded.

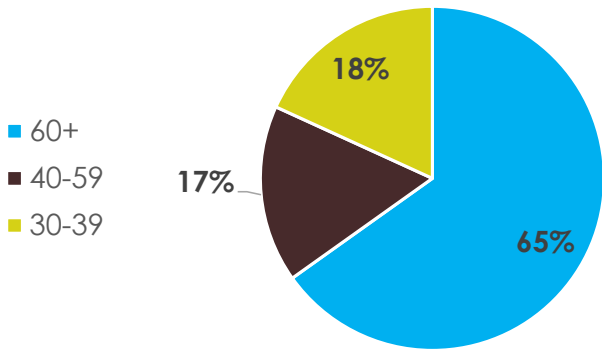


Q9. Maintenance of recreational facilities should be primarily funded by

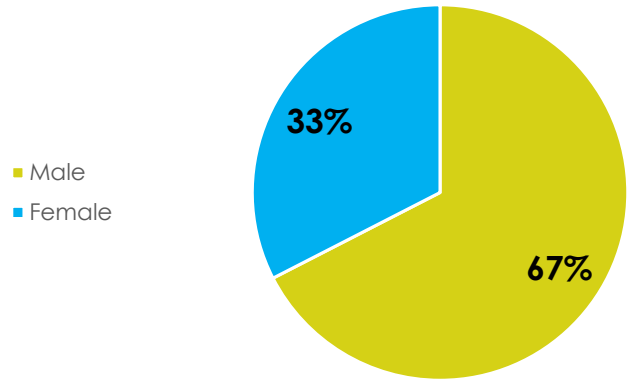
Please note we still need to lose soccer slide - will do this on final draft.



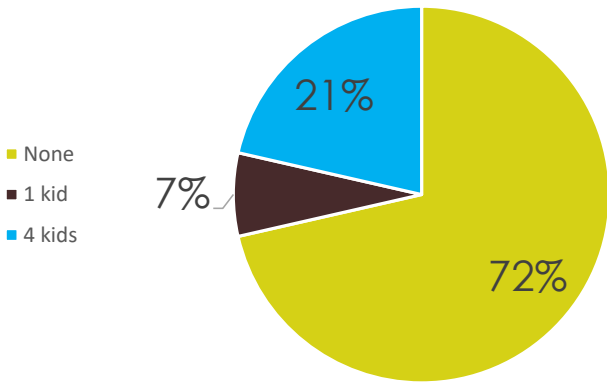
12. Which category below includes your age?



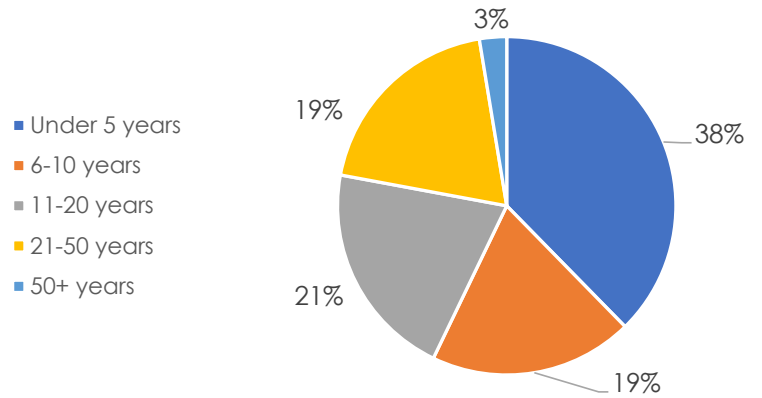
What is your Gender?



How many kids do you have under 18?



How many years have you lived in the Town?



**VILLAGE OF NEW GLARUS
RESOLUTION 16-05**

**RESOLUTION TO ESTABLISH 2016 SCHEDULE OF FEES FOR USE OF NEW GLARUS
VILLAGE PARKS AND SWIMMING POOL**

THE VILLAGE BOARD of the VILLAGE OF NEW GLARUS, GREEN COUNTY, WISCONSIN does hereby establish the following fee schedule:

[All pool / recreation programs purchased by April 30, 2016 will receive a 5% discount]
[1/2 price passes will be available starting August 1st]

POOL PROGRAMS

| SEASON PASS | RESIDENT | NON-RESIDENT |
|--------------------------|-----------------|---------------------|
| Family (2-4) | \$95.00 | \$165.00 |
| Each Add'l Family Member | \$11.00 | \$15.00 |
| Single | \$50.00 | \$85.00 |
| Child – 4 and under | \$20.00 | \$25.00 |
| Daycare Provider | \$15.00 | \$15.00 |

| DAILY PASS | RESIDENT | NON-RESIDENT |
|-------------------|-----------------|---------------------|
| Adult | \$3.00 | \$5.00 |
| Child | \$2.00 | \$3.00 |
| Shower Only | \$2.00 | \$3.00 |

| SWIMMING LESSONS | WITH PASS | WITHOUT PASS |
|-------------------------|------------------|---------------------|
| Preschool – Level 6 | \$20.00 | \$45.00 |

| SWIM RECREATION PROGRAMS | RESIDENT | NON-RESIDENT |
|---------------------------------|---------------------------|--------------------------|
| Splash-Splash | \$25.00 | \$30.00 |
| Adult Water Aerobics | \$45.00 / \$3.00 Session | \$50.00 / \$4.00 Session |
| Early Bird Lap Swim | \$45.00 / \$3.00 Session | \$50.00 / \$4.00 Session |
| Swim Team | \$60.00 / Village Portion | |

2 Hours / \$100.00*

Birthday Bubbles *Staff is authorized to increase fee should additional guards be required due to number of attendees.

PARK / RECREATION PROGRAMS

| | RESIDENT | NON-RESIDENT |
|---|---|--------------------------------------|
| Baseball (3-8 Grade) | \$55.00 | \$65.00 |
| Softball (2-8 Grade) | \$55.00 | \$65.00 |
| Minor League Baseball/Softball | \$25.00 | \$30.00 |
| Major League Baseball/Softball | \$25.00 | \$30.00 |
| Touchdown Club | \$25.00 | \$30.00 |
| Ride and Slide | \$25.00 | \$30.00 |
| Park Reservation Fee | \$25.00 | \$35.00 |
| Men's Softball | \$150.00 per team | |
| Coed Kickball | \$150.00 per team | |
| Coed Sand Volleyball | \$100.00 per team | |
| Triathlon | Prior to Event | Individual-\$55.00 Team-\$75.00 |
| | Day of Event | Individual-\$65.00 Team-\$90.00 |
| Sport Camps | Daily Park Usage Fee plus Additional Costs | |
| Sport Leagues (not operated by Village) | \$230.00 per league | |
| Tournaments (Hosting) | \$75.00 includes concession stand. Plus all other necessary license fees. | |

AND DOES FURTHER RESOLVE that all fees shall be paid to the New Glarus Village Treasurer prior to the start of the program.

AND DOES FURTHER RESOLVE that adult shall be defined as an individual having graduated from High School, having completed the equivalent of K-12 education, or 18 years of age;

That family shall be defined as no more than two adults living together and their natural, adopted or foster children whether living with parent or not. If families have a summer daycare provider, they may add that person to their family pass for an additional \$15;

That all season pass fees shall be paid to the New Glarus Village Treasurer before beginning swimming lessons and/or prior to the use of the pool;

Any cancellation made after the registration deadline is subject to a \$5.00 surcharge. No refunds will be given after the first session or practice has taken place, other than in the case of a severe illness or injury that prevents participation. Full refunds will be given for all programs cancelled by the Village. Refunds will be made by check and mailed to the address provided on the registration. Group discounts information can be obtained at the Village Offices.

DATE PRESENTED: 2/16/16
ADOPTED: 2/16/16

Roger Truttman, President

Lynne R. Erb, Clerk

**VILLAGE OF NEW GLARUS
RESOLUTION 21-26
RESOLUTION TO ESTABLISH 2022 SCHEDULE OF FEES FOR USE OF NEW GLARUS
VILLAGE PARKS AND SWIMMING POOL**

THE VILLAGE BOARD of the VILLAGE OF NEW GLARUS, GREEN COUNTY, WISCONSIN does hereby establish the following fee schedule:

[All pool/recreation programs purchased by April 30, 2022 will receive a 5% discount/ **EXCEPT for 3rd to 8th Grade Baseball and Softball the deadline for the discount is March 1, 2022**]

[1/2 price pool passes will be available starting August 1, 2022]

POOL PROGRAMS

| SEASON PASS | RESIDENT | NON-RESIDENT |
|--------------------------|-----------------|---------------------|
| Family (2-4) | \$115.00 | \$185.00 |
| Each Add'l Family Member | \$31.00 | \$35.00 |
| Single | \$70.00 | \$105.00 |
| Child – 4 and under | \$40.00 | \$45.00 |
| Daycare Provider | \$35.00 | \$35.00 |

½ price passes to begin 8/1/22

| DAILY PASS | RESIDENT | NON-RESIDENT |
|-----------------------------|-----------------|---------------------|
| Adult | \$5.00 | \$7.00 |
| Child | \$4.00 | \$5.00 |
| Shower Only | \$2.00 | \$3.00 |
| Special Group Rate* | | |
| Adult | \$5.00 | \$6.50 |
| Child | \$4.00 | \$4.50 |
| Lessons (Child- per lesson) | | \$3.00 |

*As determined by Village Staff

| SWIMMING LESSONS | WITH PASS | WITHOUT PASS |
|-------------------------|------------------|---------------------|
| Preschool – Level 6 | \$20.00 | \$45.00 |

| SWIM RECREATION PROGRAMS | RESIDENT | NON-RESIDENT |
|---------------------------------|---------------------------|--------------------------|
| Splash-Splash | \$25.00 | \$30.00 |
| Adult Water Aerobics | \$45.00 / \$3.00 Session | \$50.00 / \$4.00 Session |
| Early Bird Lap Swim | \$45.00 / \$3.00 Session | \$50.00 / \$4.00 Session |
| Swim Team | \$60.00 (Village Portion) | |

Birthday Bubbles

2 Hours / \$100.00*

*Staff is authorized to increase fee should additional guards be required due to number of attendees.

PARK / RECREATION PROGRAMS

| | RESIDENT | NON-RESIDENT | | |
|---|---|---------------------|--------------------|--------------|
| 3 rd – 8 th Grade Baseball and Softball | \$65.00 | \$75.00 | | |
| 2 nd Grade Baseball and Softball | \$35.00 | \$40.00 | | |
| Minor League Baseball/Softball (K-1 Grade) | \$30.00 | \$35.00 | | |
| Blast Ball (3-4 Year Old's) | \$30.00 | \$35.00 | | |
| Ride and Slide | \$25.00 | \$30.00 | | |
| Park Reservation Fee | \$35.00 | \$50.00 | | |
| Men's Softball | \$150.00 per team | | | |
| Coed Kickball | \$150.00 per team | | | |
| Coed Sand Volleyball | \$100.00 per team | | | |
| Triathlon | Prior to Event | Splash/Dash-\$25.00 | Individual-\$60.00 | Team-\$80.00 |
| | Day of Event | Splash/Dash-\$30.00 | Individual-\$75.00 | Team-\$85.00 |
| Sport Camps | Daily Park Usage Fee plus Additional Costs | | | |
| Sport Leagues (not operated by Village) | \$230.00 per league | | | |
| Tournaments (Hosting) | \$75.00 includes concession stand. Plus all other necessary license fees. | | | |
| Late Fee: | a late fee of \$20.00 will be added to 3-8 th Grade Softball and Baseball after deadline listed in the brochure. | | | |

AND DOES FURTHER RESOLVE that all fees shall be paid to the New Glarus Village Treasurer prior to the start of the program.

AND DOES FURTHER RESOLVE that adult shall be defined as an individual having graduated from High School, having completed the equivalent of K-12 education, or 18 years of age;

That family shall be defined as no more than two adults living together and their natural, adopted or foster children whether living with parent or not. If families have a summer daycare provider, they may add that person to their family pass for an additional \$15;

That all season pass fees shall be paid to the New Glarus Village Treasurer before beginning swimming lessons and/or prior to the use of the pool;

Any cancellation made after the registration deadline is subject to a \$5.00 surcharge. No refunds will be given after the first session or practice has taken place, other than in the case of a severe illness or injury that prevents participation. Full refunds will be given for all programs cancelled by the Village. Refunds will be made by check and mailed to the address provided on the registration.

Group discounts information can be obtained at the Village Offices.

DATE PRESENTED: _____

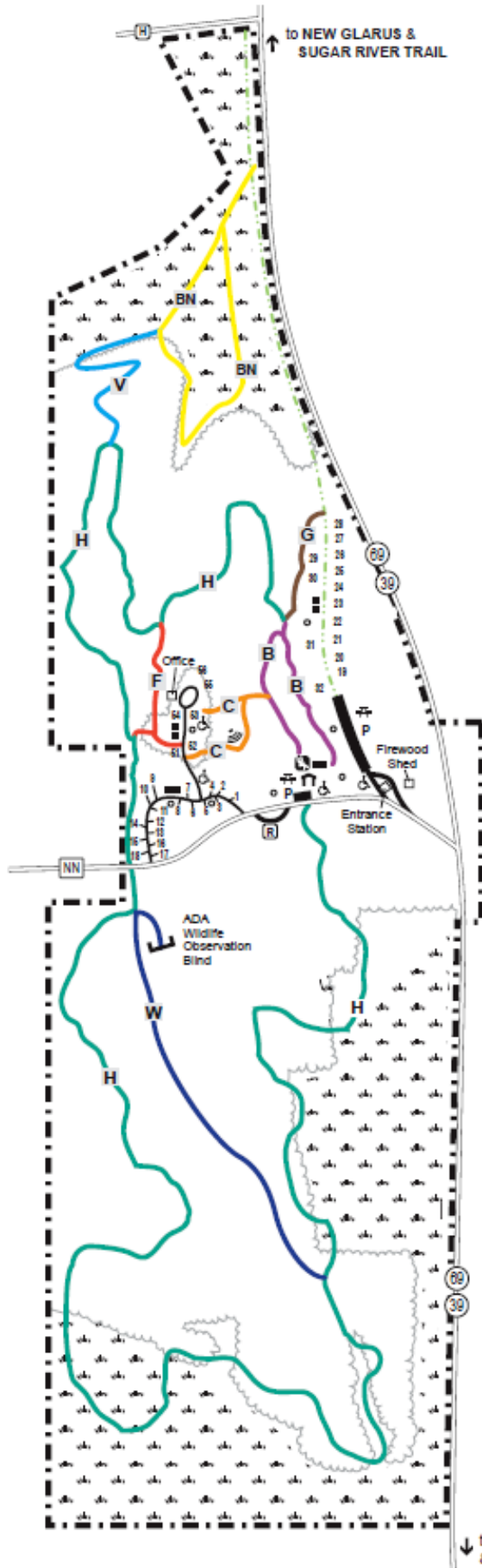
ADOPTED: _____

Roger Truttmann, President

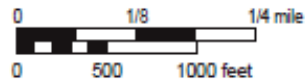
Lynne R. Erb, Clerk

New Glarus Woods State Park

W5508 Cty Hwy NN
 New Glarus, Wisconsin 53574
 (608) 527-2335
 LAT: N42.7870, LONG: W089.6295



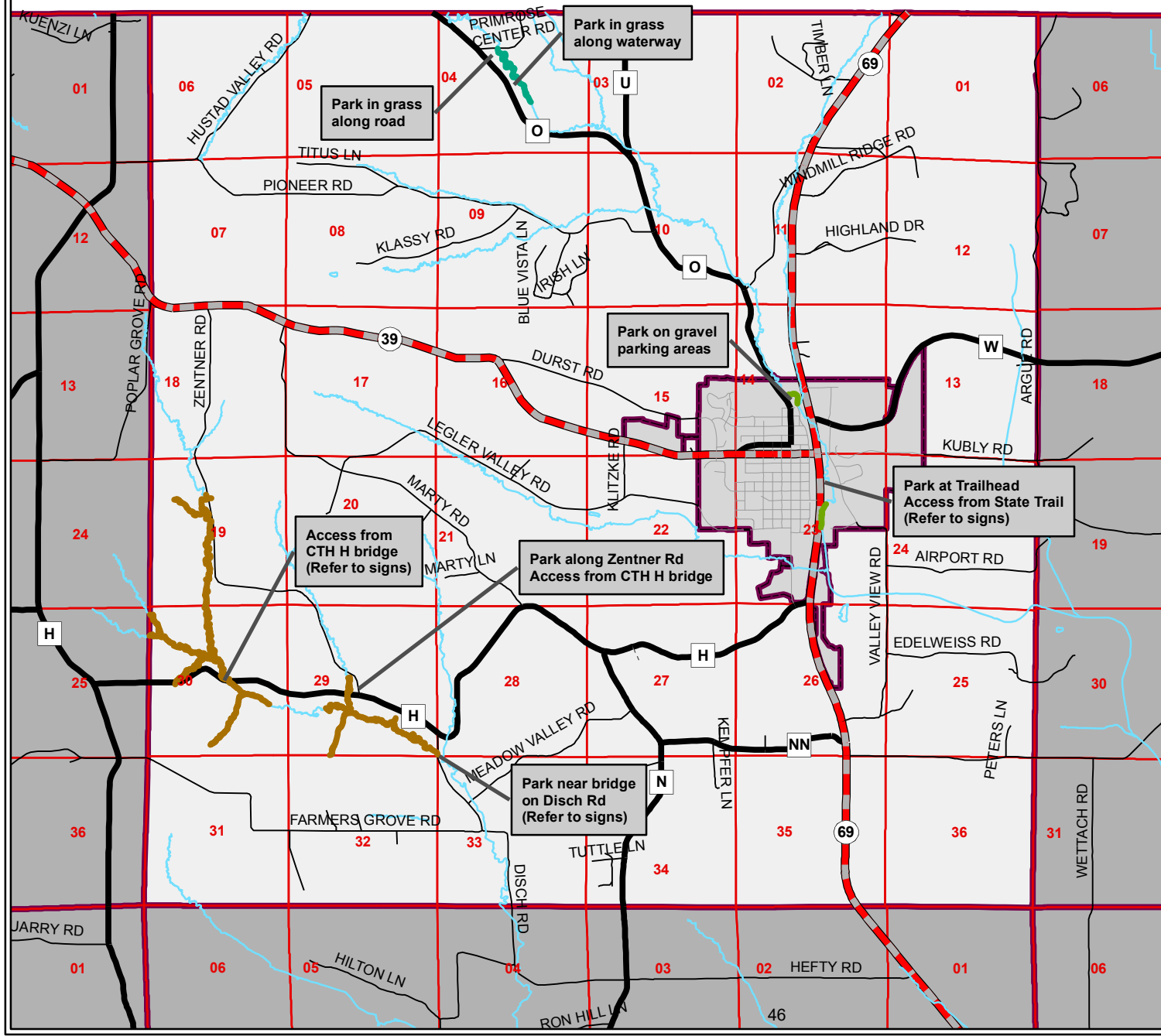
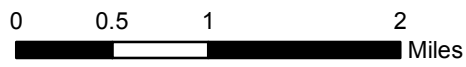
- ▬▬▬▬ Park Boundary
 - P Parking
 - 🏠 Shelter
 - 🍴 Picnic Area
 - 🚻 Toilet Buildings
 - ⦿ Water Fountain
 - ♻️ Recycling Station
 - 🎪 Chattermark Amphitheater
 - ♿ Accessible
 - 🎡 Playground
-
- Campgrounds
 - Accessible Campsites: 4, 53
 - Drive-in Campsites: 1-18
 - Walk-to Campsites: 19-32
 - Group Campsites: 51-56
-
- You Are Here
- Trails
 - B Basswood Nature Trail - 0.4 miles
 - BN Bison Nature Trail - 0.8 miles
 - C Chattermark Trail - 0.1 miles
 - F Fox Trail - 0.2 miles
 - G Great Oak Trail - 0.2 miles
 - H Havenridge Nature Trail - 4.2 miles (Guidebook Available)
 - V Vista Trail - 0.4 miles
 - W Walnut Trail - 0.5 miles
 - Sugar River Trail Spur - 1.6 miles
-
- 🌳 Prairie Habitat
 - 🌲 Woods



| Date | Topic | Presenters |
|-------------|---|--|
| 10/4/2007 | Natural History of New Glarus | Mike Anderson, BioLogic Environmental Consulting, LLC, Duane Freitag, New Glarus Historical Society, and Carroll Schaal, Blue Mounds Area Project |
| 11/8/2007 | Preserving and Restoring Your Property | Darcy Kind, Wisconsin Department of Natural Resources, Mike Anderson, BioLogic Environmental Consulting, LLC, and Chuck Bauer, local prairie owner |
| 2/7/2008 | Creating Wildlife Habitat with Native Landscaping | Susan Carpenter, UW Madison Arboretum and Chris Kaplan, Tallgrass Restoration, LLC |
| 3/6/2008 | Suburban Gardening/Rain Gardens and Rain Barrels | John Gishnock III, owner of Formecology, Steve Arnold, Sustain Dane |
| 10/9/2008 | Preserving Your Family Lands, Part 1 | Pam Foster Felt, Gathering Waters Conservancy and Doug Cieslak, Driftless Area Land Conservancy |
| 10/16/2008 | Preserving Your Family Lands, Part 2 | Attorney Johanna Alex, Christenson and Alex Law Office, Tenny Albert, independent appraiser, and Ken Powell Jr., owner of Powell Farm and Prairie |
| 12/7/2009 | Conservation Planning Workshop | Mark O'Leary, Applied Ecological |
| 2/26/2010 | Bluebirding in Wisconsin | Dr. Kent Hall, Bluebird Restoration Association of Wisconsin |
| 10/20/2011 | Raptor Workshop | Dianne Moller, Hoo's Woods Raptor Center |
| 5/3/2012 | Barn Preservation Workshop | Jerry Apps, author and Professor Emeritus |
| 4/8/2013 | Tree Workshop | Cory Secher, Forester, Department of Natural Resources |
| 9/15/2013 | Barn Renovation Workshop | Lauren Meinert, Zweifel Construction and Kim Tschudy, historian |
| 4/22/2015 | Bees and Trees Workshop | Cory Secher, Forester, Department of Natural Resources and Dr. Bob Beck and Pat Holstrom |
| 5/14/2016 | Prairie Restoration Workshop | Tom Mitchell, Prairie Enthusiasts, Steve Fabos, Indigenous Restorations |
| 11/11/2017 | Bluebird House Construction Workshop | Kim Tschudy, historian |
| 2/3/2018 | Beekeeping Basics Workshop | Dan Ziehlie, Wisconsin State Bee Inspector and Sugar River Beekeepers |
| 3/17/2018 | From Farm to My Table | Katy Dickson, Christensen Farm |
| 1/12/2019 | Sesquicentennial Barns of Green County | Kim Tschudy, historian |
| 4/7/2019 | Invasive Species Workshop | Kelly Kearns, Department of Natural Resources and Mike Davis, Prairie Enthusiasts |
| 12/1/2019 | Bluebird House Construction Workshop | Kim Tschudy, historian |
| 1/11/2020 | River Tripping Workshop | Andrew and Ethan Elkins |
| 3/21/2020 | Beekeeping Basics Workshop | Dan Ziehlie, Wisconsin State Bee Inspector and Sugar River Beekeepers |
| 4/18/2020 | River Tripping Workshop | Andrew and Ethan Elkins |

While fishing/streams is not directly related to the CORP as it is not an amenity the Town has control of or manages this map is included as additional data.

Town of New Glarus Stream Improvements Open to the Public



Legend

- DNR Improvement Class II Trout Stream (Green line)
- DNR Improvement Class III Trout Stream (Brown line)
- Trout Unlimited Improvement Class II Trout Stream (Light Green line)
- Streams (Blue line)
- Section lines (Red outline)



Source: Information for this map was obtained from the Wisconsin Dept. of Natural Resources Surface Water Viewer, Green County Land Information Dept., and the Town of New Glarus.

From: [Arianna Voegeli](#)
To: [Clerk Treasurer](#)
Cc: [Harry Pulliam](#)
Subject: RE: County park concept
Date: Monday, August 29, 2022 1:32:05 PM

Hi John,

The property committee discussed the idea of a new County park. At this time, they are not interested in pursuing anything. Our parks and property budget is really tight right now and we have several big projects in the works and upcoming in the next few years. We might be interested in renewing this discussion in a few years.

Thank you,



Arianna L. Voegeli
Green County Clerk
Administrative Coordinator
Green County Clerk's Office
1016 16th Ave
Monroe, WI 53566
P: (608) 328-9430 | **F:** (608) 328-2835
www.greencountywi.org
www.elections.wi.gov

Upcoming Elections:
November 8, 2022 – General Election
February 21, 2023 – Spring Primary (if required)
April 4, 2023 – Spring Election

From: Clerk Treasurer <clerk@townofnewglaruswi.gov>
Sent: Monday, August 22, 2022 7:58 AM
To: Arianna Voegeli <avoegeli@greencountywi.org>
Cc: Harry Pulliam <hfpulliam@gmail.com>
Subject: County park concept

CAUTION: This email originated from outside of the organization. Do not click links or open attachments unless you recognize the sender and know the content is safe.

Arianna,

I thought the attached report would help illustrate the original basis of the 2009 request to then Green County Clerk Mike Doyle. The following Towns have the greatest rate of growth as expressed by the increase to the proportionate share of Green County's equalized value:

| | |
|------------|--------|
| New Glarus | +3.07% |
| York | +3.84% |
| Monroe | +3.13% |

I think at the time of the original proposal, the Town of New Glarus and Town of Exeter had the greatest percentage increase in equalized value. The Village of Monticello is seeing the largest increase at 8.02% per the same attached report.

Many thanks,
John

John Wright
Town of New Glarus Clerk-Treasurer
(608) 527-2390